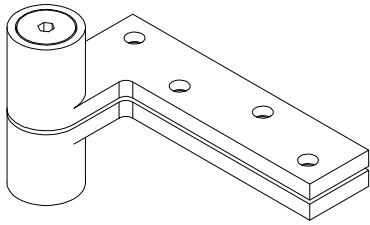
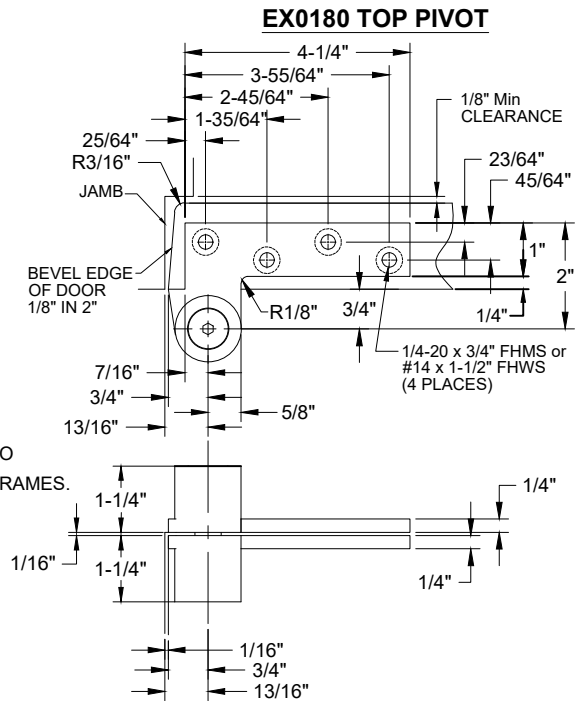


EX0180 TOP PIVOT, 3/4" OFFSET, NON-HANDED WITH EXTENDED PIVOT PIN



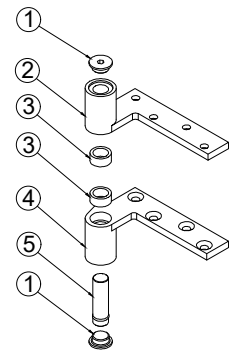
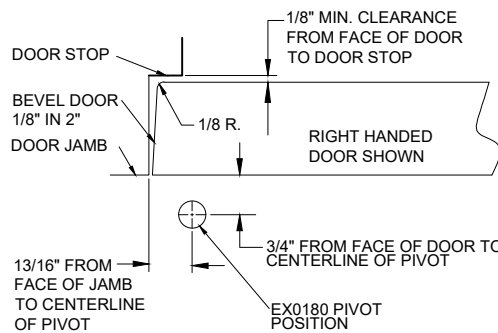
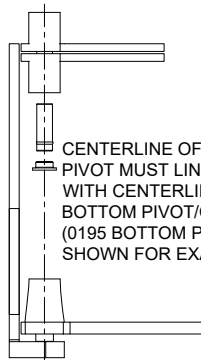
NOTES:

1. PIVOTS DRILLED FOR 1/4-20 x 3/4 FHMS OR #14 x 1-1/2" FHWS.
2. REINFORCING BY OTHERS.
3. IT IS THE DOOR AND FRAME MANUFACTURERS RESPONSIBILITY TO CHECK THE HARDWARE SCHEDULE AND PREP THE DOORS AND FRAMES.
4. MAXIMUM DEGREE OF OPENING, 180°, TRIM PERMITTING.



INSTALLATION INSTRUCTIONS

1. MEASURE $1\frac{3}{16}$ " OUT FROM DOOR JAMB.
2. ALLOW $\frac{1}{8}$ " MIN CLEARANCE FROM DOOR STOP TO DOOR FACE. MEASURE DOOR THICKNESS AND ADD $\frac{3}{4}$ ".
3. WHERE THESE LINES INTERSECT DETERMINES THE CENTERLINE OF THE PIVOT POINT.
4. INSTALL EX0180 DOOR PORTION PER TEMPLATE
5. INSTALL EX0180 JAMB PORTION PER TEMPLATE.
8. PUSH EX0180 EXTENDED PIVOT PIN IN PLACE AND SECURELY TIGHTEN E0180 END CAP.



ITEM NO.	QTY.	PART NO.
1	2	EX0180 END CAP
2	1	EX0180 JAMB PORTION
3	2	EX0180 NEEDLE BEARING
4	1	EX0180 DOOR PORTION
5	1	EX0180 EXTENDED PIVOT PIN

Disclaimer: This template is to be used for installation, as shown, of said product and is not suitable for every application method. Custom applications, where door sizes, weights and conflicting hardware are a factor, need to be addressed with ABH and proper instructions provided. ABH is not liable for failure or performance of the product due to improper installation methods and/or use. Improper use and/or installation of this product will void the standard warranty.



www.abhmfg.com
 E-mail: abhinfo@abhmfg.com
 Architectural Builders Hardware Mfg., Inc.
 1222 Ardmore Ave., Itasca, IL 60143
 630.875.9900; FAX 800.9FAXABH (932.9224)

© 2021 ABH Mfg., Inc.
 printed in USA

EX0180-04.DWG

EX0180

PAGE 1 OF 1

REVISED 12-03-21