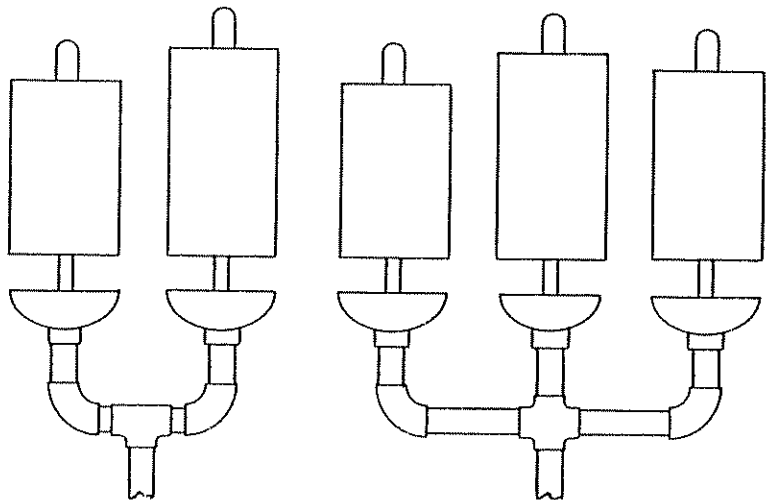
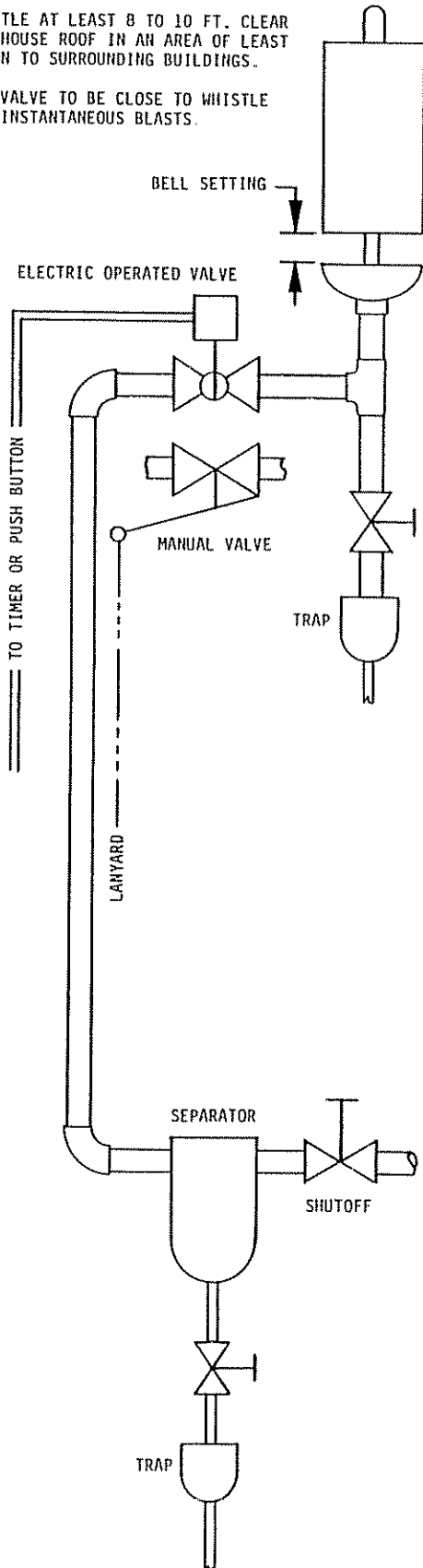


MOUNT WHISTLE AT LEAST 8 TO 10 FT. CLEAR OF BOILER HOUSE ROOF IN AN AREA OF LEAST OBSTRUCTION TO SURROUNDING BUILDINGS.

OPERATING VALVE TO BE CLOSE TO WHISTLE FOR SHARP INSTANTANEOUS BLASTS.




OPERATION

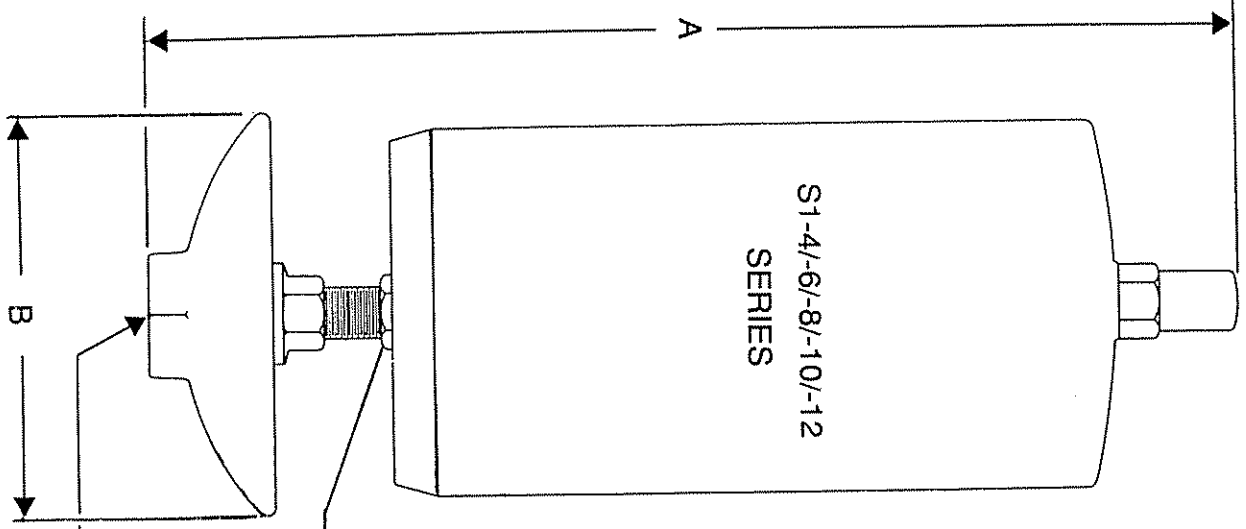
THE SIMPLEST METHOD OF OPERATING A STEAM WHISTLE IS TO USE A MANUAL QUICK-OPENING VALVE. THEY ARE GENERALLY AVAILABLE IN ALL SIZES UP TO AND INCLUDING 2" IPS. NORMALLY THEIR PRESSURE RATING IS 150 PSI BUT SOME ARE AVAILABLE FOR 200 PSI OPERATION. AT NO TIME SHOULD THE OPERATING PRESSURE EXCEED THE VALVE RATING.

FOR REMOTE OPERATION SUCH AS TIMER OR PUSH BUTTON ACTIVATED, STEAM SOLENOID VALVES CAN BE USED IN THE SMALLER SIZES OF 1/2" TO 1" IPS. HOWEVER THE LARGER SIZES UP TO 4" IPS ARE OFTEN TOO SLOW IN OPERATION TO GIVE QUICK SHARP CONCISE BLASTS. FOR THE LARGER SIZES, BUTTERFLY OR BALL VALVES WITH ELECTRIC OR PNEUMATIC ATUATORS ARE RECOMMENDED.

INSTALLATION

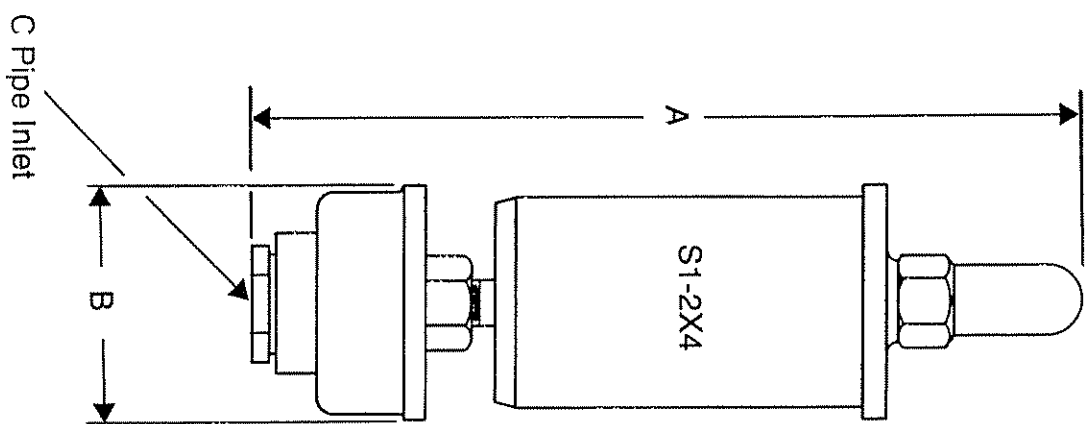
1. STEAM SUPPLY MUST BE TAKEN EITHER DIRECT FROM BOILER OR FROM A POINT ON STEAM LINE WHERE THERE IS A CONTINUOUS FLOW OF STEAM AT ALL TIMES.
2. THIS LINE SHOULD RISE CONTINUOUSLY THROUGH WELL GRADED PIPING FREE OF POCKETS, TO THE SEPERATOR AT THE BOTTOM OF THE VERTICAL RISER. THE RISE TO THE WHISTLE SHOULD BE AS NEARLY VERTICAL AS PRACTICABLE.
3. PIPING SHOULD BE WELL INSULATED AND WHEN EXPOSED TO THE OUTSIDE SHOULD BE DOUBLY INSULATED.
4. THE SEPERATOR AT THE BOTTOM OF THE VERTICAL SHOULD BE PROVIDED WITH STEAM TRAP OF AMPLE SIZE. DRAINS TO DISCHARGE TO A STEAM COLLECTING MAIN AT ATMOSPHERIC PRESSURE AND UNDER NO CIRCUMSTANCES TO HIGH PRESSURE DRAINS. TRAP SHOULD BE OF THE CONTINUOUS FLOW TYPE SUITABLE FOR THE PRESSURES INVOLVED.
5. THE DRAIN LINE FROM WHISTLE PROPER MUST BE CONNECTED TO A SUITABLE TRAP, PREFERABLY OF THE CONTINUOUS FLOW TYPE. THIS LINE SHOULD CONNECT TO THE LINE LEADING FROM SEPERATOR TRAP TO DRAIN COLLECTING MAIN.
6. ALL TRAPS MUST BE LOCATED HIGHER THAN DRAIN COLLECTING MAIN INTO WHICH THEY DISCHARGE.
7. ALL DRAIN LINES SHOULD BE WELL GRADED WITHOUT POCKETS AND SLOPING CONTINUOUSLY DOWNWARD TOWARD THE DRAIN COLLECTING MAIN

DRFG	JAR	 A UNIT OF GENERAL SIGNAL FARMINGTON CT 06032	
CHKD			
ENGR			
APPVD		TITLE: STEAM WHISTLE INSTALLATION	
FIRST USED ON		DWG NO	ISSUE
		A-SI-1X2	1
REF		SCALE	SHT 1 OF 2
FCG 58501.6P4			



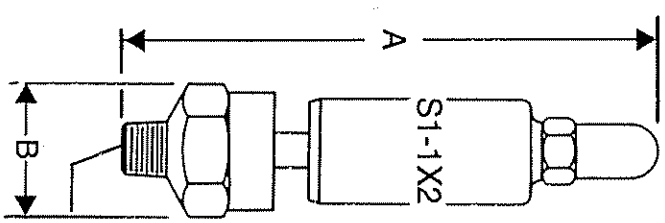
S1-4/-6/-8/-10/-12
SERIES

Only Used On:
S1-4X12
S1-6X8
S1-8X24
S1-10X30
S1-12X36
C Pipe Inlet



S1-2X4

C Pipe Inlet



S1-1X2

C Pipe Inlet

DIMENSIONS

MODEL	A	B	C
S1-12X36	49 1/2	14	3 NPT
S1-12X24	37 1/2	14	3 NPT
S1-10X30	42	11 3/4	2 1/2 NPT
S1-10X20	32	11 3/4	2 1/2 NPT
S1-8X24	33 7/8	9 7/8	2 NPT
S1-8X16	25 7/8	9 7/8	2 NPT
S1-6X18	25 7/8	7 1/16	1 1/2 NPT
S1-6X12	19 7/8	7 1/16	1 1/2 NPT
S1-6X9	16 1/4	7 1/16	1 1/2 NPT
S1-6X5	12 3/8	7 1/16	1 1/2 NPT
S1-4X12	17 3/4	4 3/4	1 NPT
S1-4X8	13 3/4	4 3/4	1 NPT
S1-2X4	9	2 1/2	1/2 NPT
S1-1X2	6	1 1/4	1/4 NPT