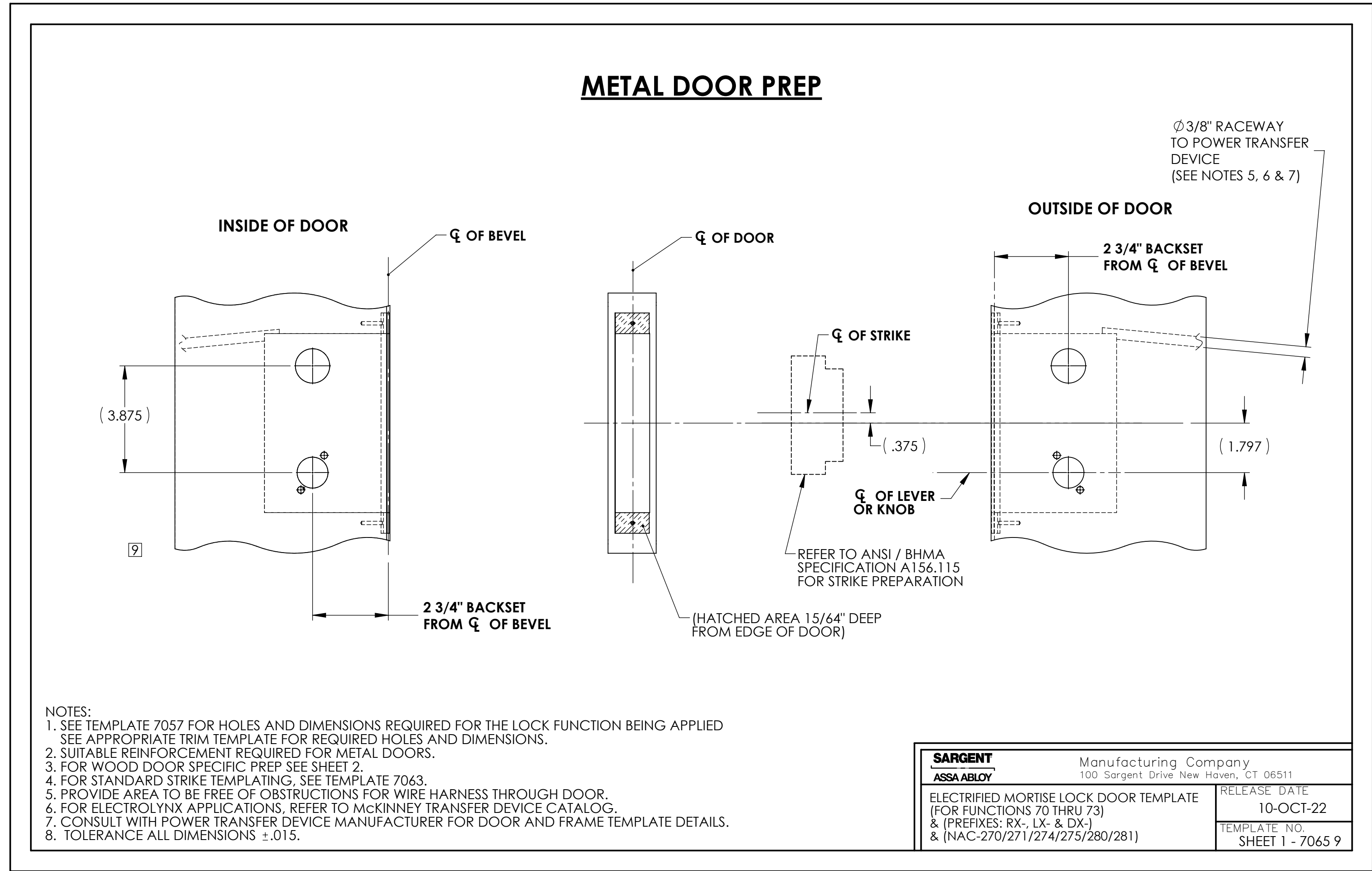


REVISIONS				
ZONE	REV.	DESCRIPTION	DATE	APPROVED
A8, C8, D7	9	REVISED PER EN72931 1. REFERENCE DIMENSIONS REMOVED AND NOTE 1 REVISED 2. SHEET FORMAT UPDATED 3. NOTE 1, MATERIAL COMPLIANCE NOTE ADDED TO DRAWING	10/27/2022	TWF

METAL DOOR PREP



- NOTES:
- SEE TEMPLATE 7057 FOR HOLES AND DIMENSIONS REQUIRED FOR THE LOCK FUNCTION BEING APPLIED SEE APPROPRIATE TRIM TEMPLATE FOR REQUIRED HOLES AND DIMENSIONS.
 - SUITABLE REINFORCEMENT REQUIRED FOR METAL DOORS.
 - FOR WOOD DOOR SPECIFIC PREP SEE SHEET 2.
 - FOR STANDARD STRIKE TEMPLATING, SEE TEMPLATE 7063.
 - PROVIDE AREA TO BE FREE OF OBSTRUCTIONS FOR WIRE HARNESS THROUGH DOOR.
 - FOR ELECTROLYNX APPLICATIONS, REFER TO MCKINNEY TRANSFER DEVICE CATALOG.
 - CONSULT WITH POWER TRANSFER DEVICE MANUFACTURER FOR DOOR AND FRAME TEMPLATE DETAILS.
 - TOLERANCE ALL DIMENSIONS ±.015.

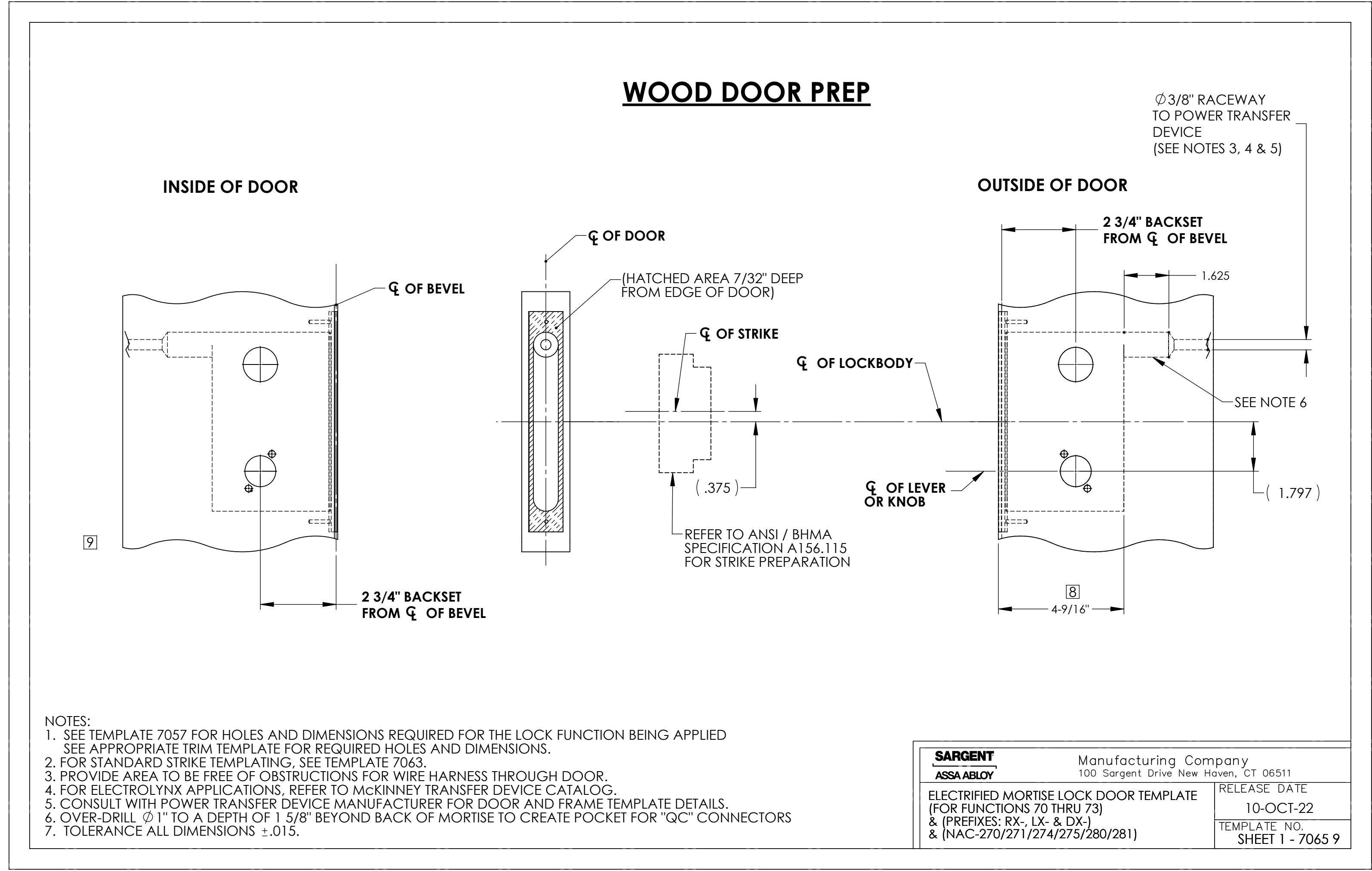
SARGENT ASSA ABLOY	Manufacturing Company 100 Sargent Drive New Haven, CT 06511
ELECTRIFIED MORTISE LOCK DOOR TEMPLATE (FOR FUNCTIONS 70 THRU 73) & (PREFIXES: RX-, LX- & DX-) & (NAC-270/271/274/275/280/281)	RELEASE DATE 10-OCT-22
	TEMPLATE NO. SHEET 1 - 7065 9

NOTICE TO PERSONS RECEIVING THIS DRAWING AND/OR TECHNICAL INFORMATION The material disclosed herein is the confidential and proprietary information of Sargent Manufacturing Company (the "Company"). This drawing and/or technical information is issued in confidence for engineering information only and may not be reproduced or used to manufacture anything, including the items shown or referred to hereon, without direct written permission from the Company. This drawing and/or technical information is the property of the Company and is loaned for mutual assistance to be returned when its purpose has been served or upon the request of the Company.	UNLESS OTHERWISE SPECIFIED TOLERANCES X.X ±.03 X.XX ±.01 X.XXX ±.005 ANGLES ±1° FRACTIONS ±1/64 SURFACE FINISH ✓	DRAWING COMPLIES WITH ASME Y14.5M - 1994 INCH THIRD ANGLE PROJECTION	MATERIAL Oak HEAT TREATMENT	DOOR MANUFACTURERS TEMPLATE ELECTRIFIED MORTISE LOCK	
	ASSA ABLOY Sargent Manufacturing Company New Haven, CT	SURFACE/FINISH MASS 1.671 lb VOLUME 82.591 in³ SURFACE AREA 262.777 in²	DATE CREATED 04/26/2018 DOCUMENT ID D000922352-000 DRAWING NUMBER (ALT ID) 7065	DRAWN BY FRM DESIGNED BY TWF SCALE 1:3 SIZE C	REV 9

- NOTES:
- MATERIAL AND MANUFACTURING PROCESS MUST COMPLY WITH ASSA ABLOY AMERICAS PRODUCT COMPLIANCE SPECIFICATION DOCUMENT ID# D001117360.

REVISIONS				
ZONE	REV.	DESCRIPTION	NAMEDATE	APP/DATE
-	-	See Sheet 1	-	-

WOOD DOOR PREP



- NOTES:
- SEE TEMPLATE 7057 FOR HOLES AND DIMENSIONS REQUIRED FOR THE LOCK FUNCTION BEING APPLIED. SEE APPROPRIATE TRIM TEMPLATE FOR REQUIRED HOLES AND DIMENSIONS.
 - FOR STANDARD STRIKE TEMPLATING, SEE TEMPLATE 7063.
 - PROVIDE AREA TO BE FREE OF OBSTRUCTIONS FOR WIRE HARNESS THROUGH DOOR.
 - FOR ELECTROLYNX APPLICATIONS, REFER TO MCKINNEY TRANSFER DEVICE CATALOG.
 - CONSULT WITH POWER TRANSFER DEVICE MANUFACTURER FOR DOOR AND FRAME TEMPLATE DETAILS.
 - OVER-DRILL $\phi 1"$ TO A DEPTH OF $1 \frac{5}{8}"$ BEYOND BACK OF MORTISE TO CREATE POCKET FOR "QC" CONNECTORS
 - TOLERANCE ALL DIMENSIONS $\pm .015$.

SARGENT ASSA ABLOY	Manufacturing Company 100 Sargent Drive New Haven, CT 06511
ELECTRIFIED MORTISE LOCK DOOR TEMPLATE (FOR FUNCTIONS 70 THRU 73) & (PREFIXES: RX-, LX- & DX-) & (NAC-270/271/274/275/280/281)	RELEASE DATE 10-OCT-22
	TEMPLATE NO. SHEET 1 - 7065 9

NOTICE TO PERSONS RECEIVING THIS DRAWING AND/OR TECHNICAL INFORMATION Sargent Manufacturing Company claims proprietary rights to the material disclosed hereon. This drawing and/or technical information is issued in confidence for engineering information only and may not be reproduced or used to manufacture anything shown or referred to hereon without direct written permission from Sargent Manufacturing Company to the user. This drawing and/or technical information is the property of Sargent Manufacturing Company and is loaned for mutual assistance to be returned when its purpose has been served.	UNLESS OTHERWISE SPECIFIED TOLERANCES X.X $\pm .03$ X.XX $\pm .01$ X.XXX $\pm .005$ ANGLES $\pm 0^{\circ}30'$ FRACTIONS $\pm 1/64$ SURFACE FINISH $\sqrt{\text{A}}$	DRAWING COMPLIES WITH ASME Y14.5M - 1994 INCH MM THIRD ANGLE PROJECTION	MATERIAL Oak HEAT TREATMENT	DOOR MANUFACTURERS TEMPLATE ELECTRIFIED MORTISE LOCK		
	Sargent Manufacturing Company New Haven, CT	MASS 1.837 lb VOLUME 90.807 in ³ SURFACE AREA 265.891 in ²	DATE CREATED 04/26/2018 DRAWN BY FRM DESIGNED BY TWF	DOCUMENT ID D000922352-000 DRAWING NUMBER (ALT ID) 7065	SCALE 1:3 SIZE C	PART NUMBER REV 9
	CONFIGURATION wood door					