

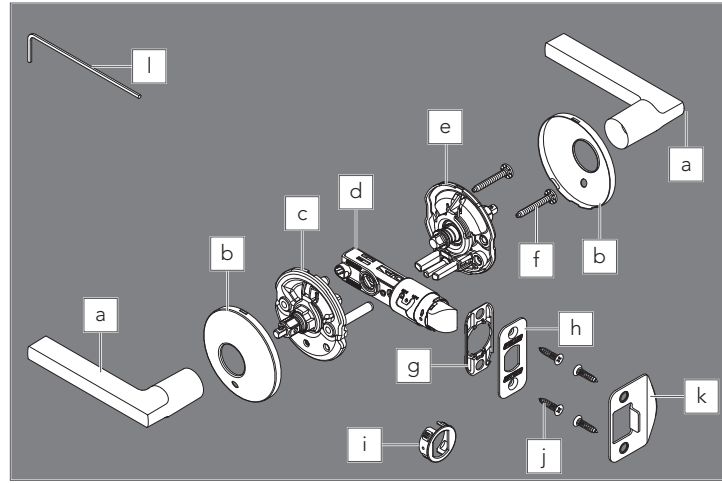


P518-149

## Model FC21, Combined interior

## Installation Instructions

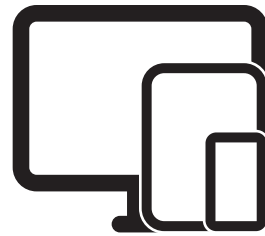
① This lock can be installed as passage (hall/closet) or privacy (bed/bath). See the included Privacy function kit.



- a. Knob/Lever
- b. Trim
- c. Exterior chassis
- d. Latch
- e. Interior chassis
- f. Chassis screws
- g. Backplate
- h. Faceplate
- i. Drive-in faceplate
- j. Latch/strike screws
- k. Strike
- l. Hex wrench (Do not discard!)

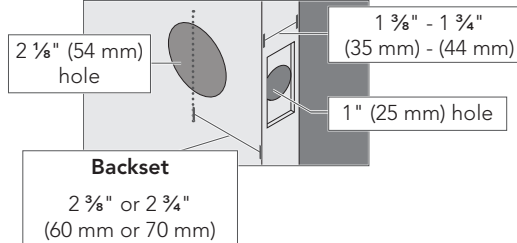
### 1 Watch the installation video.

Go to [Schlage.com/faqs-custom](http://Schlage.com/faqs-custom).



### 2 Check door dimensions.

2a If dimensions do not match, you may need to modify your door.



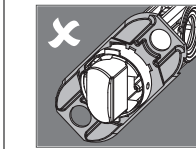
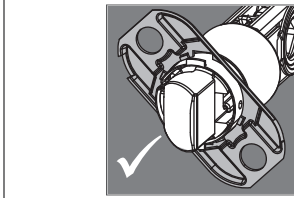
For further assistance, call Customer Service at (888) 805-9837.

2b Check latch length. Measure the **backset** as shown above.

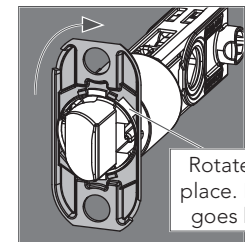
- 2 3/8" (60 mm): no adjustment is necessary.
- 2 3/4" (70 mm): see the **Adjust latch** section.

### 3 Install the latch.

3a Install backplate.

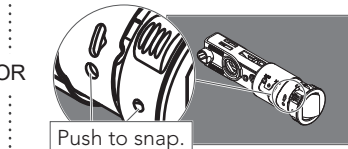


This backplate is backward.



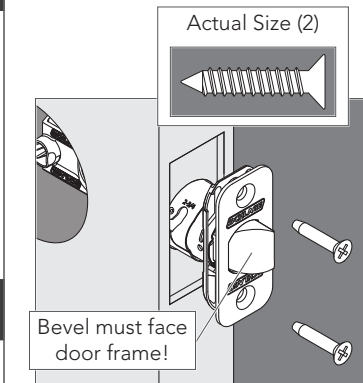
Rotate into place. Notch goes here.

OR 3a Install drive-in faceplate.



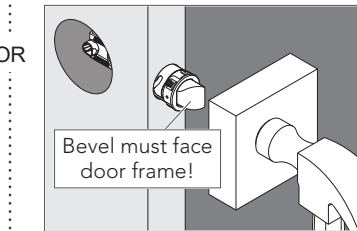
Push to snap.

3b Add faceplate and secure with screws.



Bevel must face door frame!

OR 3b Use wood block and hammer.



Bevel must face door frame!

### 4 Install the strike onto the door frame.

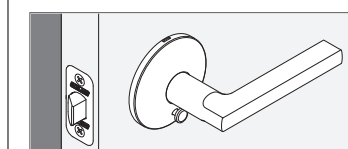
Use included strike for best performance.



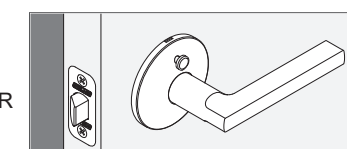
Actual Size (2)

### 5 PRIVACY FUNCTION ONLY: Choose privacy pin location.

Location is based on preference and does not change the function.

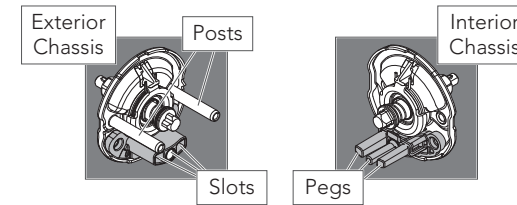


Pin on bottom, go on to step 6.

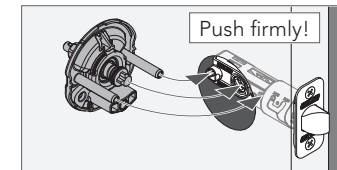


Pin on top, go to [Schlage.com/faqs-custom](http://Schlage.com/faqs-custom).

### 6 Identify the exterior and interior chassis



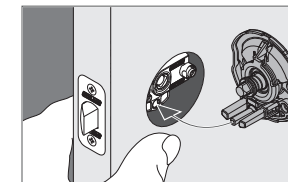
### 7 Install the exterior chassis.



Push firmly!

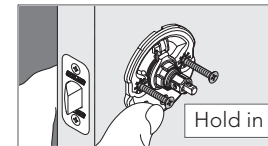
### 8 Install the interior chassis.

8a Chassis is spring-loaded. Push pegs into slots and hold in place.

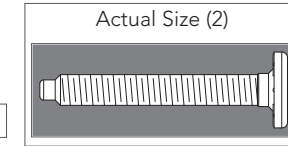


8b Secure with two (2) screws.

Make sure chassis is straight!



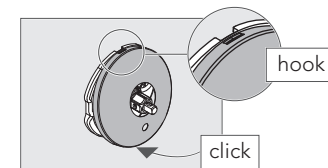
Hold in place!



Actual Size (2)

### 9 Install the trim.

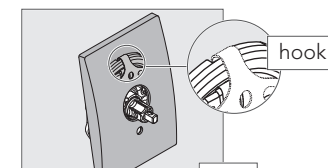
① Align hole in trim with hole in chassis.



hook

click

OR



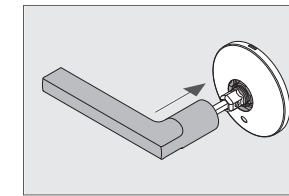
hook

click

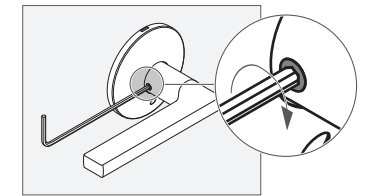
Repeat for the other side of the door.

### 10 Install the exterior knob/lever.

10a Push knob/lever firmly into place.

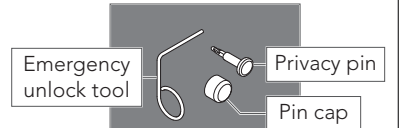


10b Then tighten set screw.



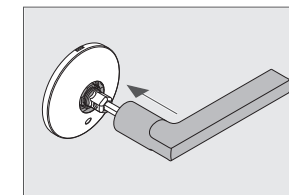
### 11 PRIVACY FUNCTION ONLY: Install the privacy pin.

Follow the included Privacy function kit instructions.

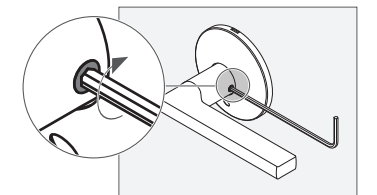


### 12 Install the interior knob/lever.

12a Push knob/lever firmly into place.

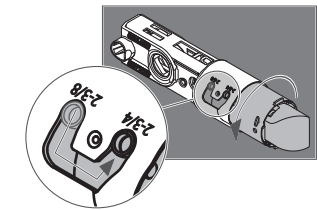


12b Then tighten set screw.



### Adjust latch

For 2 3/4" backset, rotate and pull latch out to long setting.



Customer Service

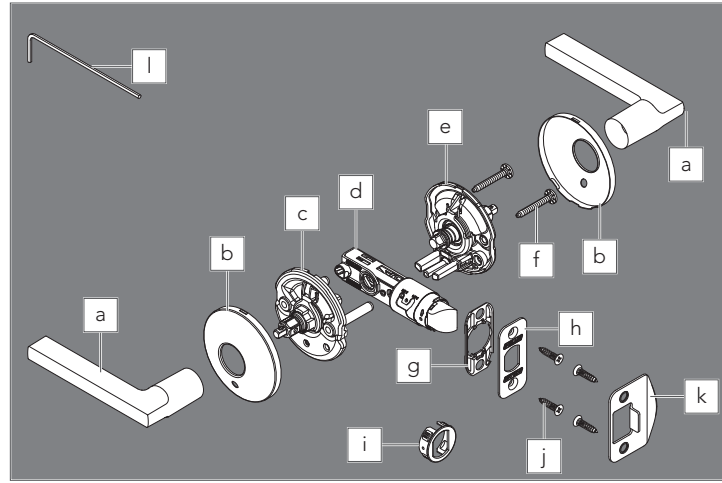
(888) 805-9837

[www.schlage.com](http://www.schlage.com)

## Modelo FC21, Interior combinado

## Instrucciones de instalación

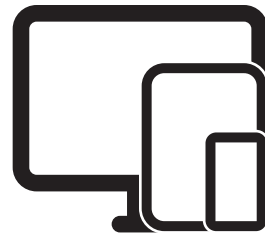
① Esta cerradura se puede instalar como paso (pasillo/armario) o por privacidad (dormitorio/baño).



- a. Pomo/manija
- b. Moldura
- c. Chasis exterior
- d. Pestillo
- e. Chasis interior
- f. Tornillos del chasis
- g. Placa posterior
- h. Placa frontal
- i. Placa frontal de inserción
- j. Tornillos del pestillo/batiente
- k. Batiente
- l. Llave hexagonal (¡no desechar!)

### 1 Vea el video de instalación.

Visite [Schlage.com/faqs-custom](http://Schlage.com/faqs-custom).



### 2 Verifique las dimensiones de la puerta.

2a Si las dimensiones no concuerdan, es posible que tenga que modificar su puerta.

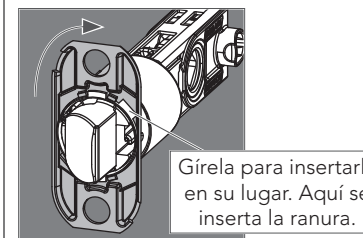
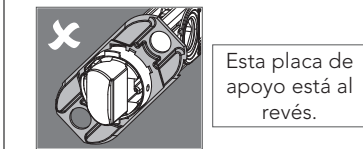
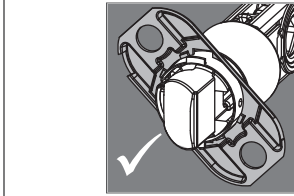
En caso de necesitar asistencia, póngase en contacto con Servicio al Cliente al 1-888-805-9837.

2b Compruebe la longitud del pestillo. Mida la **entrada de la cerradura** tal como se muestra.

- 2 3/8" (60 mm): no hace falta ajustar.
- 2 3/4" (70 mm): consulte la sección de **Ajustar el pestillo**.

### 3 Instale el pestillo.

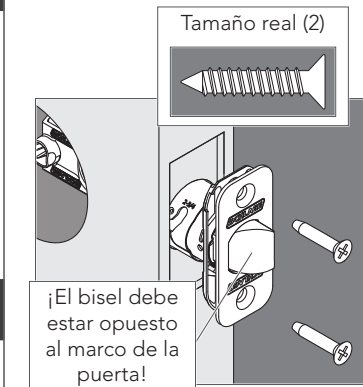
3a Instale la placa posterior.



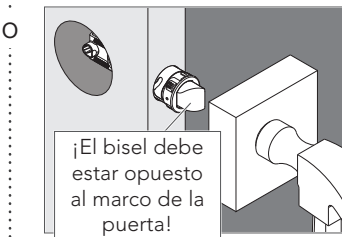
3a Instale la placa delantera de inserción.



3b Agregue la placa delantera y sujete con tornillos.



3b Utilice un bloque de madera y un martillo.



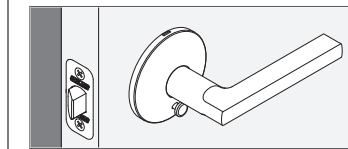
### 4 Instalar el batiente en el marco de la puerta.

Use el batiente incluido para tener un mejor rendimiento.

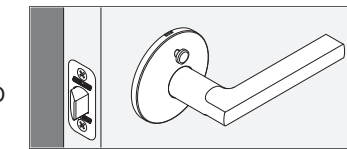


### 5 FUNCIÓN DE PRIVACIDAD SOLAMENTE: Elija la ubicación del pasador de privacidad.

La ubicación se basa en la preferencia y no cambia la función.

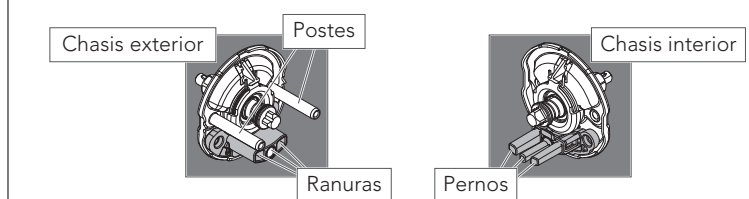


Pasador en la parte inferior, continúe con el paso 6.

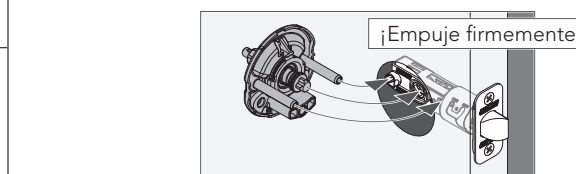


Pasador en la parte superior, visite [Schlage.com/faqs-custom](http://Schlage.com/faqs-custom).

### 6 Identifique el chasis exterior e interior.

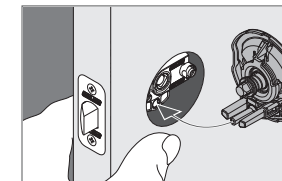


### 7 Instale el chasis exterior.



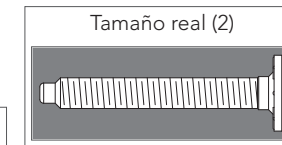
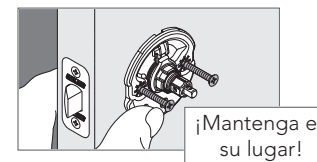
### 8 Instale el chasis interior.

8a El chasis se acciona mediante resorte. Coloque los pernos en las ranuras y sostenga en su lugar.



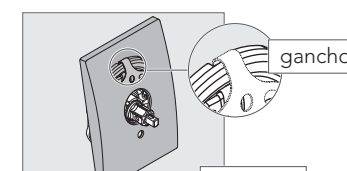
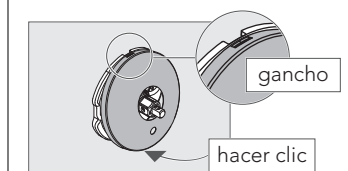
8b Fije con dos (2) tornillos.

¡Asegúrese de que el chasis esté recto!



### 9 Instale la moldura.

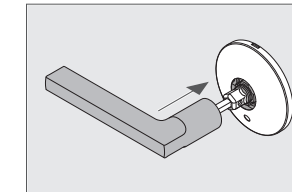
① Alinee el orificio en la moldura con el orificio en el chasis.



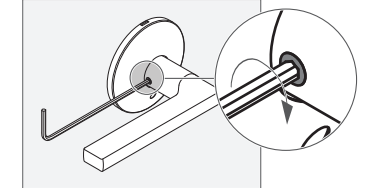
Repita para el otro lado de la puerta.

### 10 Instale la perilla/manija exterior.

10a Empuje la perilla/manija firmemente para colocarlas en su lugar.

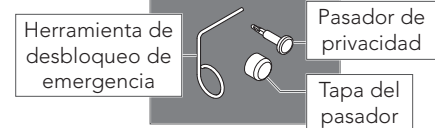


10b Luego, apriete el tornillo de fijación.



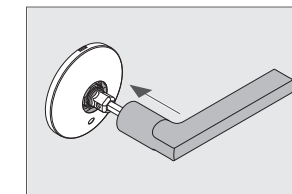
### 11 FUNCIÓN DE PRIVACIDAD SOLAMENTE: Instale el pasador de privacidad.

Siga las instrucciones en el **Juego de funciones de privacidad** incluido.

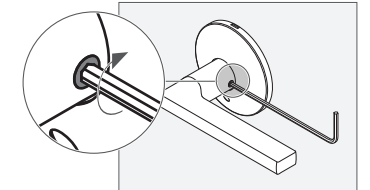


### 12 Instale la perilla/manija interior.

12a Empuje la perilla/manija firmemente para colocarlas en su lugar.

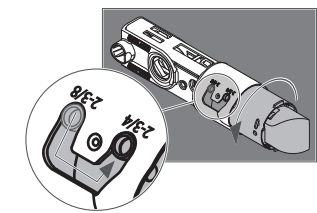


12b Luego, apriete el tornillo de fijación.



### Ajuste el pestillo

Para la **entrada de la cerradura de 2 3/4" (69 mm)** de espesor, gire y tire del pestillo hacia fuera hasta un ajuste largo.



Service à la clientèle

1-888-805-9837

[www.schlage.com](http://www.schlage.com)

