

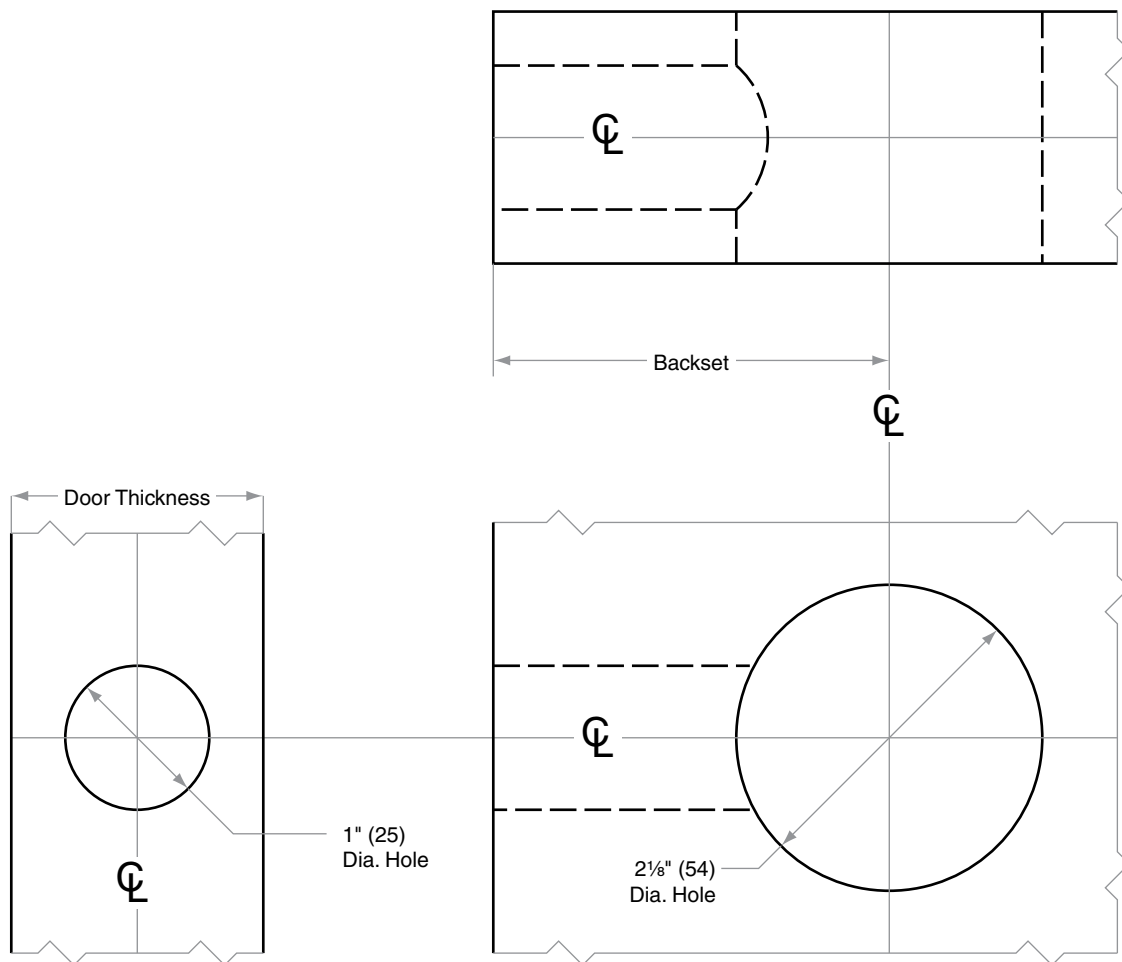


FC-Series

FC21

Door Type: Wood or Composite, Flat
Door Thickness: $1\frac{3}{8}$ " (35 mm)– $1\frac{3}{4}$ " (44 mm)
Faceplate: Circular Drive-In
Backsets: $2\frac{3}{8}$ " (60 mm), $2\frac{3}{4}$ " (70 mm)

Standard backset in bold.



Dimensions shown in parentheses () are in millimeters.

© 2018 Allegion
RFC102 Rev. 03/18
www.allegion.com/us

DRAWING IS NOT TO SCALE!
Customer service: 888-805-9837
We can help you find the correct guide for your product and application!

Door preparation guide

RFC102