

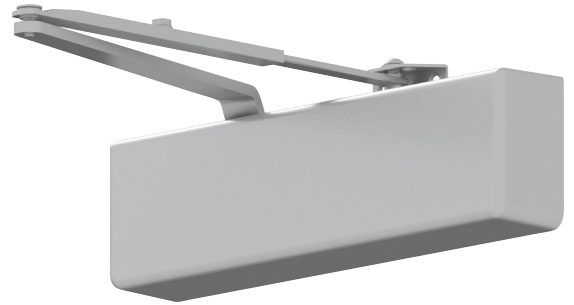
FALCON®

Surface mounted closer

SC70A Series

Overview

The heavy-duty SC70A Series is built for busy commercial and institutional applications that require reliability and easy maintenance. With a variety of mounting options, arm types and installation accessories available, the SC70A Series is suitable for a variety of applications, including interior or exterior doors in schools, retail shops, restaurants, offices and apartment complexes.



Cylinder

SC71A-3017

Single piece cast aluminum cylinder assembly

Handing

Non-handed

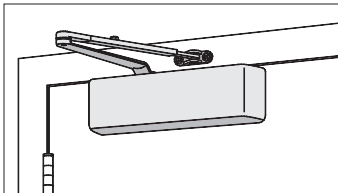
Sizing

Adjustable spring size 1-6

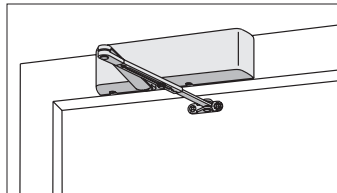
Available cylinder options

DEL	Delayed action cylinder
-----	-------------------------

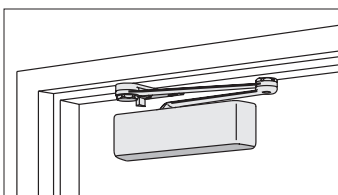
Mounting



Hinge (pull side)



Top jamb (push side)



Parallel arm (push side)

Finishes

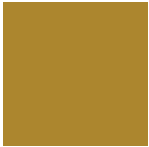
Powder coat finishes



689
Aluminum

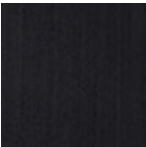


695
Dark Bronze



696
Brass

Metal plate finishes



622¹
Matte Black

Covers

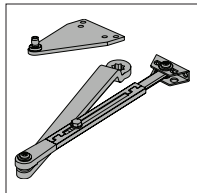
Standard cover



SC70A-72
Full plastic cover
▪ Non-handed

¹ Only available on standard cylinders and RW/PA, HW/PA, DS, and HD arms.

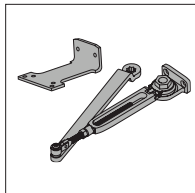
Arms



SC70A-3077PA

Regular arm

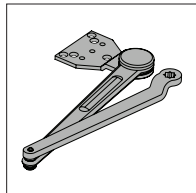
- Non-handed
- Adjustable forearm assembly for range of door and frame reveal conditions
- Mounts hinge side, top jamb or parallel arm
- PA shoe allows install in a parallel arm configuration



SC70A-3049PA

Hold-open arm

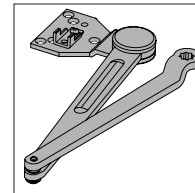
- Non-handed
- Adjustable forearm assembly for range of door and frame reveal conditions
- Mounts hinge side, top jamb or parallel arm
- PA shoe allows install in a parallel arm configuration
- Optional



SC70A-3077HD

Heavy duty regular arm

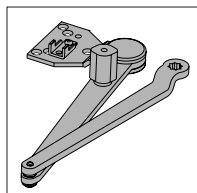
- Non-handed
- Stamped, heavy duty, parallel arm for use in high-traffic applications
- Optional



SC70A-3077DS

Dead stop arm

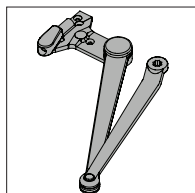
- Non-handed
- Stamped, heavy duty, parallel arm
- Includes positive mechanical stop and non-adjustable forearm assembly for potentially abusive installations
- Optional



SC70A-3049DS

Dead stop hold-open arm

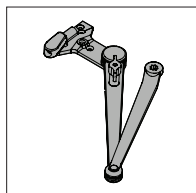
- Non-handed
- Stamped, heavy duty, hold-open parallel arm
- Includes positive mechanical stop and non-adjustable forearm assembly for potentially abusive installations
- Includes a manually selective hold-open function
- Optional



SC70A-3077SS

Spring-n-stop arm

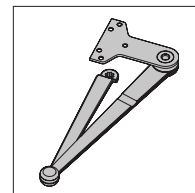
- Non-handed
- Extra heavy-duty, forged parallel
- Integral spring stop and non-adjustable forearm assembly for potentially abusive installation conditions
- Optional



SC70A-3049SS

Spring-n-stop hold-open arm

- Non-handed
- Extra heavy-duty, forged parallel arm
- Integral spring stop and non-adjustable forearm assembly for potentially abusive installation conditions
- Includes manually selective hold-open function
- Optional

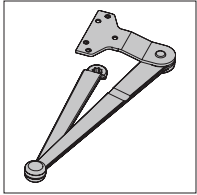


SC70A-3077FA

Forged arm

- Non-handed
- Extra heavy-duty arm with parallel arm bracket
- Forged steel main arm and forearm for maximum durability in potentially abusive applications
- Parallel arm (PA) bracket is a permanent feature, requiring parallel arm type configuration with installation on "push" side
- Optional

Arms

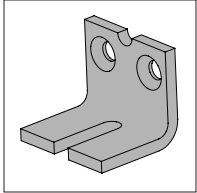


SC70A-3049FA

Forged arm with hold open

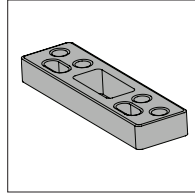
- Left or right handed
- Extra heavy-duty arm with parallel arm bracket that incorporates a hold open feature
- Includes forged steel main arm and forearm for maximum durability in potentially abusive applications
- Parallel arm (PA) bracket is a permanent feature, requiring parallel arm type configuration with installation on “push” side
- Optional

Installation accessories



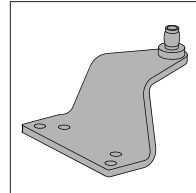
SC70A-30
Soffit shoe support

- Anchorage for fifth screw used with soffit shoe, where reveal is less than 3 1/16" (78mm)



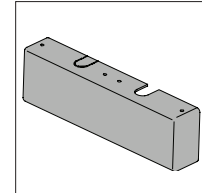
SC70A-61
Blade stop spacer

- Required to lower parallel arm shoe to clear 1/2" (13mm) blade stop



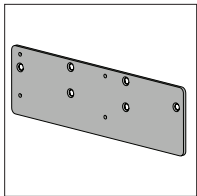
SC70A-62A
Auxiliary shoe

- Requires top rail of 7" (178mm)
- PA shoe replacement for parallel arm mounting of regular arm with overhead holder/stop
- Optional



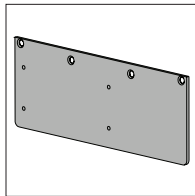
SC70A-72
Cover

- Standard, non-handed, full plastic cover encloses the closer body



SC70A-18
Plate

- Required for hinge side mount where top rail is less than 3 7/8" (98mm)
- Required for top jamb mounting where head frame is less than 3 7/8" (98mm)



SC70A-18PA
Plate

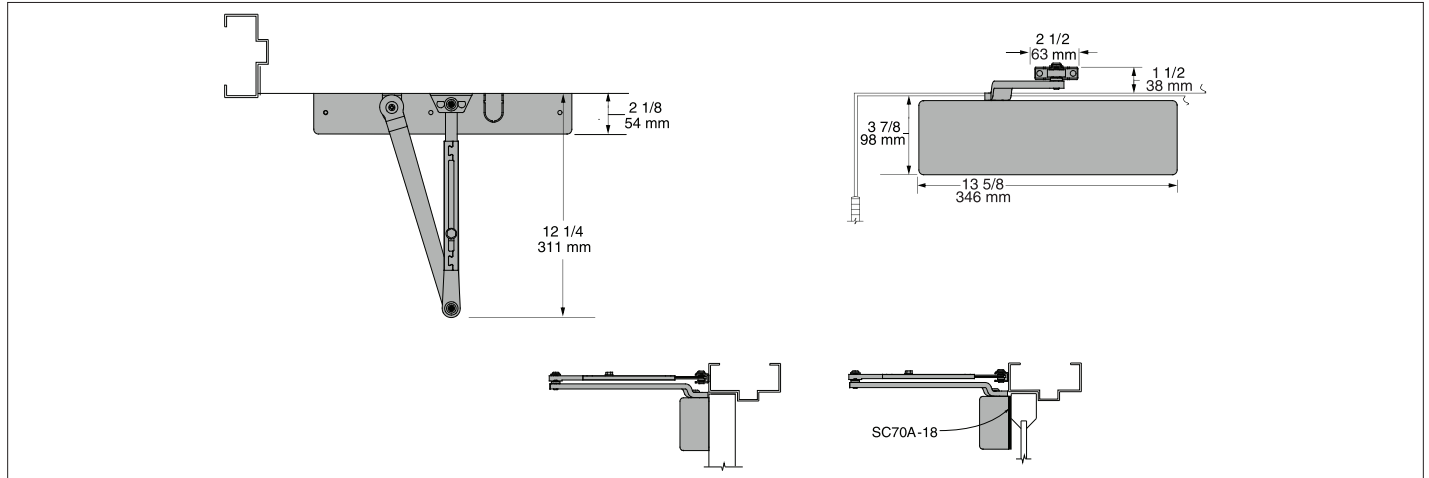
- Required for parallel arm mounting where top rail is less than 6" (152 mm), measured from stop
- Plate requires 1 3/4" (44mm) minimum top rail, measured from stop

Fasteners

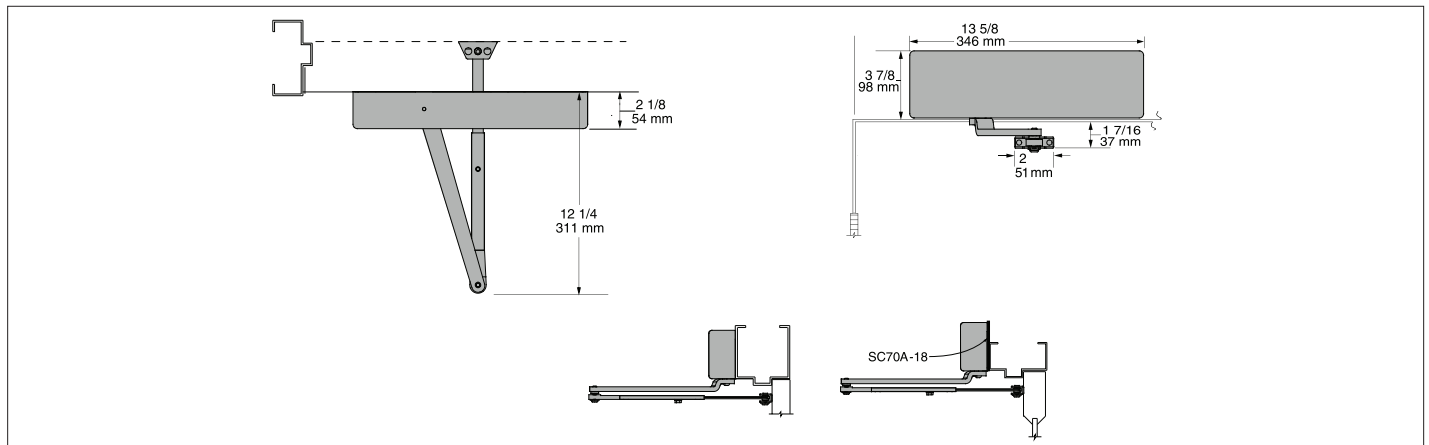
Comes standard with universal screw pack (UNIV), including self reaming and tapping screws

Dimensions and mounting

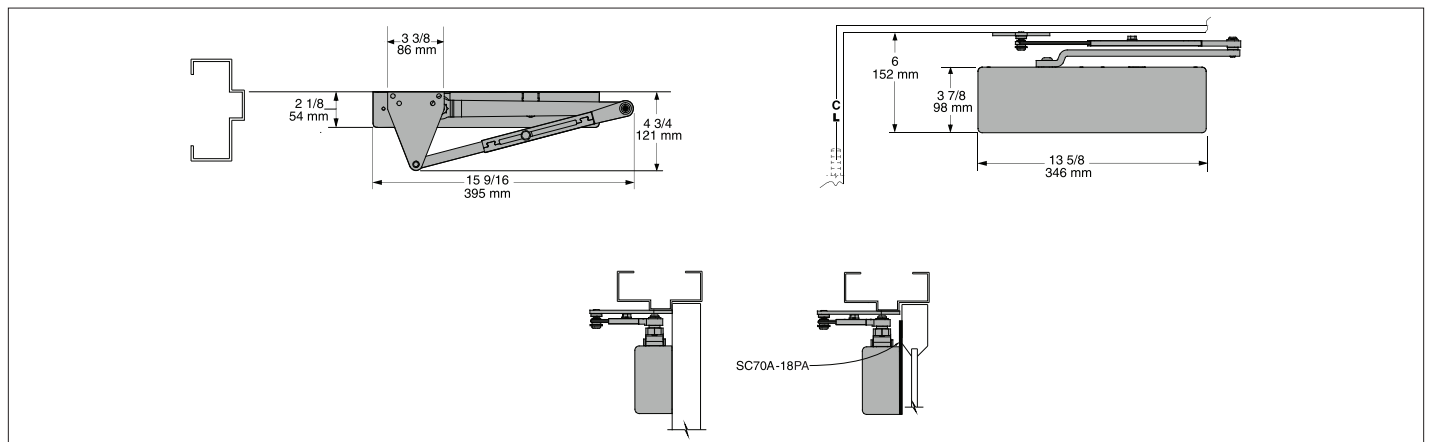
SC70A Series hinge (pull side)



SC70A Series top jamb (push side)

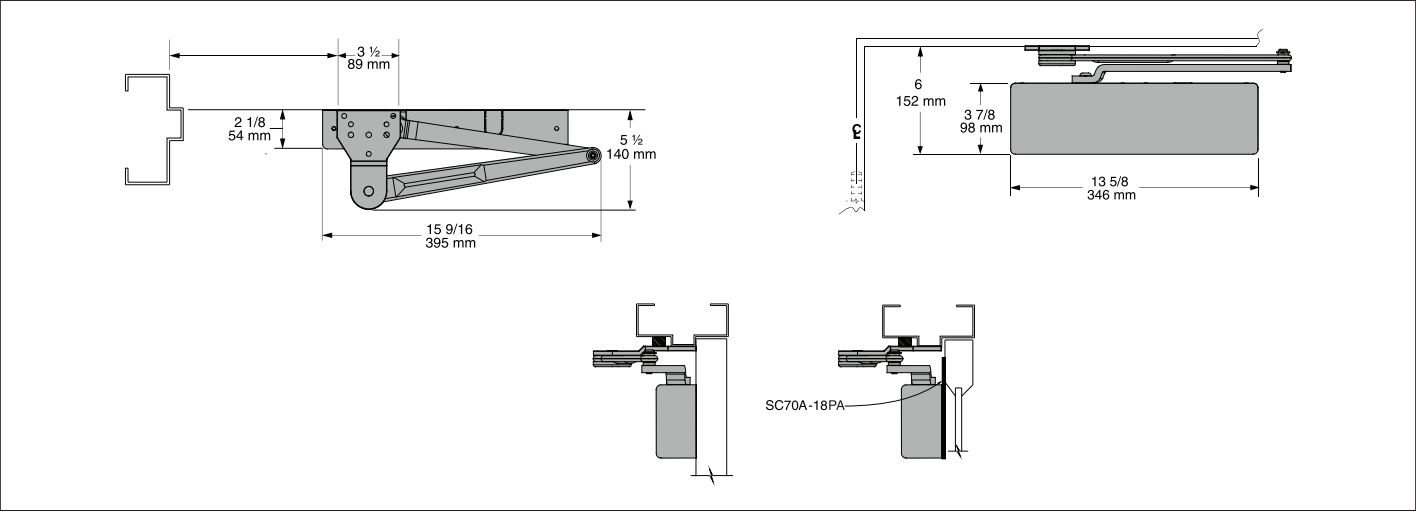


SC70A Series parallel (push side)

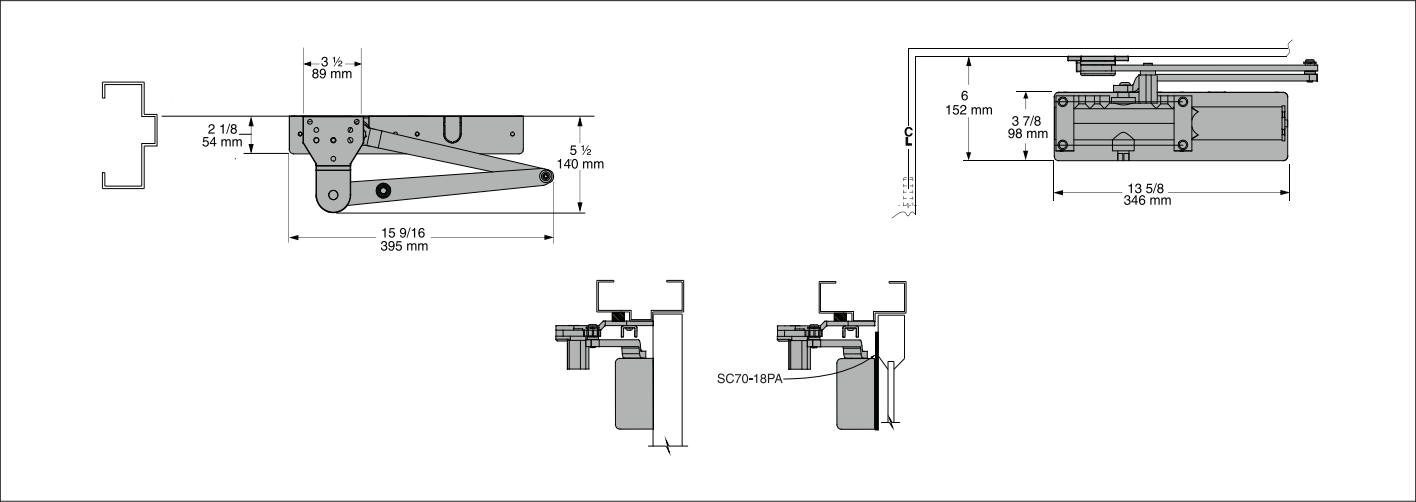


Dimensions and mounting

SC70A Series heavy duty (parallel)



SC70A Series dead stop HO (parallel)



Specifications

Accessibility	Available with less than 5.0 lbs. opening force on 36" door
Certifications/ approvals	<ul style="list-style-type: none"> ▪ Grade 1 ANSI/BHMA A156.4 ▪ UL10C and UBC 7-2 (1997) ▪ Meets the American Disabilities Act (ADA)
Degree of operation	<p>Hinge (pull side) mount</p> <p>Max opening: 180°</p> <p>Hold open: Hold Open point is adjustable, up to 180°</p> <p>Top jam (push side) mount</p> <p>Max opening: 180°</p> <p>Hold open: Adjustable up to 180°</p> <p>Parallel arm</p> <p>Max opening: 180°</p> <p>Hold open: Adjustable up to 180°</p> <p>Heavy duty arm</p> <p>Max opening: 180°</p> <p>Hold open: "Heavy Duty" hold open is not available.</p> <p>Dead stop HO arm</p> <p>Max opening: 110°</p> <p>Hold open: 85°, 90°, 95°, 100°, 105°, 110° (not adjustable)</p>
Environmental conditions	<ul style="list-style-type: none"> ▪ Approved for interior use ▪ Standard all weather fluid ▪ Separate adjustable general speed, latch speed and backcheck
Warranty	10 years
Standard features	<ul style="list-style-type: none"> ▪ 1 1/2" diameter heat treated steel piston ▪ Double heat-treated pinion