

# **FALCON**<sup>®</sup>

*Trims and Strikes*

*Service Manual - Discontinued*

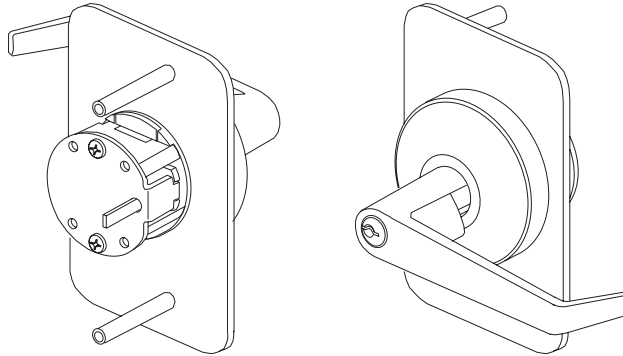
*Exit Device*

A decorative graphic element consisting of a thin, light gray curved line that starts near the bottom left and arcs upwards towards the right, ending near the top right. Below this line is a solid dark gray area that also curves from the bottom left towards the right, creating a layered, abstract background effect.

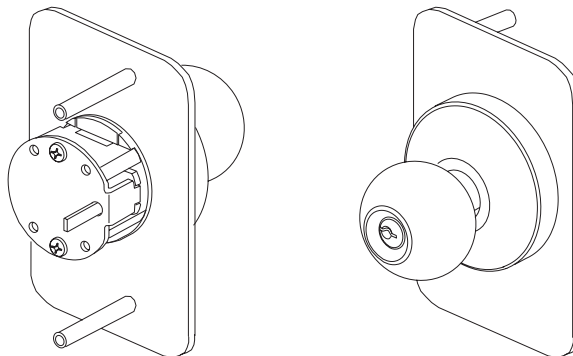
# Trim Illustrations

These illustrations are for identification purposes only for the following trim.

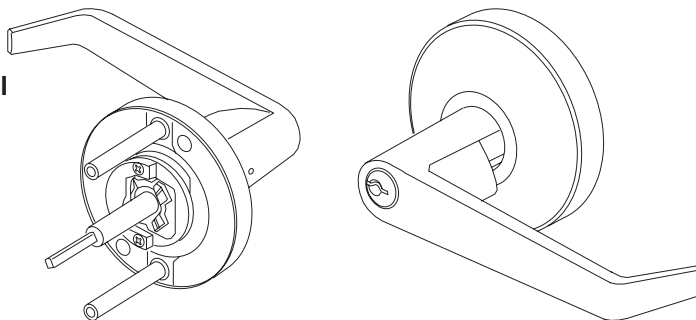
**2400 KIL**  
For 19 Series Devices



**2410 KIK**  
For 19 Series Devices



**2030 KIL**  
For 18/XX Rim/18 Vertical  
Series Devices



Please note that parts are not available for Monarch trim.

# Table of Contents

## Sections

Page	
<b>Table of Contents</b> .....	<b>2</b>
<b>Trim</b> .....	<b>3-30</b>

## 19 Series

	<b>Page</b>
K, K-NL, K-(LS/LK) and K-DT Knob Control .....	3
T, T-NL, T-(LS/LK) and T-DT Thumbpiece Control Trim .....	4
DT and P Control Trim .....	5
L, L-NL, L-(LS/LK) & L-DT Lever Control Trim & Parts .	6-7
Trident and Centron Trim .....	8
Cover Plates .....	9

## XX/18 Series

	<b>Page</b>
T, DT and P Standard Trim .....	10
T, DT and P Apollo Trim .....	11
T DT, P and Vanguard Trim .....	12
T, DT, P and Zephyr Trim .....	13
K, K-(LS/LK) and K-DT Knob Trim .....	14
L, L-(LS/LK) and L-DT Lever Trim .....	15
L, L-(LS/LK) and L-DT Lever Trim Parts .....	16
K, K-NL, K-(LS/LK) and K-DT Concealed Knob Trim .....	17

## XX/18 Series

	<b>Page</b>
T, T-NL, T-(LS/LK) and T-DT Concealed Delta Thumbpiece Trim .....	18
C, DT and P Concealed Delta Trim .....	19
SL, SL-NL, SLP-NL, SL-(LS/LK), SLP and SLP-(LS/LK) Concealed Delta Trim .....	20
L, L-NL, L-(LS/LK) & L-DT Concealed Lever Trim .	21-22
SL, SL-NL and SL-(LS/LK) Control Trim (Surface Vertical) .	30

## 17 Series

	<b>Page</b>
K, K-NL, K-(LS/LK) and K-DT Control Trim .....	23
T, T-NL, T-(LS/LK) and T-DT Delta Thumbpiece Trim .	24
L, L-NL, L-(LS/LK) and L-DT Lever Control Trim .....	25
DT and P Control Trim .....	27
DT and P Standard Trim .....	12
DT and P Zephyr Trim .....	15
T, T-NL and T-(LS/LK) Control Thumbpiece Trim ..	28
C, DT and P Delta Trim .....	29
SL, SL-NL, SL-(LS/LK) Delta Trim (Surface Vertical) .	30
K, K-NL, K-(LS/LK) and K-DT Concealed Knob Trim .	17
T, T-NL, T-(LS/LK) and T-DT Concealed Delta Thumbpiece Trim .....	18
C, DT and P Concealed Delta Trim .....	19
SL, SL-(LS/LK), SLP and SLP-(LS/LK), SL-NL, SLP-NL Concealed Delta Trim .....	20
L, L-NL, L-(LS/LK) & L-DT Concealed Lever Trim .....	26

## Glossary of Terms

K, KE .....	Knob Trim
L, LE .....	Lever Trim
P .....	Cylinder Operator with Pull Trim
T .....	Thumbpiece
SL .....	Thumbturn Trim
C .....	Cylinder Operator
KIK .....	Key-in-Knob Trim
KIL .....	Key-in-Lever Trim
(LS/LK) .....	Less Locking
DT .....	Dummy Trim
Series R .....	Rim Device
Services V .....	Surface Vertical Rod Device
Series M .....	Mortise Device
Series C .....	Concealed Vertical Rod Device
Series TPL .....	Mortise X Surface Vertical Rod Device
CR .....	Cylinder Removable Mullion
NL .....	Night Latch

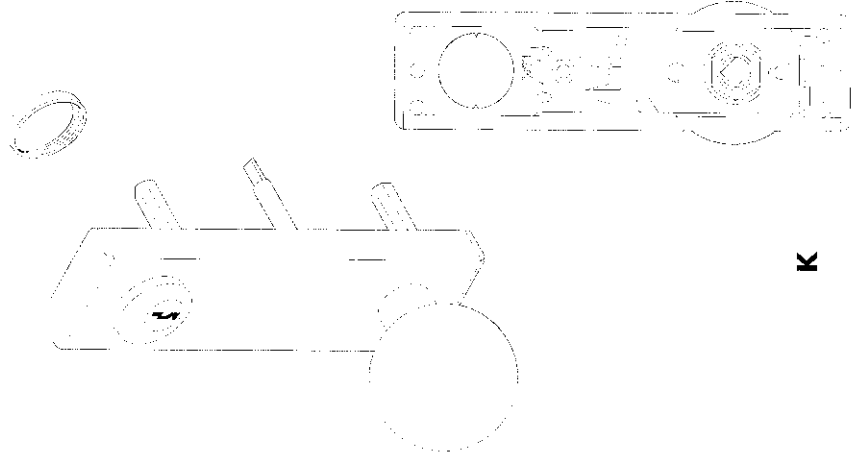
# Control Trim

# 19 Series

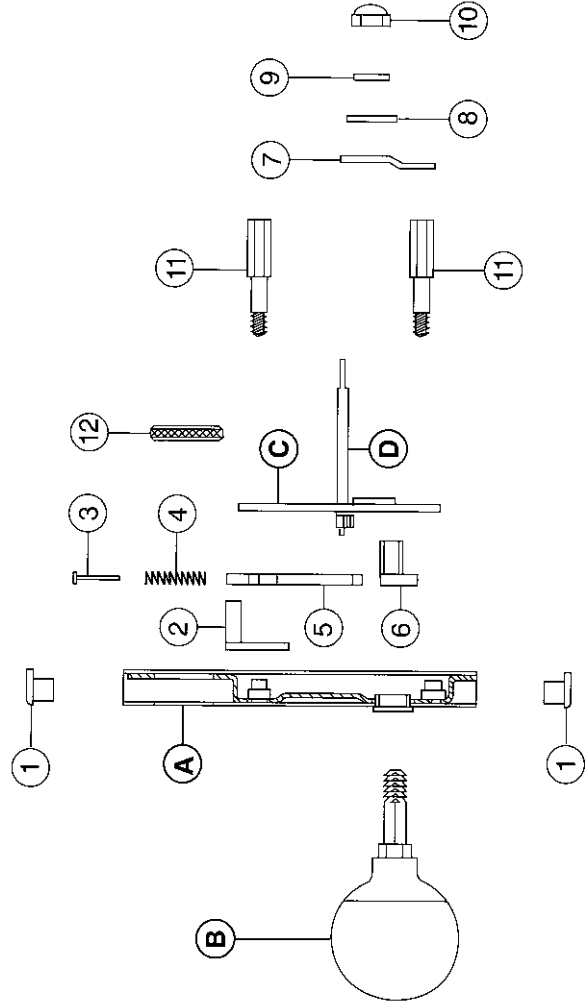
K (1907), K-(LS/LK) (1927),  
K-NL (1907NL) and K-DT (1937)

Item	Quantity			Part No.	Description	Finish
	K	K-(LS/LK)	K-NL			
A	1	1		900231	Control Housing Sub Assembly	◆
		1		900232	Control Housing Sub Assembly	◆
B	1	1	1	900529	Hana Knob Sub Assembly	◆
C	1	1	1	900236	Retaining Plate Sub Assembly	
D	1	1	1	942670	Actuator Shaft Sub Assembly	
1	2	2	2	4583	Plastic End Caps	
2	1	1		4268	Locking Plate	
3	1	1		709239	3/32" x 3/4" Solid Rivet	
4	1	1		4605	Actuator Spring	
5	1	1		4265	Actuator Plate	
6	1	1		4274	Knob Hub	
7				4302	Rigid Lever Plate	
8				709149	Flat Washer	
9				709202	Flat Washer	
10	1	1	1	709157	3/8" - 16 ESNA Lock Nut	
11	2	2	2	4270	Hex Stud	
12	1	1		3894	Cylinder Nut	
Part not Shown				6166	NL Spring	

1. Items marked ◆ specify by finish: MAL, MI 3, SS/26D.



**K**



**MONARCH**  
Exit Devices & Door Hardware

Questions? Call: 800-826-5792 / FAX: 800-924-3551  
Monarch Hardware 805 N. Buckman Shepherdsville KY 40165 / Visit us on the Internet at [www.monarchhardware.com](http://www.monarchhardware.com)

# Control Trim

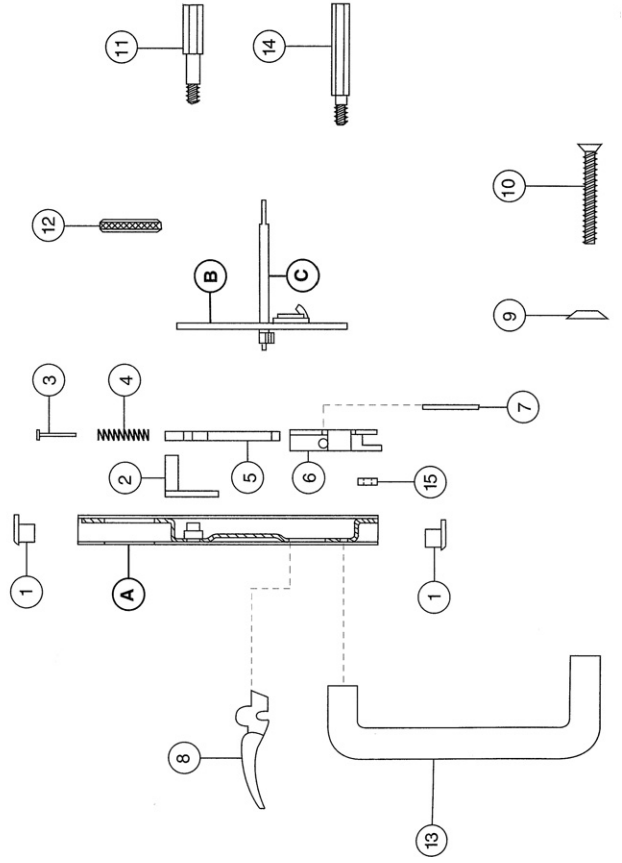
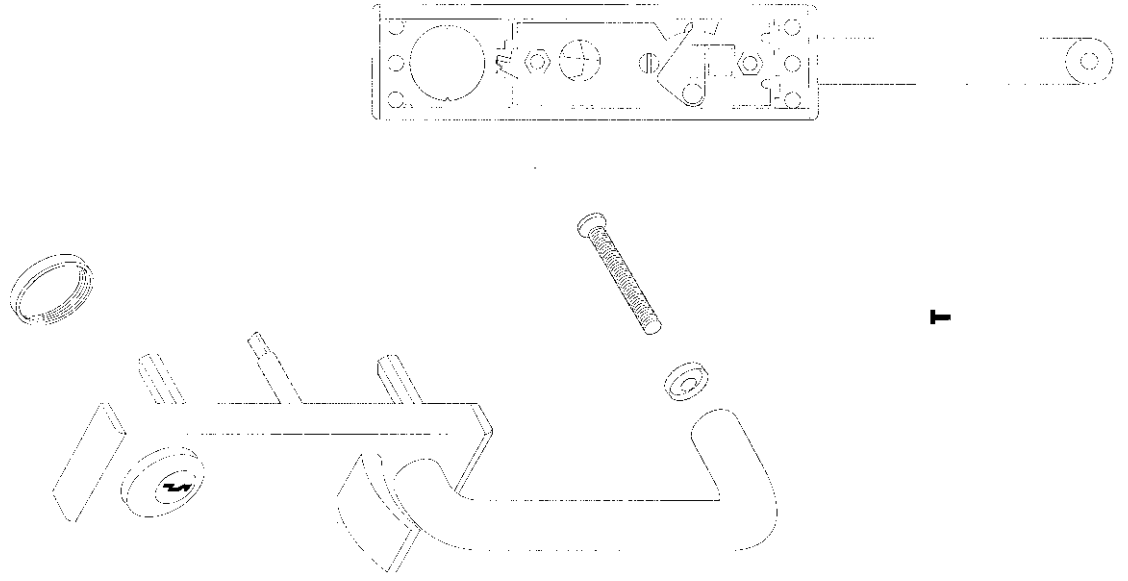
# 19 Series

T (1906), T-(LS/LK) (1926)  
and T-NL (1906-NL)

Item	Quantity		Description	Finish	Remarks
	T	T-(LS/LK)			
A	1	1	Control Housing Sub Assembly	◆	
			Control Housing Sub Assembly	◆	
B	1	1	Retaining Plate Sub Assembly		
C	1	1	Actuator Sub Assembly		
			Plastic End Caps		
			Locking Plate		
			3/32" x 3/4" Solid Rivet		
			Actuator Spring		
			Actuator Plate		
			Thumbpiece Bracket		
			1/8" x 1 - 1/4" Pin Type "C"		
			Thumbpiece	◆	
			1/4" CSK Finish Washer	◆	See Note #2
			1/4" - 20 x 2 - 1/4" FPHMS	◆	See Note #2
			Hex Stud		
			Cylinder Nut		
			Pull Grip	◆	
			Hex Stud		
			Spacer		
			NL Spring		
			Part not Shown		

1. Items marked ◆ specify by finish: MAL, M13, SS/26D.

2. Items without part number specify by description and finish.

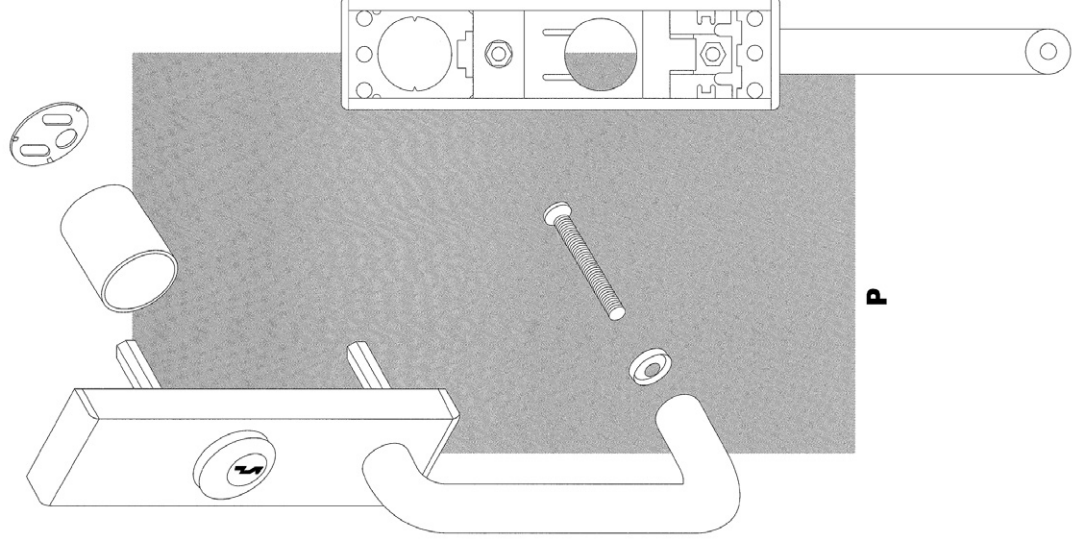
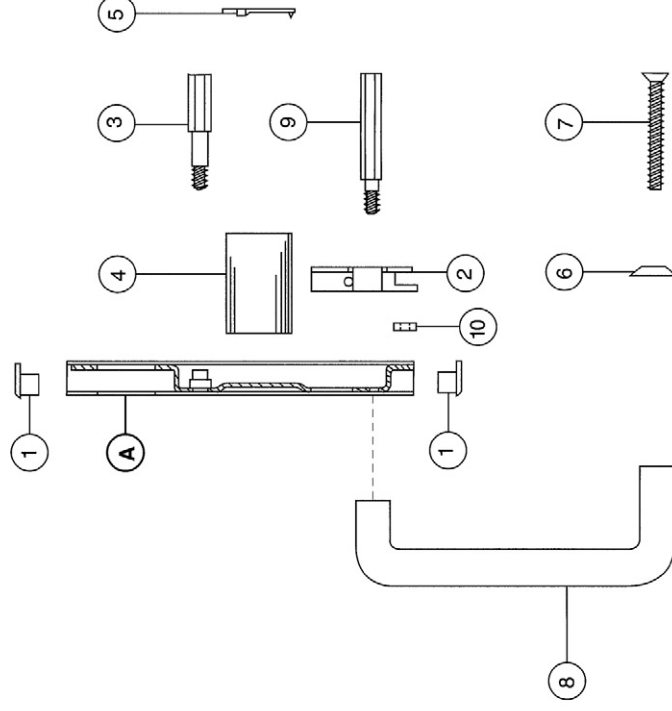


# Control Trim 19 Series DT (1908) and P (1909)

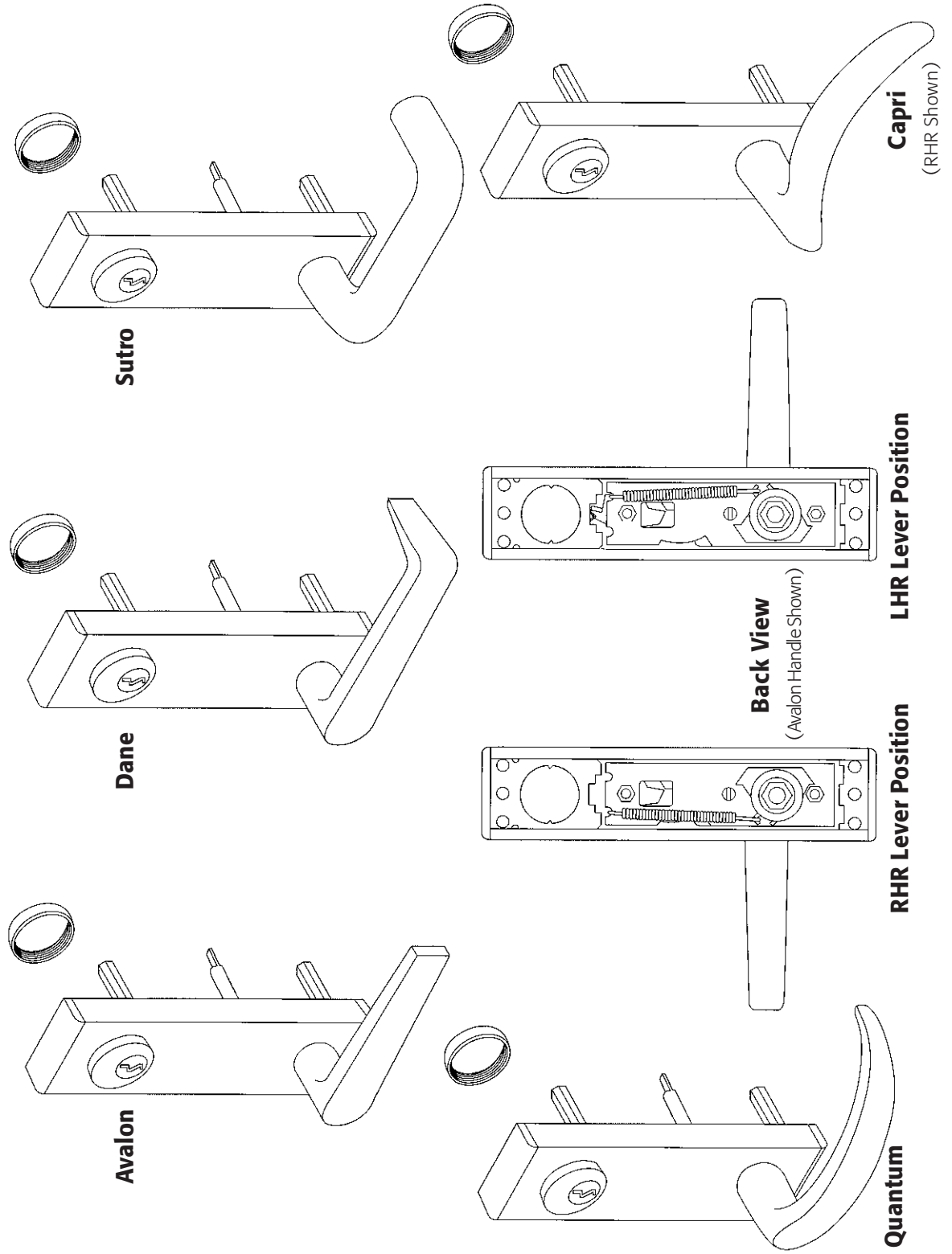
Item	Quantity		Description	Part No.	Finish	Remarks
	DT	P				
A	1		Control Housing Sub Assembly	900369	◆	
	1		Control Housing Sub Assembly	900370	◆	
1	2	2	Plastic End Caps	4583		
2	1	1	Thumbpiece Bracket	4603		
3	1	1	Hex Stud	4270		
4	1	1	Cylinder Spacer Collar	4120		
5	1	1	Cylinder Anchor Plate	4121	◆	See Note #2
6	1	1	1/4" CSK Finish Washer		◆	See Note #2
7	1	1	1/4" - 20 x 2-1/4" FPHMS		◆	
8	1	1	Pull Grip	4256		
9	1	1	Hex Stud	4201		
10	1	1	Spacer	4861		

1. Items marked ◆ specify by finish: MAL, M13, SS/26D.

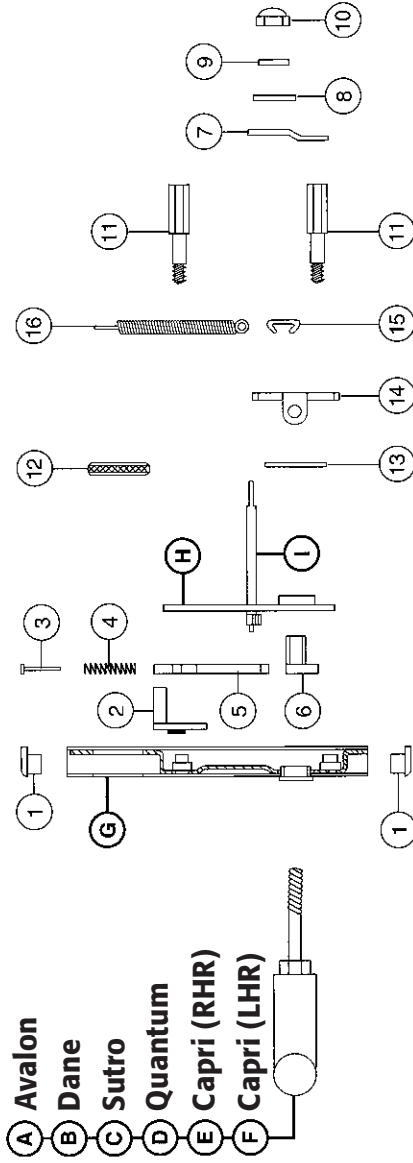
2. Items without part number specify by description and finish.



Lever Control Trim  
**19 Series**  
 L, L-(LS/LK), L-NL and L-DT



# L Control 19 Series Parts List



Model Information Chart

Trim	Avalon	Dane	Sutro	Quantum	Capri (RHR)	Capri (LHR)
L	1911	1910	1912	1919	1923	1924
L-(LS/LK)	1921	1920	1922	1929	1933	1934
L-DT	1931	1930	1932	1939	1943	1944
L-NL	1911NL	1910NL	1912NL	1919NL	1943NL	1944NL

Item	Avalon		Dane		Sutro		Quantum		Capri (RHR)		Capri (LHR)		Part No.	Description	Finish	Remarks
	L	L-NL	L	L-NL	L	L-NL	L	L-NL	L	L-NL	L	L-NL				
A	1	1	1	1	1	1	1	1	1	1	1	1	900173	Avalon Lever Sub Assembly	◆	
B					1	1	1	1					900020	Dane Lever Sub Assembly	◆	
C					1	1	1	1					900175	Sutro Lever Sub Assembly	◆	
D													900443	Quantum Lever Sub Assembly	◆	
E									1	1	1	1	900446	Capri (RHR) Lever Sub Assembly	◆	
F													900445	Capri (LHR) Lever Sub Assembly	◆	
G	1	1	1	1	1	1	1	1	1	1	1	1	900231	Control Housing Sub Assembly	◆	
H	1	1	1	1	1	1	1	1	1	1	1	1	900232	Control Housing Sub Assembly	◆	
I	1	1	1	1	1	1	1	1	1	1	1	1	900236	Retaining Plate Sub Assembly	◆	
J	1	1	1	1	1	1	1	1	1	1	1	1	942670	Actuator Sub Assembly		
K	2	2	2	2	2	2	2	2	2	2	2	2	4583	Plastic End Caps		
L	1	1	1	1	1	1	1	1	1	1	1	1	4268	Locking Plate		
M	3	3	3	3	3	3	3	3	3	3	3	3	709239	3/32" x 3/4" Solid Rivet		
N	4	4	4	4	4	4	4	4	4	4	4	4	4605	Actuator Spring		
O	5	5	5	5	5	5	5	5	5	5	5	5	4265	Actuator Plate		
P	6	6	6	6	6	6	6	6	6	6	6	6	4274	Knob Hub		
Q	7	7	7	7	7	7	7	7	7	7	7	7	4302	Rigid Lever Plate		
R	8	8	8	8	8	8	8	8	8	8	8	8	709149	Flat Washer		
S	9	9	9	9	9	9	9	9	9	9	9	9	709202	Flat Washer		
T	10	10	10	10	10	10	10	10	10	10	10	10	709157	3/8" - 16 ESNA Lock Nut		
U	11	2	2	2	2	2	2	2	2	2	2	2	4270	Hex Stud		
V	12	1	1	1	1	1	1	1	1	1	1	1	3894	Cylinder Nut		
W	13	1	1	1	1	1	1	1	1	1	1	1	4218	Nylon Lever Washer		
X	14	1	1	1	1	1	1	1	1	1	1	1	4275	Spring Stop Plate		
Y	15	1	1	1	1	1	1	1	1	1	1	1	4326	Lever Spring Clip		
Z	16	1	1	1	1	1	1	1	1	1	1	1	4841	Lever Return Spring		
Part Sheet Shown	1												6166	NL Spring		

1. Items marked ◆ specify by finish: MAL, M1 3, SS/26D.

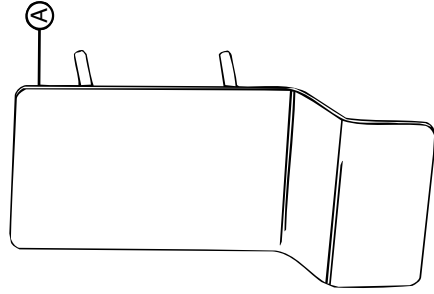
**MONARCH**  
Exit Devices & Door Hardware

Questions? Call: 800-826-5792 / FAX: 800-924-3551  
Monarch Hardware 805 N. Buckman Shepherdsville KY 40165 / Visit us on the Internet at [www.monarchhardware.com](http://www.monarchhardware.com)

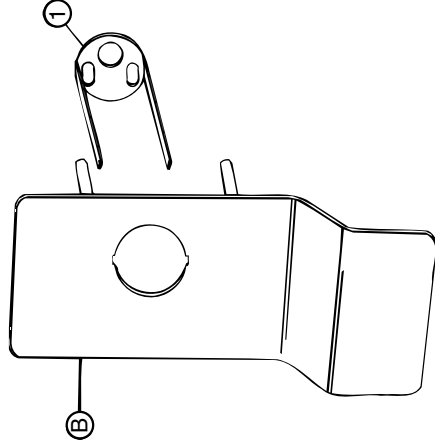


# Trident and Centron Trim 19 Series

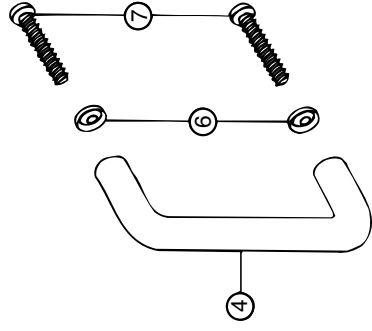
## Trident Trim



**DT 1953**



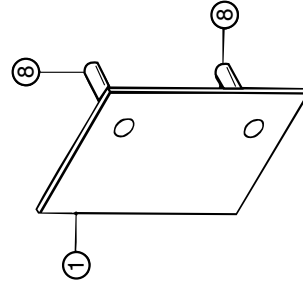
**P 1955**



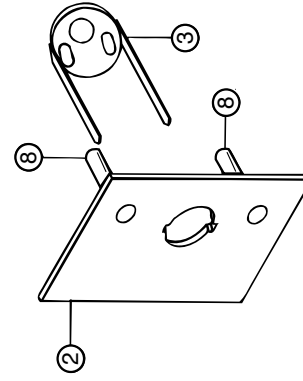
**1904**

(Pull Only)

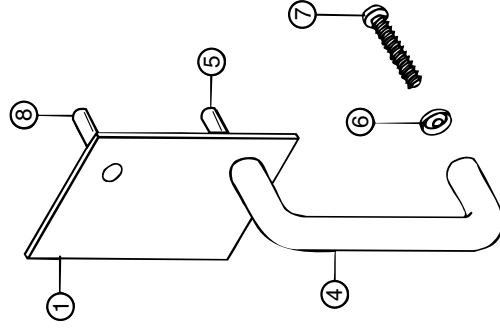
## Centron Trim



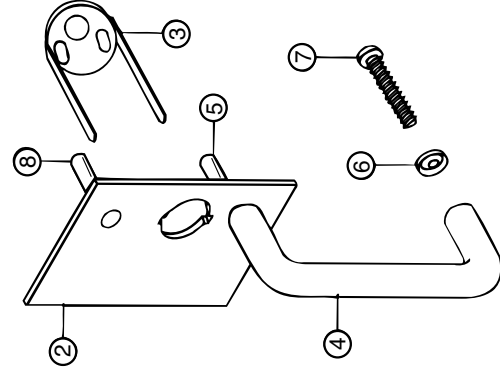
**BE 2301**



**C 2302**



**DT 2303**



**P 2305**

# Trident and Centron Trim, and Cover Plates

## 19 Series

### Trident Trim Parts

Item	Quantity		Part No.	Description	Finish	Remarks
	1953 (RHR)	1955 (LHR)				
A	1		4877	Pull Plate (RHR)	◆	
B		1	4875	Pull Plate (LHR)	◆	
			4876	Pull Plate (RHR)	◆	
		1	4874	Pull Plate (LHR)	◆	
1		1	4873	Cylinder Anchor		

1. Items marked ◆ specify by finish: MAL, M13.

### Centron Trim Parts

Item	Part No.	Description	Finish	Remarks
1	4118	NL (P) 5" Plate	◆	
2	4119	NL (P) 5" Plate w/Cylinder Hole	◆	
3	4873	Cylinder Anchor		
4	4072	Pull Grip	◆	
5	4270	Hex Stud		
6		1/4" CSK Finish Washer	◆	See Note #3
7		1/4" - 20 x 2-1/4" FPHMS	◆	See Note #3
8	4122	1/4" - 20 Sex Bolt	◆	See Note #2

1. Items marked ◆ specify by finish: MAL, M13, SS/26D.

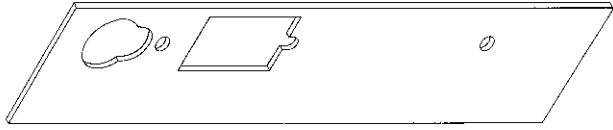
2. Supplied with device in screw pack.

3. Items without part numbers specify by description and finish.

## 19 Series

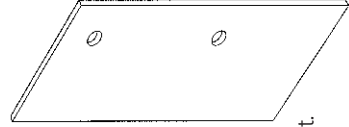
### Cover Plates

Specify by finish: MAL, M13, SS/26D.



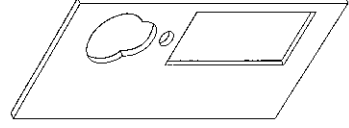
Used with T control and DT control. Covers 161 and 86 cutout.

**4167**



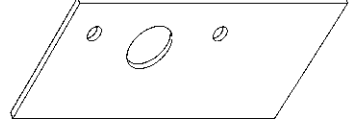
Used with BA device to cover 86 cutout for mortise lock.

**4168**



Used with K control, DT/K control, L control or DT/L control. Covers 161 and 86 cutout.

**4170**



Inside cover plate for type 86 cutout.

**4174**

# Standard Trim 17, 18 and XX Series

Standard Trim – 17 Series

DT (1303) and P (1304)

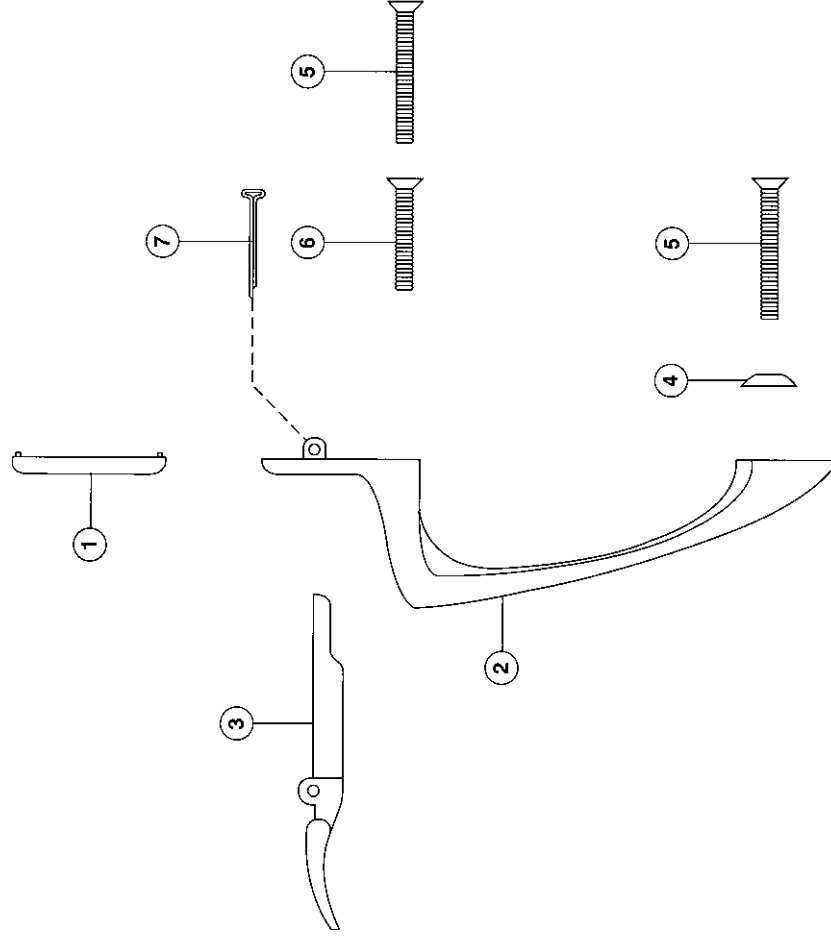
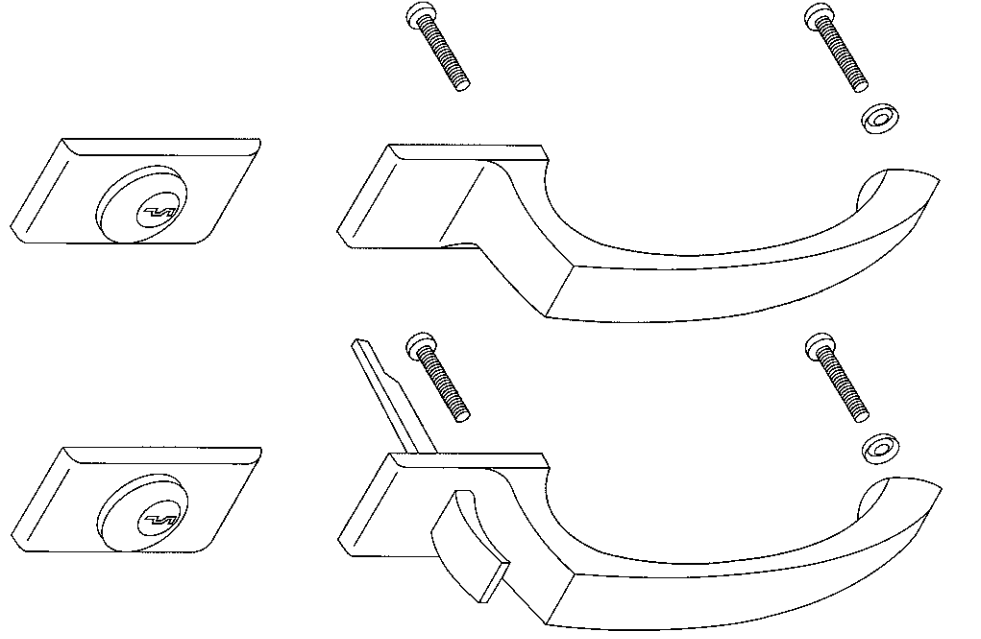
Standard Trim – 18/XX Series

T (1302), DT (1300) and P (1301)

Item	Quantity				Part No.	Description	Finish	Remarks
	1302 T	1300 DT	1301 P	1303 DT				
1	1		1		3577	Cylinder Rose	◆	
2	1				3580	Standard Pull	◆	
3	1	1	1		3579	Standard Pull	◆	
4	1	1	1		3507	Thumbpiece	◆	
5	1	1	1	2		1/4" CSK Finish Washer	◆	See Note #2
6	1	1	1	2		1/4" - 20 x 2-1/4" FPHMS	◆	See Note #2
7	1	1			709002	1/4" - 20 x 2" FPHMS		
					709129	1/8" x 1" Cotter Key		

1. Items marked ◆ specify by finish: US-3, US-4, US-10, US-10B, US-26, and US-26D.

2. Items without part numbers specify by description and finish.



P

T

# Apollo Trim XX and 18 Series

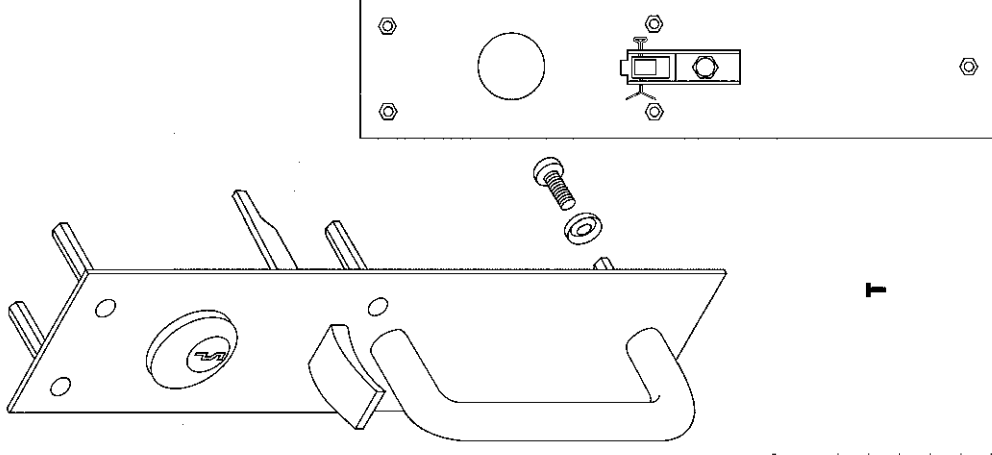
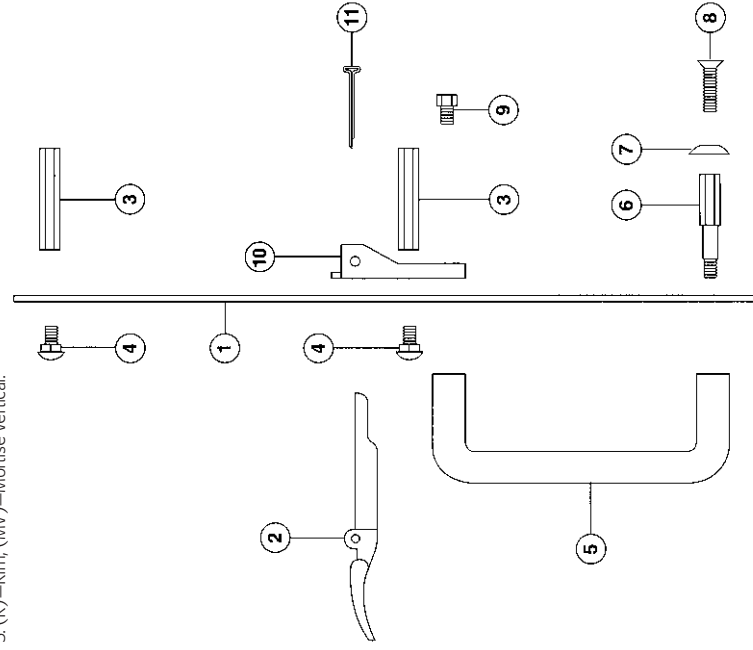
T<sup>(R)</sup> (1446R), T<sup>(MV)</sup> (1446MV),  
T-(LS/LK) (1446LK), DT (1444)  
and P (1445)

Item	T <sup>(R)</sup>	Quantity		P	Part No.	Description	Finish	Remarks
		T-(LS/LK)	DT					
1	1				4041	T Apollo Plate	◆	For Rim Device
		1			4042	T Apollo Plate	◆	For All Devices
	1				4043	T Apollo Plate	◆	For Vert/Mort Device
			1		4038	DT Apollo Plate	◆	
				1	4040	P Apollo Plate	◆	
2	1	1			3507	Thumbpiece	◆	
3	4	4	4	4	4027	Hex Extension		
4	4	4	4	4		# 10 - 24 x 1/2" Carriage Bolt	◆	See Note #2
5	1	1	1	1	4072	Apollo Pull	◆	
6	1	1	1	1	4270	Hex Stud		
7	1	1	1	1		1/4" CSK Finish Washer	◆	See Note #2
8	1	1	1	1		1/4" - 20 x 3/4" FPHMS	◆	See Note #2
9	1	1	1	1	709065	1/4" - 20 x 1/4" Hex Head MS		
10	1	1			4004	Thumbpiece Bracket		
11	1	1			709129	1/8" x 1" Cotter Key		

1. Items marked ◆ specify by finish. US-3, US-4, S-10, US-10B, US-26, US-26D, US-32 and US-32D.

2. Items without part numbers specify by description and finish.

3. (R) = Rim, (MV) = Mortise Vertical.



## Model Information Chart

Trim	Model No.	Application
T <sup>(R)</sup> Apollo	1446R	XX/18-R
T <sup>(MV)</sup> Apollo	1446MV	XX/18-M, XX/18-V
T-(LS/LK)	1446LK	XX/18-R, XX/18-M, XX/18-V
DT Apollo	1445	All Devices
P Apollo	1444	XX/18-R, XX/18-M

# Vanguard Trim XX and 18 Series

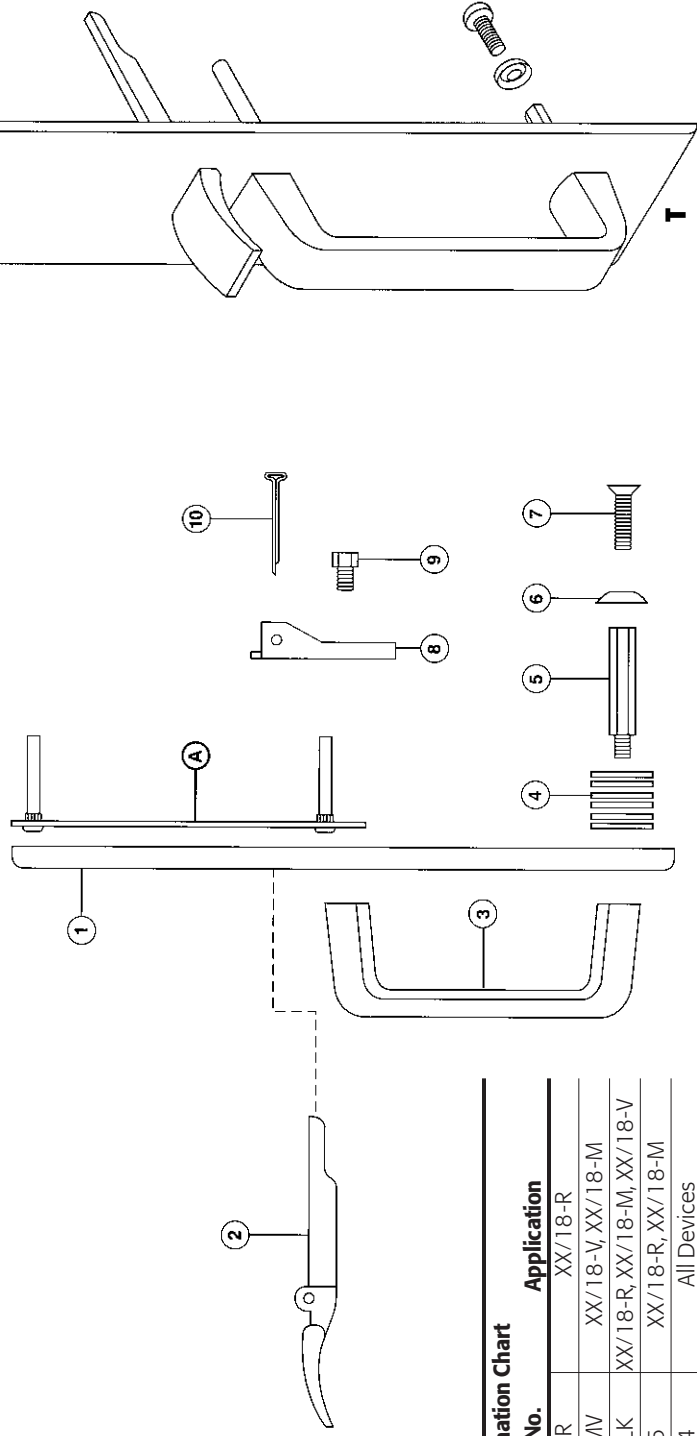
T<sup>(R)</sup> (1346R), T<sup>(MV)</sup> (1346MV),  
T-(LS/LK) (1346LK), DT (1344)  
and P (1345)

Item	Quantity				Description	Part No.	Finish	Remarks
	T <sup>(R)</sup>	T <sup>(MV)</sup>	P	T-(LS/LK)   DT				
A	1	1	1	1	Vanguard Trim Back Plate Assembly	V111	◆	
					T Vanguard Cover Plate (all Devices)	3820	◆	
1	1				T Vanguard Cover Plate (R)	3822	◆	
					T Vanguard Cover Plate (MV)	3825	◆	
		1			P Vanguard Cover Plate	3824	◆	
2	1	1		1	DT Vanguard Cover Plate	3823	◆	
3	1	1		1	Thumbpiece	3507	◆	
4	6	6		6	Vanguard Pull	3638	◆	
5	1	1		1	Flat Washer	709064		
6	1	1		1	Hex Stud	4026	◆	See Note #2
7	1	1		1	1/4" CSK Finish Washer		◆	See Note #2
8	1	1		1	1/4" - 20 x 3/4" FPHMS	4004		
9	1	1		1	Thumbpiece Bracket	709065		
10	1	1		1	1/4" - 20 x 1/4" Hex Head MS	709129		

1. Items marked ◆ specify by finish: US-3, US-4, US-10, US-10B, US-26, US-26D, US-32 and US-32D.

2. Items without part numbers specify by description and finish.

3. (R)=Rim, (MV)=Mortise Vertical.



### Model Information Chart

Trim	Model No.	Application
T <sup>(R)</sup> Vanguard	1346R	XX/18-R
T <sup>(MV)</sup> Vanguard	1346MV	XX/18-V, XX/18-M
T-(LS/LK) Vanguard	1346LK	XX/18-R, XX/18-M, XX/18-V
P Vanguard	1345	XX/18-R, XX/18-M
DT Vanguard	1344	All Devices

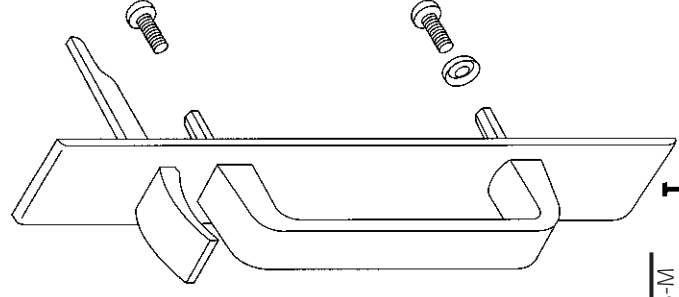
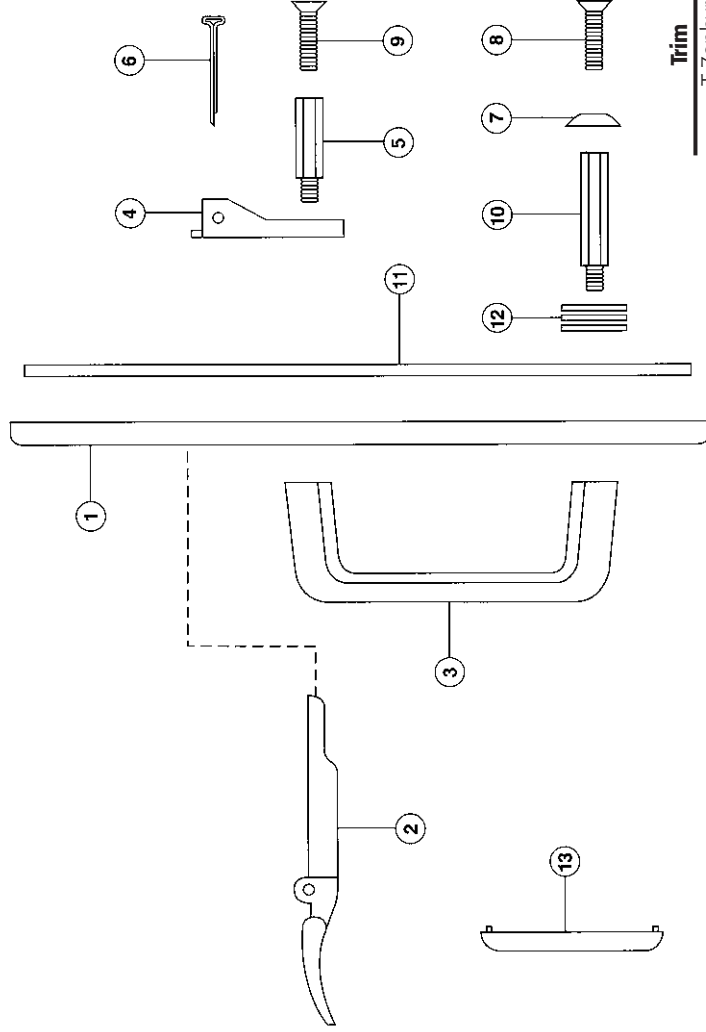
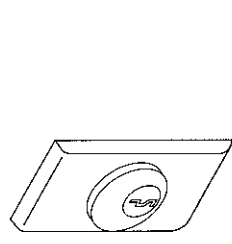
# Zephyr Trim

# XX, 18 and 17 Series

T (1312), DT (1310) and P (1311)

Item	Quantity		Description	Part No.	Finish	Remarks
	T	P				
1	1	1	Trim Cover Plate (T)	4436	◆	
2	1	1	Trim Cover Plate (P/DT)	4437	◆	
3	1	1	Thumbpiece	3507	◆	
4	1	1	Pull Grip	3638		
5	1	1	Thumbpiece Bracket	4004		
6	1	1	Hex Stud	4177		
7	1	1	1/8" x 1" Cotter Key	709129	◆	See Note #2
8	1	1	1/4" CSK Finish Washer		◆	See Note #2
9	1	1	1/4" - 20 x 3/4" FPHMS	709032		
10	1	1	1/4" - 20 x 1-1/4" FPHMS			
11	1	1	Hex Stud	4026		
12	3	3	Trim Back Plate	3578		
13	1	1	Flat Washer	709064		
13	1	1	Cylinder Rose	3577	◆	

1. Items marked ◆ specify by finish: US-3, US-4, S-10, US-10B, US-26, US-26D, US-32 and US-32D.  
 2. Items without part numbers specify by description and finish.



### Model Information Chart

Trim	Model No.	Application
T Zephyr	1312	XX/18-R, XX/18-V, XX/18-M
P Zephyr	1311	XX/18-R, XX/18-V, XX/17/18-M
DT Zephyr	1310	All Devices

# Knob Trim XX and 18 Series

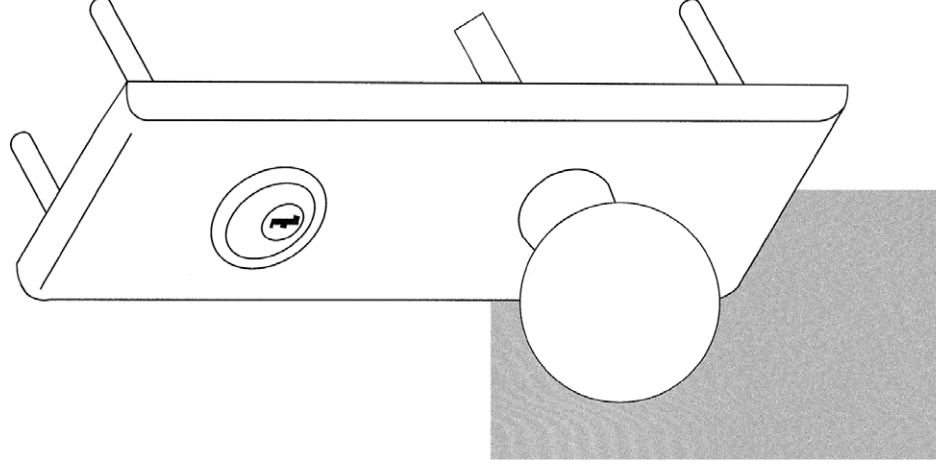
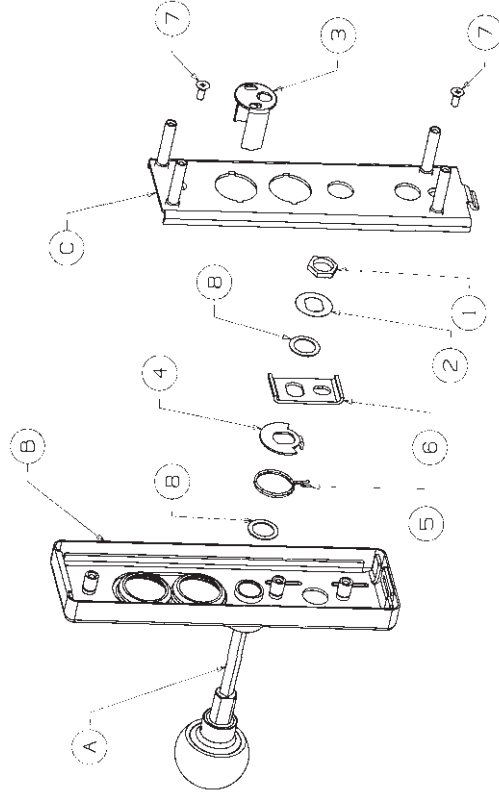
K, K (LS/LK) and K-DT

Item	K <sup>(R)</sup>	Quantity			Part No.	Description	Finish
		K (LS/LK) <sup>(R)</sup>	K <sup>(MV)</sup>	K <sup>(MV)</sup> (LS/LK) <sup>(MV)</sup>			
A	1				900527	K Knob Assembly (DT)	◆
A	1	1			901362	K Knob Assembly	◆
B	1				901336	Trim Escutcheon Sub Assembly	◆
B	1				901337	Trim Escutcheon Sub Assembly	◆
B	1				901338	Trim Escutcheon Sub Assembly	◆
B	1				900339	Trim Escutcheon Sub Assembly	◆
C	1	1	1	1	901375	Backplate Assembly	
1	1	1	1	1	4280	Lever Nut	
2	1	1	1	1	4497	Lever Lock Washer	
3	1				4873	Cylinder Anchor	
4	1	1	1		6116	Spring Plate	
5	1	1	1		6118	K Return Spring	
6	1				6428	Rigid Lever Plate	
7	2	2	2	2	709562	#10-24 x 3/8" UFPHMS	
8	2	2	2	2	709564	Nylon Washer	

1. Items marked ◆ specify by finish: US-3, US-4, US-10, US-10B, US-26, US-26D, US-32 and US-32D.

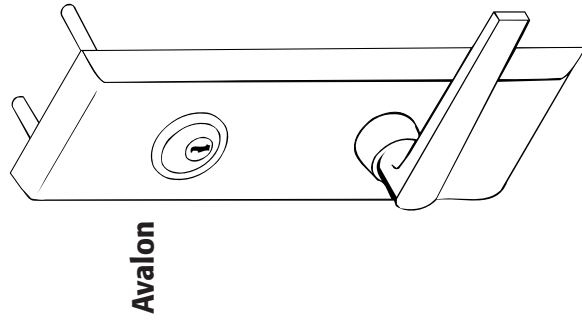
2. Items without part numbers specify by description and finish.

3. (R)=Rim, (MV)=Mortise Vertical.

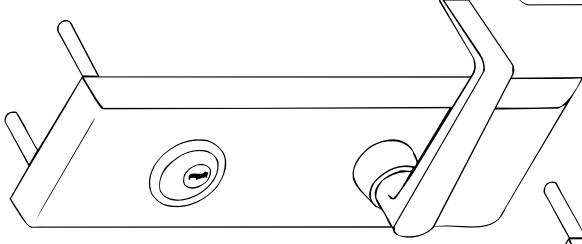


Trim Model No.			Application
K	K (LS/LK)	K-DT	
1811R	1812R	1810R	18-R/XX-R
1811MV	1812MV	1810MV	18-V/XX-V 18-M/XX-M 18-TPL/XX-TPL

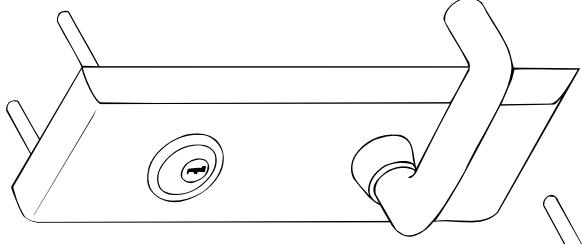
Lever Trim  
**XX and 18 Series**  
 L, L-(LS/LK) and L-DT



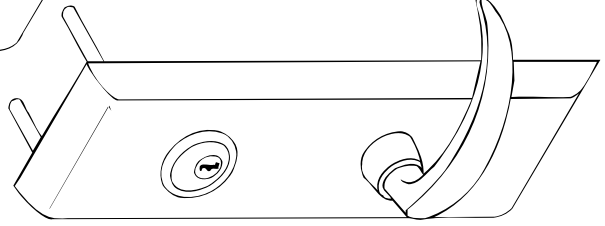
**Avalon**



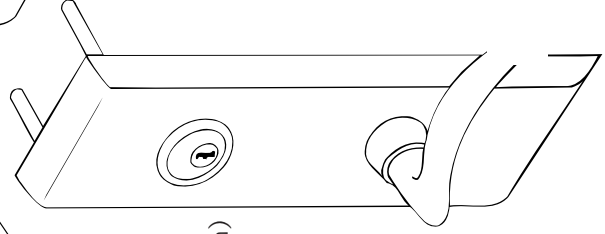
**Dane**



**Sutro**



**Quantum**



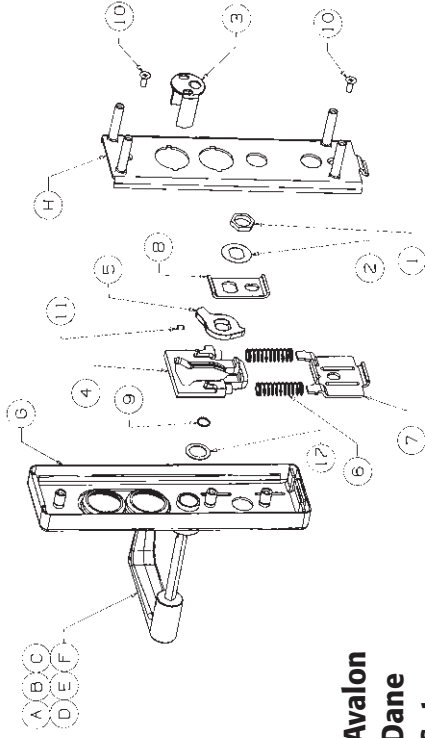
**Capri**  
 (RHR Shown)



# Lever Trim Parts List

## XX and 18 Series

L, L (LS/LK) and L-DT



**Avalon**  
**Dane**  
**Sutro**  
**Quantum**  
**Capri (RHR)**  
**Capri (LHR)**

**Model Information Chart**

Avalon L	Dane L	Sutro L	Quantum L	Capri L (RHR)	Capri L (LHR)	Application
1851R	1821R	1830R	1841R	1891R	1896R	18/XX-R
1851MV	1821MV	1830MV	1841MV	1891MV	1896MV	18/XX-R-M/V/TPL
Avalon L-DT	Dane L-DT	Sutro L-DT	Quantum L-DT	Capri L-DT (RHR)	Capri L-DT (LHR)	Application
1850R	1820R	1831R	1840R	1890R	1895R	18/XX-R
1850MV	1820MV	1831MV	1840MV	1890MV	1895MV	18/XX-R-M/V/TPL
Avalon L (LS/LK)	Dane L (LS/LK)	Sutro L (LS/LK)	Quantum L (LS/LK)	Capri L (RHR) (LS/LK)	Capri L (LHR) (LS/LK)	Application
1852R	1822R	1832R	1842R	1892R	1897R	18/XX-R
1852MV	1822MV	1832MV	1842MV	1892MV	1897MV	18/XX-R-M/V/TPL

Item	Avalon		Dane		Quantum		Sutro		Capri (RHR)		Capri (LHR)		Part No.	Description	Finish	Remarks
	L	L-(LS/LK)	L	L-(LS/LK)	L	L-(LS/LK)	L	L-(LS/LK)	L	L-(LS/LK)	L	L-(LS/LK)				
A	1		1										901346	Dane Lever Sub Assembly	◆	
B					1		1						901345	Dane Lever Sub Assembly (DT)	◆	
C	1							1					901352	Sutro Lever Sub Assembly	◆	
D													901351	Sutro Lever Sub Assembly (DT)	◆	
E													901349	Avalon Lever Sub Assembly	◆	
F													901348	Avalon Lever Sub Assembly (DT)	◆	
G	1												901355	Quantum Lever Sub Assembly	◆	
H	1												901354	Quantum Lever Sub Assembly (DT)	◆	
I	1												901358	Capri (RHR) Lever Sub Assembly	◆	
J	1												901357	Capri (RHR) Lever Sub Assembly (DT)	◆	
K	1												901361	Capri (LHR) Lever Sub Assembly	◆	
L	1												901360	Capri (LHR) Lever Sub Assembly (DT)	◆	
M	1												901336	Trim Escutcheon Sub Assembly	◆	18/XX-R Only
N	1												901337	Trim Escutcheon Sub Assembly	◆	18/XX-R Only
O	1												901338	Trim Escutcheon Sub Assembly	◆	18/XX-M/V/TPL Only
P	1												901339	Trim Escutcheon Sub Assembly	◆	18/XX-M/V/TPL Only
Q	1												901375	Backplate Assembly	◆	
R	1												4280	Lever Nut		
S	1												4497	Lever Lock Washer		
T	1												4873	Cylinder Anchor		
U	1												6221	Slider		
V	1												6222	Cam		
W	2												6223	Spring		
X	1												6225	V/M trim Stop		
Y	1												6248	Rigid Lever Plate		
Z	1												709560	5100-62 Walides Inuarc Ring		
AA	2												709562	# 10-24x3/8" UFPHMIS		
AB	1												709563	# 8-32x3/8 Set Screw		
AC	1												709564	Nylon Washer		

1. Items marked ◆ specify by finish: US-3, US-4, US-10, US-10B, US-26, US-26D, US-32 and US-32D.

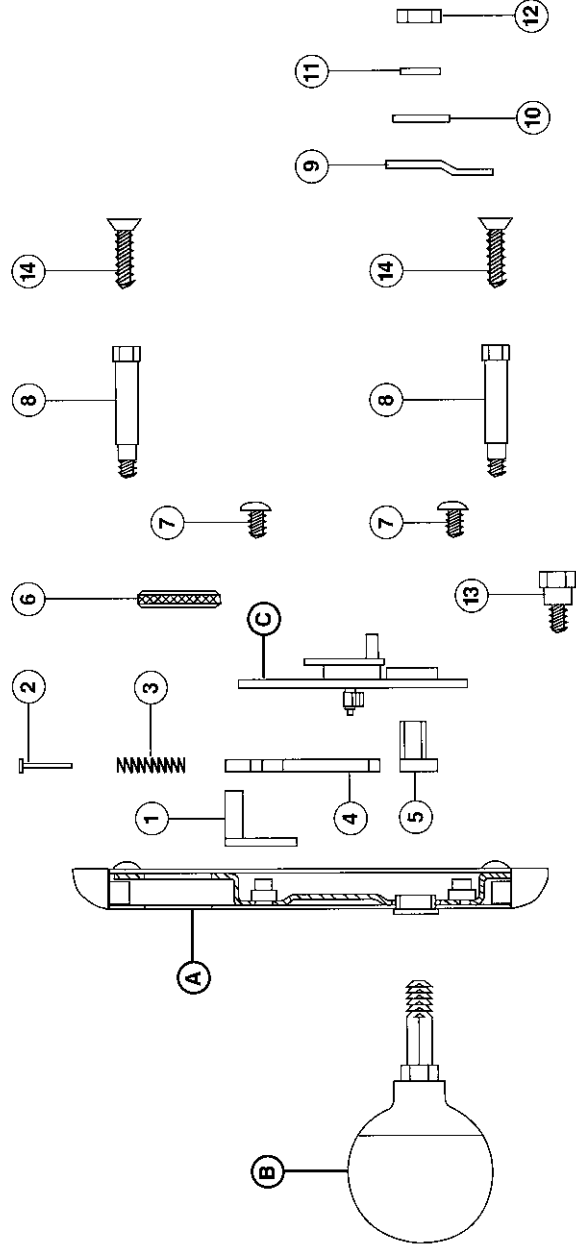
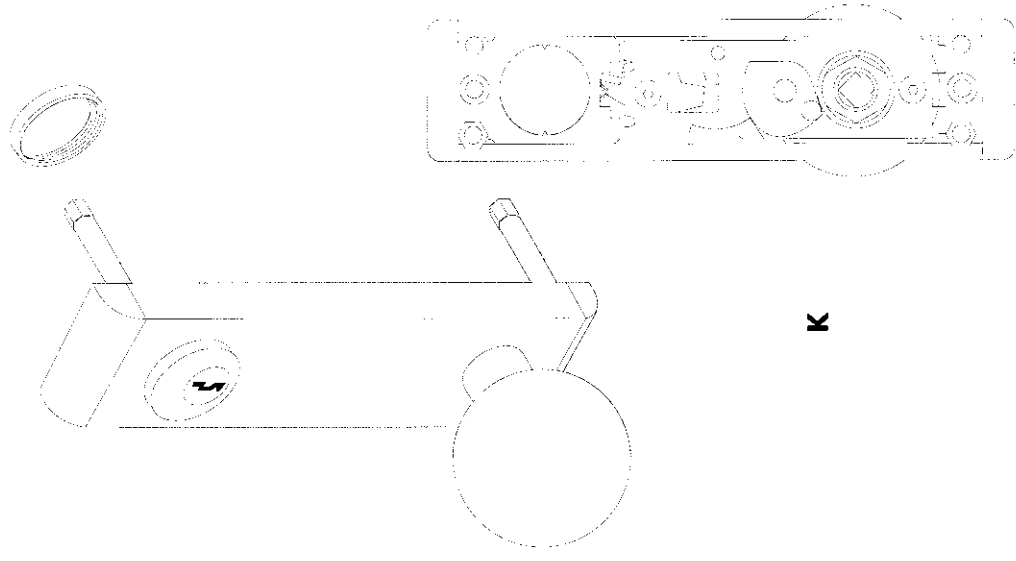
2. Items without part numbers specify by description and finish.

3. (R)=Rim, (MV)=Mortise Vertical.

# Knob Trim- Concealed XX, 18 and 17 Series (Concealed Only) K (1764), K-(LS/LK) (1774), K-NL (1764NL) and K-DT (1784)

Item	Quantity		Part No.	Description	Finish	Remarks
	K	K-(LS/LK)   K-DT				
A	1	1	900229	Housing Sub Assembly	◆	
			900234	Housing Sub Assembly	◆	
B	1	1	900263	Hana Knob Sub Assembly	◆	
C	1	1	900060	Retainer Plate Sub Assembly	◆	
1	1	1	4268	Locking Plate		
2	1	1	709239	3/32" x 3/4" Solid Rivet		
3	1	1	4605	Actuator Spring		
4	1	1	4265	Actuator Plate		
5	1	1	4274	Knob Hub		
6	1	1	3894	Cylinder Nut		
7	2	2	709229	1/4" - 20 x 5/16" Button Head Cap Screw		
8	2	2	4349	Hex Stud		
9		1	4302	Rigid Lever Plate		
10		1	709149	Flat Washer		
11		1	709202	Flat Washer		
12	1	1	709148	3/8" - 16 Hex Jam Nut		
13		1	4354	Stop Post		
14	2	2	709118	1/4" - 20 x 3/4" FPHMS		See Note #2
		1	6166	NL Spring		
Part not shown						

1. Items marked ◆ specify by finish: US-3, US-4, US-10, US-10B, US-108, US-26D, US-32 and US-32D.  
2. Omit item for 17 Series device trim.



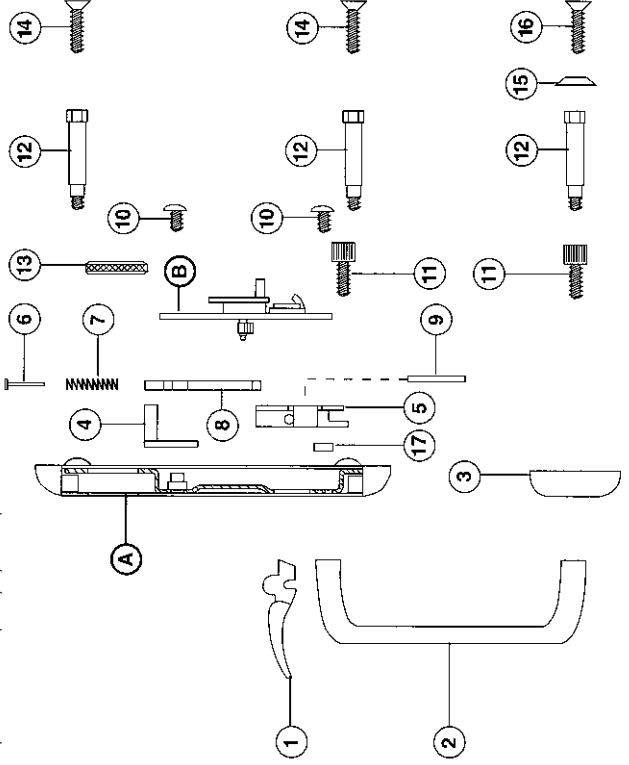
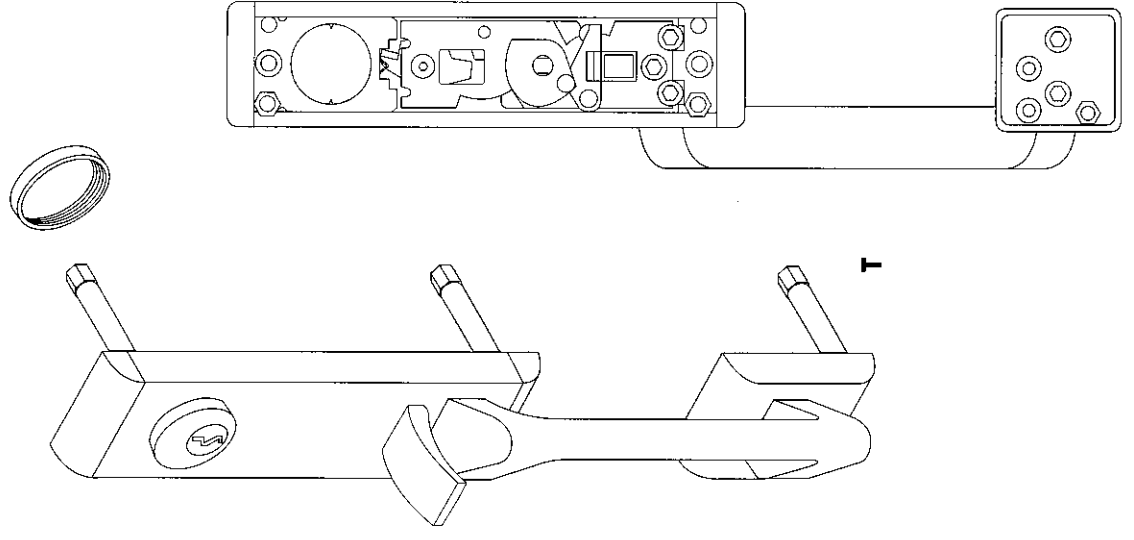
K

# Delta Trim- Concealed XX, 18 and 17 Series (Concealed Only) T (1741), T-(LS/LK) (1742), T-NL (1741NL) and T-DT (1743)

Item	Quantity		Part No.	Description	Finish	Remarks
	T	T-(LS/LK)				
A	1		900400	Housing Sub Assembly (T)	◆	
		1	900401	Housing Sub Assembly (T-(LS/LK))	◆	
		1	900402	Housing Sub Assembly (T-DT)	◆	
B	1		900022	Retainer Plate Sub Assembly		
	1		4602	Thumbpiece	◆	
	1		4377	Pull Grip	◆	
	1		4313	Pull Pad	◆	
	1		4268	Locking Plate		
	1		4603	Thumbpiece Bracket		
	1		709239	3/32" x 3/4" Solid Rivet		
	1		4605	Actuator Spring		
	1		4265	Actuator Plate		
	1		709104	1/8" x 1-1/4" Pin Type "C"		
	2		709229	1/4" - 20 x 5/16" Button Head Cap Screw		
	4		709078	1/4" - 20 x 1/2" Hex Cap Screw		
	3		4349	Hex Stud		
	1		3894	Cylinder Nut		
	2		709118	1/4" - 20 x 3/4" FPHMS	◆	See Note #2
	1			1/4" CSK Finish Washer	◆	See Note #3
	1			1/4" - 20 x 3/4" FPHMS	◆	See Note #3
	1		709254	1/4" Square Nut		
	1		6166	NL Spring		

Part not shown.

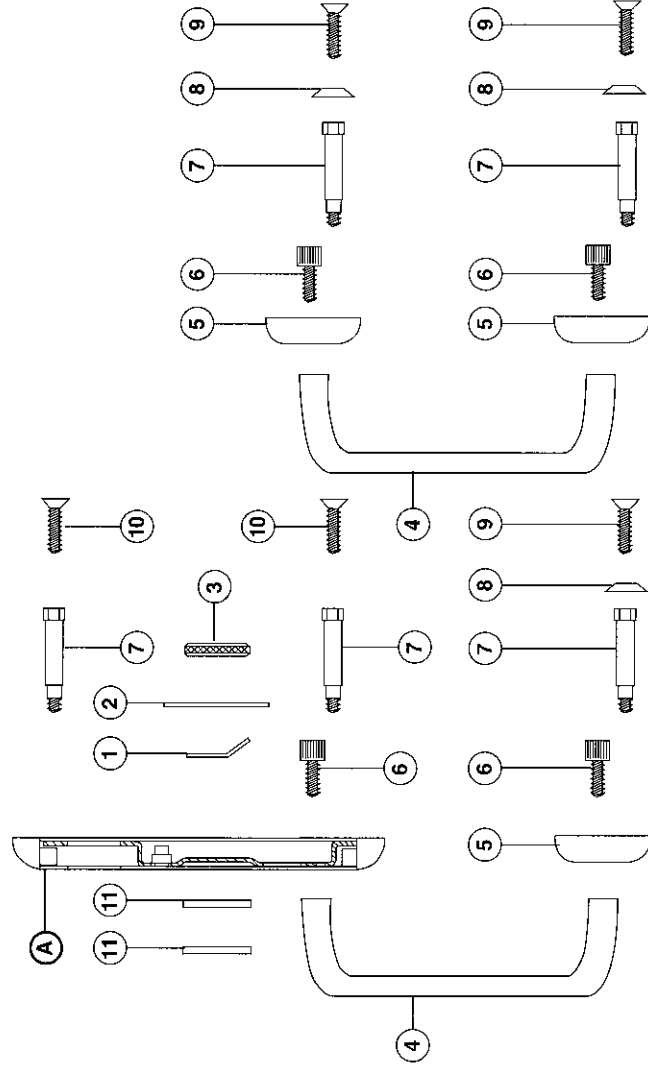
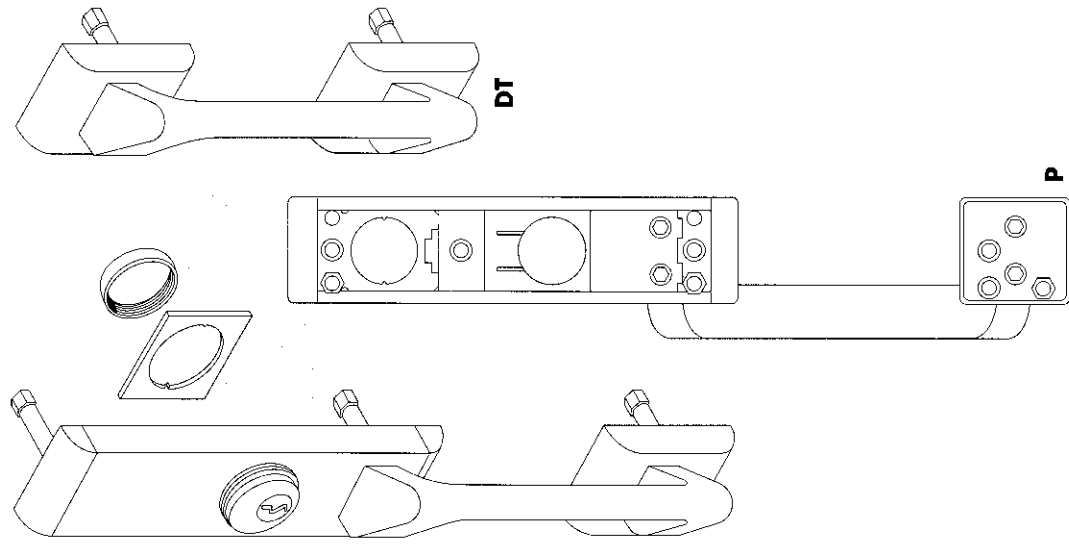
1. Items marked ◆ specify by finish: US-3, US-4, US-10, US-10B, US-26, US-26D, US-32 and US-32D.  
2. Omit item for 17 Series device trim.  
3. Items without part numbers specify by description and finish.



# Delta Trim- Concealed XX, 18 and 17 Series (Concealed Only) C (1713), DT (1760) and P (1740)

Item	Quantity		Part No.	Description	Finish	Remarks
	C	DT				
A	1		900452	Housing Sub Assembly	◆	
		1	900453	Housing Sub Assembly	◆	
1	1	1	4831	Special Cam (Mortise Cylinder)		
2	1	1	4131	Cylinder Retaining Plate		
3	1	1	3894	Cylinder Nut		
4	1	1	4377	Pull Grip	◆	
5	2	1	4313	Pull Pad	◆	
6	4	4	709078	1/4" - 20 x 1/2" Hex Cap Screws		
7	2	3	4349	Hex Stud		
8	2	1		1/4" CSK Finish Washer	◆	See Note #2
9	2	1		1/4" - 20 x 3/4" FPHMS	◆	See Note #2
10	2	2	709188	1/4" - 20 x 3/4" FPHMS		See Note #3
11	2	2	3917	Cylinder Spacer	◆	

1. Items marked ◆ specify by finish: US-3; US-4; US-10; US-10B; US-26; US-26D; US-32 and US-32D.  
2. Items without part numbers specify by description and finish.  
3. Omit item for 17 Series device trim.



# Delta Trim- Concealed

## XX, 18 and 17 Series (Concealed Only)

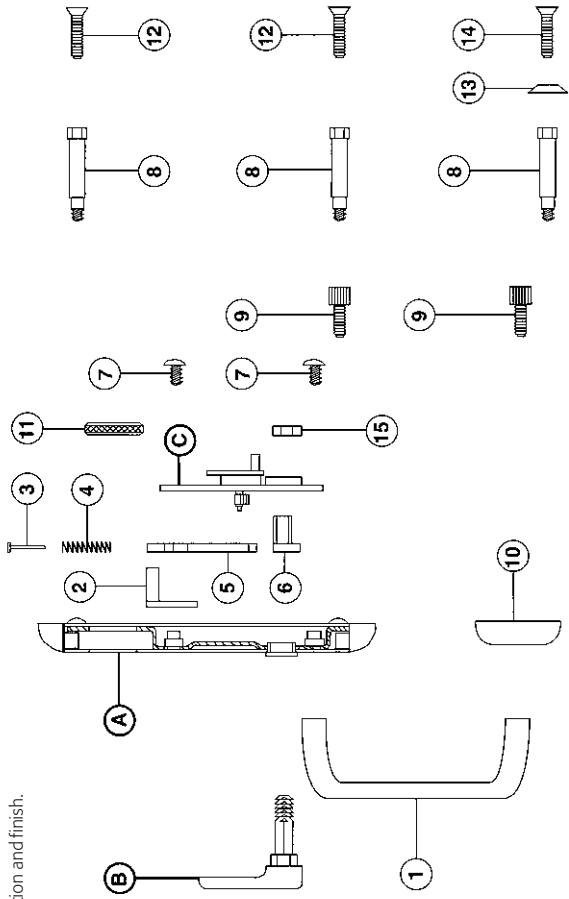
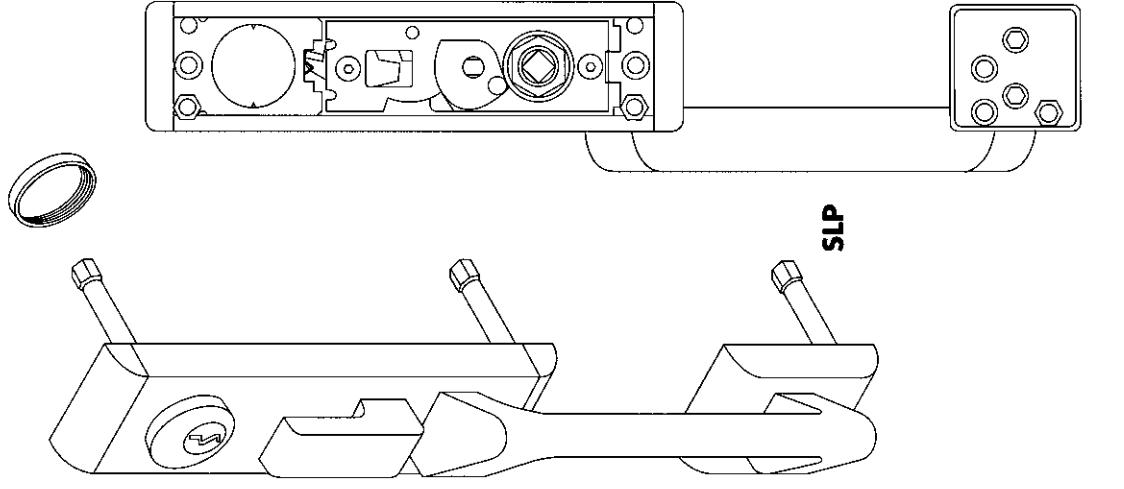
SL (1738), SL-(LS/LK) (1718), SLP (1728),  
SL-NL (1738NL), SLP-NL (1728NL) and SLP-(LS/LK) (1708)

Item	Quantity				Description	Finish	Remarks
	SL	SL-NL	SLP	SLP-NL			
A	1	1			Housing Sub Assembly	◆	
			1		Housing Sub Assembly	◆	
			1	1	Housing Sub Assembly	◆	
			1	1	Housing Sub Assembly	◆	
B	1	1	1	1	SL Sub Assembly	◆	
C	1	1	1	1	Retainer Plate Sub Assembly		
1	1	1	1	1	Pull Grip	◆	
2	1	1	1	1	Locking Plate		
3	1	1	1	1	3/32" x 3/4" Solid Rivet		
4	1	1	1	1	Actuator Plate		
5	1	1	1	1	Actuator Plate		
6	1	1	1	1	Knob Hub		
7	2	2	2	2	1/4" - 20 x 5/16" Button Head Cap Screw		
8	2	2	3	3	Hex Stud		
9			4	4	1/4" - 20 x 1/2" Hex Cap Screw		
10			1	1	Pull Pad	◆	
11	1	1	1	1	Cylinder Nut		
12	2	2	2	2	1/4" - 20 x 3/4" FPHMS		See Note #2
13			1	1	1/4" CSK Finish Washer	◆	See Note #3
14			1	1	1/4" - 20 x 3/4" FPHMS	◆	See Note #3
15	1	1	1	1	3/8" - 16 Hex Jam Nut		
Part not Shown			1	1	6116 NL Spring		

1. Items marked ◆ specify by finish; US-3, US-4, US-10, US-10B, US-26, US-26D, US-32 and US-32D.

2. Omit item for 17 Series device trim.

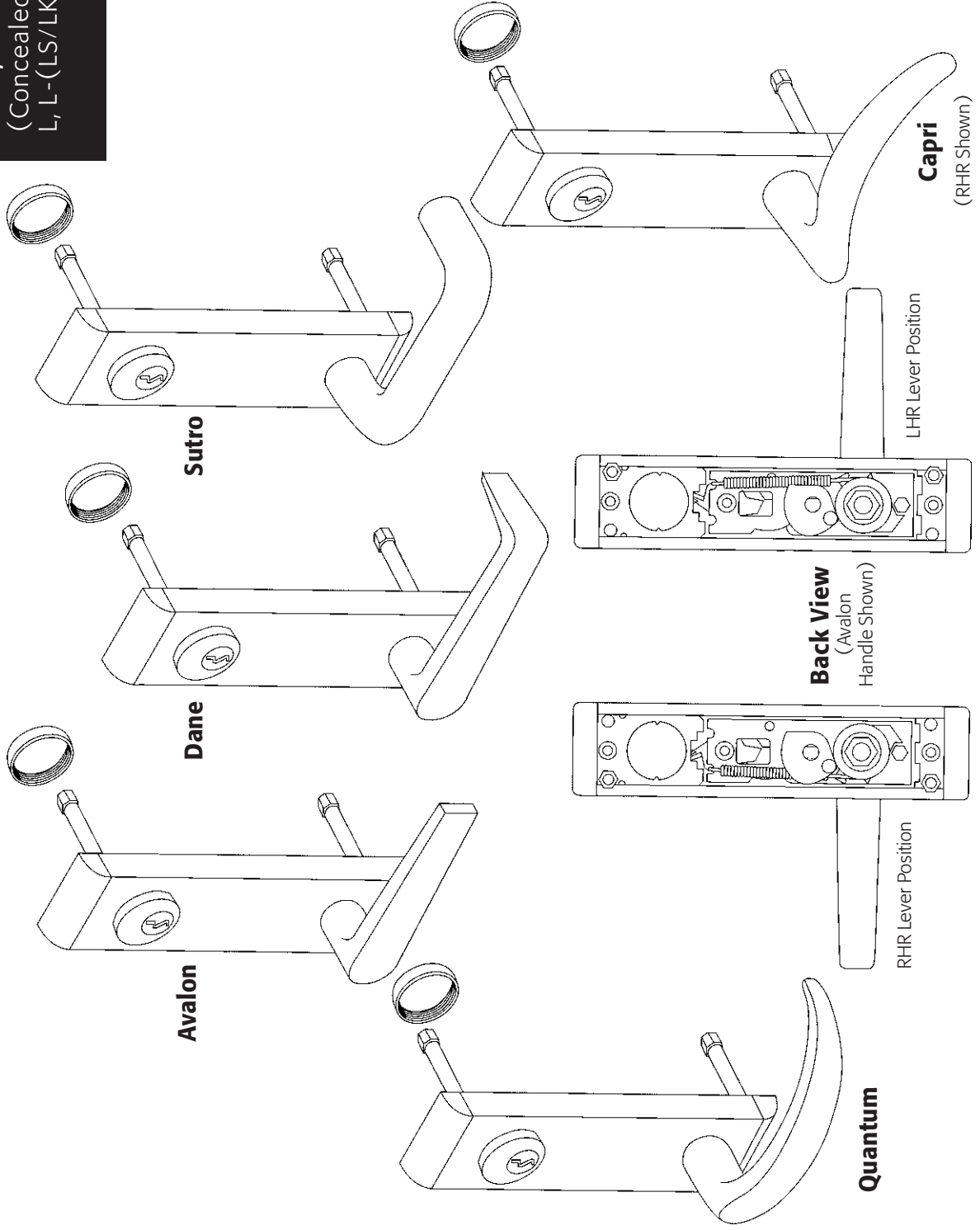
3. Items without part numbers specify by description and finish.



**Lever Trim- Concealed**

**XX, 18 and 17 Series**

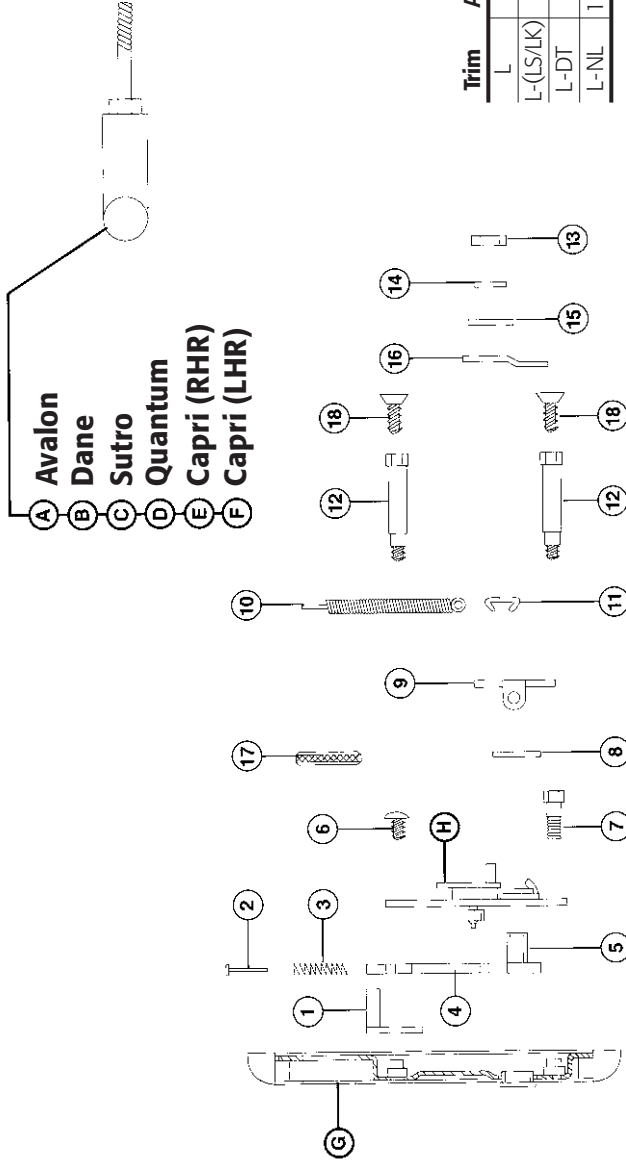
(Concealed Only)  
L, L-(LS/LK), L-NL and L-DT



# Lever Trim- Concealed

# XX, 18 and 17 Series

L & L-NL, L-(LS/LK) and L-DT



Model Information Chart

Trim	Avalon	Dane	Sutro	Quantum	Capri (RHR)	Capri (LHR)
L	1765	1766	1767	1768	1861	1862
L-(LS/LK)	1775	1776	1777	1778	1871	1872
L-DT	1785	1786	1787	1788	1881	1882
L-NL	1765NL	1766NL	1767NL	1768NL	1861NL	1862NL

Item	Avalon		Dane		Sutro		Quantum		Capri (RHR)		Capri (LHR)		Part No.	Description	Finish	Remarks
	L	L-NL	L	L-NL	L	L-NL	L	L-NL	L	L-NL	L	L-NL				
A	1	1											900267	Avalon Lever Sub Assembly	◆	
B													900270	Dane Lever Sub Assembly	◆	
C													900273	Sutro Lever Sub Assembly	◆	
D													900443	Quantum Lever Sub Assembly	◆	
E													900446	Capri (RHR) Lever Sub Assembly	◆	
F													900445	Capri (LHR) Lever Sub Assembly	◆	
G	1	1											900229	Housing sub Assembly	◆	
H													900234	Housing Sub Assembly	◆	
													900060	Retainer Plate Sub Assembly	◆	
													900236	Retainer Plate Sub Assembly	◆	
1	1	1											4268	Locking Plate		
2	1	1											709239	3/32" x 3/4" Solid Rivet		
3	1	1											4605	Actuator Spring		
4	1	1											4265	Actuator Plate		
5	1	1											4274	Knob Hub		
6	1	1											709229	1/4" - 20 x 5/16" Button Head Cap Screw		
7	1	1											4354	Stop Post		
8	1	1											4218	Nylon Lever Washer		
9	1	1											4408	Spring Stop Plate		
10	1	1											4841	Lever Return Spring		
11	1	1											4326	Lever Spring Clip		
12	2	2											4349	Hex Stud		
13	1	1											709148	3/8" - 16 Hex Jam Nut		
14	1	1											709202	Flat Washer		
15	1	1											709149	Flat Washer		
16	1	1											4302	Rigid Lever Plate		
17	1	1											3894	Cylinder Nut		
18	2	2											709118	1/4" x 20 x 3/4" FPHMS		See Note #2
Part not shown	1	1											6116	NL Spring		

1. Items marked ◆ specify by finish; US-3, US-4, US-10, US-10B, US-26, US-26D, US-32 and US-32D.

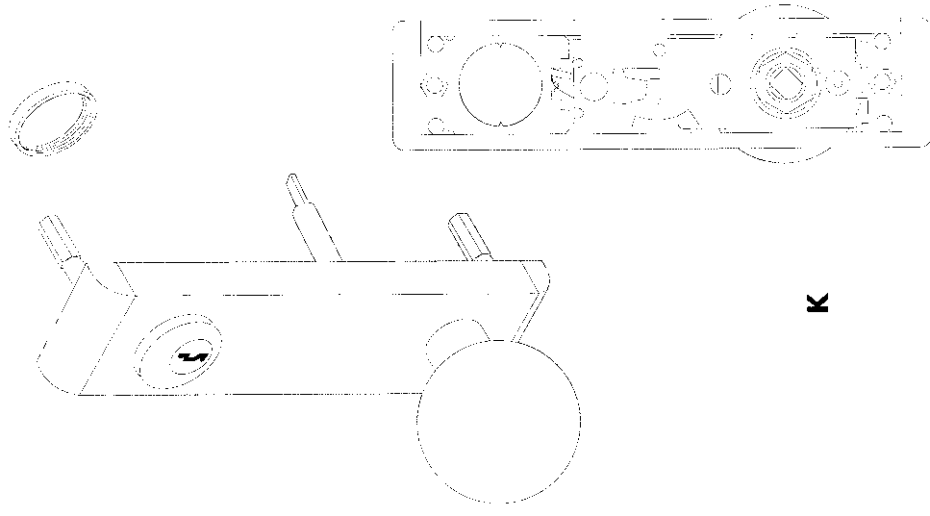
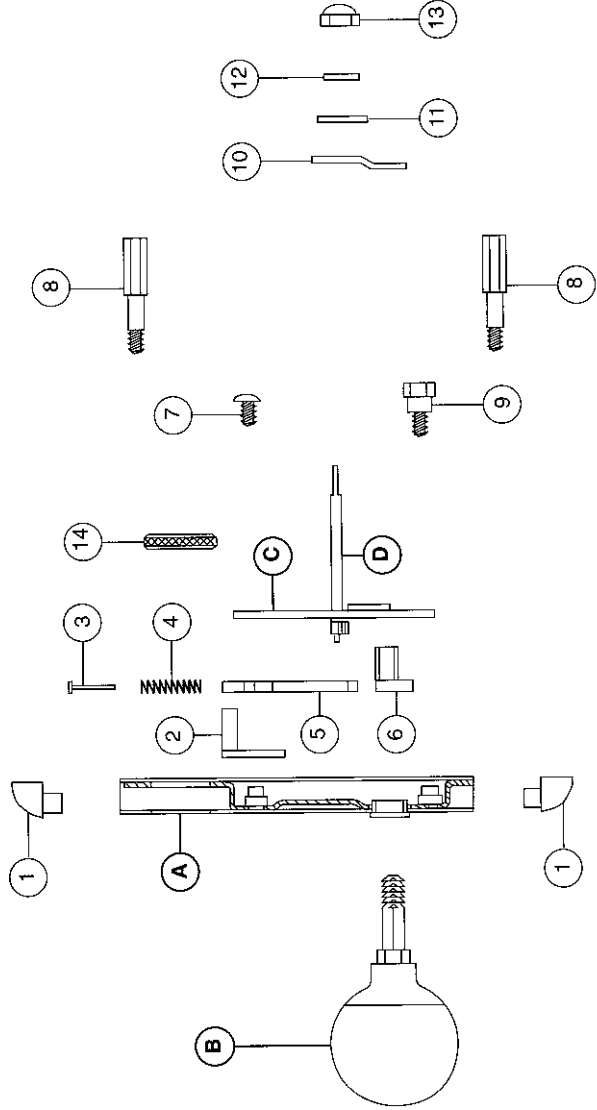
2. Omit item for 17 Series device trim.

# Control Trim 17 Series

K, K-(LS/LK), K-NL and K-DT

Item	Quantity		Part No.	Description	Finish
	K	K-NL (LS/LK) K-DT			
A	1		900406	Housing Sub Assembly	◆
B	1	1	900407	Housing Sub Assembly	◆
C	1	1	900263	Hana Knob Sub Assembly	◆
D	1	1	900236	Retainer Plate Sub Assembly	
	1	1	943250	Actuator Shaft Sub Assembly	
1	2	2	4582	Forged End Caps	◆
2	1	1	4268	Locking Plate	
3	1	1	709239	3/32" x 3/4" Solid Rivet	
4	1	1	4605	Actuator Spring	
5	1	1	4265	Actuator Plate	
6	1	1	4274	Knob Hub	
7	2	2	709229	1/4" - 20 x 5/16" Button Head Cap Screw	
8	2	2	4270	Hex Stud	
9		1	4354	Stop Post	
10		1	4302	Rigid Lever Plate	
11		1	709149	Flat Washer	
12		1	709202	Flat Washer	
13	1	1	709157	3/8" - 16 ESNA Lock Nut	
14	1	1	3894	Cylinder Nut	
Part not shown		1	6116	NL Spring	

1. Items marked ◆ specify by finish: US-3, US-4, US-10, US-10B, US-10, US-26D, US-26, US-32 and US-32D.



**K**

Trim Model No.	K	K-NL	K-(LS/LK)	K-DT	Application
1604	1	1	1	1	1604 1614 1624 17-R, 17-V

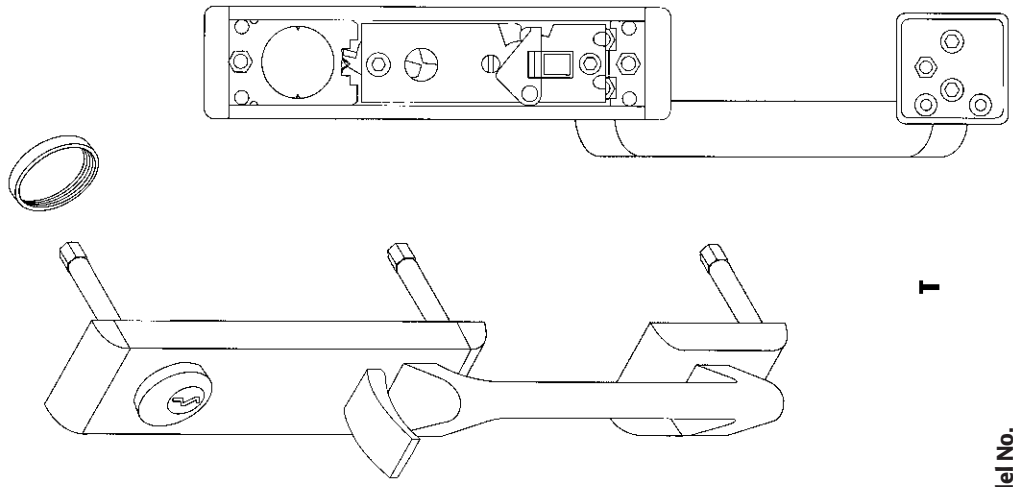
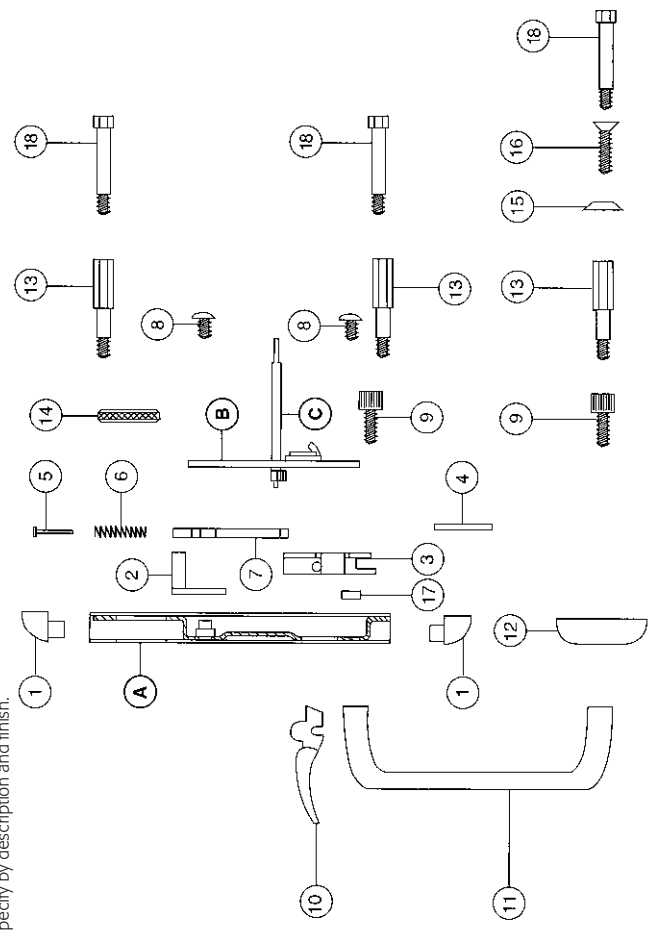


# Delta Trim 17 Series

T, T-NL, T-(LS/LK) and T-DT

Item	Quantity			Part No.	Description	Finish	Remarks
	T	T-NL	T-(LS/LK)				
A	1	1		900413	Housing Sub Assembly	◆	
			1	900414	Housing Sub Assembly	◆	
			1	900415	Housing Sub Assembly	◆	
B	1	1		900235	Retainer Plate Sub Assembly		
C	1	1		943250	Actuator Shaft Sub Assembly		
1	2	2	2	4582	Forged End Caps	◆	
2	1	1		4268	Locking Plate		
3	1	1	1	4603	Thumbpiece Bracket		
4	1	1	1	709104	1/8" x 1-1/4" Pin Type "C"		
5	1	1	1	709239	3/32" x 3/4" Solid Rivet		
6	1	1	1	4605	Actuator Spring		
7	1	1	1	4265	Actuator Plate		
8	2	2	2	709229	1/4" - 20 x 5/16" Button Head Cap Screw		
9	4	4	4	709078	1/4" - 20 x 1/2" Hex Cap Screw		
10	1	1	1	4602	Thumbpiece	◆	
11	1	1	1	4377	Pull Grip	◆	
12	1	1	1	4313	Pull Pad	◆	
13	3	3	3	4270	Hex Stud		
14	1	1	1	3894	Cylinder Nut		
15	1	1	1		1/4" CSK Finish Washer	◆	See Note # 2
16	1	1	1		1/4" - 20 x 3/4" FPHMS	◆	See Note # 2
17	1	1	1	709254	1/4" Square Nut		
18				4349	Hex Strnd, used on 17-M		
Partnot Shown				6116	NL Spring		

1. Items marked ◆ specify by finish: US-3, US-4, US-10, US-10B, US-26, US-26D, US-32 and US-32D.  
2. Items without part numbers specify by description and finish.

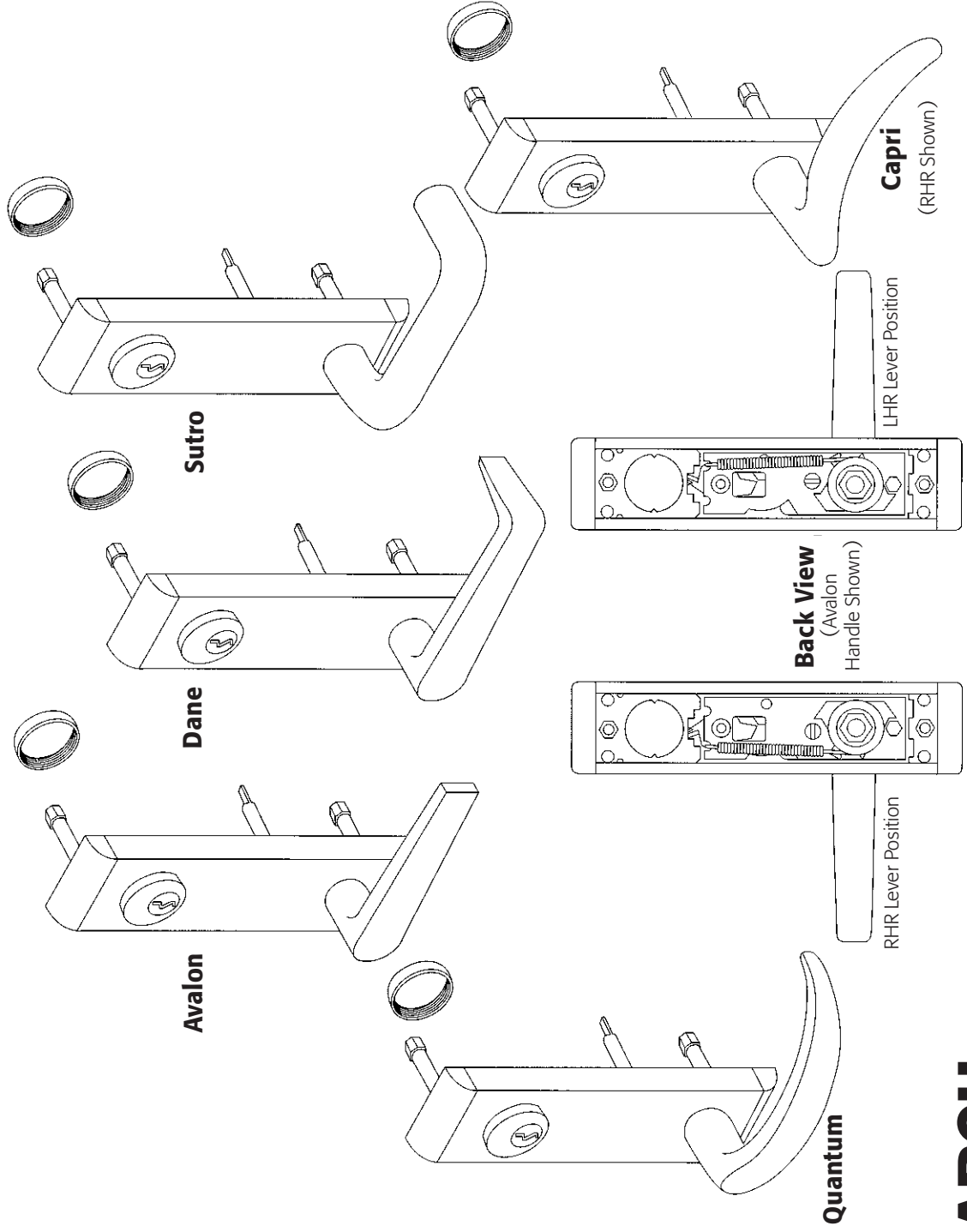


Trim Model No.				
T	T-NL	T-(LS/LK)	T-DT	Application
1602	1602NL	1612	1622RV	17-R, 17-V
-	-	-	1622M	17-M

Lever Control Trim

# 17 Series

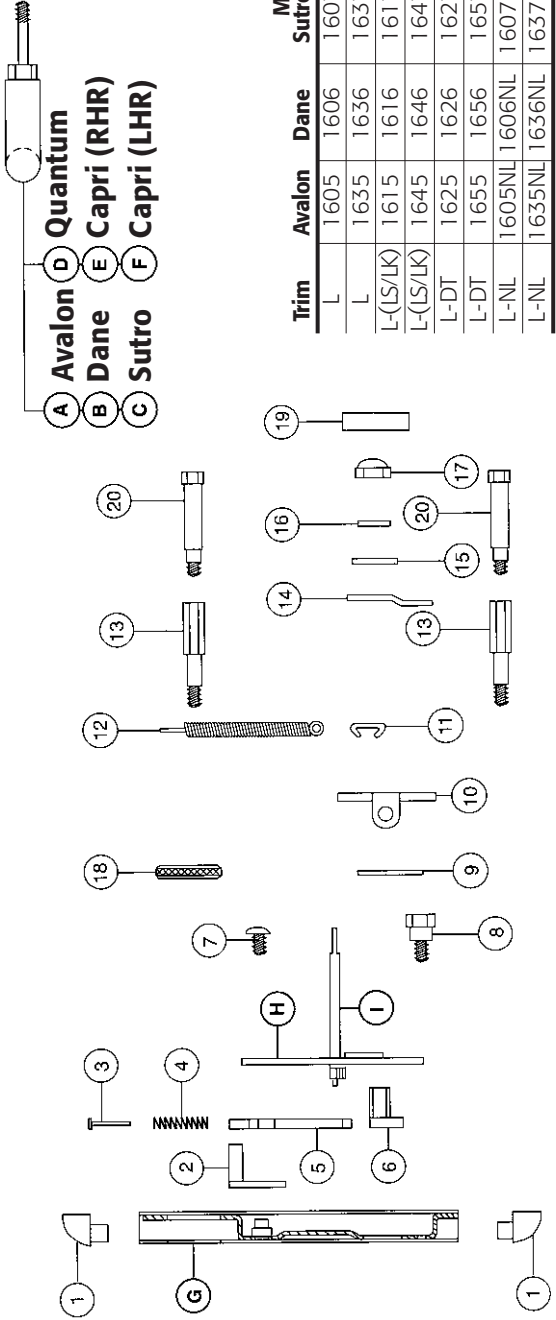
L, L-(LS/LK), L-NL and L-DT



# Lever Trim - Concealed

## 17 Series

L & L-NL, L-(LS/LK) and L-DT



Trim	Model Information Chart				Application
	Avalon	Dane	Sutro	Capri (LHR)	
L	1605	1606	1607	1502	1503
L	1635	1636	1637	1532	1533
L-(LS/LK)	1615	1616	1617	1512	1513
L-(LS/LK)	1645	1646	1647	1542	1543
L-DT	1625	1626	1627	1522	1523
L-DT	1655	1656	1657	1552	1553
L-NL	1605NL	1606NL	1607NL	1502NL	1503NL
L-NL	1635NL	1636NL	1637NL	1532NL	1533NL

Item	Avalon		Dane		Sutro		Quantum		Capri (RHR)		Capri (LHR)		Part No.	Description	Finish	Remarks
	L	L-(LS/LK)	L	L-(LS/LK)	L	L-(LS/LK)	L	L-(LS/LK)	L	L-(LS/LK)	L	L-(LS/LK)				
A	1	1	1	1	1	1	1	1	1	1	1	1	900267	Avalon Lever Sub Assembly	◆	
B													900270	Dane Lever Sub Assembly	◆	
C					1	1	1	1					900273	Sutro Lever Sub Assembly	◆	
D													900443	Quantum Lever Sub Assembly	◆	
E									1	1	1	1	900446	Capri (RHR) Lever Sub Assembly	◆	
F													900445	Capri (LHR) Lever Sub Assembly	◆	
G	1	1	1	1	1	1	1	1	1	1	1	1	900406	Housing Sub Assembly	◆	
H	1	1	1	1	1	1	1	1	1	1	1	1	900407	Housing Sub Assembly	◆	
I	1	1	1	1	1	1	1	1	1	1	1	1	900236	Retainer Plate Sub Assembly	◆	
J	1	1	1	1	1	1	1	1	1	1	1	1	943250	Actuator Shaft Sub Assembly	◆	
K	2	2	2	2	2	2	2	2	2	2	2	2	4582	Forged End Caps	◆	
L	1	1	1	1	1	1	1	1	1	1	1	1	4268	Locking Plate	◆	See Note #4
M	1	1	1	1	1	1	1	1	1	1	1	1	709239	3/32" x 3/4" Solid Rivet	◆	
N	1	1	1	1	1	1	1	1	1	1	1	1	4605	Actuator Spring	◆	
O	1	1	1	1	1	1	1	1	1	1	1	1	4265	Actuator Plate	◆	
P	1	1	1	1	1	1	1	1	1	1	1	1	4274	Knob Hub	◆	
Q	1	1	1	1	1	1	1	1	1	1	1	1	709229	1/4" - 20 x 5/16" Button Head Cap Screw	◆	
R	1	1	1	1	1	1	1	1	1	1	1	1	4354	Stop Post	◆	
S	1	1	1	1	1	1	1	1	1	1	1	1	4218	Nylon Lever Washer	◆	
T	1	1	1	1	1	1	1	1	1	1	1	1	4275	Spring Stop Plate	◆	
U	1	1	1	1	1	1	1	1	1	1	1	1	4326	Lever Spring Clip	◆	
V	1	1	1	1	1	1	1	1	1	1	1	1	4841	Lever Return Spring	◆	See Note #5
W	2	2	2	2	2	2	2	2	2	2	2	2	4270	Hex Stud	◆	
X	1	1	1	1	1	1	1	1	1	1	1	1	4302	Rigid Lever Plate	◆	
Y	1	1	1	1	1	1	1	1	1	1	1	1	709149	Flat Washer	◆	
Z	1	1	1	1	1	1	1	1	1	1	1	1	709202	Flat Washer	◆	
AA	1	1	1	1	1	1	1	1	1	1	1	1	709157	3/8" - 16 ESNA Lock Nut	◆	See Note #2
AB	1	1	1	1	1	1	1	1	1	1	1	1	3894	Cylinder Nut	◆	
AC	1	1	1	1	1	1	1	1	1	1	1	1	4415	Retainer	◆	See Note #3
AD	2	2	2	2	2	2	2	2	2	2	2	2	4349	Hex Stud	◆	See Note #3
AE	1	1	1	1	1	1	1	1	1	1	1	1	6116	NL Spring	◆	

1. Items marked ◆ specify by finish: US-3, US-4, US-10, US-10B, US-26, US-26D, US-32 and US-32D.  
 2. Used on rim and vertical trim only.  
 3. Used on mortise trim only.  
 4. Item is modified for mortise device application.  
 5. For mortise device use item 20.

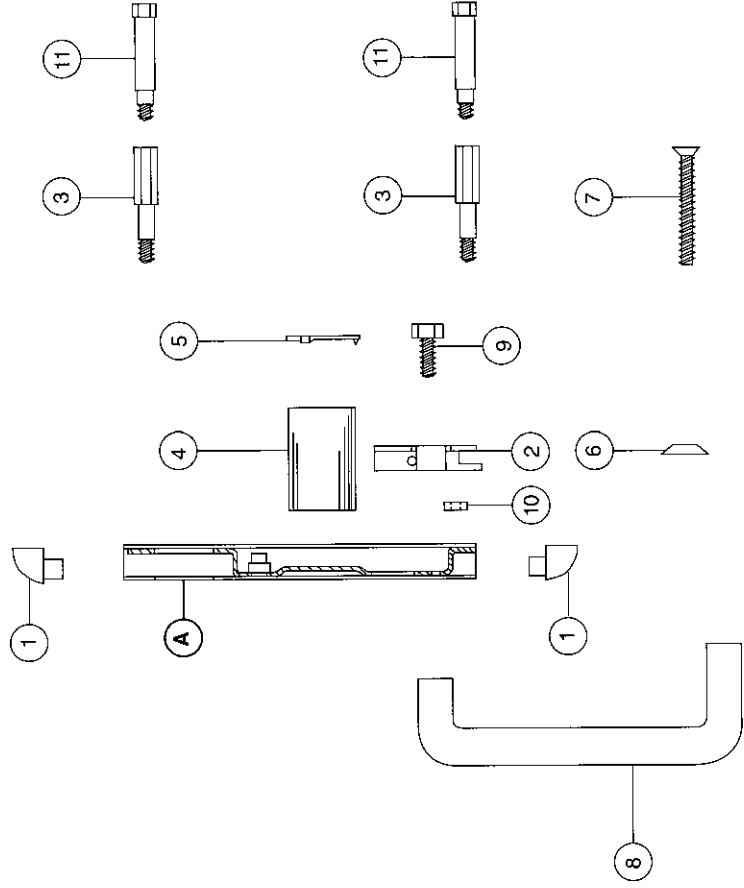
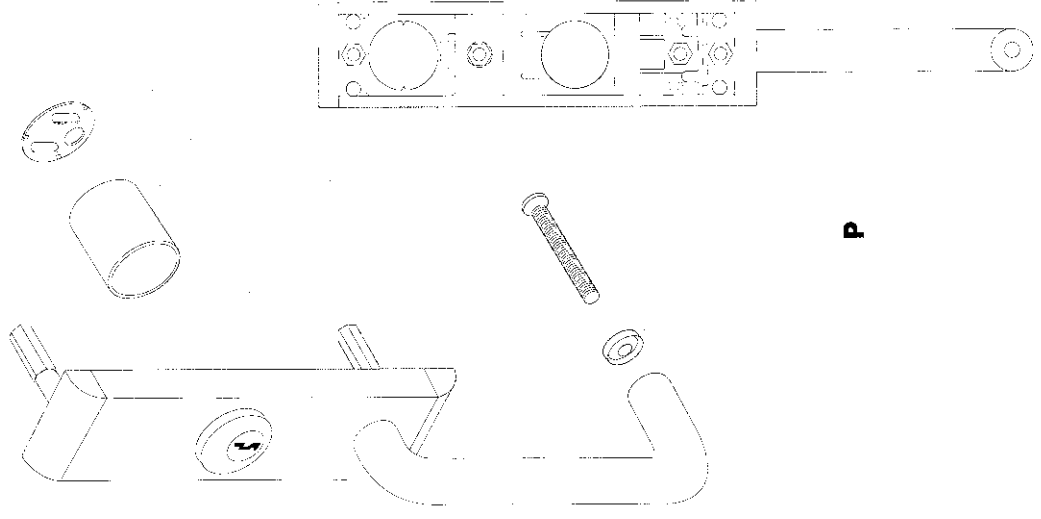
# Control Trim

# 17 Series

DT Rim & Vertical (1797RV),  
DT Mortise (1798M) and P (1799RV)

Item	DT(RV)	Quantity		Part No.	Description	Finish	Remarks
		P	DT(M)				
A	1	1		900411	Housing Sub Assembly (P)	◆	
	1	1		900412	Housing Sub Assembly (DT)	◆	
1	2	2		4582	Forged End Caps	◆	
2	1	1		4603	Thumbpiece Bracket		
3	2	2		4270	Hex Stud		
4	1	1		4120	Cylinder Spacer Collar		
5	1	1		4121	Cylinder Anchor Plate		
6	1	1			1/4" CSK Finish Washer	◆	See Note #2
7	1	1			1/4" - 20 x 2 - 1/4" FPHMS	◆	See Note #2
8	1	1		4256	Apollo Pull Grip	◆	
9	1	1		709224	1/4" - 20 x 1" Hex Head MS		
10	1	1		4861	Spacer		
11		2		4349	Hex Stud		

1. Items marked ◆ specify by finish. US-3, US-4, US-10, US-10B, US-26, US-26D, US-32 and US-32D.  
2. Items without part numbers specify by description and finish.

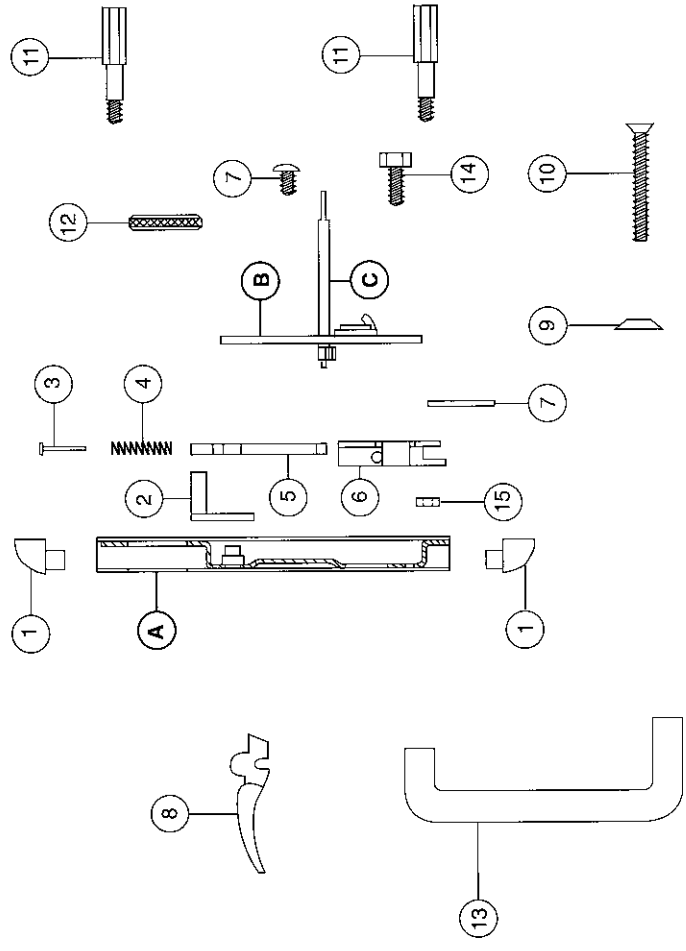
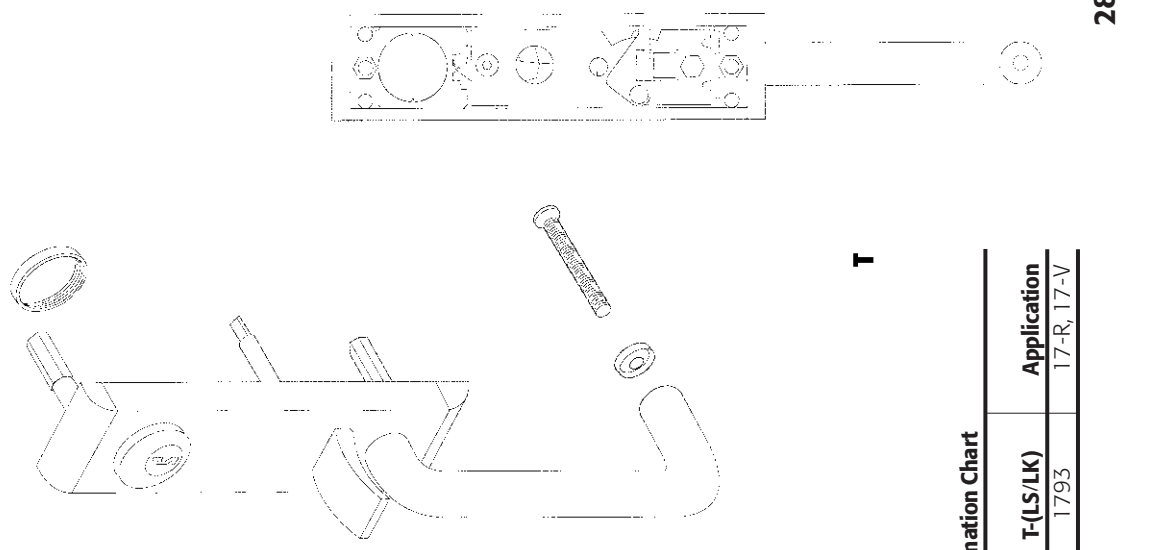


# Control Trim 17 Series

T, T-NL and T-(LS/LK)

Item	Quantity		Description	Finish	Remarks
	T	T-NL			
A	1	1	Housing Sub Assembly	◆	
			Housing Sub Assembly	◆	
B	1	1	Retainer Plate Sub Assembly		
C	1	1	Actuator Sub Assembly		
1	2	2	Forged End Caps	◆	
2	1	1	Locking Plate		
3	1	1	3/32" x 3/4" Solid Rivet		
4	1	1	Actuator Spring		
5	1	1	Actuator Plate		
6	1	1	Thumbpiece Bracket		
7	1	1	1/8" x 1 - 1/4" Pin type "C"	◆	
8	1	1	Thumbpiece	◆	
9	1	1	1/4" CSK Finish Washer	◆	See Note #2
10	1	1	1/4" - 20 x 2 - 1/4" FPHMS	◆	See Note #2
11	2	2	Hex Stud		
12	1	1	Cylinder Nut		
13	1	1	Pull Grip	◆	
14	1	1	1/4" - 20 x 1" Hex Head MS		
15	1	1	Spacer		
Part not Shown			NL Spring		
			6116		

1. Items marked ◆ specify by finish: US-3, US-4, UUS-10, US-10B, US-26, US-26D, US-32 and US-32D.  
2. Omit item for 17 Series device trim.



### Model Information Chart

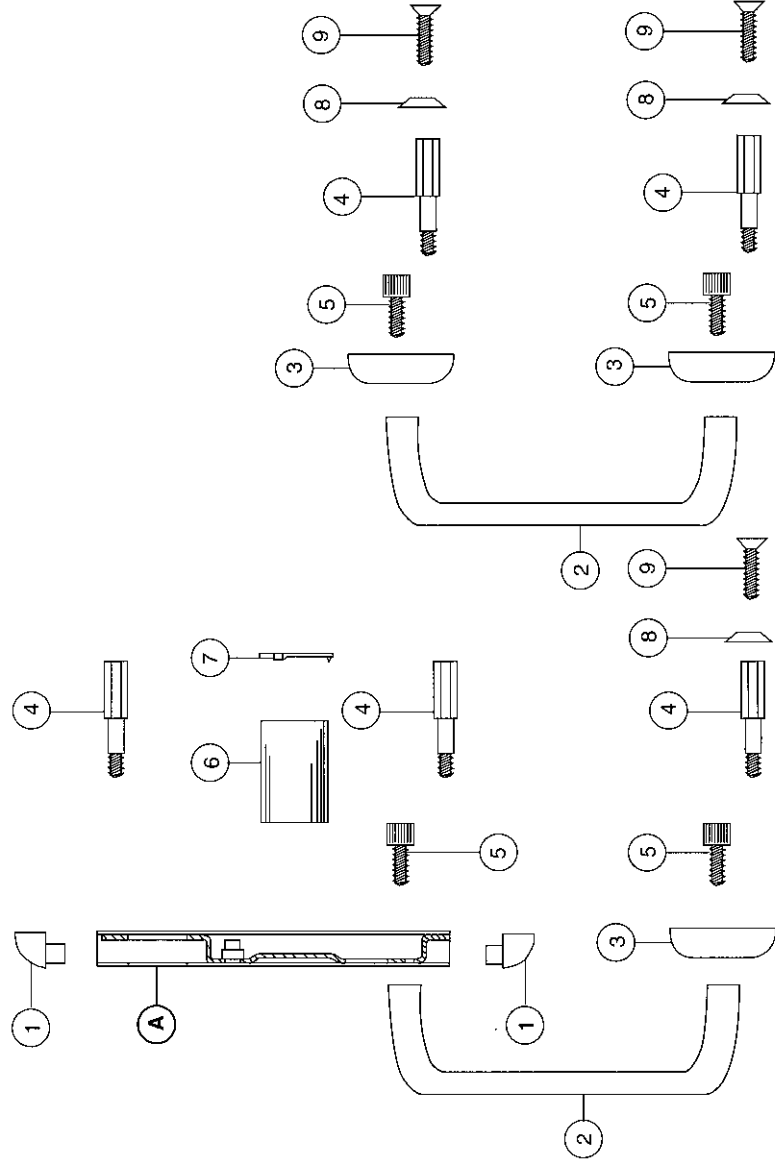
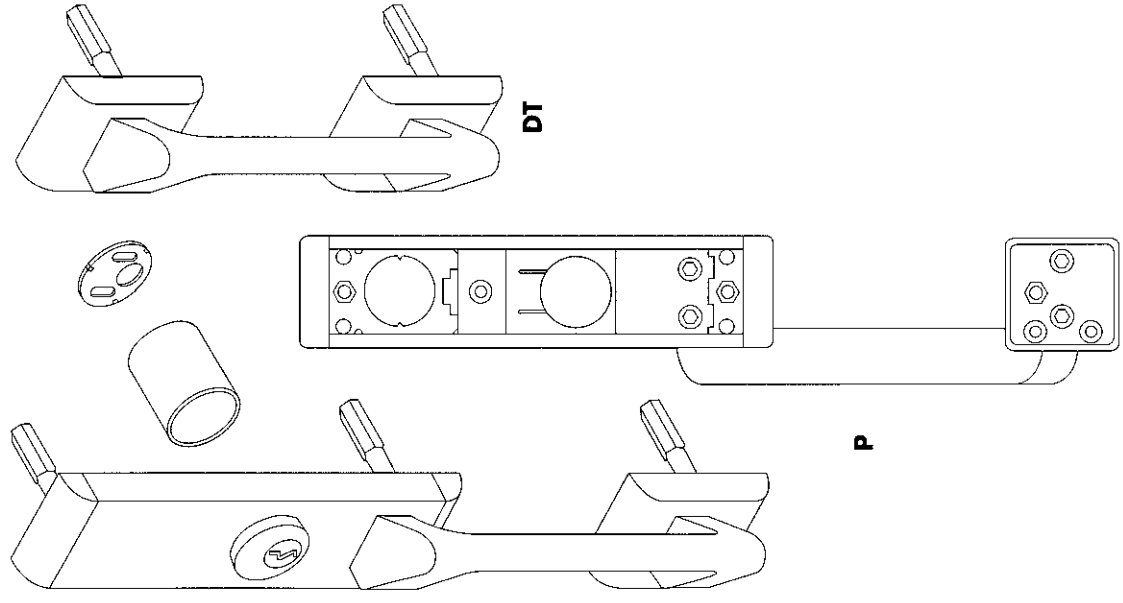
Trim Model No.	T	T-NL	T-(LS/LK)	Application
	1796	1796NL	1793	17-R, 17-V

# Delta Trim 17 Series

C (1603), DT (1600) and P (1601)

Item	Quantity			Part No.	Description	Finish	Remarks
	C	DT	P				
A	1			900416	Housing Sub Assembly	◆	
			1	900417	Housing Sub Assembly	◆	
1	2	2		4582	Forged End Caps	◆	
2		1		4377	Pull Grip	◆	
3	2	1		4313	Pull Pad	◆	
4	2	2		4270	Hex Stud		
5	2	4		709078	1/4" - 20 x 1/2" Hex Cap Screw		
6	1	1		4120	Cylinder Spacer Collar		
7	1	1		4121	Cylinder Anchor Plate		
8	2	1			1/4" CSK Finish Washer	◆	See Note #2
9	2	1			1/4" - 20 x 3/4" FPHMS	◆	See Note #2

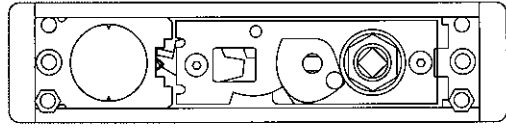
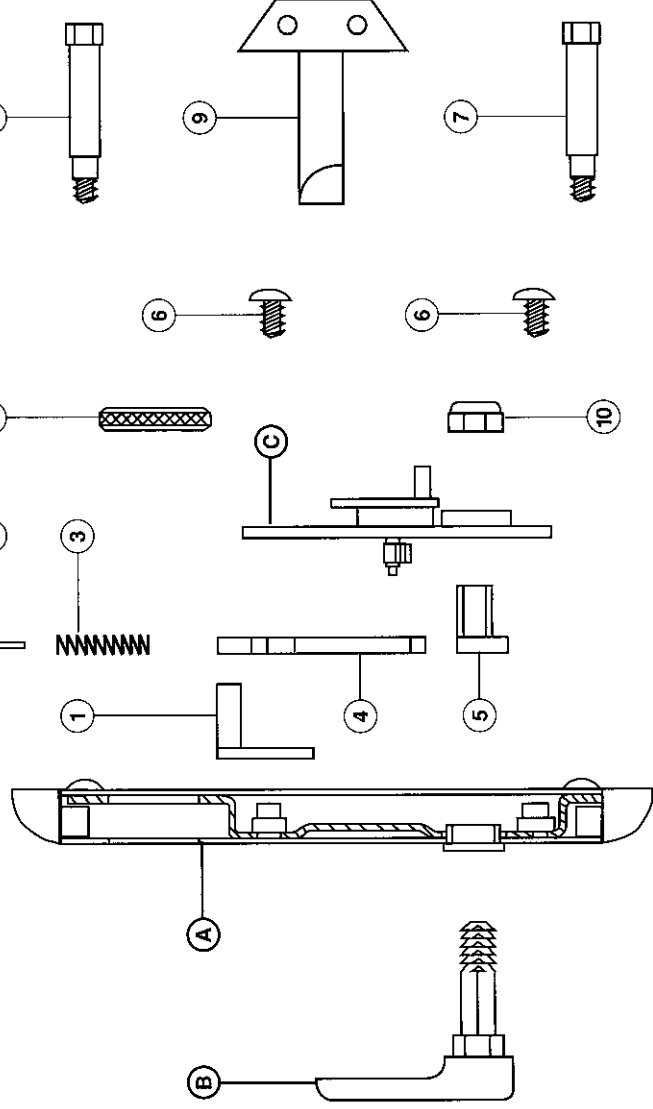
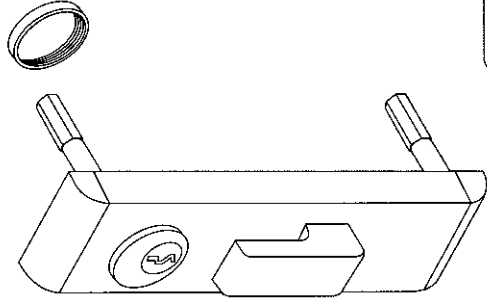
1. Items marked ◆ specify by finish: US-3, US-4, US-10, US-10B, US-26, US-26D, US-32 and US-32D.  
2. Items without part numbers specify by description and finish.



# Delta SL- Surface Vertical Only XX, 18 and 17 Series SL (1618), SL-(LS/LK) (1658) and SL-NL (1619)

Item	Quantity	Description	Part No.	Finish	Remarks
A	1	Housing Sub Assembly	900229	◆	
	1	Housing Sub Assembly	900234	◆	
B	1	SL Sub Assembly	900289	◆	
C	1	Retainer Plate Sub Assembly	900060		
1	1	Locking Plate	4268		
2	1	3/32" x 3/4" Solid Rivet	709239		
3	1	Actuator Spring	4605		
4	1	Actuator Plate	4265		
5	1	Knob Hub	4274		
6	2	1/4" - 20 x 5/16" Button HD Cap Screw	709229		
7	2	Hex Stud	4270		
8	1	Cylinder Nut	3894		
9	1	Lift Block	4342	◆	See Note #2
10	1	3/8" - 16 ESNA Lock Nut	709157		
Part not Shown	1	NL Spring	6116		

1. Items marked ◆ specify by finish: US-3, US-4, US-10, US-10B, US-26, US-26D, US-32 and US-32D.  
2. Item is attached to surface vertical rod.



SL