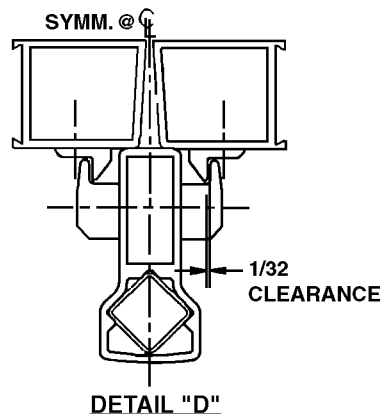
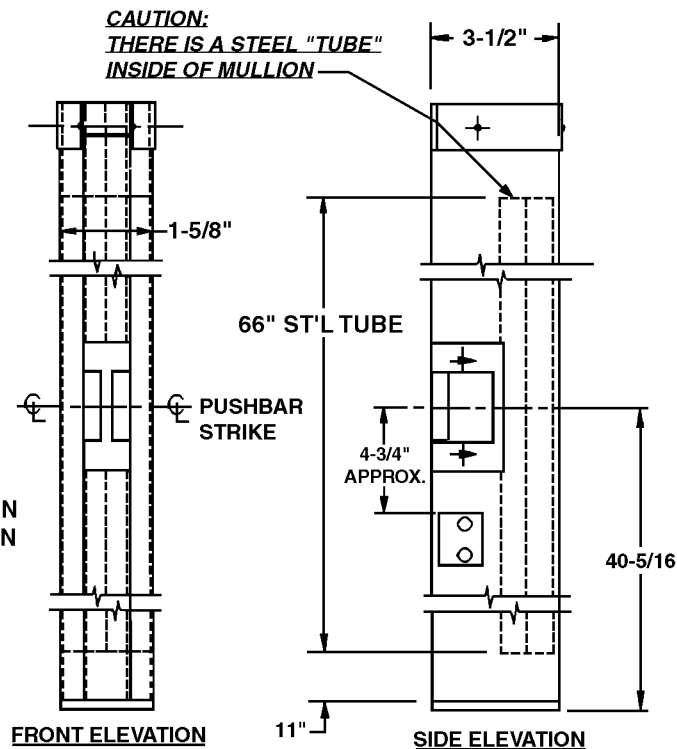
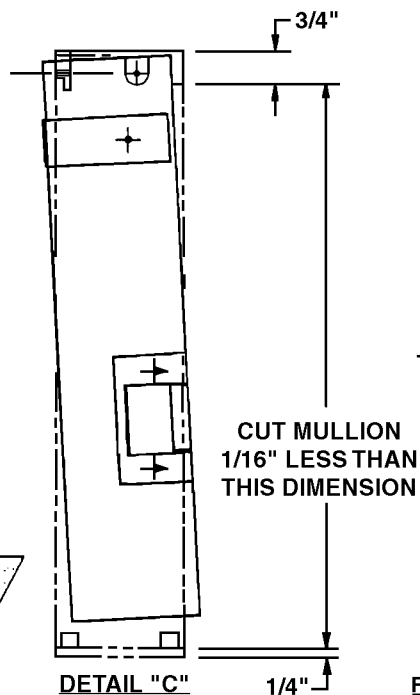
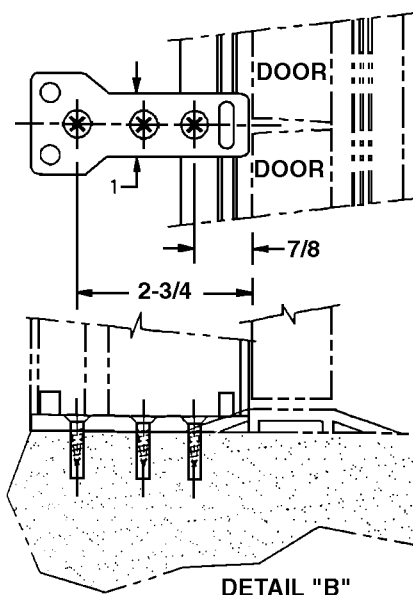


INSTALLATION INSTRUCTIONS

1. MOUNT TOP AND BOTTOM FITTING.
(SEE DETAILS "A" & "B")
TO INSTALL FITTINGS, LINE UP FITTINGS
WITH CENTER OF DOORWAY AND FLUSH
WITH DOORS. CUT OUT THRESHOLD TO
RECEIVE BOTTOM FITTING.
2. CONTROL MULLION OVER TOP FITTING AND
SWING INTO POSITION ON BOTTOM FITTING.
3. SLIDE THE MULLION CLAMP OVER THE
TOP FITTING AND SECURE WITH THREE SCREWS.
4. LOCATE SECURITY CLIPS ON DOOR AS SHOWN
(SEE "DETAIL "D"). DRILL AND TAP DOOR AS
REQUIRED AND ASSEMBLE.



F		DOR-O-MATIC®		Indianapolis, Indiana	
E		TITLE		RM-70 REMOVABLE MULLION TEMPLATE (KAWNEER)	
D		MATERIAL		DRAWN BY BK 5-3-94	
C		FINISH		CHECKED BY DATE	
B		HEAT TREAT		REV. LETTER A	
A		REMOVED RM-20 DESIGNATION		DRAWING NO. B4270108808	
-		INITIAL RELEASE		REV. E.C.N. NO.	
REV.		DATE		DESCRIPTION	
		BK		MADE BY	

TOLERANCES: UNLESS OTHERWISE SPECIFIED ARE AS FOLLOWS:
 3-PLCS = ±.005
 2-PLCS = ±.010
 1-PLC = ±.020
 FRACTIONAL: ±1/32
 ANGULAR: ±1/2°
 ALL MACHINED SURFACES 125/
 NOTES: MULLION FREE OF BURS & SHARP EDGES.