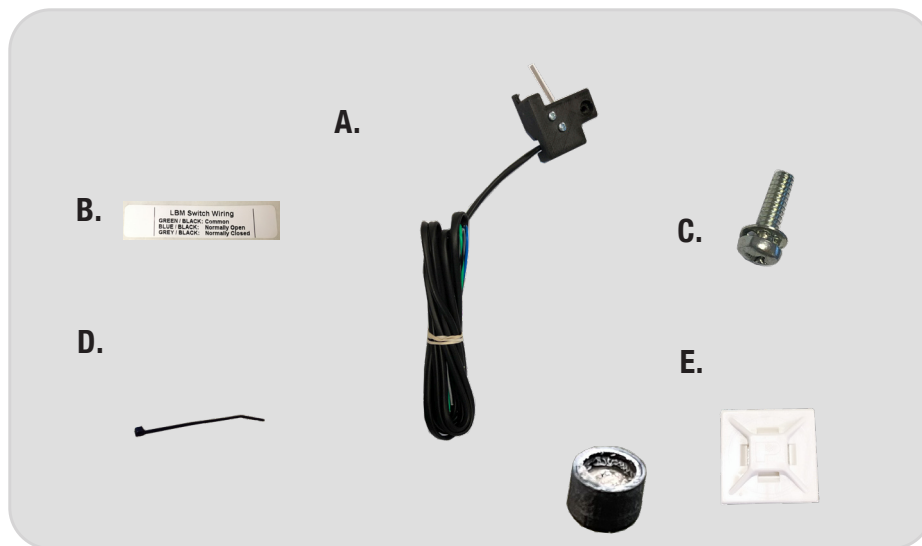


HAGLBMKIT-ED



INSERT INSTRUCTIONS

FIELD INSTALLABLE HAGER 4500, PDQ 6200 & LAWRENCE RIM 8000 SERIES EXIT DEVICE.



KIT INCLUDES

- A. 1- LBM Bracket
- B. 1- LBM Color code sticker
- C. 1- 40226 Phillips Pan Head w/ LW 6-32 x 1/2"
- D. 1- Cable Tie
- E. 1- Sticky Pad
- F. 1- 60754 Cap

TOOLS REQUIRED

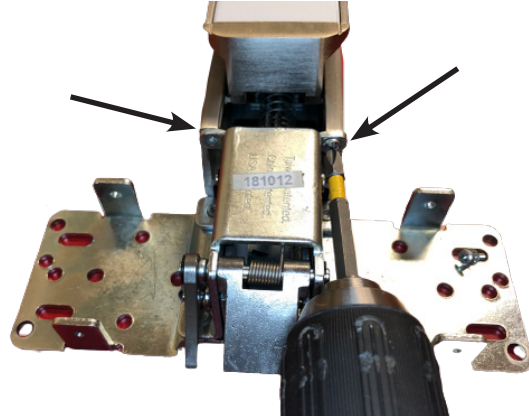
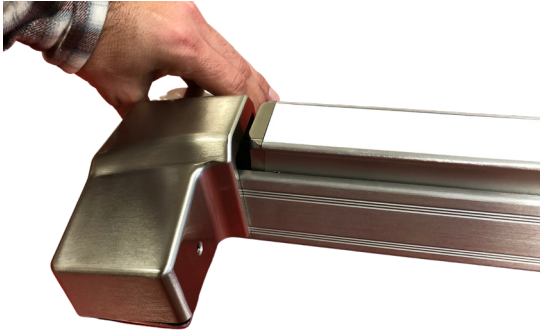
Cordless Drill or Phillips Screwdriver

SPECIFICATIONS

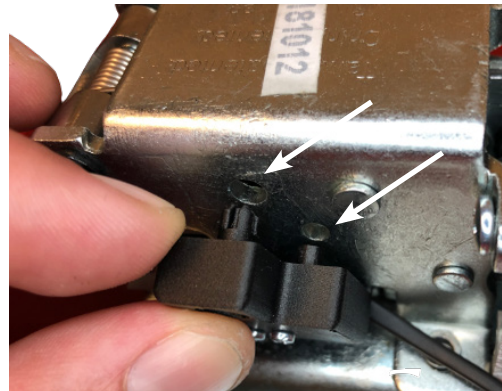
- Single Pole - Double Throw (SPDT)
- Rating: .5A @24VAC
- Configuration: Green/Black - Common (C)
Blue/Black - Normally Open (NO)
Gray/Black - Normally Closed (NC)

INSTALLATION INSTRUCTIONS

1. REMOVE THE HEAD COVER & (2) SCREWS SECURING HOUSING TO PUSH PAD.



2. SLIDE THE HOUSING OFF & PUSH LBM BRACKET INTO EXISTING HOLES ON THE EXIT DEVICE.



3. RUN THE LBM WIRES DOWN THE PUSH PAD TO THE BACK OF THE DEVICE & SLIDE HOUSING BACK ON KEEPING WIRES IN THE LOWER CHANNEL.

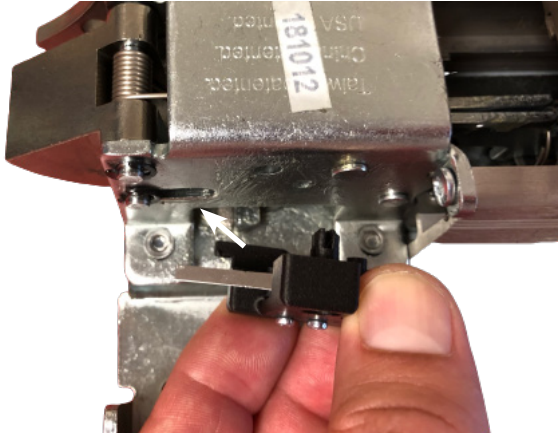


INSTALLATION INSTRUCTIONS

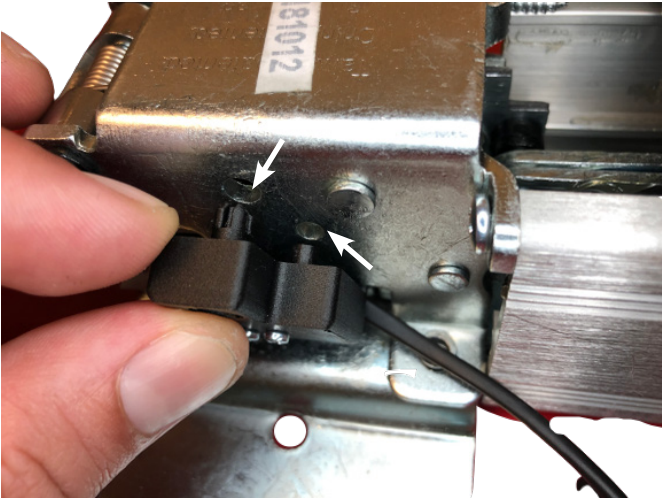
- 4. REMOVE LBM BRACKET & RE-INSTALL (2) SCREWS TO SECURE HOUSING TO PUSH PAD.**



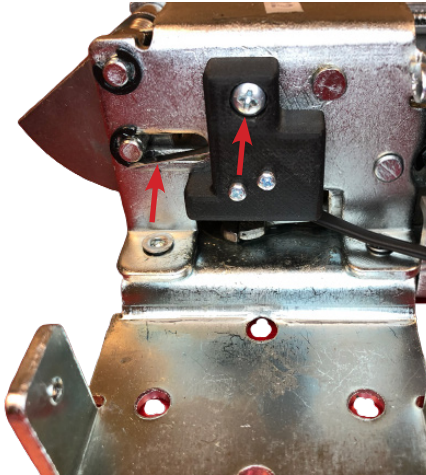
- 5. SLIDE ARM OF THE LBM BRACKET INTO THE OPENING AT THE BOTTOM OF THE EXIT DEVICE HEAD.**



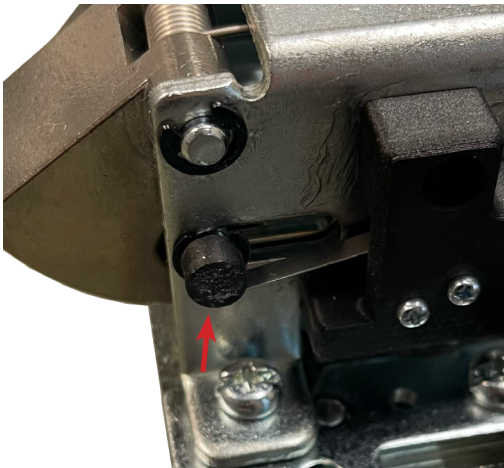
- 6. PUSH THE TWO TABS ON THE LBM BRACKET INTO THE EXISTING HOLES IN THE EXIT DEVICE HEAD.**



- 7. CONFIRM SWITCH ARM IS UNDERNEATH RIM LATCH PIN. INSTALL (1) 40266 SCREW INTO TOP HOLE ON LBM BRACKET TO SECURE BRACKET TO EXIT DEVICE HEAD.**



- 8. INSTALL (1) 60754 CAP ON TO LATCHBOLT ROLL PIN.**



- 9. PULL WIRE SLACK AND ADD CABLE TIE & STICKY PAD FOR A STRAIN RELIEF. ADD LBM COLOR CODE STICKER**

