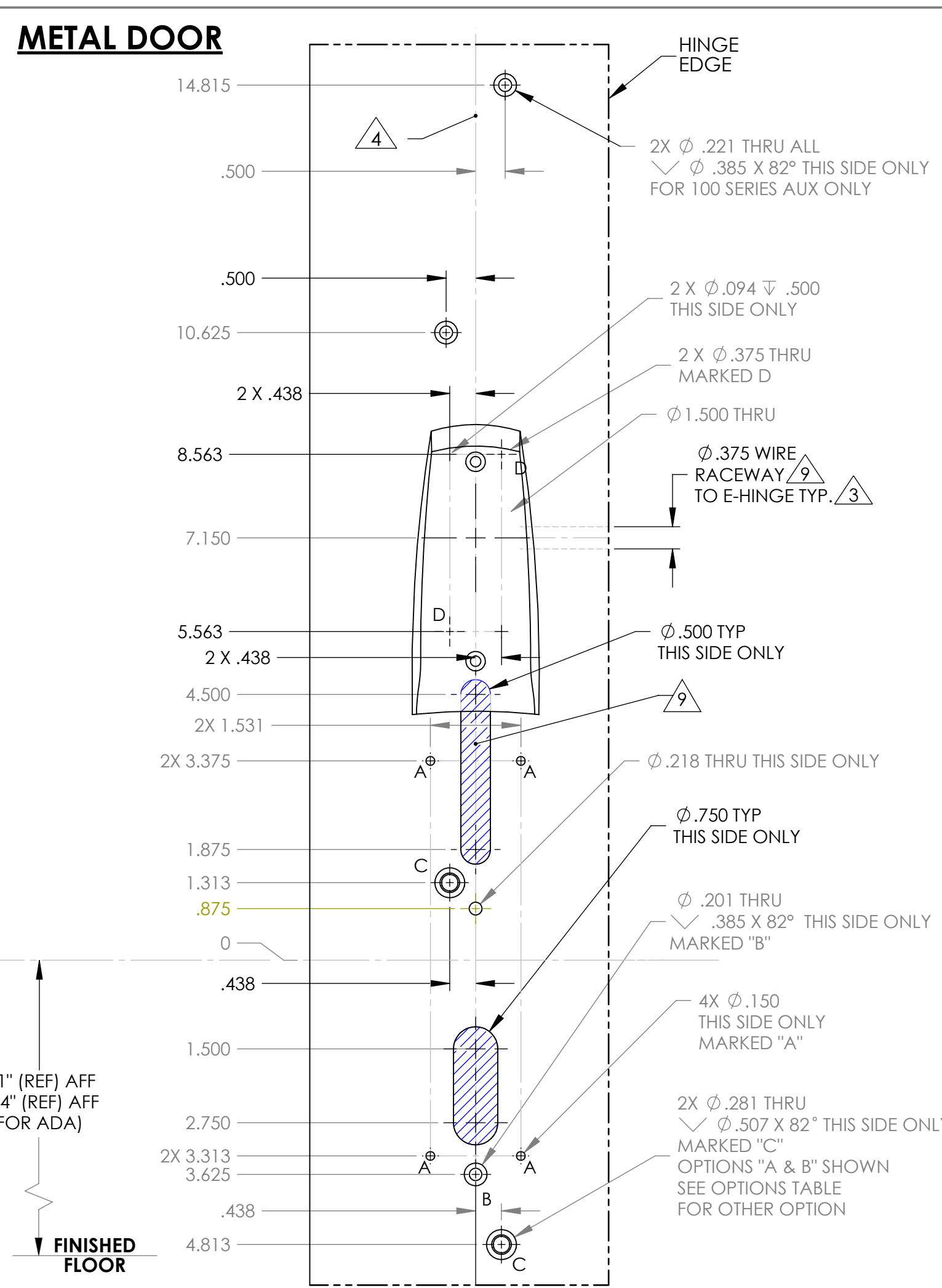
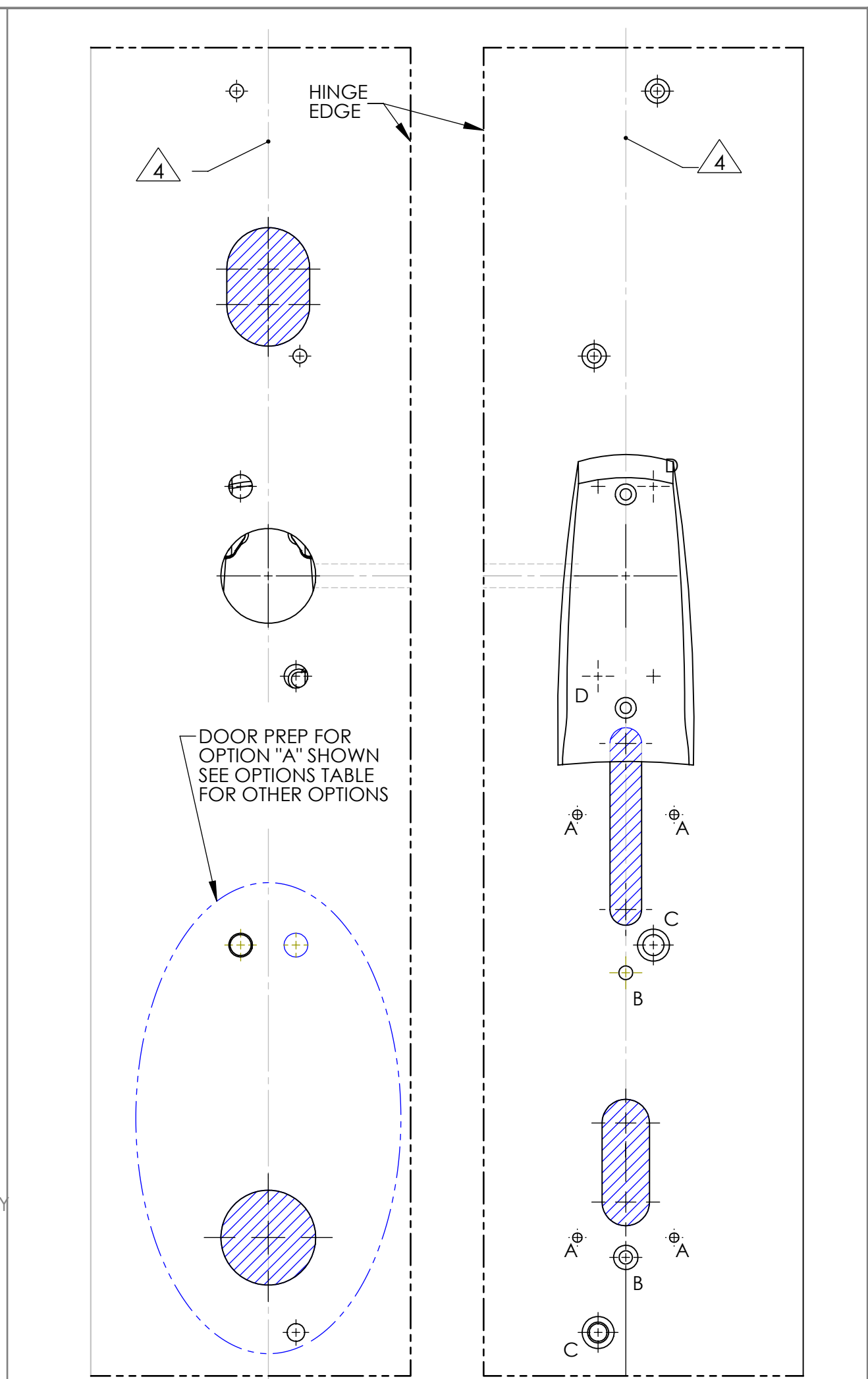


L.H.R.B. OUTSIDE

L.H.R.B. BEVEL SIDE



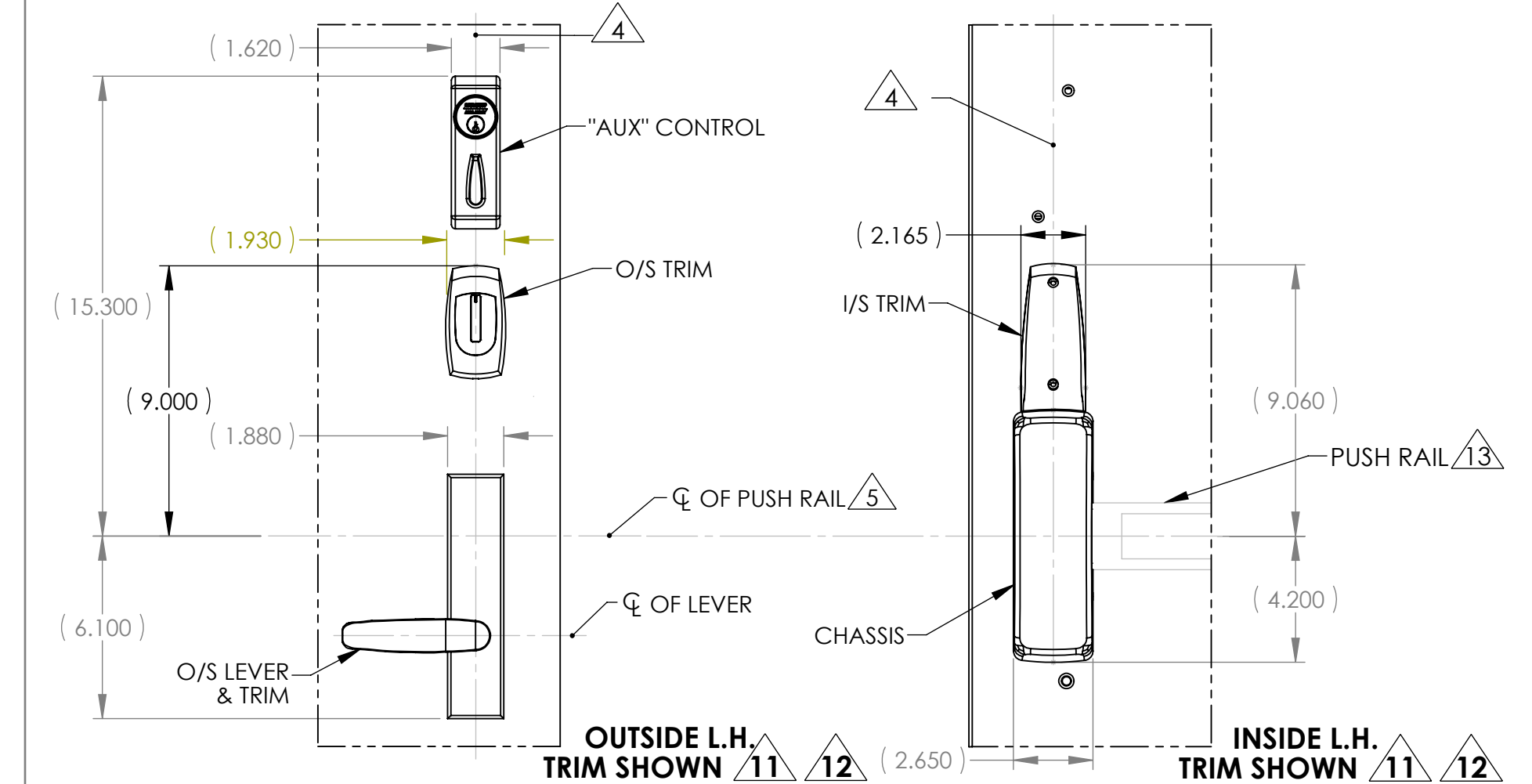
L.H.R.B. INSIDE



R.H.R.B. OUTSIDE

R.H.R.B. INSIDE

- NOTES:**
- DRAWING IS NOT TO SCALE.
 - REFERENCE STRIKE TEMPLATE FOR DETAILS TO PREPARE FRAME.
 - FOR ELECTROLYNX APPLICATIONS, REFER TO MCKINNEY TRANSFER DEVICE CATALOG.
 - VERTICAL CENTERLINE IS REFERENCED FROM THE CENTERLINE OF THE BEVEL. (INDUSTRY STANDARD BEVEL IS 1/8 INCH IN 2 INCHES.)
 - CONSULT THE AUTHORITY HAVING JURISDICTION (AHJ) TO VERIFY THE RECOMMENDED MOUNTING HEIGHT ABOVE THE FINISHED FLOOR (AFF). LIMITATIONS IN THE DOOR CONSTRUCTION PROCESS MAY REQUIRE SOME HOLES TO BE FIELD-LOCATED USING THE PHYSICAL PART AS A TEMPLATE.
 - STANDARD TOLERANCE OF ± .015 APPLIES TO ALL DOOR PREPARATION REQUIREMENTS, UNLESS OTHERWISE SPECIFIED.
 - DOOR REINFORCEMENT IS RECOMMENDED TO IMPROVE (SURFACE MOUNTED) FASTENER HOLDING POWER AND CRUSH RESISTANCE (WHEN THRU-BOLTING IS EMPLOYED). CONSTRUCTION TECHNIQUES SHOULD REFLECT INDUSTRY BEST PRACTICES (I.E. WDMA, SDI) AND AUTHORIZED METHODS WHERE LABEL SERVICE (I.E. UL, W-H) IS IN EFFECT.
 - WIRE RACEWAY AREAS SHALL BE FREE OF OBSTRUCTIONS & SHARP EDGES TO PROTECT WIRES FROM CUTS & ABRASIONS.
 - CAREFULLY NOTE WHICH FEATURES ARE OPTIONAL, (WHETHER THE FEATURE APPLIES TO BOTH SIDES OF THE DOOR AND/OR IF A DEPTH APPLIES.)
 - MAXIMUM PRODUCT DIMENSIONS ARE SHOWN FOR THE PURPOSE OF VERIFYING FITMENT WITH DOOR FRAME STOPS, DOOR STILE SIZE & LIGHT/LOUVER KITS.
 - IF OPTIONAL LEVERS OR ROSES ARE USED REFERENCE THE RELATED PRODUCT DIMENSIONS TO VERIFY THE FITMENT REQUIREMENTS.
 - SEE TEMPLATE 4445 (METAL DOORS) OR 4431 (WOOD DOORS) FOR ADDITIONAL EXIT DEVICE PREP INFORMATION. SEE TEMPLATE 4569 FOR 56-H WIRE RACEWAY. CONCEALED DOOR POSITION SWITCH MODEL 3287 IS INCLUDED WITH THIS PRODUCT. SEE SARGENT TEMPLATE A7448B. USE AND INSTALLATION LOCATION TO BE SPECIFIED BY OTHERS.

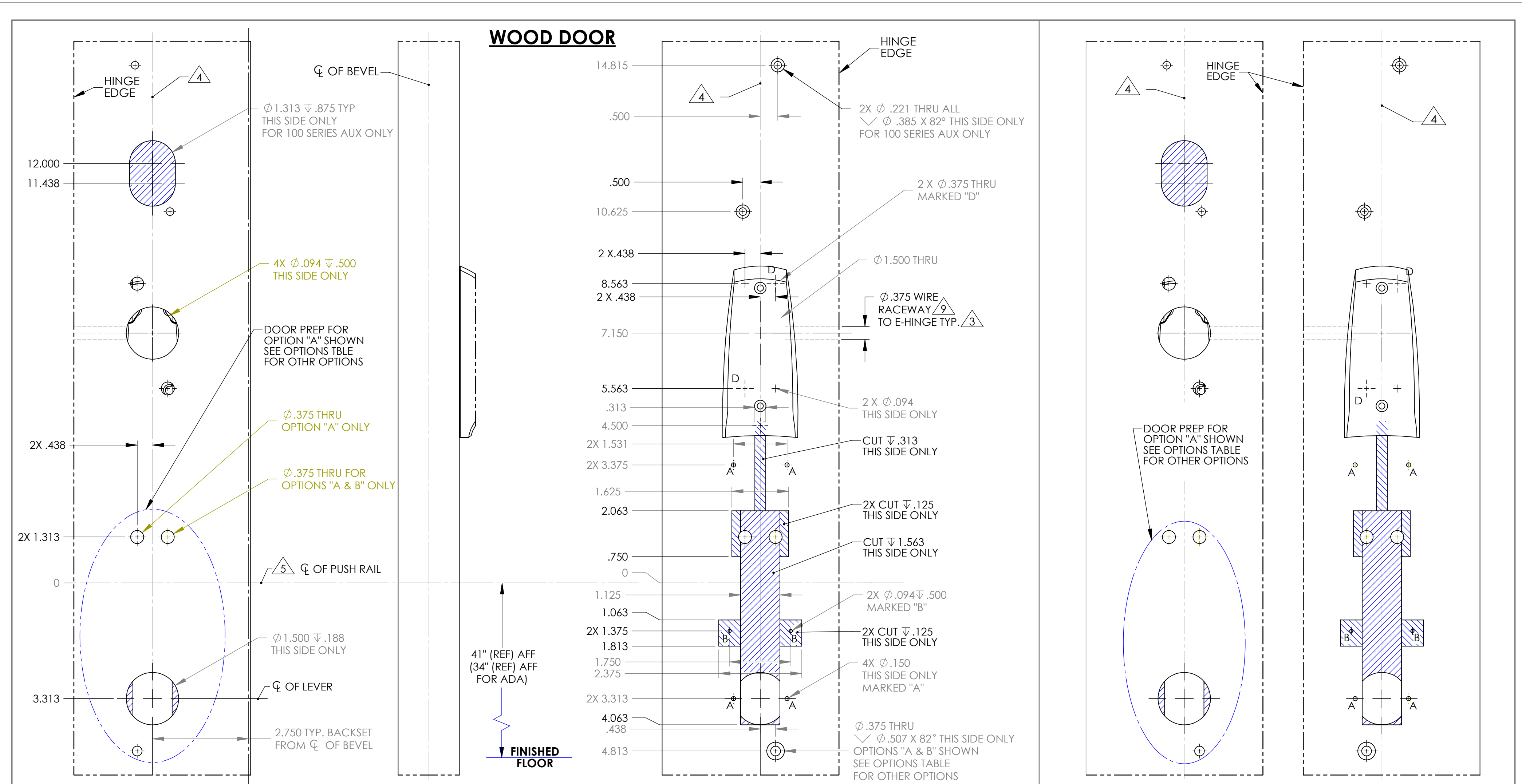


OUTSIDE L.H. TRIM SHOWN

INSIDE L.H. TRIM SHOWN

AUTHORIZED PREFIXES			
H1, H2, 56-			
OPTIONS TABLE			
OPTION	PREFIX	TRIM	TEMPLATE
A	H1/H2	ELECTRICAL ET	-
B	H1-56 & H2-56	NON-ELECTRICAL 700 SERIES ET	4448
C	H1-56 & H2-56	800 SERIES THUMB & PULL TRIMS	SEE RELATED TRIM TEMPLATE
BACKSET DEFINITION		DOOR HANDING	
SARGENT Sargent Manufacturing Company ASSA ABLOY 100 Sargent Drive New Haven, CT 06511 DOOR MANUFACTURERS TEMPLATE: HARMONY SERIES, H1/H2 & H1/H2 56-METAL DOOR 8600 CVR DEVICE RELEASE DATE: 28 MARCH 2018 TEMPLATE NO. 4621 F SHEET 1 OF 2			

REVISION HISTORY				
ZONE	REV	DESCRIPTION	NAME/DATE	APPD/DATE
-	-	See Sheet 1	-	-



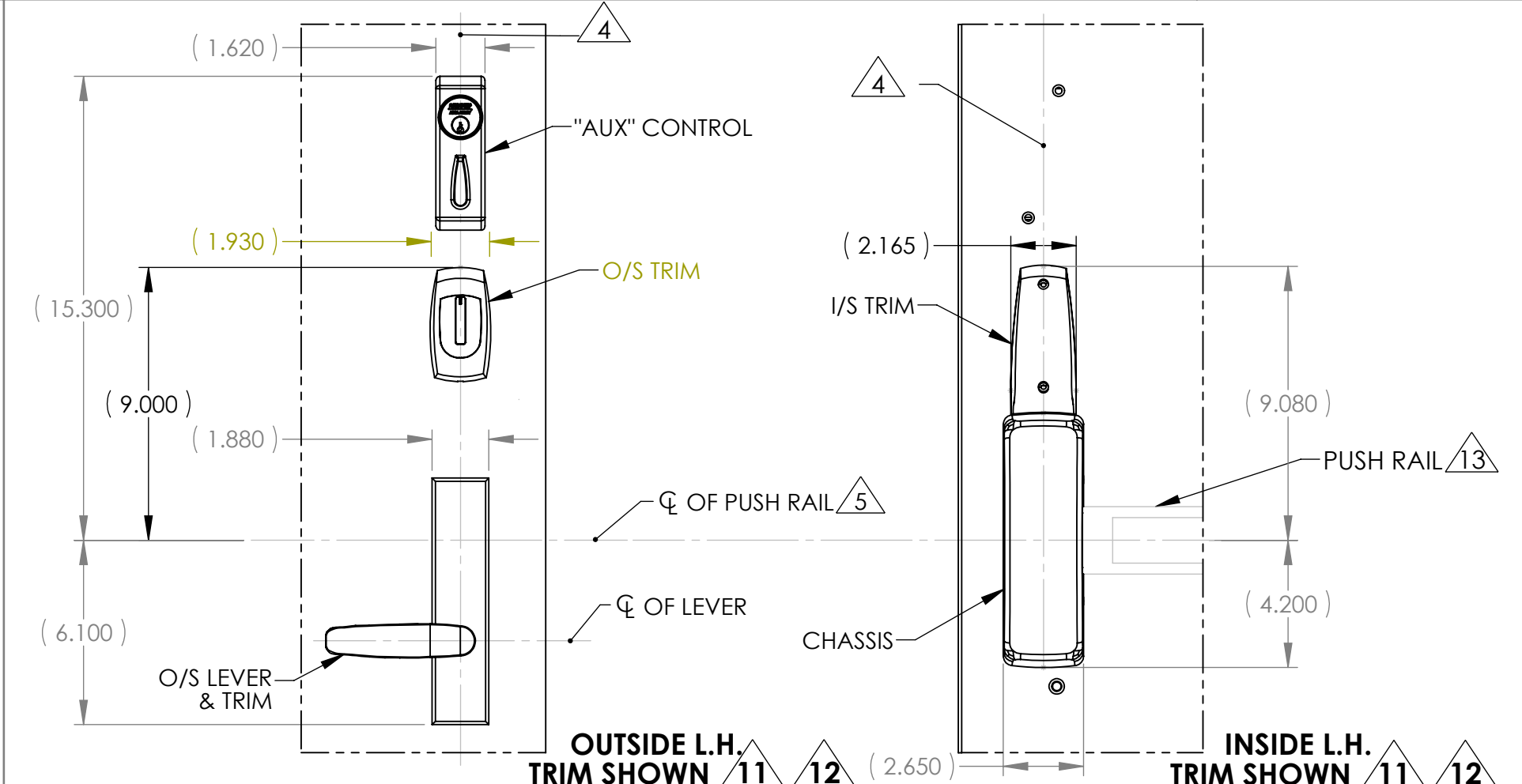
← TRIM BORDER LINE

L.H.R.B. OUTSIDE L.H.R.B. BEVEL SIDE

L.H.R.B. INSIDE

R.H.R.B. OUTSIDE R.H.R.B. INSIDE

- NOTES:
- DRAWING IS NOT TO SCALE. REFERENCE STRIKE TEMPLATE FOR DETAILS TO PREPARE FRAME.
 - FOR ELECTROLYNX APPLICATIONS, REFER TO MCKINNEY TRANSFER DEVICE CATALOG.
 - VERTICAL CENTERLINE IS REFERENCED FROM THE CENTERLINE OF THE BEVEL. (INDUSTRY STANDARD BEVEL IS 1/8 INCH IN 2 INCHES.) CONSULT THE AUTHORITY HAVING JURISDICTION (AHJ) TO VERIFY THE RECOMMENDED MOUNTING HEIGHT ABOVE THE FINISHED FLOOR (AFF). LIMITATIONS IN THE DOOR CONSTRUCTION PROCESS MAY REQUIRE SOME HOLES TO BE FIELD-LOCATED USING THE PHYSICAL PART AS A TEMPLATE.
 - STANDARD TOLERANCE OF $\pm .015$ APPLIES TO ALL DOOR PREPARATION REQUIREMENTS, UNLESS OTHERWISE SPECIFIED.
 - DOOR REINFORCEMENT IS RECOMMENDED TO IMPROVE (SURFACE MOUNTED) FASTENER HOLDING POWER AND CRUSH RESISTANCE (WHEN THRU-BOLTING IS EMPLOYED). CONSTRUCTION TECHNIQUES SHOULD REFLECT INDUSTRY BEST PRACTICES (I.E. WDMA, SDI) AND AUTHORIZED METHODS WHERE LABEL SERVICE (I.E. UL, W-H) IS IN EFFECT.
 - WIRE RACEWAY AREAS SHALL BE FREE OF OBSTRUCTIONS & SHARP EDGES TO PROTECT WIRES FROM CUTS & ABRASIONS.
 - CAREFULLY NOTE WHICH FEATURES ARE OPTIONAL. (WHETHER THE FEATURE APPLIES TO BOTH SIDES OF THE DOOR AND/OR IF A DEPTH APPLIES.)
 - MAXIMUM PRODUCT DIMENSIONS ARE SHOWN FOR THE PURPOSE OF VERIFYING FITMENT WITH DOOR FRAME STOPS, DOOR STILE SIZE & LIGHT/LOUVER KITS. IF OPTIONAL LEVERS OR ROSES ARE USED REFERENCE THE RELATED PRODUCT DIMENSIONS TO VERIFY THE FITMENT REQUIREMENTS.
 - SEE TEMPLATE 444S (METAL DOORS) OR 4431 (WOOD DOORS) FOR ADDITIONAL EXIT DEVICE PREP INFORMATION. SEE TEMPLATE 4569 FOR 56-H WIRE RACEWAY. CONCEALED DOOR POSITION SWITCH MODEL 3287 IS INCLUDED WITH THIS PRODUCT. SEE SARGENT TEMPLATE A7448B. USE AND INSTALLATION LOCATION TO BE SPECIFIED BY OTHERS.



AUTHORIZED PREFIXES			
H1, H2, 56-			
OPTIONS TABLE			
OPTION	PREFIX	TRIM	TEMPLATE
A	H1/H2	ELECTRICAL ET	-
B	H1-56 & H2-56	NON-ELECTRICAL 700 SERIES ET	4436
C	H1-56 & H2-56	800 SERIES THUMB & PULL TRIMS	SEE RELATED TRIM TEMPLATE

BACKSET DEFINITION		DOOR HANDING			
BACKSET		L.H.	INSIDE	R.H.	
			INSIDE		
			OUTSIDE		
			INSIDE		
			OUTSIDE		
		L.H.R.B.	OUTSIDE	R.H.R.B.	

SARGENT ASSA ABLLOY	Sargent Manufacturing Company 100 Sargent Drive New Haven, CT 06511
DOOR MANUFACTURERS TEMPLATE: HARMONY SERIES, H1/H2 & H1/H2 56- WOOD DOOR 8600 CVR DEVICE	RELEASE DATE: 28 MARCH 2018 TEMPLATE NO. 4621 F
SHEET 2 OF 2	

INTERPRET DRAWING PER ANSI Y14.5M-1994	DRAWN BY/DATE: MAC 4/22/08	SARGENT SARGENT Manufacturing Company 100 Sargent Drive New Haven, CT 06511
UNLESS OTHERWISE SPECIFIED ALL DIMENSIONS ARE IN INCHES.	CHECKED BY/DATE: PN 6/23/08	
TOLERANCE: .XX ±.01	MFG ENG/DATE: RMC 6/25/08	ART. HARMONY EXIT CVR (8600)
ANGLE: ±1°	FNL APPROVAL/DATE: CCH 7/16/08	TITLE: DOOR MANUFACTURERS TEMPLATE (H1/H2 8600)
FRACTION: ±1/64	FNL APPROVAL/DATE: NAM 7/29/08	SIZE: DWG No. 4621
CONFIDENTIAL		REV F
THIS DOCUMENT IS THE CONFIDENTIAL PROPERTY OF SARGENT MANUFACTURING COMPANY AND IS NOT TO BE REPRODUCED, USED OR DISCLOSED BY ANYONE WITHOUT THE EXPRESS WRITTEN PERMISSION OF THE SARGENT MANUFACTURING COMPANY.		SCALE: 1:2
PROD CTRL/FNL REL: NAM 7/29/08		SHEET: 2 of 2