

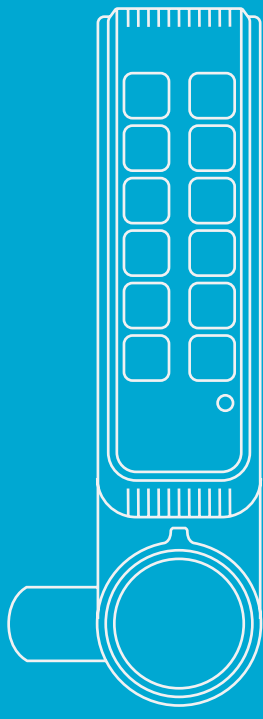
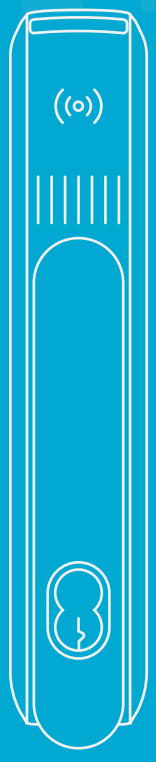
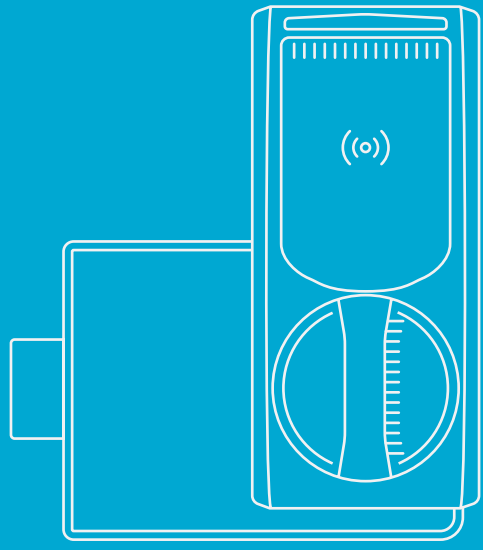
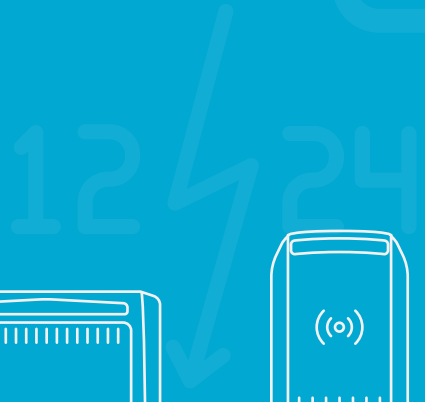
**ASSA ABLOY**  
Opening Solutions

Experience a safer  
and more open world

# Electronic Security Hardware

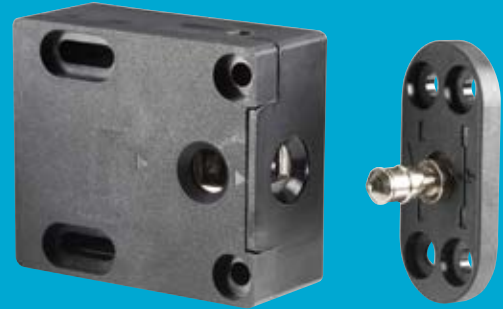
HES | Securitron Product Catalog





# HES<sup>®</sup> 610 Cabinet Lock

*The compact and cost effective cabinet locking solution*



The versatile, compact, cost effective cabinet lock to secure drawers or doors.

The HES 610 Cabinet Lock can be triggered by a simple relay as part of an access control system or with a stand-alone keypad. The HES 610 is available with or without locked state monitoring and has over 200 lbs of holding force.

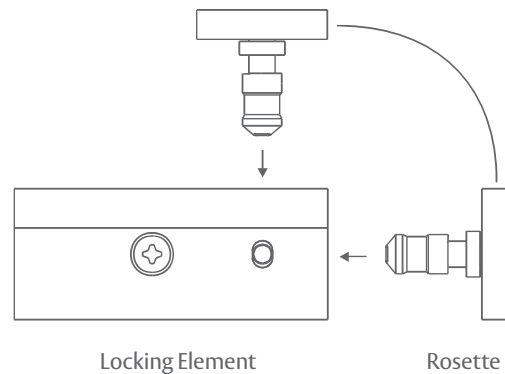
## Features

### Standard Features

- Field selectable fail secure/fail safe
- Compact design fits most drawers and cabinets
- Installation either at the side or front of cabinets
- SecuriCare three-year, no-fault, no questions asked warranty

### Optional Features

- **LM** Locked state monitoring



SecuriCare  
Warranty



Swinging  
Door



Drawers



Field Selectable  
(Fail secure  
/Fail safe)



Dual Voltage  
12/24



PoE  
Friendly