

Instruction Manual

HES K20 (13.56 MHz RFID) stand-alone cabinet lock

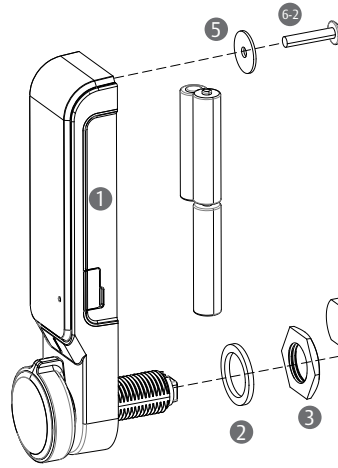
● Package contents



- 1 One (1) HES K20 cabinet lock
- 2 One (1) Rubber washer
- 3 One (1) M6 nut
- 4 One (1) Flat and one (1) Offset Locking Cam
- 5 Two (2) M4 washers
- 6 Five (5) Pan Head Phillips Screws
- 6-1 M4 x10mm locking cam screw
- 6-2 M4 x10mm (1-5mm thick door)
M4 x 20 mm (10-15mm thick door)
M4 x 25 mm (15-20mm thick door)
M4 x 30 mm (20-25mm thick door)

※ Power : 4.5V (AAA 1.5V x 3)

● Hardware Installation



Caution

- Risk of explosion if battery is replaced by an incorrect type.
- Please only use new alkaline batteries.

LED Feedback

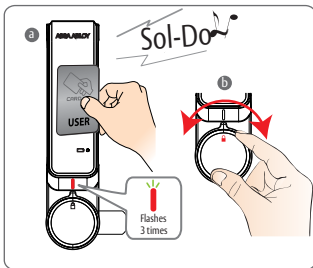
- Red
- Yellow
- Amber

Audio Feedback

- Short Beep - "Beep"
- Std. Beep - "Sol-Do"
- Long Beep - "Do-Mi-Sol"

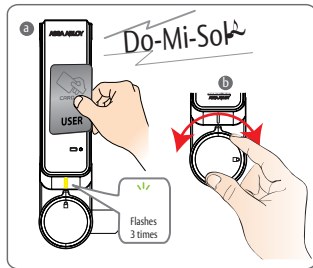
● Public Mode (One-time Use)

Lock the door



- a Close the cabinet door and present a User Credential
-3x flashing Red LED's followed by a long beep
- b Rotate the knob to the locked position

Unlock the door

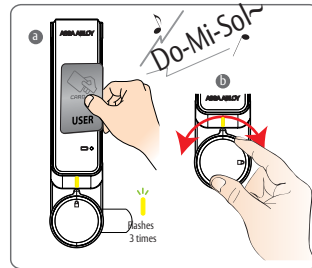


- a Present a registered User Credential
-3x flashing Yellow LED's followed by an extended beep
- b Rotate the knob to the locked position and open the cabinet door

- ※ **Public Mode (One time use)**
- Previously registered User Credential will be erased after unlock and remain open for next user.

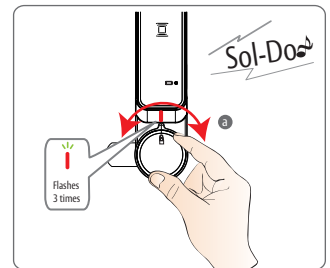
● User Credentials in Private Mode

Unlock the door



- a Present a registered User Credential
-3x flashing Yellow LED's followed by an extended beep
- b Rotate the knob to the unlocked position and open the cabinet door

Lock the door

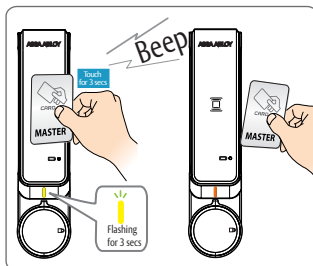


- a Close the cabinet door and rotate the knob to the locked position
-3x flashing Red LED's followed by a long beep

- ※ **Private Mode (Ongoing use)**
- Return the handle to the locked position.
The lock will automatically relock after 3 seconds.

● Set Up for Public & Private Mode

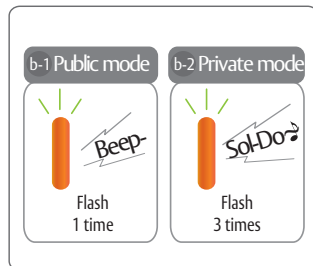
Step 1



- a Present "1st" Master Credential for 3 seconds to set programming mode
-Followed by a short beep

- ※ -Note: Only the "1st" Master Credential can be used to set programming mode

Step 2

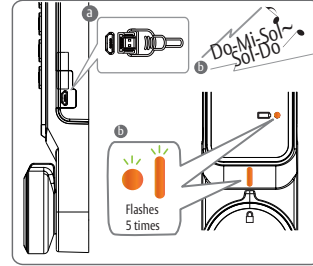


- b **Public Mode**
2x flashing Amber LED's followed by a short beep

- Private Mode**
3x flashing Amber LED's followed by a long beep

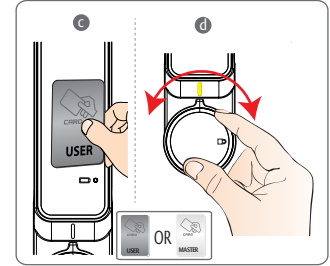
● Emergency Power

Step 1



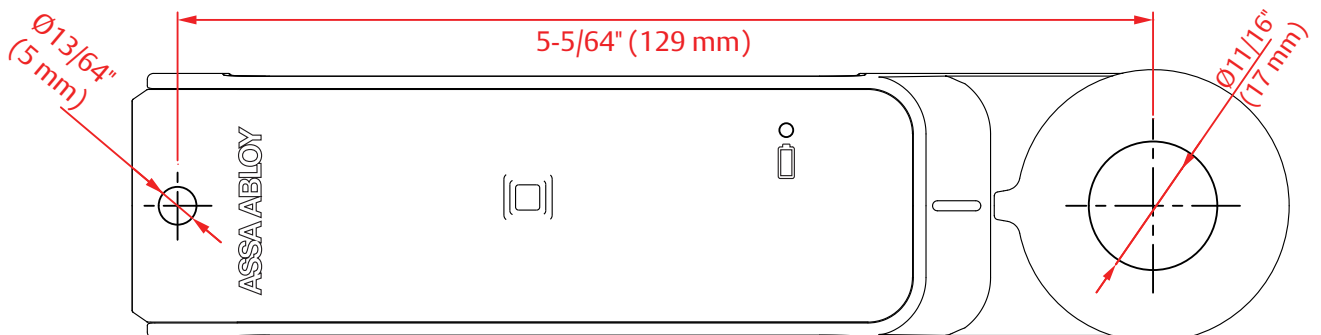
- a Connect a standard 5 pin Micro USB cable to the USB port on the right side of the lock
- b When power is applied, both LED's flash 5x followed by an extended beep

Step 2



- c Present a valid User Credential or Master Credential to unlock the cabinet
-Existing user credentials will be deleted when a valid Master Credential is used.
-User Credentials will need to be set again during programming of private mode.
- d Open the door and change all 3 batteries

Installation Template

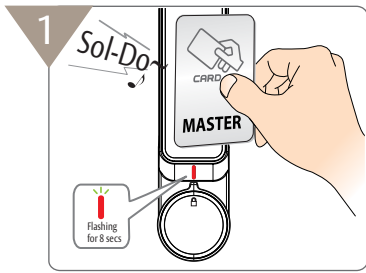


Registering Credentials

Step 1: Master Credentials

Step 2: Override Credentials

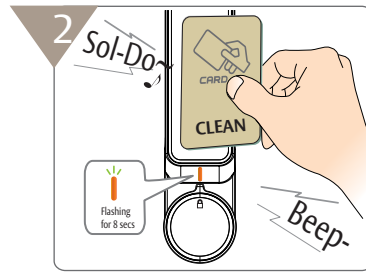
Step 3: User Credentials



- Present a credential to register as a Master Credential
- Note: The first credential presented will be registered as a Master Credential
-Flashing Red LED's for 8 seconds followed by a long beep
- Present new Master Credential(s)
-Up to 20 Master Credentials can be registered
- Present the same Master Credential 2x to end Master Credential programming mode
-Flashing Red LED's for 8 seconds

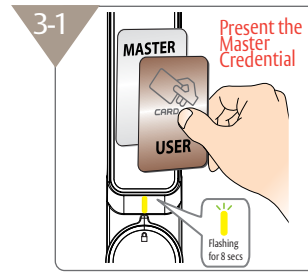
※ Important Note: Registration of Override Credentials starts automatically at the end of Master Credential programming mode

※ Clearly mark 1st Master Credential after initial programming and keep in a safe place



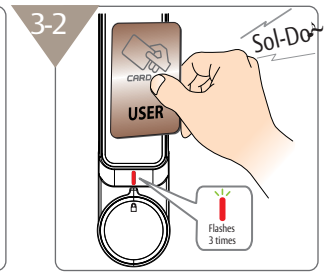
- End of Master Credential programming mode starts Override Credential programming mode
-Flashing Orange LED's for 8 seconds
- Present new Override Credential(s)
-(Up to 20 Override Credentials can be registered)
- Present the same Override Credential 2x to end Override Credential programming mode

※ Note: Skip this step if Override Credentials need to be deleted or are not required



g Private Mode

- Present any registered Master Credential
-Flashing Yellow LED's for 8 seconds
- Present new User Credential(s)
-(Up to 20 User Credentials can be registered)
- Note: Skip this step if Override Credentials need to be deleted or are not required



i Public Mode

- Present a User Credential
-Red LED blinks 3x followed by a long beep

Precautions for Override Credentials

- ※ Override Credentials can be used in Private Mode only
- ※ Note: Override Credentials are programmed to provide continuous access while the cabinet is in use.
- ※ Present the last Master Credential 3x or wait 8 seconds to end the Master Credential programming mode and skip programming Override Credentials.

Adding/Removing Credentials

Change the Master Credential(s)

Step 1	Step 2	Step 3	Step 4	Step 5	
<ol style="list-style-type: none"> Public Mode Present a Master Credential to delete existing user credentials Private Mode Skip this step 	<ol style="list-style-type: none"> Present and hold a Master Credential in front of the card reader for 8 seconds -Flashing Yellow LED's 	<ol style="list-style-type: none"> Detach the Master Card right after three beeps -During RED LED blinking for 8 seconds 	<ol style="list-style-type: none"> Remove the Master Credential from the front of the card reader after hearing 3 short beeps -Flashing Red LED's for 8 seconds (Up to 20 Master Cards can be registered) 	<ol style="list-style-type: none"> Present the last Master Credential 2x to end Master Credential programming mode New Master Credential(s) successfully registered 	<p>※ Registering Override Credentials can only begin after completing Master Credential programming</p>

Change the Override Credential(s)

Step 1	Step 2	Step 3	Step 4	Step 5	Step 6
<ol style="list-style-type: none"> Public Mode Present a Master Credential to delete existing user credentials Private Mode Skip this step 	<ol style="list-style-type: none"> Present and hold a Master Credential in front of the card reader for 8 seconds -Flashing Yellow LED's 	<ol style="list-style-type: none"> Remove the Master Credential from the front of the card reader after hearing 3 short beeps -Wait for flashing Red LED's for 8 seconds before moving to next step 	<ol style="list-style-type: none"> Flashing Amber LED's for 8 seconds after short beep 	<ol style="list-style-type: none"> Present Override Credentials to the front of the card reader to register 	<ol style="list-style-type: none"> Present the last Override Credential 2x to end Override Credential programming mode New Override Credential(s) successfully registered

※ FCC statement

This device complies with Part 15 of the FCC Rules. Operation is subject to the following two conditions:

- (1) this device may not cause harmful interference, and
- (2) this device must accept any interference received, including interference that may cause undesired operation.

Caution: Changes or modifications not expressly approved by the party responsible for compliance could void the user's authority to operate the equipment.

※ This appliance and its antenna must not be co-located or operation in conjunction with any other antenna or transmitter.

This equipment should be installed and operated with minimum distance 20cm between the radiator & your body.

ASSA ABLOY is the global leader in door opening solutions, dedicated to satisfying end-user needs for security, safety and convenience

ELECTRONIC SECURITY HARDWARE

HES | Securitron

assaabloyesh.com | 800.626.7590 | 10027 S. 51st Street Phoenix, AZ 85044 USA

ASSA ABLOY