

# Sliding Door



Hager Companies offers a full line of high quality, durable sliding door hardware that is the perfect choice for any by-pass, bi-fold, interior wall-mount, decorative barn door and pocket door application your project requires. With Hager’s sliding door hardware, you can choose from hundreds of fully tested products, including jump proof box tracks, self-aligning wheel systems, complete sets and accessories. Just as beneficial, every Hager sliding door hardware product is designed and manufactured to support a broad range of size and weight requirements, and is specified by some of the world’s most demanding architects, designers and builders – meeting or exceeding ANSI requirements.

## Table of Contents

General Information .....	2	<b>Barn Door Hardware .....</b>	<b>47</b>
<b>By-Pass .....</b>	<b>3</b>	9400 Series .....	48-52
9514 & 9583 Packaged By-Pass Sets.....	4-5	Conestoga Barn Door Hardware Series .....	53-57
9614 & 9683 Packaged Sets .....	6-7	<b>Optional Components .....</b>	<b>59-63</b>
9673 & 9674 Packaged Sets .....	8-9		
9675 & 9676 Packaged Sets .....	10-11		
9110 & 9130 Packaged Sets .....	12-13		
9611 & 9612 Packaged Sets .....	14-15		
9875 Packaged Sets .....	16-17		
9885 & 9886 Packaged Sets .....	18-19		
<b>Bi-Fold .....</b>	<b>21</b>		
9570 Track .....	22-23		
9860 & 9861 Bi-Fold Sets .....	24-25		
9890 & 9891 Packaged Sets .....	26-27		
<b>Pocket Door Kits .....</b>	<b>29</b>		
9110 & 9130 Packaged Sets .....	30-31		
9678 Pocket Door Set.....	32-33		
9878 Packaged Sets .....	34-35		
9901 Series .....	36-37		
9628   9629   9630   9631 .....	38		
9850 .....	39		
Pocket Door Components .....	40-41		
<b>Wall-Mount Hardware .....</b>	<b>43</b>		
9710 .....	44-46		



## GENERAL INFORMATION

Pg #	Max Wgt Per Door	Pkgd Sets	Track	Parts Bag	Description
<b>By-Pass</b>					
4-5	60#	9514	9810	9814	Aluminum track & hardware for 3/4" & 1-3/8" thick doors.
4-5	60#	9583	9810	9400/9401 hangers	Aluminum track & hardware for 3/4" & 1-3/8" thick doors, for 3 doors.
6-7	60#	9614	9820	9540	Aluminum track with grooved fascia & hardware for 1-3/8" thick doors.
6-7	60#	9683	9820	9401 hangers	Aluminum track with grooved fascia & hardware for 1-3/8" thick doors.
8-9	125#	9673	9603	9679	Heavy duty aluminum box track with grooved fascia & hardware for 1-3/8" & 1-3/4" thick doors.
10-14	125#	9675	9602	9679	Heavy duty aluminum box track & hardware for 1-3/8" & 1-3/4" thick doors.
14-15	150#	9611	9821	9892	Aluminum double box track & hardware for 1-3/8" & 1-3/4" thick doors.
8-9	150#	9674	9603	9680	Heavy duty aluminum box track with grooved fascia & hardware for 1-3/8" & 1-3/4" thick doors.
10-11	150#	9676	9602	9680	Heavy duty aluminum box track & hardware for 1-3/8" & 1-3/4" thick doors.
12-13	175#	9110	9101	9109	Heavy duty aluminum I-beam track and hardware for 1" thick doors and up. *Must order 2 per by pass.*
14-15	250#	9612	9821	9893	Aluminum double box track & hardware for 1-3/8" & 1-3/4" thick doors.
16-17	250#	9875	9801	9827 hangers	Heavy duty aluminum double track & hardware for 1-3/8" and 1-3/4" thick doors.
18-19	250#	9885	9803	9827 hangers	Heavy duty aluminum double track with smooth fascia & hardware for 1-3/8" & 1-3/4" thick doors.
18-19	250#	9886	9803	9827 hangers	Heavy duty aluminum double track with smooth fascia & hardware for 1-3/8" & 1-3/4" thick doors.
30-31	275#	9130	9101	9129	Heavy duty aluminum I-beam track and hardware for 1" thick doors and up. *Must order 2 per by pass.*
<b>Bi-Fold Sets</b>					
22-23	50#	9570	9601	9569	Aluminum track & hardware for 1-1/8" & 1-3/4" thick doors.
24-25	125#	9860/9850	9821	9894	Heavy duty aluminum box track & hardware for 1-3/8" & 1-3/4" thick doors.
24-25	125#	9861	9821	9894	Heavy duty aluminum box track & hardware for 1-3/8" & 1-3/4" thick doors.
26-27	125#	9890/9891	9801	9827 & 9828	Heavy duty aluminum double track & hardware for 1-1/8" and 1-3/4" thick doors.
<b>Pocket Door Sets</b>					
32-33	125#	9678	9601	9632	Heavy duty aluminum box track & hardware for 1-3/8" & 1-3/4" thick doors.
34-35	150#	9678	9101	9633	Heavy duty aluminum box track & hardware for 1-3/8" & 1-3/4" thick doors.
30-31	175#	9110	9101	9109	Heavy duty aluminum I-beam track & hardware for 1" thick doors and up.
34-35	250#	9878	9801	9742	Heavy duty aluminum double track & hardware for 1-3/8" and 1-3/4" thick doors.
36-37	250#	9901	9821	9895	Extra heavy duty aluminum box track & hardware for 1-3/8" & 1-3/4" thick doors.
30-31	275#	9130	9101	9129	Heavy duty aluminum I-beam track & hardware for 1" thick doors and up.
<b>Pocket Door Frame Kits</b>			<b>All Pocket Door Framed Kits for 1-3/8" Thick Doors</b>		
38	75#	9631	9601	9605 hangers	Pocket door packaged sets for 3'0" wide 6'8" high door
38	75#	9628	9601	9606 hangers	Pocket door packaged sets for 3'0" wide 7'0" high door
38	75#	9629	9601	9606 hangers	Pocket door packaged sets for 3'0" wide 8'0" high door
38	75#	9630	9601	9606 hangers	Pocket door packaged sets for 3'0" wide 9'0" high door
39	250#	9850	9801	9827 hangers	Pocket door packaged sets for 4'0" wide 8'0" high door
39	250#	9850	9801	9827 hangers	Pocket door packaged sets for 4'0" wide 8'6" high door
<b>Wall Mount Sets</b>					
44-46	250#	9710	9703	9711	Heavy duty aluminum track & hardware for 1" & 1-3/4" thick doors.



# By-Pass



Hager offers a full-range of trouble-free, sturdy and quiet motion by-pass Sliding Door Hardware sets. Featuring heavy-duty aluminum tracks and a selection of decor complementing fascia designs, Hager's by-pass components and door hardware sets can be ordered for 2-, 3- and 4-door configurations to fit rough openings from 4 ft to 8 ft wide.

Hager's Sliding Door Hardware sets are built to last and simple to install. They support doors from 50 lb to 275 lb capacity and offer an ideal space-saving solution for closets, pantries, room-dividing doors, etc.

By-pass door hardware is available in kits, track, or individual components.





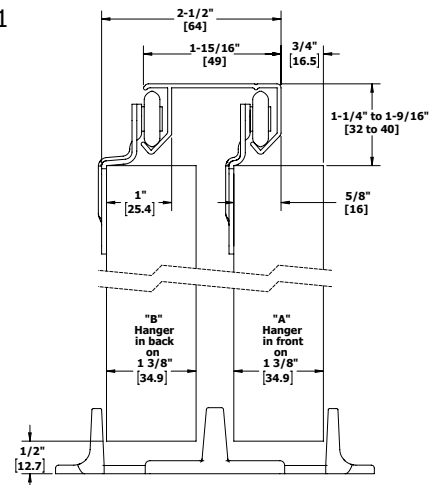
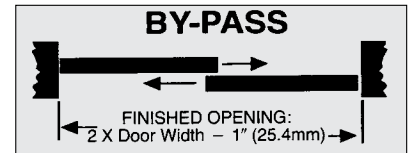
## BY-PASS - 9514 & 9583 PACKAGED BY-PASS SETS

### FEATURES

- Aluminum track with and hardware
- Conforms to ANSI A156.14
- Type: D8742

### SPECIFICATIONS

- For 3/4" - 1-3/8" (19 mm - 35 mm) thick doors
- Up to 60 lbs (27 kg) per door with single wheel hangers 9400 or 9401
- Up to 75 lbs (34 kg) per door with twin wheel hangers 9202 or 9203, sold separately
- Track is extruded aluminum jump-proof style with "V" shaped rails
- Hangers have 7/8" (22 mm) diameter wheels



*Interchanges with Stanley 40-3230, 40-3240, 40-3260, BP60/BP75-02 and Cox 12-200 Series.*

Part Number	Description
9514 Packaged Set (for two doors)	Includes one (1) 9810 track and one (1) 9814 parts bag
9514-48	By-Pass Set - For two 24" (610 mm) doors
9514-60	By-Pass Set - For two 30" (762 mm) doors
9514-72	By-Pass Set - For two 36" (914 mm) doors
9514-96	By-Pass Set - For two 48" (1219 mm) doors
9583 Packaged Set (for three doors)	Includes one (1) 9810 track, two (2) 9400 hangers, four (4) 9401 hangers, two (2) 9353 guides, and three (3) 2610 pulls
9583-96	By-Pass Set - For three 32" (813 mm) doors

Use the chart below to select the correct hanger offset combination for your application.

Side Mount Selection Chart				
Door Thickness	3/4" (19 mm)	1" (25.4 mm)	1-1/8" (29 mm)	1-3/8" (35 mm)
Front Hanger	B	B	A or B	A
Rear Hanger	A	A	Same as front	B
Door Gap	3/4"	1/2"	11/16"	9/16"
			<b>Notes:</b>	
	<b>Item #</b>	<b>Description</b>	Hanger is stamped "A" or "B" for easy identification	
Hanger A	9200	Single wheel hanger-offset A	For consideration for 9514, 9583, 9614, 9683, 9844 and 9845 By Pass packaged sets.	
Hanger B	9201	Single wheel hanger-offset B		
Hanger B*	9202	Twin wheel hanger-offset B		
Hanger A*	9203	Twin wheel hanger-offset A		
Hanger A	9400	Micro cam hanger-offset A		
Hanger B	9401	Micro cam hanger-offset B		
			<b>Hanger mount selection example:</b>	
			Door thickness: 1-1/8"      Door weight: 60 lbs	
			<b>Select single, twin or micro cam hanger</b>	
			Front hanger: 9400      Rear hanger: 9400	

\* For use with doors 60 -75 lbs., sold separately



## BY-PASS - 9514 & 9583 PACKAGED SET COMPONENTS



### 9810

#### Aluminum Track

Materials: Extruded aluminum  
 Gauge: 0.050" (1.3 mm) thick  
 Track: 1" x 2" (25 mm x 51 mm)  
 Lengths: 48" (1219 mm) to 144" (3658 mm)

Notes:

- For doors up to 75 lbs (34 kg)
- One piece track



### 9353

#### Adjustable Door Guide

Materials: High density polyethylene  
 Notes:

- Adjustable guide from 3/4" (19 mm) to 1-3/8" (35 mm)
- Included with 9841 parts bag



### 9814

#### Parts Bag

Includes two (2) 9400 hangers, two (2) 9401 hangers, two (2) 2610-US3 pulls, and one (1) 9353 guide



### 9841

#### Optional Parts Bag

• Includes four (4) 9401 hangers, two (2) 9865 pulls, one (1) 9351 guide  
 • For use with 1" - 1-1/8" thick doors



### 9400\* | 9401\*\*

#### Micro Adjust Hanger

Materials: Zinc plated steel with molded Celcon wheels  
 Gauge: 0.075" (2 mm)  
 Wheel: 7/8" (22 mm) diameter

Notes:

- Side mounted with precise cam adjustment
- For use on doors weighting up to 60 lbs (27 kg)
- For use with 9810, 9820, and 9840 track
- Hanger is stamped "A" or "B" for easy identification
- \* 9400 is A offset of 3/8" (9.5 mm)
- \*\* 9401 is B offset of 11/16" (17.5 mm)



### 9865

#### Flush Cup Pull

Overall Diameter: 1-31/32" (50 mm)  
 Finger Pull Diameter: 1-19/32" (41 mm)  
 Depth: 11/32" (9 mm)  
 Projection: 5/64" (2 mm)  
 Materials: Tan color ABS plastic

Notes:

- Built-in prong design eliminates the need for screws or brads



### 2610

#### Flush Cup Finger Pull

Overall Diameter: 31/32" (25 mm)  
 Finger Pull Diameter: 3/4" (19 mm)  
 Depth: 5/16" (8 mm)  
 Projection: 1/32" (.8 mm)  
 Materials: Solid brass  
 Finishes: US3, US4, US5, US10A, US15, US15A, US26, US26D, ABA

Notes:

- Built-in prong design eliminates the need for screws or brads



### 9351

#### Guide

Materials: High density polyethylene  
 Guide: 4-9/16" x 1" x 11-3/16" (116 mm x 25 mm x 46 mm)

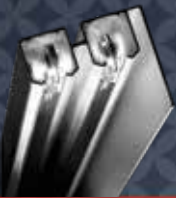
Notes:

- One piece fixed guide for 1-3/8" (35 mm) doors
- Included with 9841 parts bag

### Optional Components

9200   9201	Hanger
9202   9203	Hanger
2630	Pull
9909	Adjustable Guide
9354	3/4" Riser
9815	Bumper Stop
9880	Door Stop

For optional components see pages 59-63



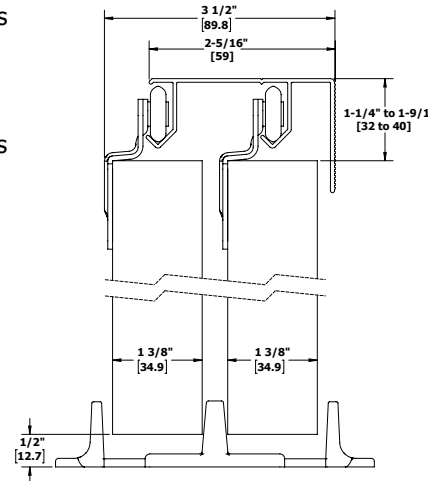
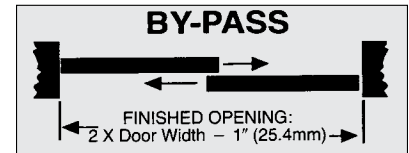
## BY-PASS - 9614 & 9683 PACKAGED SETS

### FEATURES

- Aluminum track with 1-3/4" (44 mm) fascia and hardware
- Conforms to ANSI A156.14
- Type: D8742

### SPECIFICATIONS

- For doors up to 1-3/8" (35 mm) thick
- Up to 60 lbs (27 kg) per door with single wheel 9201 or 9401 hangers
- Up to 75 lbs (34 kg) per door with twin wheel 9202 hangers
- Track is extruded aluminum jump-proof style with integral 1-3/4" (44 mm) fascia
- Hangers have one or two side mounted 7/8" (22 mm) diameter wheels
- Uses all B offset hangers
- Grooved fascia, ideal for painting



*Interchanges with Stanley 8139 track, BP75-06, 8400 Series sets, 40-3340 and Cox 12-400 Series.*

Part Number	Description
9614 Packaged Set (for two doors)	Includes one (1) 9820 track and one (1) 9540 parts bag: (4) 9401 hangers, two (2) 2610-US3 pulls, one (1) 9351 floor guide
9614-48	By-Pass Set - For two 24" (610 mm) door hangers, two (2) 2610 - US3
9614-60	By-Pass Set - For two 30" (762 mm) door pulls, one (1) 9351 floor guide
9614-72	By-Pass Set - For two 36" (914 mm) doors
9683 Series Set (for three doors)	Includes one (1) 9820 track and six (6) 9401 hangers, two (2) 9351 guides, and three (3) 2610 pulls
9683-96	By-Pass Set - For three 32" (813 mm) doors

Use the chart below to select the correct hanger offset combination for your application.

Side Mount Selection Chart				
Door Thickness	3/4" (19 mm)	1" (25.4 mm)	1-1/8" (29 mm)	1-3/8" (35 mm)
Front Hanger	B	B	A or B	A
Rear Hanger	A	A	Same as front	B
Door Gap	3/4"	1/2"	11/16"	9/16"
	<b>Item #</b>	<b>Description</b>	<b>Notes:</b>	
Hanger A	9200	Single wheel hanger-offset A	Hanger is stamped "A" or "B" for easy identification	
Hanger B	9201	Single wheel hanger-offset B	For consideration for 9514, 9583, 9614, 9683, 9844 and 9845 By-Pass packaged sets.	
Hanger B	9202	Twin wheel hanger-offset B	<b>Hanger mount selection example:</b>	
Hanger A	9203	Twin wheel hanger-offset A	Door thickness: 1-1/8"                      Door weight: 60 lbs	
Hanger A	9400	Micro cam hanger-offset A	<b>Select single, twin or micro cam hanger</b>	
Hanger B	9401	Micro cam hanger-offset B	Front hanger: 9400                      Rear hanger: 9400	



## BY-PASS - 9614 & 9683 TRACK COMPONENTS



### 9820 Aluminum Track with 1-3/4\" data-bbox="214 159 433 204"/>

Materials: Extruded aluminum  
Gauge: 0.050" (1.3 mm)  
Track: 1-3/4" x 3" (44 mm x 76 mm)  
Lengths: 48" (1219 mm) to 144" (3658 mm)

- Notes:
- For doors up to 75 lbs (34 kg)
  - For use on doors up to 1-3/8" (35 mm)
  - For use with 7/8" (22 mm) diameter hanger wheels
  - One piece track with built-in grooved fascia



### 9351 Guide

Materials: High density polyethylene  
Guide: 4-9/16" x 1" x 11-3/16" (116 mm x 25 mm x 46 mm)  
Notes: One piece fixed guide for 1-3/8" (35 mm) doors

### Optional Part Bags



### 9544 Parts Bag

Includes four (4) 9202 hangers, two (2) 2630-US3 pulls, and one (1) 9351 guide



### 9540 Parts Bag

Includes four (4) 9401 hangers, two (2) 2610-US3 pulls, and one (1) 9351 guide



### 9841 Parts Bag

Includes four (4) 9401 hangers, two (2) 9865 pulls, and one (1) 9351 guide



### 9401 "B" Offset Hanger Micro Adjust Hanger

Materials: Zinc plated steel with molded Celcon wheels  
Gauge: 0.075" (2 mm)  
Wheel: 7/8" (22 mm) diameter  
Notes:

- Side mounted with precise cam adjustment
- For use on doors weighting up to 60 lbs (27 kg)
- For use with 9810, 9820, and 9840 track



### 9842 Parts Bag

Includes four (4) 9401 hangers, two (2) 2630-US3 pulls, and one (1) 9351 guide



### 9843 Parts Bag

Includes four (4) 9202 hangers, two (2) 9865 pulls, and one (1) 9351 guide



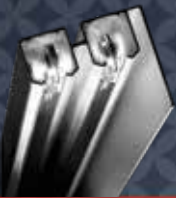
### 2610 Flush Cup Finger Pull

Overall Diameter: 31/32" (25 mm)  
Finger Pull Diameter: 3/4" (19 mm)  
Depth: 5/16" (8 mm)  
Projection: 1/32" (.8 mm)  
Materials: Solid brass  
Finishes: US3  
Notes: Built-in prong design eliminates the need for screws or brads

### Optional Components

9200   9201	Hanger
9202   9203	Hanger
2630	Pull
9865	Pull
9909	Adjustable Guide
9353	Adjustable Guide
9354	3/4" Riser
9815	Bumper Stop
9880	Door Stop

For optional components see pages 59-63



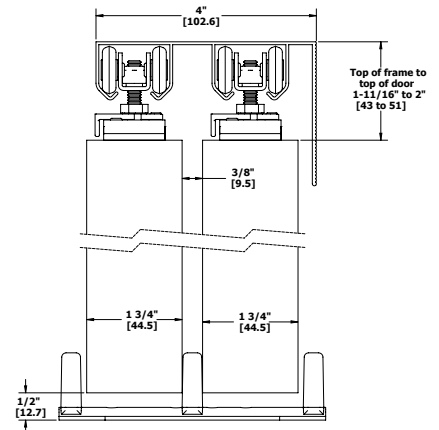
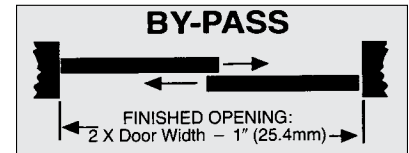
## BY-PASS - 9673 & 9674 PACKAGED SETS

### FEATURES

- Heavy duty aluminum track with 2-5/8" (66 mm) Built-In Grooved Fascia and Hardware
- Conforms to ANSI A156.14
- Type: D8751, D8752

### SPECIFICATIONS

- For doors 1-3/8" - 1-3/4" (35 mm - 44 mm) thick
- 9673 packaged sets for up to 125 lbs (57 kg) per door
- 9674 packaged sets for up to 150 lbs (68 kg) per door
- Track is extruded aluminum jump-proof style with "V" shaped rails and integral 2-5/8" (66 mm) fascia
- Hangers have four (4) 7/8" (22 mm) diameter wheels
- Integral 2-5/8" grooved fascia
- Grooved fascia, ideal for painting



*Interchanges with Stanley S1700F Series/BP150F; Johnson 134F/138F; and Lawrence F581 track, HDF520 Series sets.*

Part Number	Description
9673 Packaged Set	
Includes one (1) 9603 track and one (1) 9679 parts bag: four (4) 9605 hangers, four (4) 9610 plates, and one (1) 9909 guide	
For doors up to 125 lbs (57 kg)	
9673-48	By-Pass Set - For two 24" (610 mm) doors
9673-60	By-Pass Set - For two 30" (762 mm) doors
9673-72	By-Pass Set - For two 36" (914 mm) doors
9673-96	By-Pass Set - For two 48" (1219 mm) doors
9674 Series Set	
Includes one (1) 9603 Packaged Set track and one (1) 9680 parts bag: four (4) 9606 hangers, four (4) 9610 plates, and one (1) 9909 guide	
For doors up to 150 lbs (68 kg)	
9674-48	By-Pass Set - For two 24" (610 mm) door
9674-60	By-Pass Set - For two 30" (762 mm) door
9674-72	By-Pass Set - For two 36" (914 mm) door
9674-96	By-Pass Set - For two 48" (1219 mm) door





## BY-PASS - 9673 & 9674 TRACK COMPONENTS



### 9603

#### Heavy Duty Aluminum Double Box Track

Materials: Extruded aluminum  
 Gauge: 0.050" (1.3 mm)  
 Track: 1-1/16" x 4" (27 mm x 102 mm)  
 Lengths: 48" (1219 mm) to 144" (3658 mm)

- Notes:
- Grooved fascia for painting
  - Jump proof double twin channel design
  - One piece track with built-in grooved fascia



### 9909

#### Adjustable Guide

Materials: Steel with bright zinc finish  
 Posts: Molded Celcon/Nylon  
 Gauge: 0.060" (1.5 mm)  
 Guide: 4-7/8" x 1-5/8" x 1-3/16" (124 mm x 41 mm x 30 mm)  
 Notes: For doors 3/4" to 1-3/4" (19 mm to 44 mm) thick and up to 275 lbs (125 kg)



### 9679

#### Parts Bag

For 125 lbs (57 kg) per door - Includes four (4) 9605 hangers with quick release top mount plate, four (4) 9610 plates, and one (1) 9909 guide



### 9680

#### Parts Bag

For 150 lbs (68 kg) doors - Includes four (4) 9606 ball bearing hangers, four (4) 9610 plates, and one (1) 9909 guide  
 Note: Up to 125 lbs (57 kg) per door



### 9605

#### 4-Wheel Hanger

For 75 lbs (34 kg) doors  
 Materials: Steel with brass-tone dichromate finish  
 Wheel: 7/8" (22 mm) diameter  
 Notes:
 

- Wheels are self aligning to allow consistent contact with track
- Pre-lubricated Celcon wheels
- Up to 125 lbs (57 kg) per door
- Use in conjunction with 9601, 9602 or 9603 track



### 9606

#### 4-Wheel Ball Bearing Hanger

For 75 lbs (34 kg) doors  
 Materials: Steel with brass-tone dichromate finish  
 Wheel: 7/8" (22 mm) diameter  
 Notes:
 

- Wheels are self aligning to allow consistent contact with track
- Pre-lubricated Celcon wheels mounted on steel ball bearing shafts
- For doors up to 150 lbs (68 kg)
- Used in conjunction with 9607, 9608 or 9610 top door plate and 9599, 9601 or 9602 track



### 9610

#### Replacement Top Mount Plate

Materials: Bright zinc plated steel  
 Gauge: 1/8" (3 mm)  
 Size: 1-3/8" (35 mm) x 2-13/16" (72 mm)  
 Notes: Replacement for four wheel hangers 9605, 9606, 9575, 9824, 9825 and 9827

### Optional Components

2610	Pull
2630	Pull
9865	Pull
9610	Top Mount Plate
9351	Adjustable Guide
9353	Adjustable Guide
9354	3/4" Riser
9815	Bumper Stop
9880	Door Stop

For optional components see pages 59-63

## BY-PASS - 9675 & 9676 PACKAGED SETS

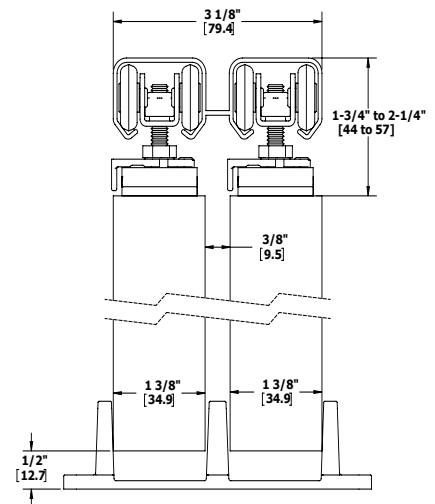
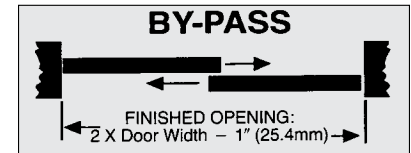
### FEATURES

- Heavy duty aluminum double box track and hardware
- Conforms to ANSI A156.14
- Type: D8731, D8741, D8751

### SPECIFICATIONS

- For doors 1-3/8" - 1-3/4" (35 mm - 44 mm) thick
- Up to 100 lbs (45 kg) with 9572 hangers
- 9675 packaged sets for up to 125 lbs (57 kg) per door
- 9676 packaged sets for up to 150 lbs (68 kg) per door
- Track is extruded aluminum jump-proof style with "V" shaped rails
- Hangers have four (4) 7/8" (22 mm) diameter wheels

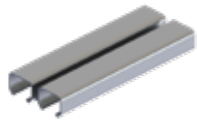
Part Number	Description
9675 Packaged Set	Includes one (1) 9602 track and one (1) 9679 parts bag: four (4) 9605 hangers, four (4) 9609 plates, and one (1) 9909 guide For doors up to 125 lbs (57 kg) per door
9675-48	By-Pass Set - For two 24" (610 mm) doors
9675-60	By-Pass Set - For two 30" (762 mm) doors
9675-72	By-Pass Set - For two 36" (914 mm) doors
9675-96	By-Pass Set - For two 48" (1219 mm) doors
9676 Packaged Set	Includes one (1) 9602 track and one (1) 9680 parts bag: four (4) 9606 hangers, four (4) 9609 plates, and one (1) 9909 guide For doors up to 150 lbs (68 kg) per door
9676-48	By-Pass Set - For two 24" (610 mm) door
9676-60	By-Pass Set - For two 30" (762 mm) door
9676-72	By-Pass Set - For two 36" (914 mm) door
9676-96	By-Pass Set - For two 48" (1219 mm) door



*Interchanges with Stanley 1755, 40-3664, 40-3855/BP150; Johnson 134F/138F; Grant 7000 Series, Cox 15-220 Series; and Lawrence 581 track, HD520 hardware.*



## BY-PASS - 9675 & 9676 TRACK COMPONENTS



### 9602 Heavy Duty Aluminum Double Box Track

Materials: Extruded aluminum  
 Gauge: 0.050" (1.3 mm) thick  
 Track: 1-1/16" x 3-1/8"  
 (27 mm x 79 mm)  
 Lengths: 46" (1168 mm) to 142"  
 (3607 mm)  
 Notes: Jump proof double twin  
 channel design



### 9909 Adjustable Guide

Materials: Steel with bright zinc finish  
 Posts: Molded Celcon/Nylon  
 Gauge: 0.060" (1.5 mm)  
 Guide: 4-7/8" x 1-5/8" x 1-3/16"  
 (124 mm x 41 mm x 30 mm)  
 Notes: For doors 3/4" to 1-3/4"  
 (19 mm to 44 mm) thick and  
 up to 275 lbs (125 kg)



### 9679 Parts Bag

Includes four (4) 9605 hangers with quick  
 release top mount plate, and one (1)  
 9909 guide  
 Note: Up to 125 lbs (57 kg) per door



### 9680 Parts Bag

For 150 lbs (68 kg) doors - Includes four  
 (4) 9606 ball bearing hangers, four (4)  
 9610 plates, and one (1) 9909 guide  
 Note: Up to 125 lbs (57 kg) per door



### 9605 4-Wheel Hanger

For 75 lbs (34 kg) doors  
 Materials: Steel with brass-tone  
 dichromate finish  
 Wheel: 7/8" (22 mm) diameter  
 Notes:
 

- Wheels are self aligning to  
 allow consistent contact  
 with track
- Pre-lubricated Celcon wheels
- Up to 75 lbs (34 kg) per door
- Use in conjunction with 9601,  
 9602 or 9603 track



### 9606 4-Wheel Ball Bearing Hanger

For 75 lbs (34 kg) doors  
 Materials: Steel with brass-tone  
 dichromate finish  
 Wheel: 7/8" (22 mm) diameter  
 Notes:
 

- Wheels are self aligning to  
 allow consistent contact  
 with track
- Pre-lubricated Celcon  
 wheels mounted on steel  
 ball bearing shafts
- For doors up to 75 lbs (34 kg)
- Used in conjunction with  
 9607, 9608 or 9610 top  
 door plate and 9599, 9601  
 or 9602 track



### 9610 Replacement Top Mount Plate

Materials: Bright zinc plated steel  
 Gauge: 1/8" (3 mm)  
 Size: 1-3/8" (35 mm) x 2-13/16"  
 (72 mm)  
 Notes: Replacement for four  
 wheel hangers 9605, 9606,  
 9575, 9824, 9825 and 9827

### Optional Components

9709	Fascia
2610	Pull
2630	Pull
9865	Pull
9610	Top Mount Plate
9351	Adjustable Guide
9353	Adjustable Guide
9354	3/4" Riser
9815	Bumper Stop
9880	Door Stop

For optional components see pages 59-63

## BY-PASS - 9110 & 9130 PACKAGED SETS

### FEATURES

- Heavy duty aluminum I-beam track and hardware
- Conforms to ANSI A156.14/Type: D8731

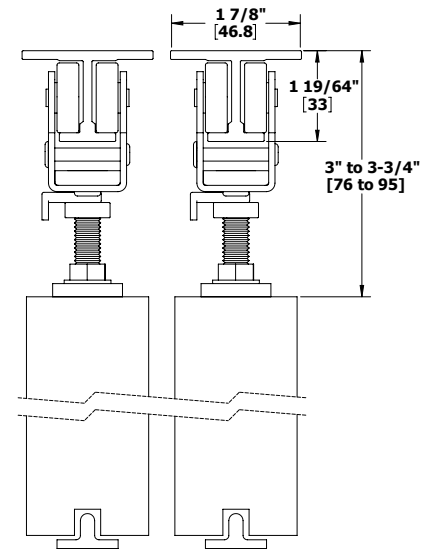
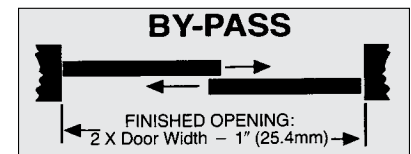
### SPECIFICATIONS

- For doors 1" - 1-3/4" (25 mm - 45 mm) thick
- 9110 Series for doors weighing up to 175 lbs (79.5 kg) per door
- 9130 Series for doors weighing up to 275 lbs (124.7 kg) per door
- Track is extruded aluminum jump-proof style with "I" shaped rails
- Hangers have 1" (25 mm) diameter wheels with steel ball bearings
- Order two sets per opening per by pass

Part Number	Description
<b>9110 Series Set</b>	
Includes one (1) 9101 track and one (1) 9109 parts bag: two (2) 9102 hangers, and one (1) 9115 floor guide	
For doors up to 175 lbs (79.5 kg) per door	
9110-60	5' (1524 mm) By-Pass Set - For one 2'6" (762 mm) door
9110-72	6' (1839 mm) By-Pass Set - For one 3'0" (914 mm) door
9110-84	7' (2134 mm) By-Pass Set - For one 3'6" (1067 mm) door
9110-96	8' (2438 mm) By-Pass Set - For one 4'0" (1219 mm) door
9110-120	10' (3048 mm) By-Pass Set - For one 5'0" (1529 mm) door
9110-144	12' (3658 mm) By-Pass Set - For one 6'0" (1829 mm) door
<b>9130 Series Set</b>	
Includes one (1) 9101 track and one (1) 9129 parts bag: two (2) 9105 hangers, and one (1) 9115 floor guide	
For doors up to 275 lbs (125 kg)	
9130-60	5' (1524 mm) By-Pass Set - For one 2'6" (762 mm) door
9130-72	6' (1839 mm) By-Pass Set - For one 3'0" (914 mm) door
9130-84	7' (2134 mm) By-Pass Set - For one 3'6" (1067 mm) door
9130-96	8' (2438 mm) By-Pass Set - For one 4'0" (1219 mm) door
9130-120	10' (3048 mm) By-Pass Set - For one 5'0" (1529 mm) door
9130-132	11' (3353 mm) By-Pass Set - For one 5'6" (1676 mm) door
9130-144	12' (3658 mm) By-Pass Set - For one 6'0" (1829 mm) door

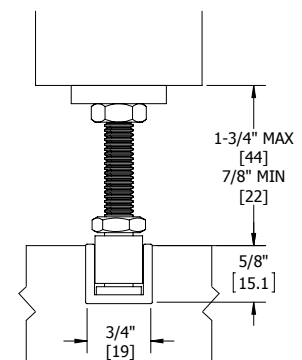
**TRACKS** - Two sets required for by-pass opening - 0.125" (3 mm) thick aluminum

Part Number	Description
Tracks for use with 9110 Series and 9130 Series	
9101-72	72" (1829 mm) Aluminum I-Beam Track
9101-84	84" (2134 mm) Aluminum I-Beam Track
9101-96	96" (2438 mm) Aluminum I-Beam Track
9101-120	120" (3048 mm) Aluminum I-Beam Track
9101-144	144" (3658 mm) Aluminum I-Beam Track
9101-192	192" (4877 mm) Aluminum I-Beam Track



*Interchanges with Grant 1210/1230 Series*

Optional Bottom Track  
9121 - 9122



Installation note: Clearance between door bottom and top of 9122 track must be 7/8" (22 mm) minimum to 1-3/4" (44 mm) maximum.



## BY-PASS - 9110 & 9130 TRACK COMPONENTS



### 9101

#### I Beam Track

Materials: Extruded aluminum  
 Gauge: 0.125" (3 mm)  
 Lengths: 72" (1829 mm) to 192" (4877 mm)  
 Notes: Mounting holes are prepunched for ease of installation



### 9129

#### Parts Bag

Includes two (2) 9105 4-wheel hangers and one (1) 9115 floor guide



### 9109

#### Parts Bag

Includes two (2) 9102 2-wheel hangers and one (1) 9115 floor guide



### 9105

#### 4 Wheel Hanger

Materials: Zinc plated steel  
 Wheels: Nylon with steel ball bearings  
 Hanger: 4" x 2" x 1-3/4" (102 mm x 51 x 45 mm)  
 Bolt: 3/8" x 2-5/16" (10 mm x 59 mm)  
 Top Plate: 1" x 3-1/2" x 3/16" (25.4 mm x 89 mm x 5 mm)  
 Notes:
 

- Use with 9101 track, with doors weighing up to 275 lbs (125 kg)
- Four wheel hanger is self-aligning to allow consistent contact with track



### 9102

#### 2 Wheel Hanger

Materials: Zinc plated steel  
 Wheels: Nylon with steel ball bearings  
 Hanger: 1-13/16" x 2" x 1-1/8" (46 mm x 51 mm x 29 mm)  
 Bolt: 3/8" x 2-5/16" (10 mm x 59 mm) (Bolt not same as 9105)  
 Top Plate: 1" x 3-1/2" x 3/16" (25 mm x 89 mm x 5 mm)  
 Notes: Use with 9101 track, with doors weighing up to 175 lbs (79 kg)



### 9115

#### Bottom Door Guide

Materials: Die cast zinc aluminum alloy  
 Guide: 7/8" x 3/4" x 3" (22 mm x 19 mm x 76 mm)  
 Notes: Door bottom prep requires 1/4" (6 mm) wide kerf and 9/16" (14 mm) depth

### Optional Components

9111	Fixed Bottom Door Guide
9113	Door Stop
9114	Bottom Guide Rail
9121	Bottom Door Guide
9122	Bottom Guide Channel
9909	Adjustable Guide

For optional components see pages 59-63

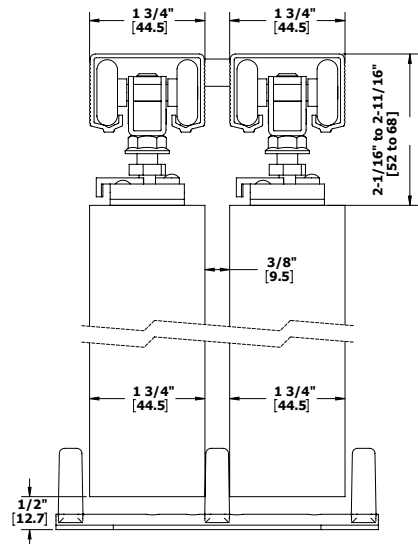
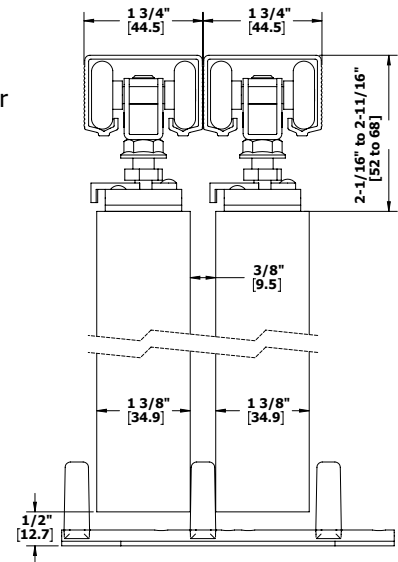
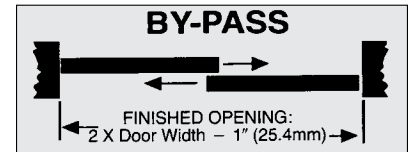
## BY-PASS - 9611 & 9612 PACKAGED SETS

### FEATURES

- Heavy duty aluminum box double track and hardware
- Conforms to ANSI A156.14
- Type: D8731, D8751

### SPECIFICATIONS

- For doors 1-3/8" (35 mm) thick doors (top figure) - no spacer kit required
- For doors 1-3/4" (45 mm) thick with tracks spaced 3/8" (10 mm) apart using 9573 (bottom figure)
- 9611 Packaged Sets for doors weighing up to 150 lbs (68 kg) per door
- 9612 Packaged Sets for doors weighing up to 250 lbs (113 kg) per door
- Quick release hangers allow easy door hanging and removal
- Hangers have 1" (25 mm) diameter wheels
- Universal extruded aluminum track interchanges with Stanley and Johnson hangers and track

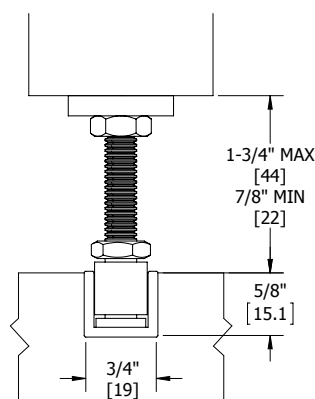


Interchanges with Stanley 125/250 Series and Johnson 100 Series

Part Number	Description
9611 Packaged Set Includes two (2) 9821 tracks and one (1) 9892 parts bag: four (4) 9824 hangers, one (1) 9909 guide, and one (1) 9573 spacer For doors up to 150 lbs (68 kg) per door	
9611-60	By-Pass Set - For two 30" (762 mm) doors
9611-72	By-Pass Set - For two 36" (914 mm) doors
9611-96	By-Pass Set - For two 48" (1219 mm) doors
9612 Series Set Includes two (2) 9821 tracks and one (1) 9893 parts bag: four (4) 9825 hangers, one (1) 9909 guide, and one (1) 9573 spacer For doors up to 250 lbs (113 kg) per door	
9612-60	By-Pass Set - For two 30" (762 mm) door
9612-72	By-Pass Set - For two 36" (914 mm) door
9612-96	By-Pass Set - For two 48" (1219 mm) door

Optional Bottom Track  
9121 - 9122

Installation note: Clearance between door bottom and top of 9122 track must be 7/8" (22 mm) minimum to 1-3/4" (44 mm) maximum.





## BY-PASS - 9611 & 9612 TRACK COMPONENTS



### 9821

#### Aluminum Box Track

- Materials: Extruded aluminum  
 Gauge: 0.06" (2 mm) thick  
 Track: 1-5/8" x 1-1/16"  
 (41 mm x 27 mm)  
 Lengths: 59" (1499 mm) to 144"  
 (3658 mm)  
 Notes:
  - Jump proof twin channel design
  - Two-piece required for by-pass



### 9573

#### Celcon Plastic Spacer Kit

- Materials: Celcon plastic  
 Notes:
  - Includes screws
  - Properly spaces two single tracks for 1-3/4" (44 mm) doors



### 9892

#### Parts Bag

- Includes four (4) 9824 4-wheel hangers with quick release top mount plate, one (1) 9909 guide, and one (1) 9573 spacer kit  
 Note: Up to 150 lbs (68 kg) per door



### 9893

#### Parts Bag

- Includes four (4) 9825 4-wheel ball bearing hangers with quick release top mount plate, one (1) 9909 guide, and one (1) 9573 spacer kit  
 Note: Up to 250 lbs per door



### 9824

#### 4 Wheel Hanger with Quick Release Top Mount Plate

- Materials: Zinc plated steel  
 Wheels: Self aligning to allow consistent contact with track  
 Wheel: 1" (25 mm) diameter  
 Notes:
  - Pre-lubricated Celcon wheels
  - Up to 150 lbs (68kg) per door
  - For use with 9821 track
  - Quick release feature allows easy door hanging and removal



### 9825

#### 4 Wheel Ball Bearing Hanger with Quick Release Top Mount Plate

- Materials: Zinc plated steel  
 Wheels: Self aligning to allow consistent contact with track with steel ball bearings  
 Wheel: 1" (25 mm) diameter  
 Notes:
  - Pre-lubricated Celcon wheels
  - Up to 250 lbs (113 kg) per door
  - For use with 9821 track
  - Quick release feature allows easy door hanging and removal



### 9909

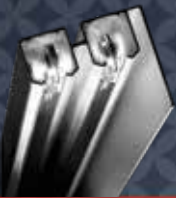
#### Adjustable Guide

- Materials: Steel with bright zinc finish  
 Posts: Molded Celcon/Nylon  
 Gauge: 0.060" (1.5 mm)  
 Guide: 4-7/8" x 1-5/8" x 1-3/16"  
 (124 mm x 41 mm x 30 mm)  
 Notes: For doors 3/4" to 1-3/4"  
 (19 mm to 44 mm) thick and up to 275 lbs (125 kg)

### Optional Components

9709	Fascia
2610	Pull
2630	Pull
9865	Pull
9121	Bottom Door Guide
9122	Bottom Guide Channel
9351	Adjustable Guide
9353	Adjustable Guide
9354	3/4" Riser
9815	Bumper Stop
9880	Door Stop

For optional components see pages 59-63



## BY-PASS - 9875 PACKAGED SETS

### FEATURES

- Heavy duty aluminum box double track and hardware
- Conforms to ANSI A156.14
- Type: D8731, D8751

### SPECIFICATIONS

- For doors 1-3/8" - 1-3/4" (35 mm - 44 mm) thick (top figure)
- For doors 1-3/4" (44 mm) thick, tracks are spaced 3/8" (10 mm) apart using 9574 (bottom figure)
- Up to 250 lbs (113 kg) per panel
- Track is extruded aluminum jump-proof style with "V" shaped rails
- Hangers have four (4) 1-1/4" (32 mm) diameter wheels

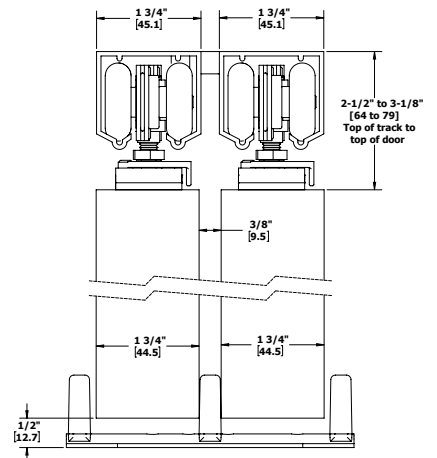
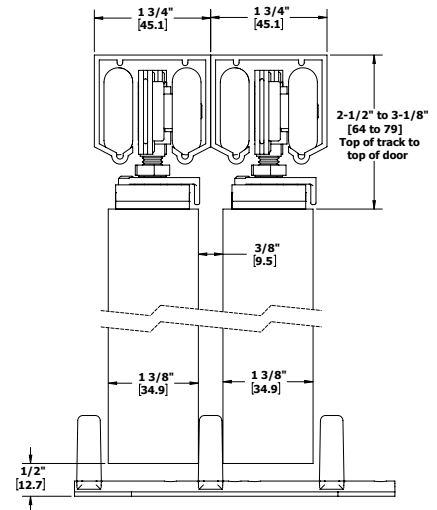
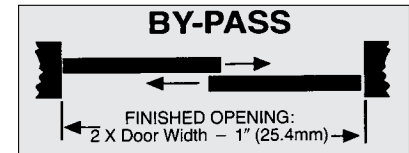
Part Number	Description
9875 Series Set - Packaged set for doors up to 1-3/4" (44 mm) thick Includes two (2) 9801 tracks, four (4) 9827 hangers, one (1) 9574 spacer, and one (1) 9909 guide	
9875-48	By-Pass Set - 4' (1219 mm) opening for two doors
9875-60	By-Pass Set - 5' (1524 mm) opening for two doors
9875-72	By-Pass Set - 6' (1829) opening for two doors
9875-96	By-Pass Set - 8' (2438 mm) opening for two doors

### TRACKS - 0.075" (1.9 mm) thick aluminum

Part Number	Description
Tracks for use with 9875 Series	
9801-72	72" (1829 mm) Aluminum Box Track
9801-96	96" (2438 mm) Aluminum Box Track
9801-120	120" (3048 mm) Aluminum Box Track
9801-144	144" (3658 mm) Aluminum Box Track
9801-192	192" (4877 mm) Aluminum Box Track

### FASCIA - 2-3/4" (70 mm) high with 5/8" (16 mm) lip

Part Number	Description
9809-72	72" (1829 mm) 3-7/8" (98 mm) Aluminum Fascia
9809-96	96" (2438 mm) 3-7/8" (98 mm) Aluminum Fascia



Interchanges with Stanley 57/58.







## BY-PASS - 9875 TRACK COMPONENTS



### 9801

#### Heavy Duty Aluminum Box Track

- Material: Extruded aluminum  
 Gauge: 0.075" (1.9 mm)  
 Track: 1-5/8" x 1-3/4"  
 (41 mm x 44 mm)  
 Lengths: 72" (1829 mm) to 192"  
 (4877 mm)  
 Notes:
  - For doors up to 250 lbs (113 kg)
  - Jump proof twin channel design



### 9909

#### Adjustable Guide

- Materials: Steel with bright zinc  
 Posts: Molded Celcon/Nylon  
 Gauge: 0.060" (1.5 mm)  
 Guide: 4-7/8" x 1-5/8" x 1-3/16"  
 (124 mm x 41 mm x 30 mm)  
 Notes: For doors 3/4" to 1-3/4"  
 (19 to 44 mm) thick and  
 up to 275 lbs (125 kg)



### 9809

#### Aluminum Fascia

- Materials: Extruded aluminum  
 Gauge: 0.072" (1.8 mm)  
 Lip: 1-3/4" (44 mm)  
 Fascia: 3-7/8" (98 mm)  
 Lengths: 72" (1829 mm) and  
 96" (2438 mm) lengths  
 Notes:
  - Grooved fascia for painting
  - Pre-punched holes for easy installation



### 9574

#### Track Spacer Kit

- Materials: Celcon plastic  
 Notes:
  - Includes screws
  - Properly spaces two single tracks for 1-3/4" (44 mm) doors
  - For use with 9801 track



### 9827

#### Four Wheel Ball Bearing Hanger

- Materials: Zinc plated steel  
 Wheels: Self aligning to allow consistent contact with track  
 Wheel: 1-1/4" (32 mm) diameter  
 Notes:
  - For doors up to 250 lbs (113 kg)
  - Pre-lubricated Celcon wheels on steel shafts with steel ball bearings
  - Ball bearing axles
  - For use with 9801 Track

### Optional Components

- |      |                             |
|------|-----------------------------|
| 330D | Pocket Door Latch           |
| 330L | Pocket Door Privacy Latch   |
| 330M | Pocket Door Privacy Latch   |
| 2630 | Flush Cup Pull              |
| 9881 | Bumper                      |
| 9883 | Two Piece Pocket Door Guide |
| 9884 | Pocket Door Edge Pull       |
| 9815 | Bumper Stop                 |
| 9884 | Pocket Edge Pull            |
| 9889 | Non-Adjustable Floor Guide  |

For optional components see pages 59-63



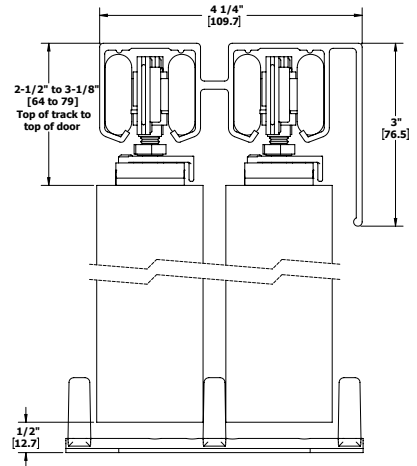
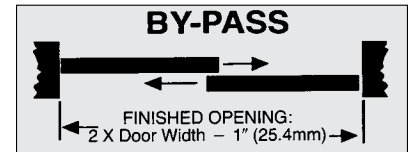
## BY-PASS - 9885 & 9886 PACKAGED SETS

### FEATURES

- Heavy duty aluminum double box track with 3-1/2" (89 mm) smooth fascia and hardware
- Conforms to ANSI A156.14
- Type: D8731, D8751

### SPECIFICATIONS

- For doors 1-3/8" - 1-3/4" (35 mm - 44 mm) thick
- Up to 250 lbs (113 kg) per door
- Track is extruded aluminum jump-proof style with "V" shaped rails and integral 3-1/2" (88 mm) fascia
- Integral 3-1/2" (88 mm) smooth fascia
- Smooth fascia mount to be accompanied by decorative trim
- Hangers have four (4) 1-1/4" (32 mm) diameter wheels
- Smooth finish fascia



Part Number	Description
9885 Packaged Set for two doors up to 250 lbs. (117 kg.) each Includes one (1) 9803 track, four (4) 9827 hangers, one (1) 9909 guide, and one (1) 9880 bumper stop	
9885-48	By-Pass Set - 4' (1219 mm) opening for two doors
9885-60	By-Pass Set - 5' (1524 mm) opening for two doors
9885-72	By-Pass Set - 6' (1829 mm) opening for two doors
9885-96	By-Pass Set - 8' (2438 mm) opening for two doors
9886 Packaged Set for four doors up to 250 lbs. (113 kg.) each Includes eight (8) 9827 hangers, and one (1) 9880 door stop, and two (2) 9909 guide	
9886-96	By-Pass Set - 8' (2438 mm) opening for four doors

### TRACKS - 0.06" (1.5 mm) thick aluminum

Part Number	Description
Tracks for use with 9800 Series	
9821-59	59" (1499 mm) Heavy Duty Aluminum Box Track
9821-71	71" (1803 mm) Heavy Duty Aluminum Box Track
9821-96	96" (2438 mm) Heavy Duty Aluminum Box Track
9821-144	144" (3658 mm) Heavy Duty Aluminum Box Track



## BY-PASS - 9885 & 9886 TRACK COMPONENTS



### 9803 Heavy Duty Aluminum Double Box Track with 3-1/2" (89 mm) Smooth Fascia

Materials: Extruded aluminum  
Gauge: 0.075" (1.9 mm) thick  
Track: 3-1/2" x 4-1/2"  
(89 mm x 114 mm)  
Lengths: 48" (1219 mm) to 144"  
(3658 mm)

- Notes:
- Up to 250 lbs (113 kg) per door
  - Jump proof twin channel design
  - One piece track with built-in smooth fascia
  - Smooth fascia meant to be accompanied by decorative trim
  - Hager does not offer decorative trim



### 9909 Adjustable Guide

Materials: Steel with bright zinc  
Posts: Molded Celcon/Nylon  
Gauge: 0.060" (1.5 mm)  
Guide: 4-7/8" x 1-5/8" x 1-3/16"  
(124 mm x 41 mm x 30 mm)  
Notes: For doors 3/4" to 1-3/4"  
(19 mm to 44 mm) thick and  
up to 275 lbs (125 kg)



### 9827 Four Wheel Ball Bearing Hanger

Materials: Zinc plated steel  
Wheels: Self aligning to allow  
consistent contact with track  
Wheel: 1-1/4" (32 mm) diameter  
Notes:

- For doors up to 250 lbs (113 kg)
- Pre-lubricated Celcon wheels on steel shafts with steel ball bearings
- Ball bearing axles
- For use with 9801 track



### 9880 Door Stop

Materials: Zinc plated steel and rubber  
Gauge: 0.090" (2.3 mm)  
Stop: 1-1/4" x 1-1/4" x 7/8"  
(32 mm x 32 mm x 22 mm)  
Notes:

- For doors up to 175 lbs (79 kg)
- Keeps rear door pull exposed
- Mounts on door
- Not included in sets

### Optional Components

2610	Pull
2630	Pull
9865	Pull
9351	Adjustable Guide
9353	Adjustable Guide
9354	3/4" Riser
9815	Bumper Stop
9880	Door Stop
9268	By-Pass Door Keyed Lock
9900	Rev. Side Mount Bracket

For optional components see pages 59-63



# Bi-Fold



Hager Companies Bi-Fold (by-fold) door hardware is, the smoother the operation of your doors will be—over the lifetime of the installation. Contractors, specification writers and architects insist on Hager's hardware sets and components to ensure trouble-free installation and reliable performance.

Hager offers a wide range of classic Bi-Fold door hardware sets featuring heavy-duty aluminum tracks in 2- and 4-door configurations. Our tracks accommodate rough openings from three to eight feet and support doors up to 125 lbs.



## BI-FOLD - 9570 TRACK

### FEATURES

- Standard duty aluminum box track and hardware
- Conforms to ANSI A156.14
- Type: D8621, D8642, D8652, D8662

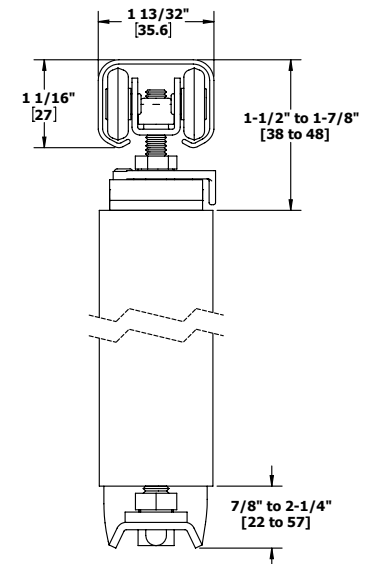
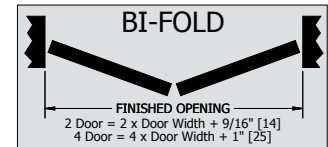
### SPECIFICATIONS

- For doors 1-1/8" (28.6 mm - 44 mm) to 1-3/4" (44 mm) thick
- Up to 50 lbs (57 kg) per panel bi-fold
- Up to 30 lbs (34 kg) per panel multi-fold
- Track is extruded aluminum jump-proof style with "V" shaped rails
- Hangers have four 7/8" (22 mm) diameter wheels
- Top and bottom pivots are heavy duty with solid brass bottom socket assembly for smooth, long lasting operation
- Note: Loose pin full mortise hinges 1741/1279 are recommended – not included (3 required for 9162, 6 required for 9164)

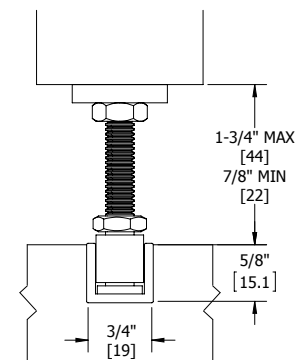
Part Number	Description
9570 Series Set - For two doors Includes one (1) 9601 track and one (1) 9571 parts bag	
9570-36	Bi-Fold Set - 3' (914 mm) opening for two 18" (457 mm) doors
9570 Series Set - For four doors Includes one (1) 9601 track and two (2) 9571 parts bag	
9570-48	Bi-Fold Set - 4' (1219 mm) opening for four 12" (305 mm) doors
9570-60	Bi-Fold Set - 5' (1524 mm) opening for four 15" (381 mm) doors
9570-72	Bi-Fold Set - 6' (1829 mm) opening for four 18" (457 mm) doors
9570-96	Bi-Fold Set - 8' (2438 mm) opening for four 24" (610 mm) doors

### TRACKS - 0.050" (1.3 mm) thick aluminum

Part Number	Description
Tracks for use with 9570 Series	
9601-35	35" (889 mm) Aluminum Box Track
9601-47	47" (1194 mm) Aluminum Box Track
9601-59	59" (1499 mm) Aluminum Box Track
9601-63	63" (1600 mm) Aluminum Box Track
9601-71	71" (1803 mm) Aluminum Box Track
9601-96	96" (2438 mm) Aluminum Box Track
9601-120	120" (3048 mm) Aluminum Box Track
9601-144	144" (3658 mm) Aluminum Box Track



Optional Bottom Track  
9121 - 9122



Installation note: Clearance between door bottom and top of 9122 track must be 7/8" (22 mm) minimum to 1-3/4" (44 mm) maximum.



## BI-FOLD - 9570 TRACK COMPONENTS



### 9601

#### Aluminum Box Track

- Materials: Extruded aluminum  
 Gauge: 0.050" (1.3 mm)  
 Track: 1-1/16" x 1-3/8"  
 (27 mm x 35 mm)  
 Lengths: 35" (889 mm) to 144"  
 (2657 mm)  
 Notes:
- Refer to series pages for weight capacities
  - Jump proof twin channel design



### 9559 Aligner

- Materials: Steel with brass-tone dichromate finish  
 Notes:
- Keeps lead doors aligned when closed
  - Use one on each lead door



### 9571 Parts Bag

- Includes one (1) 9572 hanger, one (1) 9618 pivot set, one (1) 9559 aligner, one (1) 9558 knob, and one (1) 9815 bumper stop



### 9815 Bumper Stop

- Materials: Zinc plated steel and rubber  
 Notes:
- Fits all Hager track styles except 9101
  - Screws onto track
  - Included in bi-fold sets 9570 and 9890



### 9572

#### Four Wheel Hanger with Top Mount Plate

- Materials: Steel with brass-tone dichromate finish  
 Wheel: 7/8" (22 mm) diameter  
 Notes:
- Wheels are self aligning to allow consistent contact with track
  - Pre-lubricated Celcon wheels
  - Includes wrench
  - For use on doors weighing up to 100 lbs (45 kg) each
  - For use with 9601, 9602, and 9603 track



### Optional Part Bags

#### 9569 Parts Bag

- Includes one (1) 9572 hanger, one (1) 9618 pivot set, one (1) 9559 aligner, one (1) 9558 knob, one (1) 9815 bumper stop, and three (3) 9220 hinges



### 9618 Pivot Set

- Materials: Zinc plated steel  
 Notes:
- For doors up to 50 lbs (23 kg)
  - Thumb wheel vertical adjustment
  - Top and bottom pivots require 3/8" (10 mm) diameter holes
  - For use with 9601



### 9220 Bi-Fold Door Hinge

- Materials: Steel with dichromate zinc finish  
 Hinge: 3" x 1" (76 mm x 25 mm) hole  
 Hole Locations: 1/2" (13 mm) from the center lines of holes to center of barrel  
 Notes: Non-mortise and easy to install



### 9558

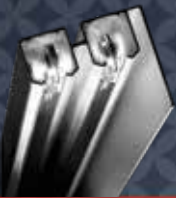
#### Wood Knob

- Diameter: 1-1/2" (38 mm)  
 Materials: Solid wood  
 Notes: Will accept paint or stain

### Optional Components

- 9121 Adj. Bottom Door Guide  
 9122 Bottom Guide Channel

For optional components see pages 59-63



## BI-FOLD - 9860 & 9861 BI-FOLD SETS

### FEATURES

- Heavy duty aluminum box track and hardware
- Conforms to ANSI A156.14
- Type: D8621, D8641, D8651, D8661

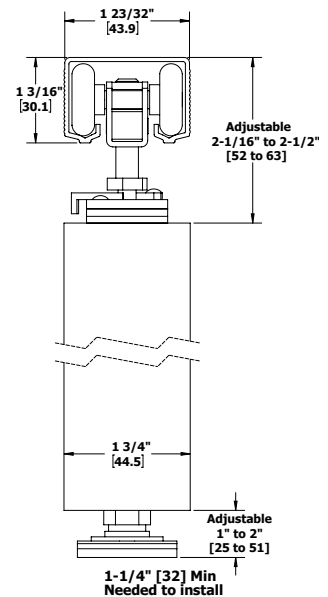
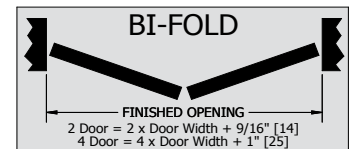
### SPECIFICATIONS

- For doors 1-3/8" - 1-3/4" (35 mm - 44 mm) thick
- Up to 125 lbs (57 kg) per panel bi-fold
- Up to 75 lbs (34 kg) per panel multi-fold
- Quick release hangers allow easy door hanging and removal
- Universal extruded aluminum track interchanges with Stanley & Johnson track and hangers
- Hangers have 1" (25 mm) diameter wheels

Part Number	Description
9860 Bi-Fold Set - For two doors Includes one (1) 9821 track, one (1) 9894 parts bag, and three (3) 1741 3.5" x 3.5" US2D hinges	
9860-30	Bi-Fold Set - 30" (762 mm) opening for two doors
9860-36	Bi-Fold Set - 36" (914 mm) opening for two doors
9860-48	Bi-Fold Set - 48" (1219 mm) opening for two doors
9861 Bi-Fold Set - For four doors Includes one (1) 9821 track, two (2) 9894 parts bags, and six (6) 1741 3.5" x 3.5" US2D hinges	
9861-48	Bi-Fold Set - 48" (1219 mm) opening for four doors
9861-60	Bi-Fold Set - 60" (1524 mm) opening for four doors
9861-72	Bi-Fold Set - 72" (1829 mm) opening for four doors
9861-96	Bi-Fold Set - 96" (2438 mm) opening for four doors

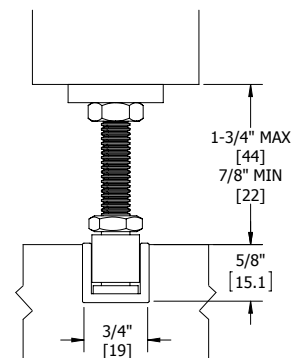
### TRACKS - 0.06" (1.5 mm) thick aluminum

Part Number	Description
Tracks for use with 9800 Series	
9821-59	59" (1499 mm) Heavy Duty Aluminum Box Track
9821-71	71" (1803 mm) Heavy Duty Aluminum Box Track
9821-96	96" (2438 mm) Heavy Duty Aluminum Box Track
9821-144	144" (3658 mm) Heavy Duty Aluminum Box Track



Interchanges with Stanley 125/250 Series and Johnson 100 Series.

### Optional Bottom Track 9121 - 9122



Installation note: Clearance between door bottom and top of 9122 track must be 7/8" (22 mm) minimum to 1-3/4" (44 mm) maximum.







## BI-FOLD - 9860 & 9861 TRACK COMPONENTS



### 9821 Aluminum Box Track

Materials: Extruded aluminum  
 Gauge: 0.06" (1.55 mm)  
 Track: 1-5/8" x 1-1/16"  
 (41 x 27 mm)  
 Lengths: 59" (1499 mm) to 144" (3658 mm)  
 Notes:
 

- For doors up to 250 lbs (113 kg)
- Jump proof twin channel design



### 9828 Bi-Fold Pivot Set

Materials: Zinc plated steel  
 Notes:
 

- For doors up to 125 lbs (57 kg)
- Track pivot bearing mounts up inside track - no track cutting required
- Bottom pivot socket has ball bearing raceway
- Top and bottom pivots require 1/2" (13 mm) diameter and 1-3/4" (44 mm) deep holes
- For use with 9801 and 9821 track



### 9894 Parts Bag

Includes one (1) 9825 4-wheel ball bearing hanger with quick release top mount plate, one (1) 9559 aligner, one (1) 9828 bi-fold pivot set with one (1) 9815 bumper stop



### 9815 Bumper Stop

Materials: Zinc plated steel and rubber  
 Notes:
 

- Fits all Hager track styles except 9101
- Screws onto track
- Included in bi-fold sets 9570 and 9890



### 9825 Four Wheel Ball Bearing Quick Release Hanger

Materials: Zinc plated steel  
 Wheels: Self aligning to allow consistent contact with track  
 Wheel: 1" (25 mm) diameter  
 Notes:
 

- For doors up to 125 lbs (57 kg) for bi-fold applications
- Pre-lubricated Celcon wheels
- For use with 9821 track
- Quick release feature allows easy door hanging and removal



### 9559 Aligner

Materials: Steel with brass-tone dichromate finish  
 Notes:
 

- Keeps lead doors aligned when closed
- Use one on each lead door

### Optional Components

1741	Full Mortise Hinge
9220	Bi-Fold Hinge
9121	Adj. Bottom Door Guide
9122	Bottom Guide Channel
9558	Wood Knob

For optional components see pages 59-63

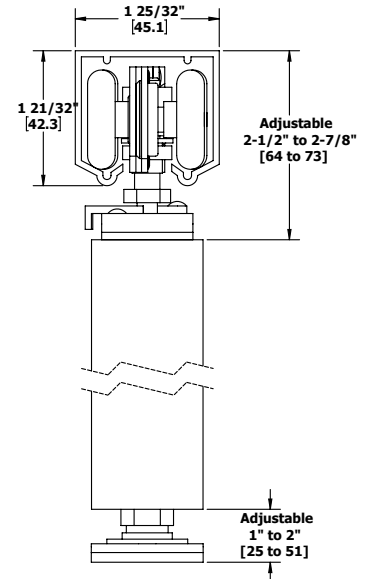
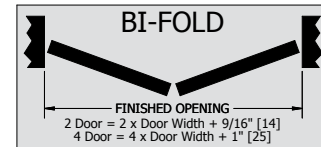
## BI-FOLD - 9890 & 9891 PACKAGED SETS

### FEATURES

- Heavy duty aluminum box track and hardware
- Conforms to ANSI A156.14
- Type: D8621, D8641, D8651, D8661

### SPECIFICATIONS

- For doors 1-1/8" - 1-3/4" (29 mm - 44 mm) thick
- Quick release hanger allows easy door hanging and removal
- Up to 125 lbs (57 kg) per panel bi-fold
- Up to 75 lbs (34 kg) per panel multi-fold
- Track is extruded aluminum jump-proof style with "V" shaped rails
- Hangers have four 1-1/4" (32 mm) diameter wheels
- Top and bottom pivots are heavy duty with ball bearing bottom socket assembly for smooth, long lasting operation
- Note: 9890 Series requires 1741 loose pin hinges – included

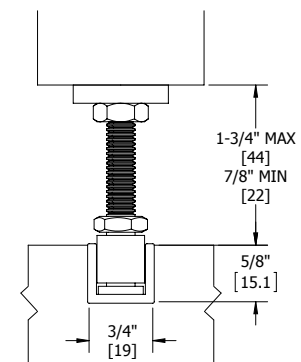


Part Number	Description
9890 Series Set - For two doors Includes one (1) 9801 track, one (1) 9827 hanger, one (1) 9828 pivot, and three (3) 1741 3.5" x 3.5" US2D hinges	
9890-30	Bi-Fold Set - 30" (762 mm) opening for two doors
9890-36	Bi-Fold Set - 36" (914 mm) opening for two doors
9890-48	Bi-Fold Set - 48" (1219 mm) opening for two doors
9891 Series Set - For four doors Includes one (1) 9801 track, one (1) 9827 hanger, one (1) 9828 pivot, and six (6) 1741 3.5" x 3.5" US2D hinges	
9891-48	Bi-Fold Set - 48" (1219 mm) opening for four doors
9891-60	Bi-Fold Set - 60" (1524 mm) opening for four doors
9891-72	Bi-Fold Set - 72" (1829 mm) opening for four doors
9891-96	Bi-Fold Set - 96" (2438 mm) opening for four doors

### TRACKS - 0.075" (1.9 mm) thick aluminum

Part Number	Description
Tracks for use with 9890 Series	
9801-72	72" (1829 mm) Aluminum Box Track
9801-96	96" (2438 mm) Aluminum Box Track
9801-120	120" (3048 mm) Aluminum Box Track
9801-144	144" (3658 mm) Aluminum Box Track
9801-192	192" (4877 mm) Aluminum Box Track

### Optional Bottom Track 9121 - 9122



Installation note: Clearance between door bottom and top of 9122 track must be 7/8" (22 mm) minimum to 1-3/4" (44 mm) maximum.





## BI-FOLD - 9890 & 9891 TRACK COMPONENTS



### 9801

#### Heavy Duty Aluminum Box Track

- Materials: Extruded aluminum  
 Gauge: 0.075" (1.9 mm)  
 Track: 1-5/8" x 1-3/4"  
 (41 mm x 44 mm)  
 Lengths: 72" (1829 mm) to 192"  
 (4877 mm)  
 Notes:
  - For doors up to 250 lbs (113 kg)
  - Jump proof twin channel design



### 9828

#### Bi-Fold Pivot Set

- Materials: Zinc plated steel  
 Notes:
  - For doors up to 125 lbs (57 kg)
  - Track pivot bearing mounts up inside track - no track cutting required
  - Bottom pivot socket has ball bearing raceway
  - Top and bottom pivots require 1/2" (13 mm) diameter and 1-3/4" (44 mm) deep holes
  - For use with 9801 and 9821 track



### 1741

#### Full Mortise, Five Knuckle, Plain Bearing Hinge

- Steel with steel pin (ANSI A5134)
- Reversible
- Square corners
- Removable pin
- 3-1/2" x 3-1/2" (89 mm x 89 mm)
- US2D



### 9559

#### Aligner

- Materials: Steel with brass-tone dichromate finish  
 Notes:
  - Keeps lead doors aligned when closed
  - Use one on each lead door



### 9827

#### Four Wheel Ball Bearing Quick Release Hanger

- Materials: Zinc plated steel  
 Wheels: Self aligning to allow consistent contact with track  
 Wheel: 1-1/4" (32 mm) diameter  
 Notes:
  - For doors up to 125 lbs (57 kg)
  - Pre-lubricated Celcon wheels
  - Ball bearing axles
  - For doors up to 250 lbs (113 kg) for by-pass and pocket applications
  - For use with 9801 track
  - Quick release feature allows easy door hanging and removal



### 9815

#### Bumper Stop

- Materials: Zinc plated steel and rubber  
 Notes:
  - Fits all Hager track styles except 9101
  - Screws onto track
  - Included in bi-fold sets 9570 and 9890

### Optional Components

- |      |                        |
|------|------------------------|
| 9121 | Adj. Bottom Door Guide |
| 9122 | Bottom Guide Channel   |
| 9566 | Knob                   |
| 9567 | Rose                   |
| 9558 | Wood Knob              |

For optional components see pages 59-63



# Pocket Door Kits



Pocket door aka “doors that vanish”— Hager Companies offer innovative design options for saving space and complementing classic and contemporary decors.

Hager’s pocket-door hardware is ideal for single and bi-parting pocket-door configurations in rough openings from two to four feet.

Steel or aluminum tracks support doors up to 250 lbs. and are designed for simple installation and durable performance. Hager’s 4-wheel spring carrier design provides an ultra-smooth gliding movement.

Pocket door hardware is available in kits (by opening length) or individual components.

Pocket frame kits include all the framing and hardware components to make installing pocket doors easy.



## POCKET - 9110 & 9130 PACKAGED SETS

### FEATURES

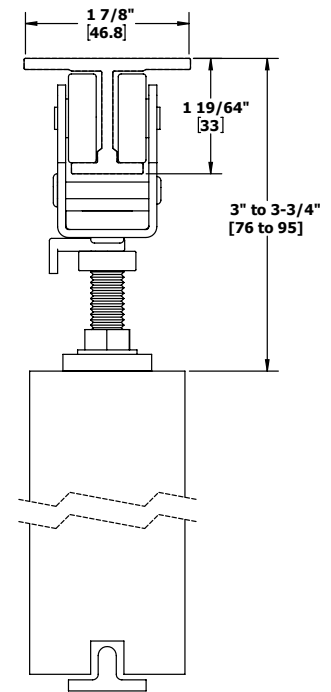
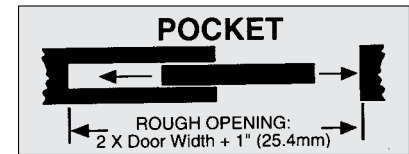
- Extra heavy duty aluminum I-beam track and hardware
- Conforms to ANSI A156.14
- Type: D8681, D8711

### SPECIFICATIONS

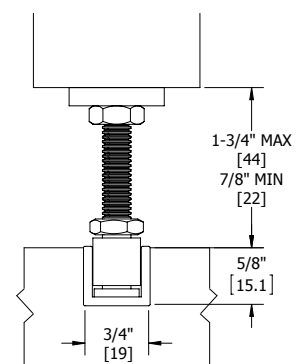
- For doors 1" - 1-3/4" (25 mm - 44 mm) thick doors
- 9110 Packaged Sets up to 175 lbs (80 kg) per door
- 9130 Packaged Sets up to 275 lbs (125 kg) per door
- Track is extruded aluminum jump-proof style with "I" beam track
- Hangers have 1" (25 mm) diameter wheels

Part Number	Description
<b>9110 Packaged Set</b> Includes one (1) 9101 track and one (1) 9109 parts bag: two (2) 9102 hangers, and one (1) 9115 floor guide	
9110-60	Pocket Door Set - 5' (1524 mm) for 2'6" (762 mm) door
9110-72	Pocket Door Set - 6' (1829 mm) for 3'0" (914 mm) door
9110-84	Pocket Door Set - 7' (2134 mm) for 3'6" (1067 mm) door
9110-96	Pocket Door Set - 8' (2438 mm) for 4'0" (1219 mm) door
9110-120	Pocket Door Set - 10' (3048 mm) for 5'0" (1524 mm) door
9110-144	Pocket Door Set - 12' (3658 mm) for 6'0" (1829 mm) door
<b>9130 Packaged Set</b> Includes one (1) 9101 track and one (1) 9129 parts bag: two (2) 9105 hangers, and one (1) 9115 floor guide	
9130-60	Pocket Door Set - 5' (1524 mm) for 2'6" (762 mm) door
9130-72	Pocket Door Set - 6' (1829 mm) for 3'0" (914 mm) door
9130-84	Pocket Door Set - 7' (2134 mm) for 3'6" (1067 mm) door
9130-96	Pocket Door Set - 8' (2438 mm) for 4'0" (1219 mm) door
9130-120	Pocket Door Set - 10' (3048 mm) for 5'0" (1524 mm) door
9130-132	Pocket Door Set - 11' (3353 mm) for 5'6" (1676 mm) door
9130-144	Pocket Door Set - 12' (3658 mm) for 6'0" (1829 mm) door

Part Number	Description
Tracks for use with 9110 Series and 9130 Series	
9101-72	72" (1829 mm) Aluminum I-Beam Track
9101-84	84" (2134 mm) Aluminum I-Beam Track
9101-96	96" (2438 mm) Aluminum I-Beam Track
9101-120	120" (3048 mm) Aluminum I-Beam Track
9101-144	144" (3658 mm) Aluminum I-Beam Track
9101-192	192" (4877 mm) Aluminum I-Beam Track



Optional Bottom Track  
9121 - 9122



Installation note: Clearance between door bottom and top of 9122 track must be 7/8" (22 mm) minimum to 1-3/4" (44 mm) maximum.



## POCKET - 9110 & 9130 TRACK COMPONENTS



### 9101

#### Aluminum I-Beam Track

Materials: Extruded aluminum  
 Gauge: 0.125" (3 mm) thick  
 Lengths: 72" (1829 mm) to 192" (4877 mm)

- Notes:
- Mounting holes are pre-punched for ease of installation
  - Requires two sets for by-pass opening



### 3835

#### Small Case Deadlock

See page 63 for details



### 9109

#### Parts Bag

Includes two (2) 9102 2-wheel hangers and one (1) 9115 floor guide

Note: Up to 175 lbs (79 kg) per door



### 9129

#### Parts Bag

Includes two (2) 9105 2-wheel hangers and one (1) 9115 floor guide

Note: Up to 275 lbs (125 kg) per door



### 9102

#### 2 Wheel Hanger

Materials: Zinc plated steel  
 Wheels:
 

- Nylon with Steel Ball Bearings
- Two self-aligning wheel hangers allow consistent contact with track

 Hanger: 1-3/16" x 2" x 1-1/8" (46 mm x 51 mm x 29 mm)  
 Bolt: 3/8" x 2-5/16" (10 mm x 59 mm) (Bolt not same as 9105)  
 Top Plate: 1" x 3-1/2" x 3/16" (25 mm x 89 mm x 5 mm)  
 Notes:
 

- Use with 9101 track
- Up to 175 lbs (79 kg) per door



### 9105

#### 4 Wheel Hanger

Materials: Zinc plated steel  
 Wheels: Nylon with steel ball bearings  
 Hanger:
 

- 4" x 2" x 1-3/4" (102 mm x 51 mm x 45 mm)
- Up to 275 lbs (125 kg) per door

 Bolt: 3/8" x 2-5/16" (10 mm x 59 mm)  
 Top Plate: 1" x 3-1/2" x 3/16" (25 mm x 89 mm x 5 mm)  
 Notes:
 

- Use with 9101 track, with doors weighing up to 275 lbs (125 kg)
- Four self-aligning wheel hangers allow consistent contact with track



### 9115

#### Bottom Door Guide

Materials: Die cast zinc aluminum alloy  
 Guide: 7/8" x 3/4" x 3" (22 mm x 19 mm x 76 mm)  
 Notes: Door bottom prep requires 1/4" (6 mm) wide kerf and 9/16" (14 mm) depth

### Optional Components

9111	Fixed Bottom Guide
9113	Stop
9114	Bottom Guide Rail
9884	Pocket Door Edge Pull

For optional components see pages 59-63

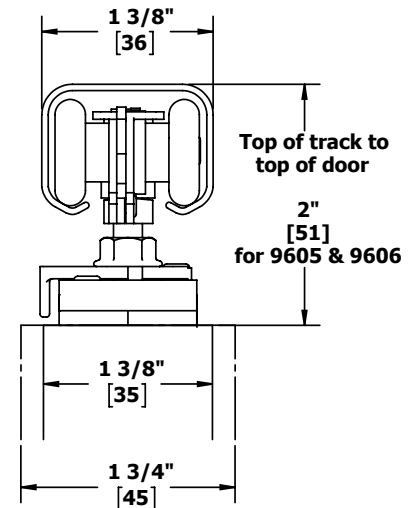
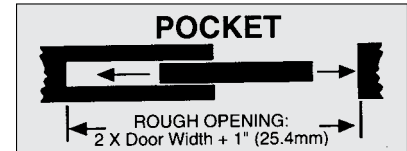
## POCKET - 9678 POCKET DOOR SET

### FEATURES

- Heavy duty aluminum box track and hardware
- Conforms to ANSI A156.14
- Type: D8681, D8711

### SPECIFICATIONS

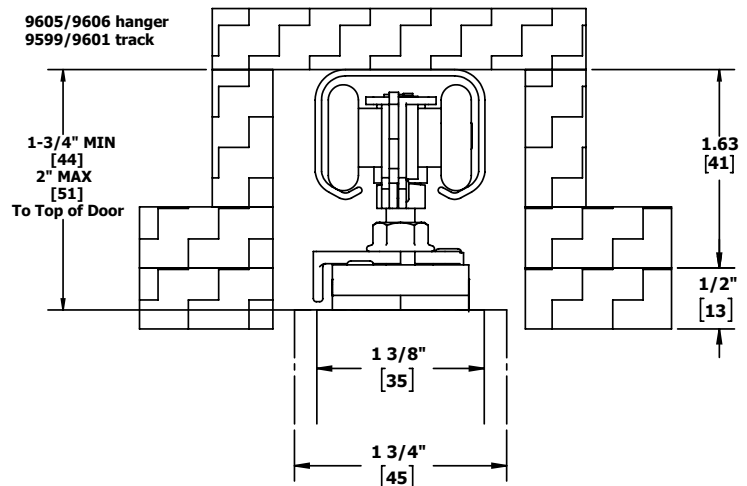
- For doors 1-1/8" - 1-3/4" (29 mm - 44 mm) thick
- Up to 125 lbs (57 kg) per door with 9605 hangers
- Up to 150 lbs (68 kg) per door with 9606 hangers
- Track is extruded aluminum jump-proof style with "V" shaped rails
- Hangers have four 7/8" (22 mm) diameter wheels for 9605 and wheels mounted on ball bearing shafts for 9606



Part Number	Description
9678	9678 Pocket Door Set for 125 lb. doors Includes one (1) 9601 track and one (1) 9632 parts bag: two (2) 9605 hangers, two (2) 9883 guides, and one (1) 9881 bumper
9678-72	Pocket Door Set - 6' (1829 mm) for 3'0" (914 mm) door
9678-96	Pocket Door Set - 8' (2438 mm) for 4'0" (1219 mm) door

### TRACKS - 0.05" (1.3 mm) thick aluminum

Part Number	Description
Tracks for use with 9601 Series	
9601-35	35" (889 mm) Aluminum Box Track
9601-47	47" (1194 mm) Aluminum Box Track
9601-55	55" (1397 mm) Aluminum Box Track
9601-59	59" (1499 mm) Aluminum Box Track
9601-63	63" (1600 mm) Aluminum Box Track
9601-71	71" (1803 mm) Aluminum Box Track
9601-96	96" (2438 mm) Aluminum Box Track
9601-120	120" (3048 mm) Aluminum Box Track
9601-144	144" (3658 mm) Aluminum Box Track







## POCKET - 9678 TRACK COMPONENTS



### 9601

#### Aluminum Box Track

- Materials: Extruded aluminum  
 Gauge: 0.050" (1.3 mm)  
 Track: 1-1/16" x 1-3/8"  
 (27 mm x 35 mm)  
 Lengths: 35" (889 mm) to 144"  
 (3657 mm)  
 Notes:
- Refer to series pages for weight capacities
  - Jump proof twin channel design



### 3835

#### Small Case Deadlock

See page 63 for details



### 9632

#### Parts Bag

Includes two (2) 9605 hangers, two (2) 9883 guides, and one (1) 9881 bumper



### Optional Part Bags

#### 9633

#### Parts Bag

Includes two (2) 9606 hangers, two (2) 9883 guides, and one (1) 9881 bumper  
 \* For doors weighing up to 150 lbs. (68 kg)



### 9605

#### 4-Wheel Hanger

- Materials: Steel with brass-tone dichromate finish  
 Wheel: 7/8" (22 mm) diameter  
 Notes:
- Up to 75 lbs (34 kg) per door
  - Self-aligning to allow consistent contact with track
  - Pre-lubricated Celcon wheels mounted on steel ball bearing shafts
  - Can be used on pivot set
  - Use in conjunction with 9601 or 9602 track



### 9606

#### 4-Wheel Ball Bearing Hanger

- Materials: Steel with brass-tone dichromate finish  
 Wheel: 7/8" (22 mm) diameter  
 Notes:
- Up to 75 lbs (34 kg) per door
  - Self-aligning to allow consistent contact with track
  - Pre-lubricated Celcon wheels mounted on steel ball bearing shafts
  - Used in conjunction with 9607, 9608 or 9610 top door plate and 9599, 9601 or 9602 track



### 9883

#### Two Piece Pocket Door Guide

- Materials: Polyethylene  
 Guide: 1-3/16" x 3/4" x 1-1/8"  
 (21 mm x 19 mm x 29 mm)  
 Notes:
- Two pieces per door required
  - Screws to jamb to guide door and prevent rubbing



### 9881

#### Bumper

- Materials: Rubber  
 Stop: 1/2" diameter x 3/8" deep  
 (13 mm x 10 mm)  
 Notes: With screws

### Optional Components

330D	Pocket Door Latch
330L	Pocket Door Privacy Latch
330M	Pocket Door Privacy Latch
2630	Flush Cup Pull
9884	Pocket Door Edge Pull
9815	Bumper Stop
9889	Non-Adjustable Floor Guide

For optional components see pages 59-63

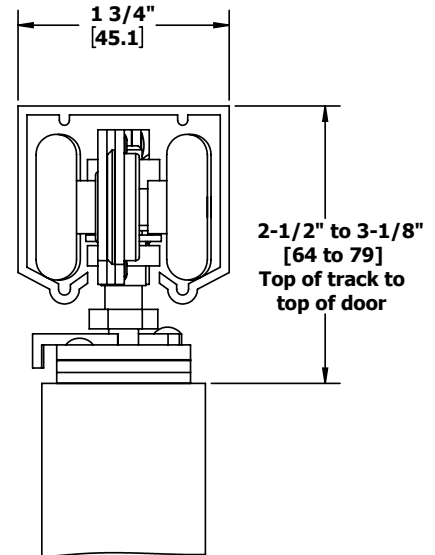
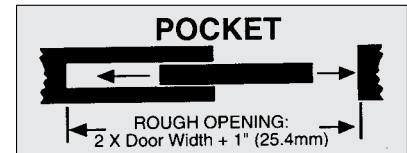
## POCKET - 9878 PACKAGED SETS

### FEATURES

- Extra heavy duty aluminum box track and hardware
- Conforms to ANSI A156.14
- Type: D8681, D8711

### SPECIFICATIONS

- For doors 1-3/8" - 1-3/4" (35 mm - 44 mm) thick
- Up to 250 lbs (113 kg) per door
- Track is extruded aluminum jump-proof style with "V" shaped rails
- Hangers have four 1-1/4" (32 mm) diameter wheels



*Interchanges with Stanley 57/58.*

Part Number	Description
9878 Series Set	Includes one (1) 9801 track and one (1) 9742 parts bag
9878-72	Pocket Door Set - 6' (1829 mm) for 3'0" (914 mm) door
9878-96	Pocket Door Set - 8' (2438 mm) for 4'0" (1219 mm) door

### TRACKS - 0.075" (1.9 mm) thick aluminum

Part Number	Description
Tracks for use with 9801 Series	
9801-72	72" (1829 mm) Aluminum Box Track
9801-96	96" (2438 mm) Aluminum Box Track
9801-120	120" (3048 mm) Aluminum Box Track
9801-144	144" (3658 mm) Aluminum Box Track
9801-192	192" (4877 mm) Aluminum Box Track



## POCKET - 9878 TRACK COMPONENTS



### 9801

#### Extra Heavy Duty Box Track

- Materials: Extruded aluminum  
 Gauge: 0.075" (1.9 mm)  
 Track: 1-5/8" x 1-3/4"  
 (41 mm x 44 mm)  
 Lengths: 72" (1829 mm) to 192"  
 (4877 mm)  
 Notes:
- For doors up to 250 lbs (113 kg)
  - Jump proof twin channel design



### 3835

#### Small Case Deadlock

- Thumbturn: Meet ADA Requirements, "No pinch," "No grasp."  
 Lock Case: Heavy wrought steel with zinc dichromate finish - 4-5/16" x 3-9/16" x 1" (110 mm x 90 mm x 25 mm)  
 Armor Front: 1-1/4" x 5-5/8" x 7/32" (32 mm x 143 mm x 5 mm)  
 Keys: Two operating keys supplied per lock  
 Cylinder:
- Brass - keyed different - C keyway - Standard
  - Other keying options, including keyed 6-pin, available from factory
  - SFIC uncombined or combined, brass 6- or 7-pin sold separately
  - Drilled 6-pin, keyed 5-pin - Standard
  - Small Format Interchangeable Core housing available
  - Schlage "L" cam - Standard
- Door Thickness:
- 1-3/8" - 2-1/2" (35mm-64mm) - steel door
  - 1-3/4" - 2-1/2" (45mm-64mm)- wood door
  - Must specify door thickness if greater than 1-3/4" (45mm)
- Backset: 2-3/4" (70 mm) only  
 Deadbolt: 1" (25 mm) throw - stainless steel  
 Strike: 1 1/8" wide x 3 1/2" (29mm x 89mm) NO LIP  
 Finishes: US26D  
 Functions: 35-Cylinder x Thumbturn, 36-Single Cylinder, 37-Double Cylinder, 38-Thumbturn Only, 39-Thumbturn w/ Emergency Key



### 9742

#### Parts Bag

- Includes two (2) 9827 hangers, two (2) 9883 guides, and one (1) 9881 bumper



### 9827

#### Four Wheel Ball Bearing Hanger

- Materials: Zinc plated steel  
 Wheels: Self aligning to allow consistent contact with track  
 Wheel: 1-1/4" (32 mm) diameter  
 Notes:
- For doors up to 75 lbs (34 kg)
  - Pre-lubricated Celcon wheels on steel shafts with steel ball bearings
  - Ball bearing axles
  - For use with 9801 track



### 9881

#### Bumper

- Materials: Rubber  
 Stop: 1/2" diameter x 3/8" deep (13 mm x 10 mm)  
 Notes: With screws



### 9883

#### Two Piece Pocket Door Guide

- Materials: Polyethylene  
 Guide: 1-3/16" x 3/4" x 1-1/8" (21 mm x 19 mm x 29 mm)  
 Notes:
- Two pieces per door required
  - Screws to jamb to guide door and prevent rubbing

### Optional Components

330D	Pocket Door Latch
330L	Pocket Door Privacy Latch
330M	Pocket Door Privacy Latch
2630	Flush Cup Pull
9884	Pocket Door Edge Pull
9815	Bumper Stop
9884	Pocket Door Edge Pull
9889	Non-Adjustable Floor Guide

For optional components see pages 59-63



## POCKET - 9901 SERIES

### FEATURES

- Extra heavy duty aluminum box track and hardware
- Conforms to ANSI A156.14
- Type: D8681

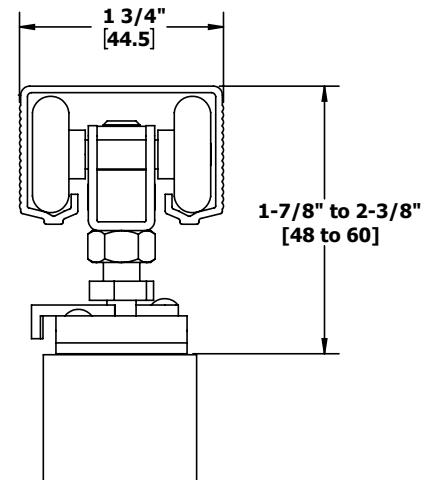
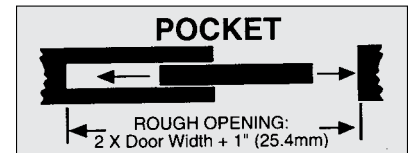
### SPECIFICATIONS

- For doors 1-3/8" - 1-3/4" (35 mm - 44 mm) thick
- Up to 250 lbs (113 kg) per door
- Quick release hangers allow easy door hanging and removal
- Hangers interchange with Stanley & Johnson track and hangers
- Universal extruded aluminum track interchanges with Stanley & Johnson track and hangers
- Hangers have 1" (25 mm) diameter ball bearing wheels

Part Number	Description
9901 Series Set	Includes one (1) 9821 track and one (1) 9895 parts bag: two (2) 9825 hangers, two (2) 9883 guides, and one (1) 9881 bumper
9901-72	Pocket Door Set - 6' (1829 mm) for 3'0" (914 mm) door
9901-96	Pocket Door Set - 8' (2438 mm) for 4'0" (1219 mm) door

### TRACKS - 0.06" (1.5 mm) thick aluminum

Part Number	Description
Tracks for use with 9901 Series	
9821-59	59" (1499 mm) Aluminum Box Track
9821-71	71" (1803 mm) Aluminum Box Track
9821-96	96" (2438 mm) Aluminum Box Track
9821-144	144" (3658 mm) Aluminum Box Track



*Interchanges with Stanley 125/250 Series and Johnson 100 Series.*





## POCKET - 9901 SERIES TRACK COMPONENTS



### 9821

#### Aluminum Box Track

- Materials: Extruded aluminum  
 Gauge: 0.06" (1.55 mm)  
 Track: 1-5/8" x 1-1/16"  
 (41 mm x 27 mm)  
 Lengths: 59" (1499 mm) to 144"  
 (3658 mm)  
 Notes:
  - For doors up to 250 lbs (113 kg)
  - Jump proof twin channel design



### 3835

#### Small Case Deadlock

- Thumbturn: Meet ADA Requirements, "No pinch," No grasp."  
 Lock Case: Heavy wrought steel with zinc dichromate finish - 4-5/16" x 3-9/16" x 1" (110 mm x 90 mm x 25 mm)  
 Armor Front: 1-1/4" x 5-5/8" x 7/32" (32 mm x 143 mm x 5 mm)  
 Keys: Two operating keys supplied per lock  
 Cylinder:
  - Brass - keyed different - C keyway - Standard
  - Other keying options, including keyed 6-pin, available from factory
  - SFIC uncombined or combined, brass 6- or 7-pin sold separately
  - Drilled 6-pin, keyed 5-pin - Standard
  - Small Format Interchangeable Core housing available
  - Schlage "L" cam - Standard
 Door Thickness:
  - 1-3/8" - 2-1/2" (35mm-64mm) - steel door
  - 1-3/4" - 2-1/2" (45mm-64mm)- wood door
  - Must specify door thickness if greater than 1-3/4" (45mm)
 Backset: 2-3/4" (70 mm) only  
 Deadbolt: 1" (25 mm) throw - stainless steel  
 Strike: 1 1/8" wide x 3 1/2" (29mm x 89mm) NO LIP  
 Finishes: US26D  
 Functions: 35-Cylinder x Thumbturn, 36-Single Cylinder, 37-Double Cylinder, 38-Thumbturn Only, 39-Thumbturn w/ Emergency Key



### 9895

#### Parts Bag

- Includes two (2) 9825 4-wheel ball bearing hangers with quick release top plate, two (2) 9883 guides, and one (1) 9881 bumper



### 9825

#### 4 Wheel Ball Bearing Hanger with Quick Release Top Mount Plate

- Materials: Zinc plated steel  
 Wheels: Self aligning to allow consistent contact with track  
 Wheel: 1" (25 mm) diameter  
 Notes:
  - Pre-lubricated Celcon wheels
  - Up to 250 lbs (113 kg) doors
  - For use with 9821 track
  - Quick release feature allows easy door hanging and removal



### 9883

#### Two Piece Pocket Door Guide

- Materials: Polyethylene  
 Guide: 1-3/16" x 3/4" x 1-1/8"  
 (21 mm x 19 mm x 29 mm)  
 Notes:
  - Two pieces per door required
  - Screws to jamb to guide door and prevent rubbing



### 9881

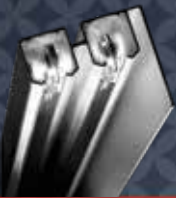
#### Bumper

- Materials: Rubber  
 Stop: 1/2" diameter x 3/8" deep  
 (13 mm x 10 mm)  
 Notes: With screws

### Optional Components

- |      |                            |
|------|----------------------------|
| 330D | Pocket Door Latch          |
| 330L | Pocket Door Privacy Latch  |
| 330M | Pocket Door Privacy Latch  |
| 2630 | Flush Cup Pull             |
| 9559 | Aligner                    |
| 9815 | Bumper Stop                |
| 9884 | Pocket Door Edge Pull      |
| 9889 | Non-Adjustable Floor Guide |

For optional components see pages 59-63



**POCKET - 9628 | 9629 | 9630 | 9631**

**FEATURES**

- Pocket door kit
- Conform to ANSI A156.14
- Type: D8671, D8701

**SPECIFICATIONS**

- Jump proof track and rollers
- Pre-assembled header assembly goes up quickly
- Easy door installation and removal for painting and repair
- Real wood split studs, size 3/4" x 1-5/8" (19 mm x 26 mm) length relative to height, steel encased for rigidity and to prevent fastener penetration into the pocket
- Track header unit attaches to rough framing at both ends - split studs nail or screw to track header - no connections to rough header
- 2 pair of split studs with wood inserts
- See chart below for appropriate kit



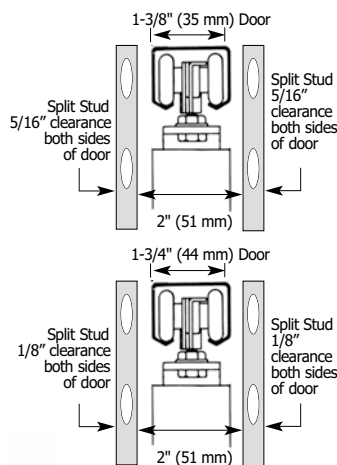
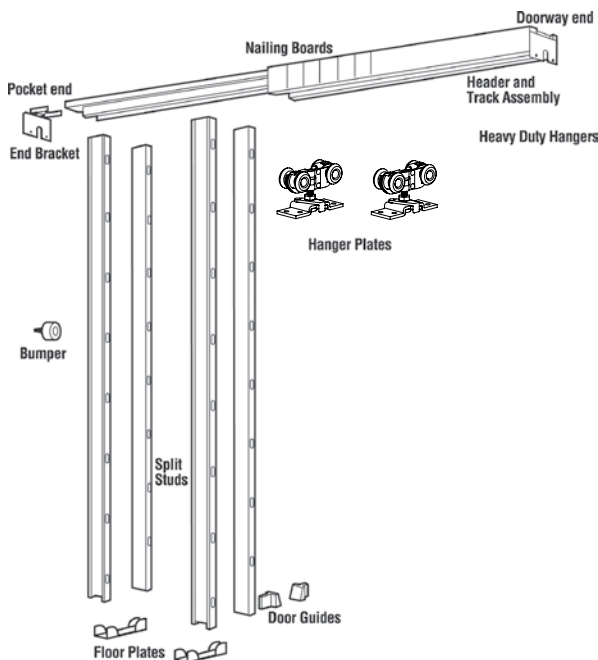
Part #	Max Door Weight	Door Thickness*	Door Width	Door Height	Hanger Bearings
9628	75 lbs (34 kg)	1-3/8" - 1-3/4" (35 mm - 44 mm)	3'0" (914 mm)	9'0" (2743 mm)	9606 Steel Ball
9629	75 lbs (34 kg)	1-3/8" - 1-3/4" (35 mm - 44 mm)	3'0" (914 mm)	8'0" (2438 mm)	9606 Steel Ball
9630	75 lbs (34 kg)	1-3/8" - 1-3/4" (35 mm - 44 mm)	3'0" (914 mm)	7'0" (2134 mm)	9606 Steel Ball
9631	75 lbs (34 kg)	1-3/8" - 1-3/4" (35 mm - 44 mm)	3'0" (914 mm)	6'8" (2032 mm)	9605 Molded Celcon

\* 9634 adapter kit is recommended for 1-3/4" (45 mm) doors (sold separately).  
 For doors in excess of 75 lbs, we recommend the use of our 9850 Pocket Door kit.

Installation Note: For bi-parting doors, use Hager double pocket door kit 9639 (sold separately).



Joins two pocket door frames to make one large doorway. Rough opening width changes to door width multiplied by four.



Note: 9634 adapter kit (sold separately) recommended for doors 1-3/4" (45 mm) thick.

**Contents**

Quantity	Description
1	Header assembly
2	Pair of split studs
2	Heavy duty hangers
2	Door hanger plates
1	Bumper
1	Pair of door guides
1	Adjusting wrench
2	Floor plates
1	Doorway end bracket
1	Pocket end bracket



## POCKET - 9850

### FEATURES

- Heavy duty pocket door kit
- Conform to ANSI A156.14
- Type: D8671, D8701

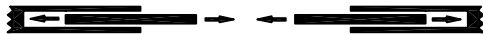
# Pocket Door Kit

### SPECIFICATIONS

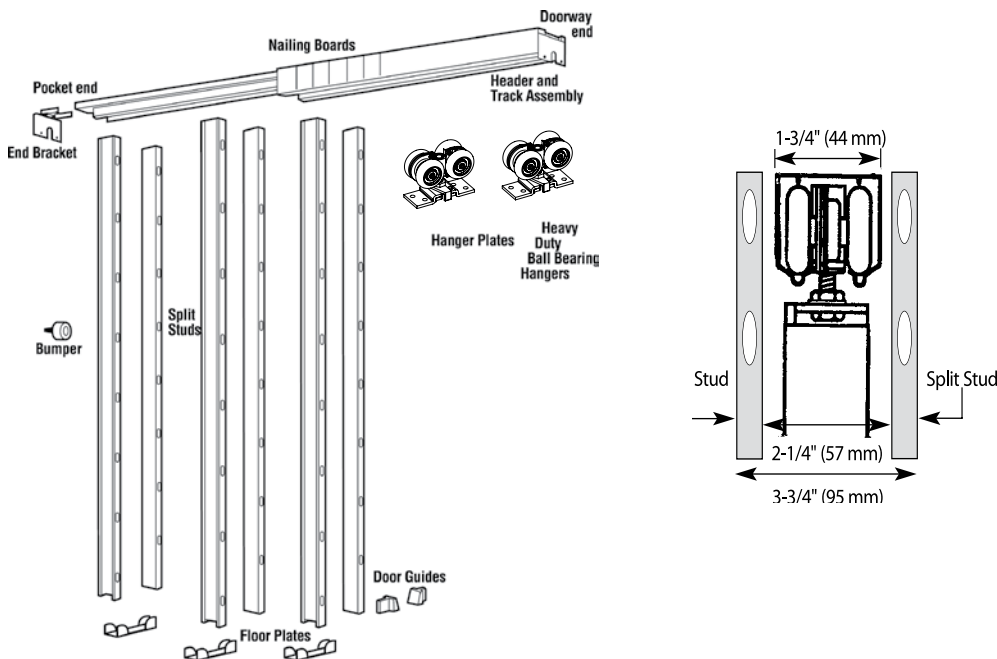
- For doors 1-3/8" - 1-3/4" (35 mm - 44 mm) thick, up to 4'0" (1219 mm) wide and 8'0" (2438 mm) or 8'6" (2591 mm) high, weighing up to 250 lbs (112 kg)
- Jump proof track and rollers
- 9801 heavy duty aluminum box track
- Pre-assembled header assembly goes up quickly
- Easy door installation and removal for painting and repair
- Real wood split studs, size 3/4" x 1-5/8" (19 mm x 26 mm) length relative to height, steel encased for rigidity and to prevent fastener penetration into the pocket
- Track header unit attaches to rough framing at both ends - split studs nail or screw to track header - no connections to rough header
- 3 pair of split studs with wood inserts

Part #	Max Door Weight	Door Thickness*	Door Width	Door Height	Hanger Bearings
9850	250 lbs (57 kg)	1-3/8" - 1-3/4" (35 mm - 44 mm)	4'0" (1219 mm)	8'0" (2438 mm)	9829 Steel Ball

Installation Note: For bi-parting doors, use Hager double pocket door kit 9639 (sold separately).

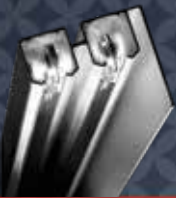


Joins two pocket door frames to make one large doorway. Rough opening width changes to door width multiplied by four.



### Contents

Quantity	Description
1	Header assembly
3	Pair of split studs
2	Heavy duty hangers
2	Door hanger plates
1	Bumper
1	Pair of door guides
1	Adjusting wrench
3	Floor plates
1	Doorway end bracket
1	Pocket end bracket



## POCKET - POCKET DOOR KIT COMPONENTS



### 330D

#### Pocket Door Latch

Certification: Meets ANSI A156.14 for D0821.1

Size: 2-3/4" x 2-1/2"  
(70 mm x 64 mm)

Finger Piece: 1-3/8" (35 mm) extension

Materials: Brass

Finishes: US3, US5, US10B, US15, US15A, US19, US26, US26D

Fasteners: Two (2) #6 x 5/8" OPHWS; (2) #6 x 3/4" FPHWS

Notes: For use with 1-3/8" to 1-3/4" (35 mm to 45 mm) door



### 2610

#### Flush Cup Finger Pull

Overall Diameter: 31/32" (25 mm)

Finger Pull: 3/4" (19 mm) diameter

Depth: 5/16" (8 mm)

Projection: 1/32" (.8 mm)

Materials: Solid brass

Finishes: US3, US4, US5, US10A, US15, US15A, US26, US26D, ABA

Notes: Built-in prong design eliminates the need for screws or brads.



### 330L

#### Pocket Door Privacy Latch

Size: 2-3/4" x 2-1/2"  
(70 mm x 64 mm)

Finger Piece: 1-3/8" (35 mm) extension

Strike Size: 1" x 2-1/4" (25 mm x 57 mm)

Materials: Brass

Finishes: US3, US5, US10B, US15, US15A, US19, US26, US26D

Fasteners: Two (2) #6 x 5/8" OPHWS; (2) #6 x 3/4" FPHWS

Notes: For use with 1-3/8" door



### 2630

#### Flush Cup Pull

Overall Diameter: 2-7/16" (62 mm)

Finger Pull: 2-1/16" (52 mm) diameter

Depth: 11/32" (9 mm)

Projection: 3/32" (2 mm)

Materials: Solid brass

Finishes: US3, US4, US5, US10A, US15, US15A, US26, US26D, ABA

Notes: Built-in prong design eliminates the need for screws or brads.



### 330M

#### Pocket Door Privacy Latch

Certifications: Meets ANSI A156.14 for D0831

Size: 2-3/4" x 2-1/2"  
(70 mm x 64 mm)

Finger Piece: 1-3/8" (35 mm) extension

Strike Size: 1" x 2-1/4" (25 mm x 57 mm)

Materials: Brass

Finishes: US3, US5, US10B, US15, US15A, US19, US26, US26D

Fasteners: Two (2) #6 x 5/8" OPHWS; (2) #6 x 3/4" FPHWS

Notes: For use with 1-3/4" door



### 9605

#### 4-Wheel Hanger

Materials: Steel with brass-tone dichromate finish

Wheel: 7/8" (22 mm) diameter

Notes:

- For doors up to 75 lbs (34 kg)
- Wheels are self aligning to allow consistent contact with track
- Pre-lubricated Celcon wheels mounted on steel ball bearing shafts
- Can be used on pivot set
- Use in conjunction with 9601 or 9602 track







## POCKET - POCKET DOOR KIT COMPONENTS



### 9606

#### 4-Wheel Ball Bearing Hanger with Top Mount Plate

- Materials:** Steel with brass-tone dichromate finish
- Wheels:** 7/8" (22 mm) diameter
- Notes:**
- Self aligning to allow consistent contact with track
  - Pre-lubricated Celcon wheels mounted on steel ball bearing shafts
  - Up to 75 lbs (34 kg) per door
  - Use with 9601, 9602, or 9603 track



### 3835

#### Small Case Deadlock

- Thumbturn:** Meet ADA Requirements, "No pinch," No grasp."
- Lock Case:** Heavy wrought steel with zinc dichromate finish - 4-5/16" x 3-9/16" x 1" (110 mm x 90 mm x 25 mm)
- Armor Front:** 1-1/4" x 5-5/8" x 7/32" (32 mm x 143 mm x 5 mm)
- Keys:** Two operating keys supplied per lock
- Cylinder:**
- Brass - keyed different - C keyway - Standard
  - Other keying options, including keyed 6-pin, available from factory
  - SFIC uncombined or combined, brass 6- or 7-pin sold separately
  - Drilled 6-pin, keyed 5-pin - Standard
  - Small Format Interchangeable Core housing available
  - Schlage "L" cam - Standard
- Door Thickness:**
- 1-3/8" - 2-1/2" (35mm-64mm) - steel door
  - 1-3/4" - 2-1/2" (45mm-64mm)- wood door
  - Must specify door thickness if greater than 1-3/4" (45mm)
- Backset:** 2-3/4" (70 mm) only
- Deadbolt:**
- 1" (25 mm) throw - stainless steel
- Strike:**
- 1 1/8" wide x 3 1/2" (29mm x 89mm) NO LIP
- Finishes:** US26D
- Functions:** 35-Cylinder x Thumbturn, 36-Single Cylinder, 37-Double Cylinder, 38-Thumbturn Only, 39-Thumbturn w/ Emergency Key



### 9632

#### Parts Bag

- Includes:**
- Two (2) 9605 hangers
  - Two (2) 9883 guides
  - One (1) 9881 bumper



### 9633

#### Parts Bag

- Includes:**
- Two (2) 9606 hangers
  - Two (2) 9883 guides
  - One (1) 9881 bumper



### 9827

#### Four Wheel Ball Bearing Hanger

- Materials:** Zinc plated steel
- Wheels:** Self aligning to allow consistent contact with track
- Wheel:** 1-1/4" (32 mm) diameter
- Notes:**
- For doors up to 75 lbs (34 kg)
  - Pre-lubricated Celcon wheels on steel shafts with steel ball bearings
  - Ball bearing axles
  - For use with 9801 track

### Optional Components

- |      |                              |
|------|------------------------------|
| 9610 | Replacement Top Mount Plate  |
| 9634 | Pocket Door Adaptor Kit      |
| 9639 | Dbl. Pocket Door Adaptor Kit |
| 9865 | Flush Cup Pull               |
| 9881 | Bumper                       |
| 9883 | Two Piece Pocket Door Guide  |
| 9884 | Pocket Door Edge Pull        |
| 9889 | Non-Adjustable Floor Guide   |
| 9262 | Pocket Door Keyed Lock       |
| 9877 | Door Guide                   |

For optional components see pages 59-63



# Wall-Mount Hardware



*Architecturally designed wall-mount system for commercial or residential spaces*

Hager Companies wall-mount sliding door hardware is designed to blend seamlessly with any interior décor — from a contemporary uptown loft, to any more traditional environment. This architecturally focused design delivers a clean, finished look to any interior doorway or room divider (from two to six opening feet) while providing maximum space utilization.

Hager's 9710 Wall-Mount system is available in clear anodized and dark bronze finishes. Quiet four-wheel ball bearing carriers support doors up to 250 lbs. Hardware supports one- and two-door applications.

Wall-mount door hardware is available in kits (by track length) or individual components.



## WALL MOUNT - 9710

### FEATURES

- Heavy duty aluminum box track and hardware
- Conforms to ANSI BHMA A156.14-2007
- Grade 1, D8011, D8681, D8691
- Grade 2, D8012, D8692
- Bi-parting Grade 1, D8711
- Grade 2, D8721

### SPECIFICATIONS

- For doors 1" - 1-3/4" (25 mm - 45 mm) thick
- Up to 250 lbs (113 kg) per door
- Track is extruded aluminum jump-proof style
- Hangers have four 1-1/4" (32 mm) diameter wheels

Part Number	Description	Stock#
9710 Packaged Set		
Includes one (1) 9703 track, one (1) 9704 anodized fascia, one (1) 9705 end caps and one (1) 9711 parts bags.		
9710-60	Wall Mount Packaged Set- Aluminum 5' (1524mm) for 1 Door	160955
9710-72	Wall Mount Packaged Set- Aluminum 5' (1524mm) for 1 Door	160958
9710-96	Wall Mount Packaged Set- Aluminum 8' (1219mm) for 1 Door	160959
9710-144	Wall Mount Packaged Set- Aluminum 12' (1829mm) for 1 Door	160991

Part Number	Description	Stock#
9710 Packaged Set		
Includes one (1) 9703 track, one (1) 9704 anodized fascia, one (1) 9705 end caps and one (1) 9711 parts bags.		
9710-60	Wall Mount Packaged Set- Dark Bronze 5' (1524mm) for 1 Door	160961
9710-72	Wall Mount Packaged Set- Dark Bronze 5' (1524mm) for 1 Door	160962
9710-96	Wall Mount Packaged Set- Dark Bronze 8' (1219mm) for 1 Door	160963
9710-144	Wall Mount Packaged Set- Dark Bronze 12' (1829mm) for 1 Door	160989

**TRACKS** One track required for each Wall Mount opening-.125 (3.2 mm) thick aluminum

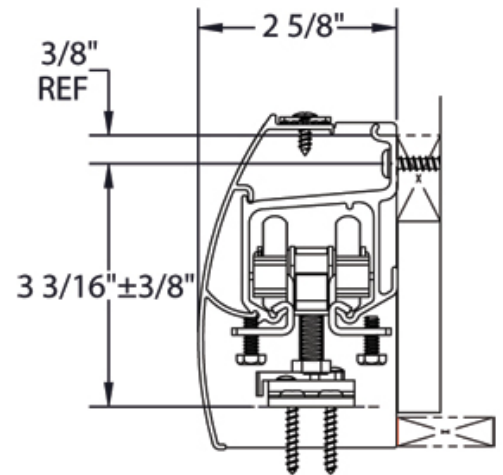
Part Number	Description	Stock#
9703 Wall Mount Etched Aluminum Finish Tracks for use with 9710 Series		
9703-60	Wall Mount Track- Aluminum 5' (1524mm) for 1 Door	160984
9703-72	Wall Mount Track- Aluminum 6' (1839 mm) for 1 Door	160985
9703-96	Wall Mount Track- Aluminum 8' (1219mm) for 1 Door	160986
9703-144	Wall Mount Track- Aluminum 12' (1829mm) for 1 Door	160988

9703 Wall Mount Dark Bronze Finish Tracks for use with 9710 Series		
9703-60	Wall Mount Track- Dark Bronze 5' (1524mm) for 1 Door	160993
9703-72	Wall Mount Track- Dark Bronze 6' (1839 mm) for 1 Door	160994
9703-96	Wall Mount Track- Dark Bronze 8' (1219mm) for 1 Door	160995
9703-144	Wall Mount Track- Dark Bronze 12' (1829mm) for 1 Door	160996

### WALL MOUNT



9827 Hanger



*Interchanges with Stanley 57/58.*

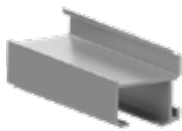


## WALL MOUNT - 9710

**FASCIA** One anodized fascia required for each Wall Mount opening-.825 (2.1 mm) thick aluminum

Part Number	Description	Stock#
9704 Wall Mount Anodized Aluminum Finish Fascia for use with 9710 Series		
9704-60	Wall Mount Fascia- Anodized Aluminum 5' (1524mm) for 1 Door	160984
9704-72	Wall Mount Fascia- Anodized Aluminum 6' (1839 mm) for 1 Door	160985
9704-96	Wall Mount Fascia- Anodized Aluminum 8' (1219mm) for 1 Door	160986
9704-144	Wall Mount Fascia- Anodized Aluminum 12' (1829mm) for 1 Door	160988

9704 Wall Mount Anodized Dark Bronze finish Fascia for use with 9710 Series		
9704-60	Wall Mount Fascia- Anodized Dark Bronze 5' (1524mm) for 1 Door	160993
9704-72	Wall Mount Fascia- Anodized Dark Bronze 6' (1839 mm) for 1 Door	160994
9704-96	Wall Mount Fascia- Anodized Dark Bronze 8' (1219mm) for 1 Door	160995
9704-144	Wall Mount Fascia- Anodized Dark Bronze 12' (1829mm) for 1 Door	160996



### 9703

#### Extra Heavy Duty Box Track

Materials: Extruded aluminum  
 Gauge: .125 (3.2 mm) thick  
 Lengths: 60" (1524 mm) to 144" (1829 mm)

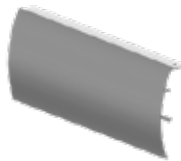
- Notes:
- For doors up to 250 lbs (113 kg)
  - Jump proof track with twin channel design



### 9705

#### End Cap Sets

- Materials: Anodized aluminum  
 Notes:
- Concealed fasteners provide a finished look
  - One each left and right end cap and hardware



### 9704

#### Smooth Anodized Fascia

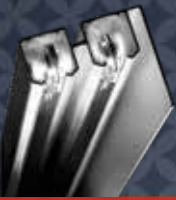
Materials: Anodized aluminum  
 Gauge: .0620 (1.6 mm)  
 Fascia: 4 3/8" (111 mm)  
 Lengths: 60" (1524 mm) to 144" (1829 mm)



### 9711

#### Parts Bag

Includes: Two (2) each 9827 four wheel ball bearing hanger and quick release top mount plate, One (1) each 9115 bottom door guide, and four (4) each 9815 bumper stop



## WALL MOUNT - 9710 COMPONENTS



### 9827

#### Four Wheel Ball Bearing Hanger

- Materials: Zinc plated steel
- Wheels: Self aligning to allow consistent contact with track
- Wheel: 1-1/4" (32 mm) diameter
- Notes:
- For doors up to 250 lbs (113 kg)
  - Pre-lubricated Celcon wheels on steel shafts with steel ball bearings
  - Ball bearing axles
  - For use with 9703 and 9801 track



### 9115

#### Bottom Door Guide

- Materials: Die cast zinc aluminum alloy
- Guide: 7/8" x 3/4" x 3" (22 mm x 19 mm x 76 mm)
- Notes: Door bottom prep requires 1/4" (6 mm) wide kerf and 9/16" (14 mm) depth



### 9815

#### Bumper Stop

- Materials: Zinc plated steel and rubber
- Notes:
- Fits all Hager track styles except 9101
  - Screws onto track
  - Included in 9710 wall mount sets
  - Included in bi-fold sets 9570 and 9890

### Optional Components

9610	Replacement Top Mount Plate
330D	Pocket Door Latch
330L	Pocket Door Privacy Latch
330M	Pocket Door Privacy Latch
9884	Pocket Door Edge Pull

For optional components see pages 59-63

# Barn Door Hardware



Hager Companies introduces our new premium Stainless Steel Sliding Barn Door Hardware System with versatile options for glass or wood doors. A seamless fit for commercial or residential applications, the Stainless Steel Sliding Barn Door Hardware System offers seven styles of door hangers complimenting any décor.



## 9400 SERIES BARN DOOR HARDWARE

### FEATURES

- 304 stainless steel track and hangers nylon coated rollers
- Conforms to ANSI BHMA A156.14-2007
- Grade 1 for sliding doors by exceeding 100,000 cycles in operation

### SPECIFICATIONS

- Door weight up to 250 lbs
- Wood doors 1-3/4" thick - top-mount hangers
- Door bottom 3/8" undercut
- Glass doors 3/8" to 1/2" thick - face-mount hangers

### SLIDING BARN DOOR



Stock Number	Hager Part Number	Description
<b>Stainless Steel 78" Kits</b>		
<b>Top Mount</b>		
183635	9432-78	Top Mount Stick 2m (78-3/4") SS Round Rail
183637	9433-78	Top Mount Dual Wheel 2m (78-3/4") SS Round Rail
183683	9462-78	Flat Rail Stick Strap SS 6' Flat track
183641	9435-78	Top Mount Spoke Wheel 2m (78-3/4") SS Round Rail
<b>Face Mount</b>		
183643	9436-78	Face mount Strap Stick 2m (78-3/4") SS Round Rail
183646	9437-78	Face mount Strap Dual Wheel 2m (78-3/4") SS Round Rail
183650	9438-78	Face mount Strap Triangle 2m (78-3/4") SS Round Rail
<b>Stainless Steel 96" Kits - Subject to Extended Lead Times</b>		
<b>Top Mount</b>		
183636	9432-96	Top Mount Stick 2m (96-3/4") SS Round Rail
183638	9433-96	Top Mount Dual Wheel 2m (96-3/4") SS Round Rail
183640	9462-96	Flat Rail Stick Strap SS 8' Flat track
183642	9435-96	Top Mount Spoke Wheel 2m (96-3/4") SS Round Rail
<b>Face Mount</b>		
183644	9436-96	Face mount Strap Stick 2m (96-3/4") SS Round Rail
183647	9437-96	Face mount Strap Dual Wheel 2m (96-3/4") SS Round Rail
183651	9438-96	Face mount Strap Triangle 2m (96-3/4") SS Round Rail
<b>Accessories</b>		
183156	1-269-8665	Tool set for 05WG; 06WG; 07WG (Round Rail)
183163	1-269-8666	Tool set for 01W; 02W (Round Rail)
183164	1-269-8667	End Cap
183165	1-269-8668	Guide for Wooded Door
183166	1-269-8669	Door Stop
183167	1-269-8670	Guide for Glass Door
183168	1-269-8671	Top Mount Stick Sliding Door Roller for Wood, SS304 Satin
183170	1-269-8672	Top Mount Dual Wheel Sliding Door Roller for Wood, SS304 Satin
183171	1-269-8673	Top Mount Spoke Wheel Sliding Door Roller for Wood, SS304 Satin
183172	1-269-8674	Strap Stick Sliding Door Roller for Wood and Glass, SS304 Satin
183173	1-269-8675	Strap Dual Wheel Sliding Door Roller for Wood and Glass, SS304 Satin
183176	1-269-8676	Strap Triangle Sliding Door Roller for Wood and Glass, SS304 Satin
183179	1-269-8677	Flat Rail Stick Sliding Door Carrier for Wood SS304 Satin
183180	1-269-8678	Flat Rail Door Stopper Left, SS304 Satin
183181	1-269-8679	Flat Rail Door Stopper Right, SS304 Satin
183182	1-269-8680	Flat Rail Anti Jump
181901	1-269-8663	Round Rail Connector SS304 Satin Nickel
181902	1-269-8664	Flat Rail Connector SS304 Satin Nickel





## 9400 SERIES BARN DOOR HARDWARE

### 9432 PACKAGED SETS

#### Top Mount Stick 2m SS Round Rail

##### FEATURES

Materials: 304 stainless steel track and hangers with nylon coated rollers

- System Includes:
- Stainless steel track (78" or 96") with two end caps
  - Hangers with wall brackets
  - One door bottom guide
  - Two track stops
  - Mounting and installation hardware

Standards: Meets performance requirements of ANSI/BHMA 156.14 (Grade 1) for sliding doors by exceeding 100,000 cycles



##### DOOR SPECIFICATIONS

- Door weight up to 250 lbs.
- Wood doors 1-3/4" thick (top-mount hangers)
- Door bottom 3/8" undercut



### 9433 PACKAGED SETS

#### Dual Wheel 2m SS Round Rail

##### FEATURES

Materials: 304 stainless steel track and hangers with nylon coated rollers

- System Includes:
- Stainless steel track (78" or 96") with two end caps - available in round or flat rail
  - Hangers with wall brackets
  - One door bottom guide
  - Two track stops
  - Mounting and installation hardware

Standards: Meets performance requirements of ANSI/BHMA 156.14 (Grade 1) for sliding doors by exceeding 100,000 cycles



##### DOOR SPECIFICATIONS

- Door weight up to 250 lbs.
- Wood doors 1-3/4" thick (top-mount hangers)
- Door bottom 3/8" undercut





## 9400 SERIES BARN DOOR HARDWARE

### 9435 PACKAGED SETS

#### Top Mount Spoke Wheel 2m SS Round Rail

##### FEATURES

- Materials: 304 stainless steel track and hangers with nylon coated rollers
- System Includes:
  - Stainless steel track (78" or 96") with two end caps - available in round or flat rail
  - Hangers with wall brackets
  - One door bottom guide
  - Two track stops
  - Mounting and installation hardware
- Standards: Meets performance requirements of ANSI/BHMA 156.14 (Grade 1) for sliding doors by exceeding 100,000 cycles



##### DOOR SPECIFICATIONS

- Door weight up to 250 lbs.
- Wood doors 1-3/4" thick (top-mount hangers)
- Door bottom 3/8" undercut

### 9436 PACKAGED SETS

#### Face Mount Stick 2m SS Round Rail

##### FEATURES

- Materials: 304 stainless steel track and hangers with nylon coated rollers
- System Includes:
  - Stainless steel track (78" or 96") with two end caps - available in round or flat rail
  - Hangers with wall brackets
  - One door bottom guide
  - Two track stops
  - Mounting and installation hardware
- Standards: Meets performance requirements of ANSI/BHMA 156.14 (Grade 1) for sliding doors by exceeding 100,000 cycles



##### DOOR SPECIFICATIONS

- Door weight up to 250 lbs.
- Wood doors 1-1/4" - 1-3/4" thick
- Door bottom 3/8" undercut
- Glass doors 3/8" to 1/2" thick





## 9400 SERIES BARN DOOR HARDWARE

### 9437 PACKAGED SETS

#### Face Mount Dual Wheel 2m SS Round Rail

##### FEATURES

- Materials: 304 stainless steel track and hangers with nylon coated rollers
- System Includes:
- Stainless steel track (78" or 96") with two end caps - available in round or flat rail
  - Hangers with wall brackets
  - One door bottom guide
  - Two track stops
  - Mounting and installation hardware
- Standards: Meets performance requirements of ANSI/BHMA 156.14 (Grade 1) for sliding doors by exceeding 100,000 cycles



##### DOOR SPECIFICATIONS

- Door weight up to 250 lbs.
- Wood doors 1-1/4" - 1-3/4" thick
- Door bottom 3/8" undercut
- Glass doors 3/8" to 1/2" thick



### 9438 PACKAGED SETS

#### Face Mount Triangle 2m SS Round Rail

##### FEATURES

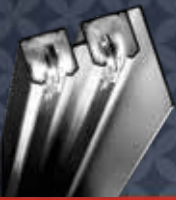
- Materials: 304 stainless steel track and hangers with nylon coated rollers
- System Includes:
- Stainless steel track (78" or 96") with two end caps - available in round or flat rail
  - Hangers with wall brackets
  - One door bottom guide
  - Two track stops
  - Mounting and installation hardware
- Standards: Meets performance requirements of ANSI/BHMA 156.14 (Grade 1) for sliding doors by exceeding 100,000 cycles



##### DOOR SPECIFICATIONS

- Door weight up to 250 lbs.
- Wood doors 1-1/4" - 1-3/4" thick
- Door bottom 3/8" undercut
- Glass doors 3/8" to 1/2" thick





## 9400 SERIES BARN DOOR HARDWARE

### 9462 PACKAGED SET

#### Flat Stick Strap 2m SS Round Rail

##### FEATURES

Materials: 304 stainless steel track and hangers with nylon coated rollers

System Includes:

- Stainless steel track (72" or 96") with two end caps - available in round or flat rail
- Hangers with wall brackets
- One door bottom guide
- Two track stops
- Mounting and installation hardware

Standards: Meets performance requirements of ANSI/BHMA 156.14 (Grade 1) for sliding doors by exceeding 100,000 cycles

##### DOOR SPECIFICATIONS

- Door weight up to 250 lbs.
- Wood doors 1-3/8" thick
- Door bottom 3/8" undercut





## 9400 SERIES BARN DOOR HARDWARE - CONESTOGA SERIES

### FEATURES

- Durable powder-coated black rail and Conestoga Style, Barn Door Hangers
- Conforms to ANSI BHMA A156.14-2007
- Grade 1 for sliding doors by exceeding 100,000 cycles in operation

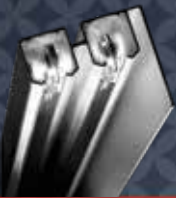
### SPECIFICATIONS

- Door weight up to 250 lbs.
- Wood doors up to 1-3/4" thick

### SLIDING BARN DOOR



Stock Number	Hager Part Number	Description
<b>Conestoga Barn Door</b>		
<b>Rail Only</b>		
186242	9450-48	48" Black Powder Coated, Flat Rail
186243	9450-72	72" Black Powder Coated, Flat Rail
186251	9450-96	96" Black Powder Coated, Flat Rail
<b>Hanger Kits Less Rail, All Kits Include two carriers, stops, floor guide and rail mounting brackets and fasteners</b>		
188467	9452	3" Black Powder Coated Hook Carrier Kit Less Rail
188468	9453	5" Black Powder Coated Hook Carrier Kit Less Rail
188469	9454	3" Black Powder Coated Strap Carrier Kit Less Rail
188470	9455	3" Black Powder Coated Top Mount Carrier Kit Less Rail
<b>Optional Components</b>		
<b>Privacy Latch and Pull</b>		
186296	1-269-8693	Sliding Door Privacy Latch & Strike Plate
186299	1-269-8694	4" x 1-3/4" x 7/16" Flush Pull
<b>Accessories</b>		
186289	1-269-8689	Bracket Kit: Includes 1 Wall Mount Bracket with Fastener
186290	1-269-8690	Stop Kit: Includes 2 End Stops with Fasteners
186292	1-269-8691	Splice Kit: Includes Splice Components and Fasteners for Joint Rails



## 9400 SERIES BARN DOOR HARDWARE - CONESTOGA SERIES - HOW TO ORDER

### IMPORTANT:

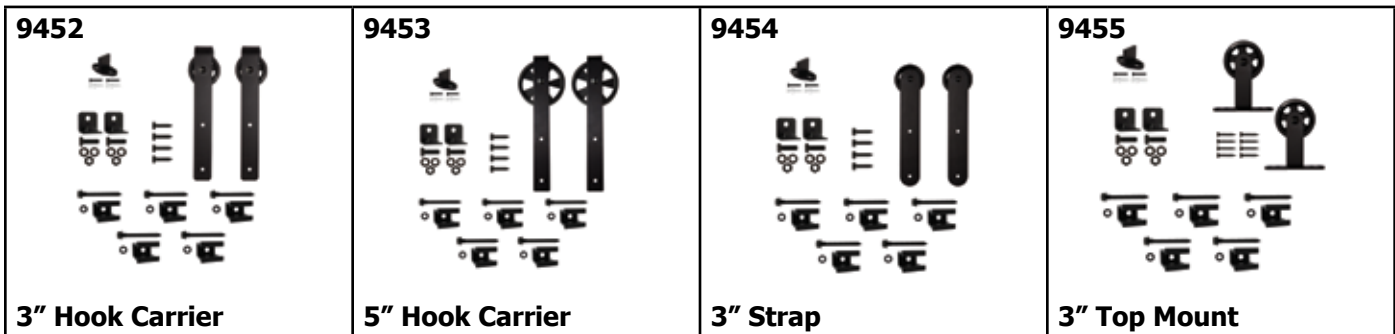
- 1.Track is ordered separately from hardware kit.
- 2.Track and Carrier Hardware are shipped in separate cartons.

### Example:

#### Single Door Solution:

- 1) **9450 Track:** Specify length (48", 72" or 96").
- 2) **Carrier Hardware Kit:** Specify style – Includes all mounting hardware

9450 - 48  
9450 - 72  
9450 - 96

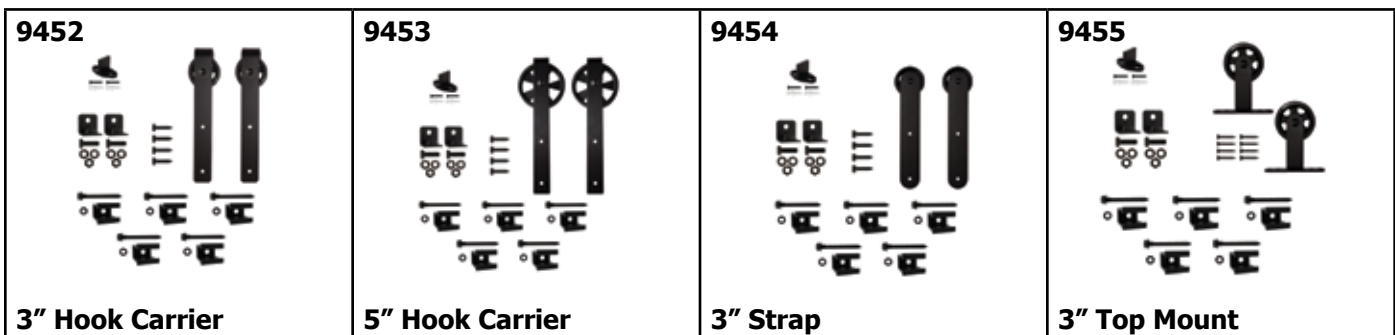


#### Bi-Part Door Solution:

If using two doors that are 3' wide, order a 6' track per door, for a total of 12'. This allows the doors to clear the door opening when in the open position. Order one carrier hardware kit per door and one Splice Kit.

#### To Order:

- 1) **9450 Track:** Specify quantity and length.
- 2) **Carrier Hardware Kit:** Specify quantity and carrier style. Example: Order 2 of part number 9453, 5" hook carrier style – Includes all mounting hardware.



- 3) **Splice Kit:** Order 1 of part number 1-269-8691 Flat Rail Splice Kit.





## 9400 SERIES BARN DOOR HARDWARE - CONESTOGA SERIES

### 9450 Durable Black Powder-Coated Rail

#### FEATURES

Materials:	Durable powder-coated black aluminum
Available in:	48", 72" and 96" lengths



### 9452 3" Hook Carrier (Rail Not Included)

#### FEATURES

Materials:	Durable powder-coated black aluminum
System Includes:	<ul style="list-style-type: none"> <li>• Two carriers</li> <li>• Two stops</li> <li>• Floor guide</li> <li>• Rail mounting brackets and fasteners</li> </ul>
Standards:	Meets performance requirements of ANSI/BHMA 156.14 (Grade 1) for sliding doors by exceeding 100,000 cycles



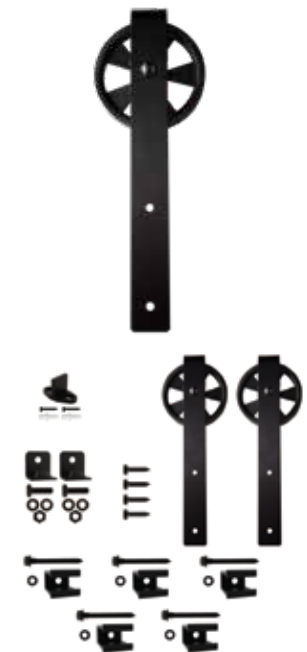
#### DOOR SPECIFICATIONS

- Door weight up to 250 lbs.
- Wood doors up to 1-3/4" thick

### 9453 5" Hook Carrier (Rail Not Included)

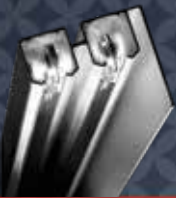
#### FEATURES

Materials:	Durable powder-coated black aluminum
System Includes:	<ul style="list-style-type: none"> <li>• Two carriers</li> <li>• Two stops</li> <li>• Floor guide</li> <li>• Rail mounting brackets and fasteners</li> </ul>
Standards:	Meets performance requirements of ANSI/BHMA 156.14 (Grade 1) for sliding doors by exceeding 100,000 cycles



#### DOOR SPECIFICATIONS

- Door weight up to 250 lbs.
- Wood doors up to 1-3/4" thick



**9400 SERIES BARN DOOR HARDWARE - CONESTOGA SERIES**

**9454  
3" Strap Carrier (Rail Not Included)**

**FEATURES**

- |                  |  |
|------------------|--|
| Materials:       | Durable powder-coated black aluminum   |
| System Includes: | <ul style="list-style-type: none"> <li>• Two carriers</li> <li>• Two stops</li> <li>• Floor guide</li> <li>• Rail mounting brackets and fasteners</li> </ul> |
| Standards:       | Meets performance requirements of ANSI/BHMA 156.14 (Grade 1) for sliding doors by exceeding 100,000 cycles   |

**DOOR SPECIFICATIONS**

- Door weight up to 250 lbs.
- Wood doors up to 1-3/4" thick



**9455  
3" Top Mount Carrier (Rail Not Included)**

**FEATURES**

- |                  |  |
|------------------|--|
| Materials:       | Durable powder-coated black aluminum   |
| System Includes: | <ul style="list-style-type: none"> <li>• Two carriers</li> <li>• Two stops</li> <li>• Floor guide</li> <li>• Rail mounting brackets and fasteners</li> </ul> |
| Standards:       | Meets performance requirements of ANSI/BHMA 156.14 (Grade 1) for sliding doors by exceeding 100,000 cycles   |

**DOOR SPECIFICATIONS**

- Door weight up to 250 lbs.
- Wood doors up to 1-3/4" thick







## 9400 SERIES BARN DOOR HARDWARE - CONESTOGA SERIES - OPTIONAL COMPONENTS



**1-269-8689**  
Bracket Kit



**1-269-8693**  
Privacy Latch



**1-269-8690**  
Stop Kit



**1-269-8694**  
Flush Pull



**1-269-8691**  
Splice Kit

### 9458 Series Barn Door Privacy Lock

#### FEATURES

- Non-handed.
- 2-1/4" or 3-1/2" backset options (see specifications for corresponding wall thickness).
- Drive in bolt casing diameter: 1" (25mm).
- Lock bolt: 1/2" (13mm) diameter, stainless Steel material.
- Lock bolt has 1" projection allowing up to 1/2" door to wall gap. Extra spacer ring accommodates up to 3/4" gap between barn door and wall.
- 1-1/4" diameter spring-loaded dust proof strike provides ample space to receive 1/2" bolt, allows easy locking from privacy side. Strike mounted in barn door for standard door.
- 1/4" diameter emergency release feature allows bolt to be unlocked from outside under emergency situation. Simple design, minimum aesthetic impact on door surface.
- ADA Compliant thumb turn for commercial applications.

Standards:

#### DOOR SPECIFICATIONS

- For 1-3/8" (35mm) to 1-3/4"(40mm) thick doors standard.



#### 9458 Series Available Options

94582D-32D	Round ADA TT Stainless 2-1/4" Backset
94582D-10B	Round ADA TT Oil Rubbed Bronze 2-1/4" Backset
945835-32D	Round ADA TT Black 2-1/4" Backset
945835-32D	Round ADA TT Stainless Steel 3-1/2" Backset
945835-10B	Round ADA TT Oil Rubbed Bronze 3-1/2" Backset
945835-BLK	Round ADA TT Black 3-1/2" Backset



## 9400 SERIES BARN DOOR HARDWARE - eCONESTOGA SERIES

### Durable Black Powder-Coated Rail

#### FEATURES

- Materials: Durable powder-coated black aluminum
- Available in:
- 72" and 96" track lengths
  - 1-269-8648 - 72"
  - 1-269-8647 - 96"



### 9456 Top Mount Track Kit

#### FEATURES

- Materials:
- Durable powder-coated black aluminum
  - Black steel rail (72" or 96")
- System Includes:
- Two carriers
  - Two stops
  - Floor guide
  - Rail mounting brackets and fasteners
- Standards:
- Meets performance requirements of ANSI/BHMA 156.14 (Grade 1) for sliding doors by exceeding 100,000 cycles



#### DOOR SPECIFICATIONS

- Door weight up to 250 lbs.
- Wood doors up to 1-3/4" thick

### 3" Hook Track Kit

#### FEATURES

- Materials:
- Durable powder-coated black aluminum
  - Black steel rail (72" or 96")
- System Includes:
- Two carriers
  - Two stops
  - Floor guide
  - Rail mounting brackets and fasteners
- Standards:
- Meets performance requirements of ANSI/BHMA 156.14 (Grade 1) for sliding doors by exceeding 100,000 cycles



#### DOOR SPECIFICATIONS

- Door weight up to 250 lbs.
- Wood doors up to 1-3/4" thick

### OPTIONAL: 1-269-8646 Flat Rail Soft Close Mechanism

- Details:
- Gently guides door to open or closed position
  - Door weight up to 176 lbs.



### OPTIONAL: 1-269-8650 Spring-Loaded Cushion Stop

- Details:
- Description: Spring loaded cushion stop
  - Finish/material: 32D
  - Door thickness: Up to 1-3/4" wood door
  - Gently absorbs the hanger and cushions the landing of the door



# Optional Components



## 330D

### Pocket Door Latch

**Certification:** Meets ANSI A156.14 for D0821.1

**Size:** 2-3/4" x 2-1/2"  
(70 mm x 64 mm)

**Finger Piece:** 1-3/8" (35 mm) extension

**Materials:** Brass

**Finishes:** US3, US5, US10B, US15, US15A, US19, US26, US26D

**Fasteners:** Two (2) #6 x 5/8" OPHWS; (2) #6 x 3/4" FPHWS

**Notes:** For use with 1-3/8" to 1-3/4" (35 mm to 45 mm) door



## 1741

### Full Mortise, Five Knuckle, Plain Bearing Hinge

- Steel with steel pin (ANSI A5134)
- Reversible
- Square corners
- Removable pin
- 3.5" x 3.5"
- US2D



## 2610

### Flush Cup Finger Pull

**Overall Diameter:** 31/32" (25 mm)

**Finger Pull Diameter:** 3/4" (19 mm)

**Depth:** 5/16" (8 mm)

**Projection:** 1/32" (.8 mm)

**Materials:** Solid brass

**Finishes:** US3, US4, US5, US10A, US15, US15A, US26, US26D, ABA

**Notes:**

Built-in prong design eliminates the need for screws or brads



## 330L

### Pocket Door Privacy Latch

**Size:** 2-3/4" x 2-1/2"  
(70 mm x 64 mm)

**Finger Piece:** 1-3/8" (35 mm) extension

**Strike Size:** 1" x 2-1/4" (25 mm x 57 mm)

**Materials:** Brass

**Finishes:** US3, US5, US10B, US15, US15A, US19, US26, US26D

**Fasteners:** Two (2) #6 x 5/8" OPHWS; (2) #6 x 3/4" FPHWS

**Notes:** For use with 1-3/8" door



## 2630

### Flush Cup Pull

**Overall Diameter:** 2-7/16" (62 mm)

**Finger Pull:** 2-1/16" (52 mm) diameter

**Depth:** 11/32" (9 mm)

**Projection:** 3/32" (2 mm)

**Materials:** Solid brass

**Finishes:** US3, US4, US5, US10A, US15, US15A, US26, US26D, ABA

**Notes:**

Built-in prong design eliminates the need for screws or brads.



## 330M

### Pocket Door Privacy Latch

**Certifications:** Meets ANSI A156.14 for D0831

**Size:** 2-3/4" x 2-1/2"  
(70 mm x 64 mm)

**Finger Piece:** 1-3/8" (35 mm) extension

**Strike Size:** 1" x 2-1/4" (25 mm x 57 mm)

**Materials:** Brass

**Finishes:** US3, US5, US10B, US15, US15A, US19, US26, US26D

**Fasteners:** Two (2) #6 x 5/8" OPHWS; (2) #6 x 3/4" FPHWS

**Notes:** For use with 1-3/4" door



## 9111

### Fixed Bottom Door Guide

**Materials:** Zinc plated steel with bronze roller

**Guide:** 2" x 3/4" x 3/32"  
(51 mm x 19 mm x 2.4 mm)

**Roller:** 1-7/32" x 1/2"  
(14 mm x 13 mm)

**Notes:**

- Door mortising is not required
- Use with 9122 guide channel

## OPTIONAL COMPONENTS



### 9113

#### Stop

Materials: Zinc plated steel and rubber  
 Stop: 1-5/8" x 1-1/2" x 5/8" x  
 1-3/4" (41 mm x 38 mm x  
 16 mm x 45 mm)

Notes: Use with 9105 hanger



### 9169

#### Top Pivot Assembly

Materials: Zinc plated steel  
 Top Pivot: 1" x 3-1/2" x 1-7/16"  
 (25 mm x 89 mm x 37 mm)

Notes: Inserts into 9155 top pivot  
 clamp assembly



### 9114

#### Bottom Guide Rail

Materials: Aluminum  
 Guide: 7/8" x 1/2" (22 mm x 13 mm)  
 Lengths: 72" (1829 mm)  
 96" (2438 mm)  
 144" (3658 mm)

Notes:
 

- Door bottom prep requires 1/4" (6 mm) wide kerf and 9/16" (14 mm) depth
- Pre-punched for use with flat head screws



### 9200\* | 9201\*\*

#### Single Wheel Hanger

Materials: Zinc plated steel with  
 molded Celcon wheels

Gauge: 0.075" (2 mm)

Wheel: 7/8" (22 mm) diameter

Notes:
 

- For use on doors weighing up to 60 lbs (27 kg)
- For use with 9810, 9820, and 9840 track
- Side mounted with slot adjust offset
- Hanger is stamped "A" or "B" for easy identification

 \* 9200 is A offset of 3/8" (9.5 mm)  
 \*\* 9201 is B offset of 11/16" (17.5 mm)



### 9121

#### Adjustable Bottom Door Guide

Materials: Zinc plated steel with bronze roller  
 Guide: 1" x 3-1/2" x 3/16"  
 (25 mm x 89 mm x 5 mm)

Post: 2-1/2" x 5/16" (64 mm x 8 mm)

Notes: Use with 9122 guide channel



### 9202\* | 9203\*\*

#### Two Wheel Hanger

Materials: Zinc plated steel with  
 molded Celcon wheels

Gauge: 0.075" (2 mm)

Wheel: 7/8" (22 mm) diameter

Notes:
 

- For use on doors weighing up to 75 lbs (34 kg)
- For use with 9810, 9820, and 9840 track
- Side mounted with slot adjust offset
- Hanger is stamped "A" or "B" for easy identification

 \* 9202 is B offset of 11/16" (17.5 mm)  
 \*\* 9203 is A offset of 3/8" (9.5 mm)



### 9122

#### Bottom Guide Channel

Materials: Extruded aluminum  
 Gauge: 0.093 (2.4 mm)  
 Lengths: 48" (1219 mm) to 192"  
 (4877 mm)

Channel: 5/8" x 3/4"  
 (16 mm x 19 mm)

Notes:
 

- Screws not provided
- Mortised into floor or surface mounted



### 9220

#### Bi-Fold Door Hinge

Materials: Steel with bright zinc finish  
 Hinge: 3" x 1" (76 mm x 25 mm)  
 hole

Hole Locations: 1/2" (13 mm) from the  
 center lines of holes to  
 center of barrel

Notes: Non-mortise and easy  
 to install



## OPTIONAL COMPONENTS



### 9262

#### Pocket Door Keyed Lock

- Materials: Steel
- Notes:
- For doors 1-3/8" (35 mm) to 1-3/4" (44 mm) thick
  - Lock cylinder fits in one 1" (25 mm) hole
  - Available keyed alike



### 9264

#### Keyed Lock

- Materials: Steel
- Notes:
- Lock cylinder fits 1" (25 mm) hole
  - Available keyed alike



### 9351

#### Guide

- Materials: High density polyethylene
- Guide: 4-9/16" x 1" x 11-3/16" (116 mm x 25 mm x 46 mm)
- Notes: One piece fixed guide for 1-3/8" (35 mm) doors



### 9353

#### Adjustable Door Guide

- Materials: High density polyethylene
- Notes: Adjustable guide from 3/4" (19 mm) to 1-3/8" (35 mm)



### 9354

#### 3/4" (19 mm) Riser

- Materials: Steel with bright zinc finish
- Rise: 3/4" (19 mm)
- Notes: For mounting 9351 and 9353 floor guides over carpeting



### 9558

#### Wood Knob

- Diameter: 1-1/2" (38 mm)
- Materials: Solid wood
- Notes: Will accept paint or stain



### 9559

#### Aligner

- Materials: Steel with brass-tone dichromate finish
- Notes:
- Keeps lead doors aligned when closed
  - Use one on each lead door



### 9572

#### 4-Wheel Hanger and Door Bracket

- For 100 lbs (45 kg) doors
- Materials: Steel with bright zinc
- Wheel: 7/8" (22 mm) diameter
- Notes:
- Wheels are self aligning to allow consistent contact with track
  - Pre-lubricated Celcon wheels
  - Includes wrench
  - For use on doors weighing up to 100 lbs (45 kg) per door
  - For use with 9601, 9602, and 9603 track



### 9575

#### Parts Bag

- Includes four (4) 9572 hangers with quick release top mount plate, one (1) 9909 guide
- Note: Up to 125 lbs (57 kg) per door



### 9605

#### 4-Wheel Hanger with Top Mount Plate

- Materials: Steel with brass-tone dichromate finish
- Wheels: 7/8" (22 mm) diameter
- Notes:
- Self aligning to allow consistent contact with track
  - Pre-lubricated Celcon wheels mounted on steel ball bearing shafts
  - Can be used on pivot set
  - Up to 75 lbs (34 kg) per door
  - Use in conjunction with 9601, 9602, or 9603 track



### 9606

#### 4-Wheel Ball Bearing Hanger with Top Mount Plate

- Materials: Steel with brass-tone dichromate finish
- Wheels: 7/8" (22 mm) diameter
- Notes:
- Self aligning to allow consistent contact with track
  - Pre-lubricated Celcon wheels mounted on steel ball bearing shafts
  - Up to 75 lbs (34 kg) per door
  - Use with 9601, 9602, or 9603 track

## OPTIONAL COMPONENTS



### 9610

#### Replacement Top Mount Plate

Materials: Bright zinc plated steel  
 Gauge: 1/8" (3 mm)  
 Size: 1-3/8" (35 mm) x 2-13/16" (72 mm)

Notes:
 

- Replacement for four wheel hangers 9605, 9606, 9575, 9824, 9825 and 9827



### 9634

#### Pocket Door Adapter Kit

Materials: Galvanized steel and wood shims

Clearance: 1/8" (3 mm) on each side of a 1-3/4" (44 mm) door

Notes:
 

- Used with 1-3/4" (44 mm) doors by allowing additional clearance between door and jamb
- Includes wider floor plates and shims for spacing split studs for an additional 3/16" (4.8 mm) on each side of a 1-3/4" (44 mm) door



### 9639

#### Double Pocket Door Adapter Kit

Materials: Zinc plated steel and rubber bumper stops

Notes:
 

- Joins two frames in the middle of the doorway
- For joining 9629, 9630, 9631 or 9850 pocket door kits
- Fits both KD and Built Up frames
- Lag bolt for attaching to rough header
- Bumpers included to stop doors in center of doorway



### 9680

#### Parts Bag

Includes four (4) 9606 ball bearing hangers and one (1) 9909 guide  
 Note: Up to 150 lbs (68 kg) per door



### 9709

#### Aluminum Fascia

Materials: Extruded aluminum  
 Gauge: 0.062" (1.6 mm)  
 Lip: 5/8" (16 mm)  
 Fascia: 2-3/4" (70 mm)  
 Lengths: 48" (1219 mm) to 144" (3658 mm)

Notes:
 

- **Grooved fascia for painting**
- Pre-punched holes for easy installation



### 9815

#### Bumper Stop

Materials: Zinc plated steel and rubber

Notes:
 

- Fits all Hager track styles except 9101
- Screws onto track
- Included in bi-fold sets 9570 and 9890



### 9865

#### Flush Cup Pull

Overall Diameter: 1-31/32" (50 mm)  
 Finger Pull Diameter: 1-19/32" (41 mm)  
 Depth: 11/32" (9 mm)  
 Projection: 5/64" (2 mm)  
 Materials: Tan color ABS plastic

Notes:
 

- Built-in prong design eliminates the need for screws or brads



### 9877

#### Door Guide

Materials: Plastic

Notes:
 

- For doors 1-3/8" (35 mm) to 1-3/4" (44 mm) thick
- Two pieces required per door



### 9880

#### Door Stop

Materials: Zinc plated steel and rubber  
 Gauge: 0.090" (2.3 mm)  
 Stop: 1-1/4" x 1-1/4" x 7/8" (32 mm x 32 mm x 22 mm)

Notes:
 

- For doors up to 175 lbs (79 kg)
- Keeps rear door pull exposed
- Mounts on door
- Not included in sets



## OPTIONAL COMPONENTS



### 9881 Bumper

Materials: Rubber  
 Stop: 1/2" diameter x 3/8" deep  
 (13 mm x 10 mm)  
 Notes: With screws



### 9883 Two Piece Pocket Door Guide

Materials: Polyethylene  
 Guide: 1-3/16" x 3/4" x 1-1/8"  
 (21 mm x 19 mm x 29 mm)  
 Notes:
 

- Two pieces per door required
- Screws to jamb to guide door and prevent rubbing



### 9884 Pocket Door Edge Pull

Finger Pull Extends: 1-1/16" (27 mm)  
 Faceplate: 21/32" x 3-1/2"  
 (17 mm x 89 mm)  
 Materials: Die cast zinc  
 Finishes: US3  
 Fasteners: Two (2) #6 x 5/8" FPHWS  
 Notes: Ideal for narrow and standard door thicknesses.



### 9889 Non-Adjustable Floor Guide

Materials: Polyethylene  
 Guide: 2-3/8" x 2-1/2" x 7/8"  
 (60 mm x 64 mm x 22 mm)  
 Notes: For 1-3/8" (35 mm) doors



### 9909 Adjustable Guide

Materials: Steel with bright zinc  
 Posts: Molded Celcon/Nylon  
 Gauge: 0.060" (2 mm)  
 Guide: 4-7/8" x 1-5/8" x 1-3/16"  
 (124 mm x 41 mm x 30 mm)  
 Notes: For doors 3/4" to 1-3/4" (19 mm to 44 mm) thick with steel base, celcon, and nylon posts



### 9928 Reversible Side Mount Bracket

Materials: Steel with bright zinc  
 Posts: Molded Celcon/Nylon  
 Gauge: 0.060" (1.5 mm)  
 Guide: 4-7/8" x 1-5/8" x 1-3/16"  
 (124 mm x 41 mm x 30 mm)  
 Size: For 3/4" to 1-3/4" (19 mm to 44 mm) doors  
 Notes:
 

- Mounts at ends of track and every foot



### 3835 Small Case Deadlock

Thumbturn: Meet ADA Requirements, "No pinch," No grasp."  
 Lock Case: Heavy wrought steel with zinc dichromate finish - 4-5/16" x 3-9/16" x 1" (110 mm x 90 mm x 25 mm)  
 Armor Front: 1-1/4" x 5-5/8" x 7/32" (32 mm x 143 mm x 5 mm)  
 Keys: Two operating keys supplied per lock  
 Cylinder:
 

- Brass - keyed different - C keyway - Standard
- Other keying options, including keyed 6-pin, available from factory
- SFIC uncombined or combined, brass 6- or 7-pin sold separately
- Drilled 6-pin, keyed 5-pin - Standard
- Small Format Interchangeable Core housing available
- Schlage "L" cam - Standard

 Door Thickness:
 

- 1-3/8" - 2-1/2" (35 mm-64 mm) - steel door
- 1-3/4" - 2-1/2" (45 mm-64 mm)- wood door
- Must specify door thickness if greater than 1-3/4" (45 mm)

 Backset: 2-3/4" (70 mm) only  
 Deadbolt: 1" (25 mm) throw - stainless steel  
 Strike:
 

- 1 1/8" wide x 3 1/2" (29 mm x 89 mm) NO LIP

 Finishes: US26D  
 Functions: 35-Cylinder x Thumbturn, 36-Single Cylinder, 37-Double Cylinder, 38-Thumbturn Only, 39-Thumbturn w/ Emergency Key

