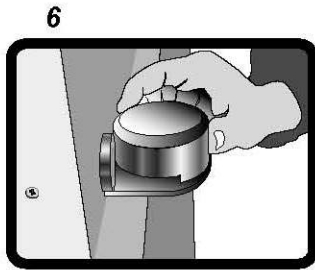
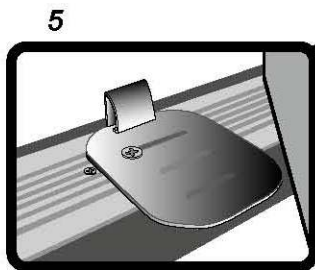
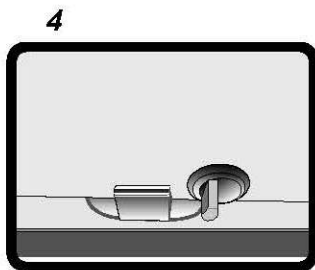
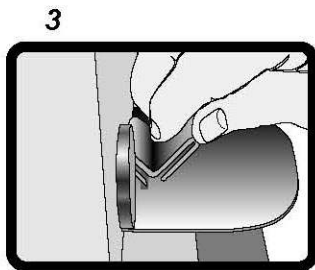
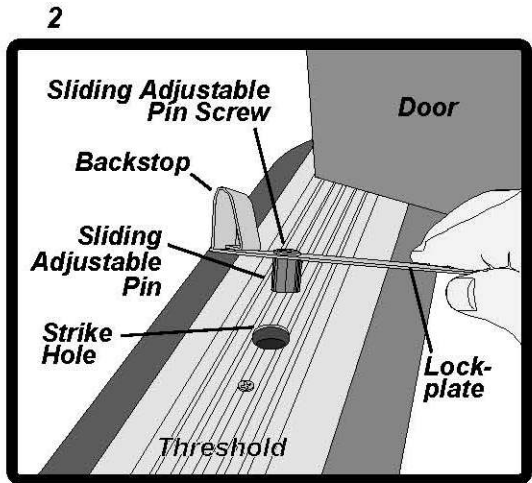
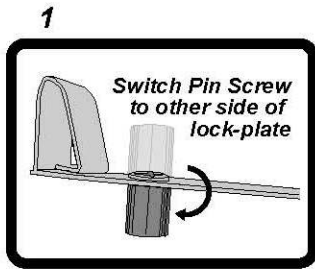


GKL PRODUCTS

# Herculock Emergency Door lock



## Instructions:

1. Switch/reverse the pin and screw so pin is on the bottom (Illustration 1)
- 2a. Insert the sliding pin into the strike hole (Illustration 2) and momentarily close the door to confirm that the backstop and hasp do not interfere with the lock cylinder(s) and or thumb turn on both sides of the door (Illustrations 3,4)
- 2b. Adjust plate and sliding locking pin as necessary
3. Close the door and insert the hasp into the exposed slot (Illustrations 3,5)
4. Install hockey-puck padlock. (Illustration 6)

Note: When placing the padlock over the hasp the cutout/step on the bottom of the padlock has to face squarely toward the door.

**GKL PRODUCTS**

Tel: 209 748-2400

sales@gklproducts.com

www.gklproducts.com

