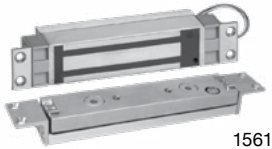


GWXT Auxiliary Locks CVXJ Burglary Resistant Electrically Operated Door Lock



UL10C Positive Pressure Compliant
UBC Classified in accordance with Uniform Building Code standard 7-2 "Fire Test for Door Assemblies"



1561



1562



1565



1566

FEATURES

- Door static and relock sensor, detects door is closed, at rest and aligned before relocking
- Automatic voltage sensing input
- Lateral and vertical alignment adjustment
- Floating armature with alloy steel shear tabs

ELECTRICAL SPECIFICATIONS

- 1561 and 1562: 650/350 mA @ 12/24VDC Auto-Sensing
- 1565 and 1566: 800/400 mA @ 12/24VDC Auto-Sensing

CONCEALED HI/SHEAR EMLOCK LIST

2,000 Lbs. Holding Force, 8" x 1-1/2" Lock

1561	1-5/8" depth, integrated electronics for 1-3/4" to 2" frames	848.00
1562	1-1/4" depth, with external electronics, for 1-1/4" to 1-3/4" frames	848.00

2,700 Lbs. Holding Force, 10-7/16" x 1-1/2" Lock

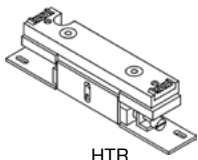
1565	1-5/8" depth, integrated electronics, for 1-3/4" to 2" frames	921.00
1566	1-1/4" depth, external electronics, for 1-1/4" to 1-1/2" frames	921.00

SPECIFY ARMATURE

Armature supplied with lock. Specify type required:

- 1565/1566** ITC, FTC or HTC
- 1561/1562** ITCM, FTCM or HTCM

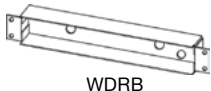
ITC	Standard mounting armature kit for aluminum and hollow metal doors with 7/8" to 1-1/8" deep top channels, wood doors and factory prepared hollow metal flush edge doors.	N/C
ITCM		
FTC	Mounting kit for field prepared horizontal mounting in hollow metal doors with flush edge.	N/C
FTCM		
HTC	Mounting kit for 1-15/16" deep herculite channels	N/C
HTCM		
HTR	Herculite top rail armature adjustment bracket for leading edge adjustments.	377.00
HTRM		



HTR

ADD ONS Add to List

BA	Bond sensor indicates proper armature contact and reduced holding power due to improper armature contact or tampering. SPDT 0.25 Amp maximum (<i>not available on 1562 and 1566</i>)	122.00
DPS	Door position switch indicates door open or closed. SPDT 0.25 Amp maximum.	56.00
L3	External LED status indicator, mounts separately through the frame and may be used to indicate lock is energized or wired to BAS bond sensor for door status.	19.00
WDRB	Wood door reinforcement box for 1565 and 1566	45.00
WDRBM	Wood door reinforcement box for 1561 and 1562	45.00



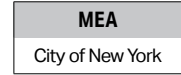
WDRB



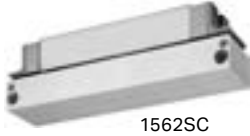
ANSI/BHMA A156.23
Grade 1



3774-0324:100



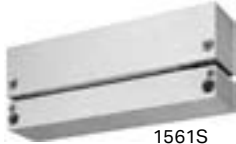
768-80-SA



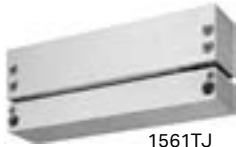
1562SC



1562SCHDB



1561S



1561TJ

SEMI-CONCEALED HI/SHEAR EMLOCKS LIST

2,000 Lbs. Holding Force, 8" x 1-1/2" x 1-1/4" Lock

1562SC	1-1/4" depth, with external electronics, for 1-1/4" to 1-3/4" For Hollow metal frames	998.00
1562SCHDB1/2	1-1/4" depth, with external electronics, for 1-1/4" to 1-3/4" frames For 1/2" Herculite full glass doors	1,237.00
1562SCHDB3/4	1-1/4" depth, with external electronics, for 1-1/4" to 1-3/4" frames For 3/4" Herculite full glass doors.	1,237.00

SURFACE MOUNT HI/SHEAR EMLOCKS LIST

2,000 Lbs. Holding Force, 8" x 1-3/4" x 1-3/4" Lock
For Hollow metal frames and wood or hollow metal doors

1561S	Surface mount for the push side of the door with integrated electronics	1,176.00
1561TJ	Surface top jamb mount for the pull side of the door with integrated electronics	1,176.00

STANDARD FINISH Add to List

V 628 Anodized Aluminum	N/C
Y Black Anodized	67.00
Powder Coat Finishes (a coating electrostatically applied to form a hard finish, that is tougher than conventional paint)	
X Dark Bronze Powder Coat Painted	89.00
C Brass Powder Coat Painted	67.00
Plated Finishes - Special order, no cancellation, no returns	
P 625 Bright Chrome	211.00
Q 626 Dull Chrome	211.00

OPTIONS Add to List

BA	Bond sensor indicates proper armature contact and reduced holding power due to improper armature contact or tampering. (Not Available with 1562 Models) SPDT 0.25 Amp maximum.	122.00
DPS	Door position switch indicates door open or closed. SPDT 0.25 Amp maximum.	56.00
L3	External LED status indicator, mounts separately through the frame and may be used to indicate lock is energized or wired to BAS bond sensor for door status.	19.00

Electromagnetic Locks