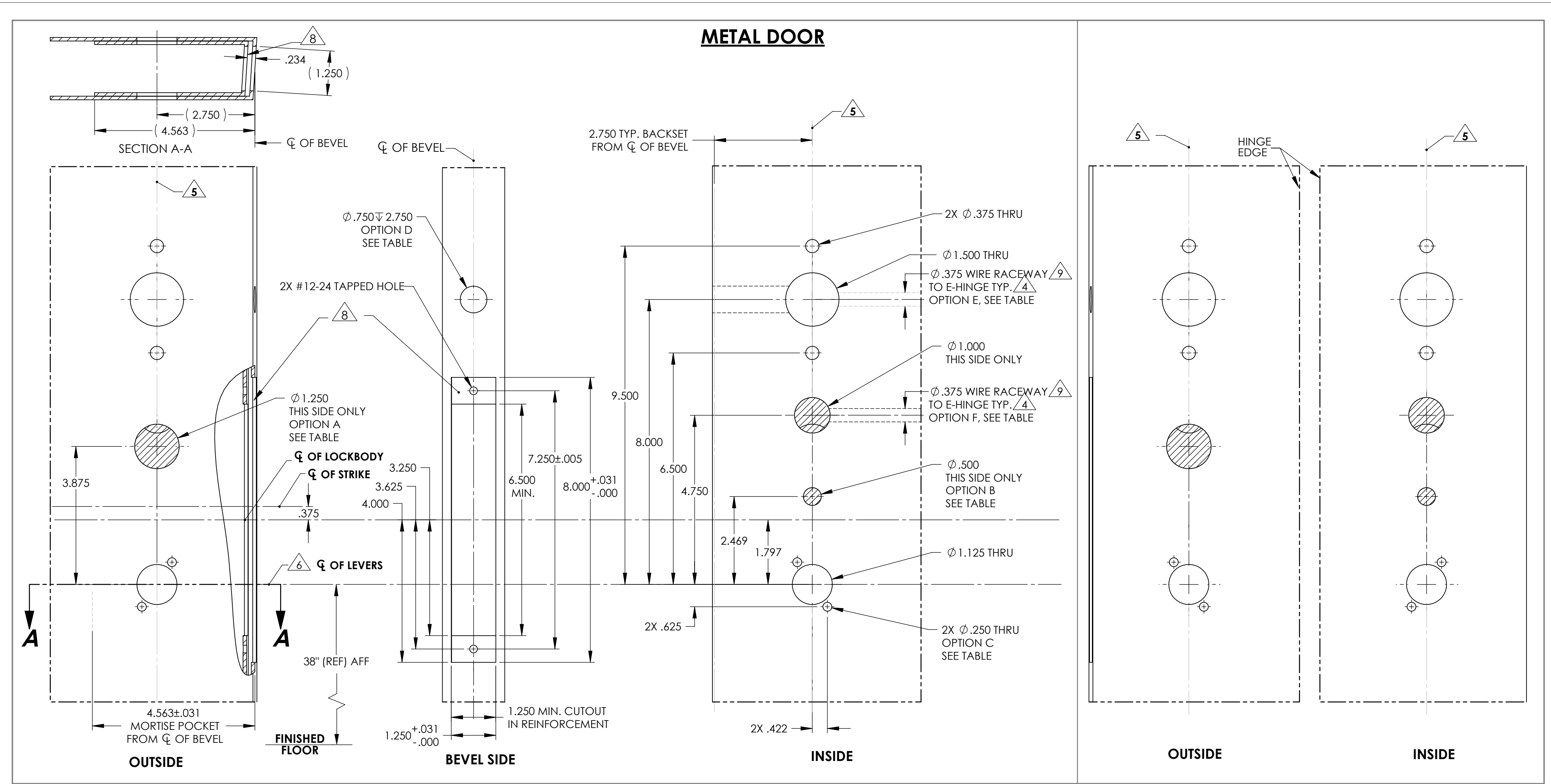
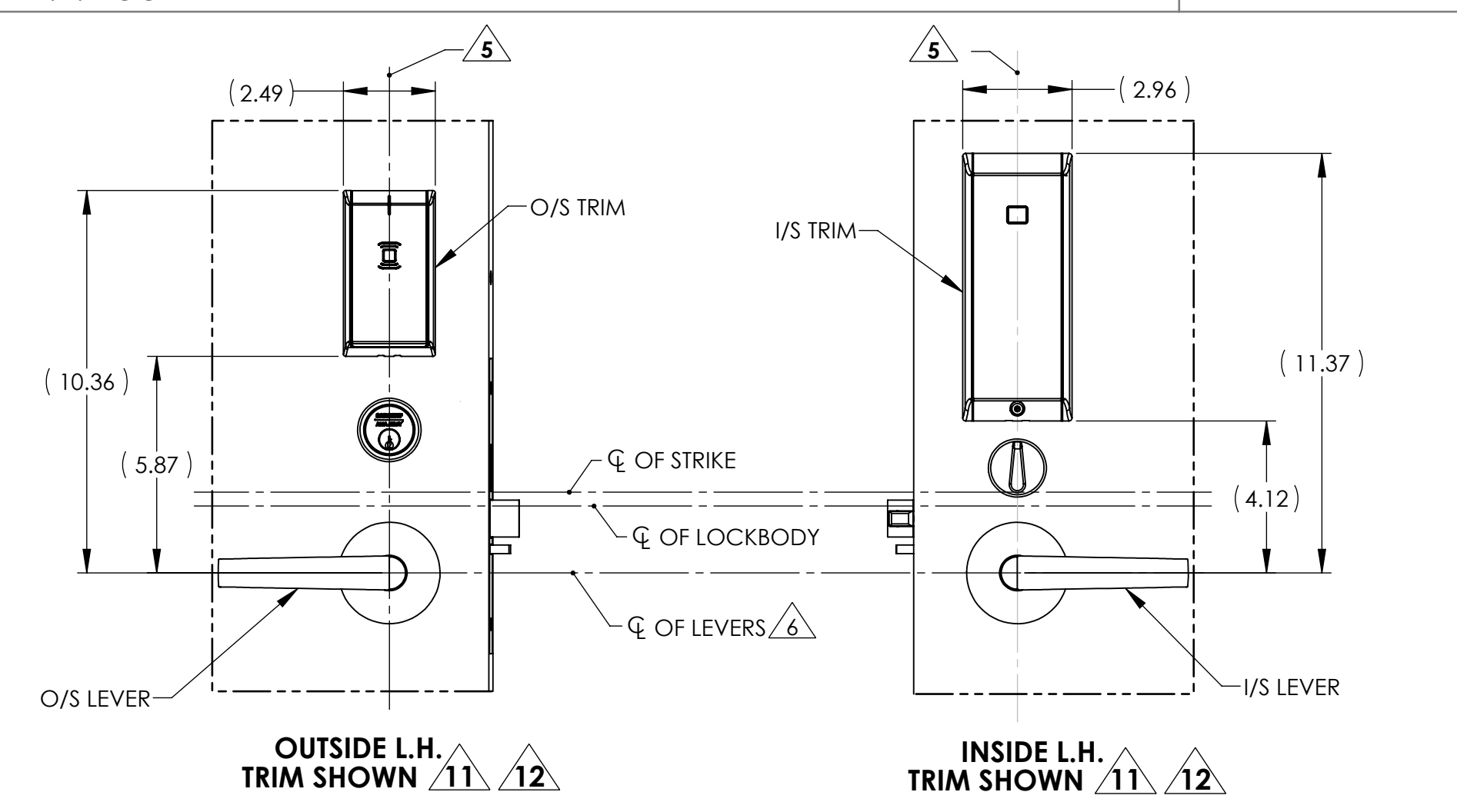


REVISIONS				
ZONE	REV.	DESCRIPTION	DATE	ENG
G5, 2-G5	3	REVISED PER EN 724942: 1. Ø 1.300 THRU HOLE WAS Ø 1.000 THRU	11/16/2020	RL



- NOTES:**
- DRAWING IS NOT TO SCALE. PREPARATION DETAILS ARE IN SUPPLEMENT TO ANSI/BHMA A156.115 AND/OR A115W.
  - REFERENCE STRIKE TEMPLATE FOR DETAILS TO PREPARE FRAME.
  - FOR ELECTROLYNX APPLICATIONS, REFER TO MCKINNEY TRANSFER DEVICE CATALOG.
  - VERTICAL CENTERLINE IS REFERENCED FROM THE CENTERLINE OF THE BEVEL. (INDUSTRY STANDARD BEVEL IS 1/8 INCH IN 2 INCHES.)
  - CONSULT THE AUTHORITY HAVING JURISDICTION (AHJ) TO VERIFY THE RECOMMENDED MOUNTING HEIGHT ABOVE THE FINISHED FLOOR (AFF). STANDARD TOLERANCE OF  $\pm$  .015 APPLIES TO ALL DOOR PREPARATION REQUIREMENTS, UNLESS OTHERWISE SPECIFIED.
  - DOOR REINFORCEMENT IS RECOMMENDED TO IMPROVE (SURFACE MOUNTED) FASTENER HOLDING POWER AND CRUSH RESISTANCE (WHEN THRU-BOLTING IS EMPLOYED). CONSTRUCTION TECHNIQUES SHOULD REFLECT INDUSTRY BEST PRACTICES (I.E. WDMA, SDI) AND AUTHORIZED METHODS WHERE LABEL SERVICE (I.E. UL, W-H) IS IN EFFECT.
  - WIRE RACEWAY AREAS SHOULD BE FREE OF OBSTRUCTIONS & SHARP EDGES TO PROTECT WIRES FROM CUTS & ABRASIONS.
  - CAREFULLY NOTE WHICH FEATURES ARE OPTIONAL, WHETHER THE FEATURE APPLIES TO BOTH SIDES OF THE DOOR AND/OR IF A DEPTH APPLIES.
  - MAXIMUM PRODUCT DIMENSIONS ARE SHOWN FOR THE PURPOSE OF VERIFYING FITMENT WITH DOOR FRAME STOPS, DOOR STILE SIZE & LIGHT/LOUVER KITS.
  - IF OPTIONAL LEVERS OR ROSES ARE USED REFERENCE THE RELATED PRODUCT DIMENSIONS TO VERIFY THE FITMENT REQUIREMENTS.



**AUTHORIZED PREFIXES**

IN

**OPTIONS TABLE**

OPTION	DESCRIPTION	USED FOR FUNCTIONS			
		7976 82276 R82276	7977 82277 R82277	7978 82278 R82278	7979 82279 R82279
A	CYLINDER	X	-	X	-
B	THUMB TURN	X	X	-	-
<b>USED FOR LOCK SERIES</b>					
C	TRIM POST	7900	8200	R8200	
D	EXTERNAL DPS	X	X	-	-
<b>USED FOR PREFIXES</b>					
E	HARD WIRE	91-	ALL OTHERS		
F	POWER OVER ETHERNET	X	ALL OTHERS		

**BACKSET DEFINITION**

**DOOR HANDING**

BACKSET: L.H., INSIDE, R.H.

DOOR HANDING: L.H., INSIDE, R.H.

TOP OF DOOR VERTICAL  $\phi$  OF BEVEL

**SARGENT ASSA ABLOY** Sargent Manufacturing Company  
100 Sargent Drive New Haven, CT 06511

DOOR MANUFACTURERS TEMPLATE: IN SERIES TRIM METAL DOOR 7900, 8200, OR R8200 MORTISE LOCK SHEET 1 OF 2

RELEASE DATE: NOV 2020

TEMPLATE NO. 4713\_3

**NOTICE TO PERSONS RECEIVING THIS DRAWING AND/OR TECHNICAL INFORMATION**

The material disclosed herein is the confidential and proprietary information of Sargent Manufacturing Company ("Company"). This drawing and/or technical information is issued in confidence for engineering information only and may not be reproduced or used to manufacture anything, including the items shown or referred to herein, without direct written permission from the Company. This drawing and/or technical information is the property of the Company and is loaned for mutual assistance to be returned when its purpose has been served or upon the request of the Company.

**UNLESS OTHERWISE SPECIFIED TOLERANCES**

X.XX	$\pm$ .03
X.XXX	$\pm$ .01
X.XXX	$\pm$ .005
ANGLES	$\pm$ 1°
FRACTIONS	$\pm$ 1/64
SURFACE FINISH	$\sqrt{}$

DRAWING COMPLES WITH ASME Y14.5M - 1994

INCH

MM

THIRD ANGLE PROJECTION

HEAT TREATMENT

SURFACE FINISH

MASS: 8.502 lb VOLUME: 209.992 in<sup>3</sup> SURFACE AREA: 914.139 in<sup>2</sup>

**ASSA ABLOY** Sargent Manufacturing Company New Haven, CT

**IN SERIES DOOR MFG TEMPLATE MORTISE LOCK**

DATE CREATED: 04/26/2018

DRAWN BY: RL

DESIGNED BY: TIM FEE

DOCUMENT ID: D000912629-000

DRAWING NUMBER (ALT ID): 4713

SCALE: 1:2

SIZE: D

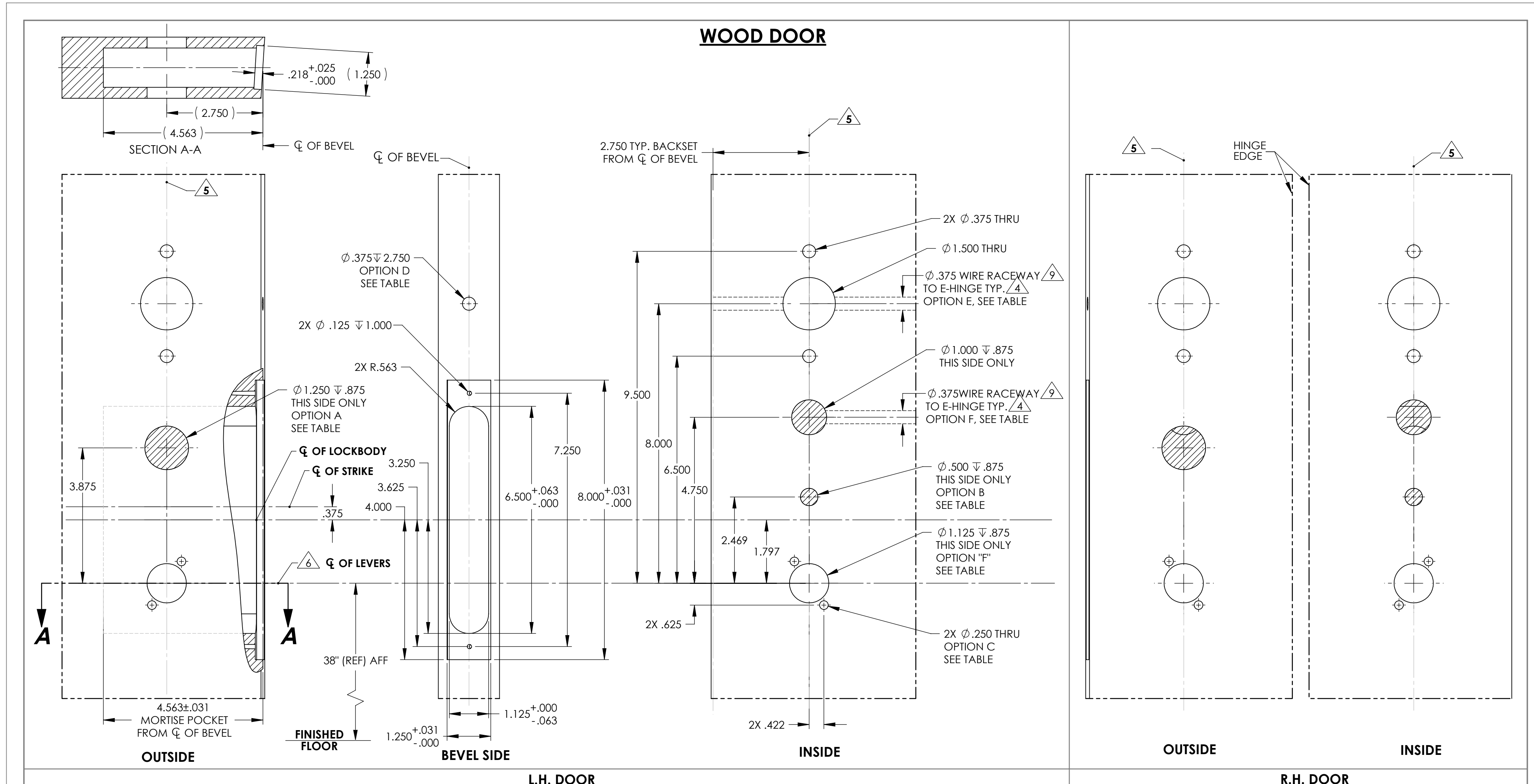
REV: 3

CONFIGURATION: Default

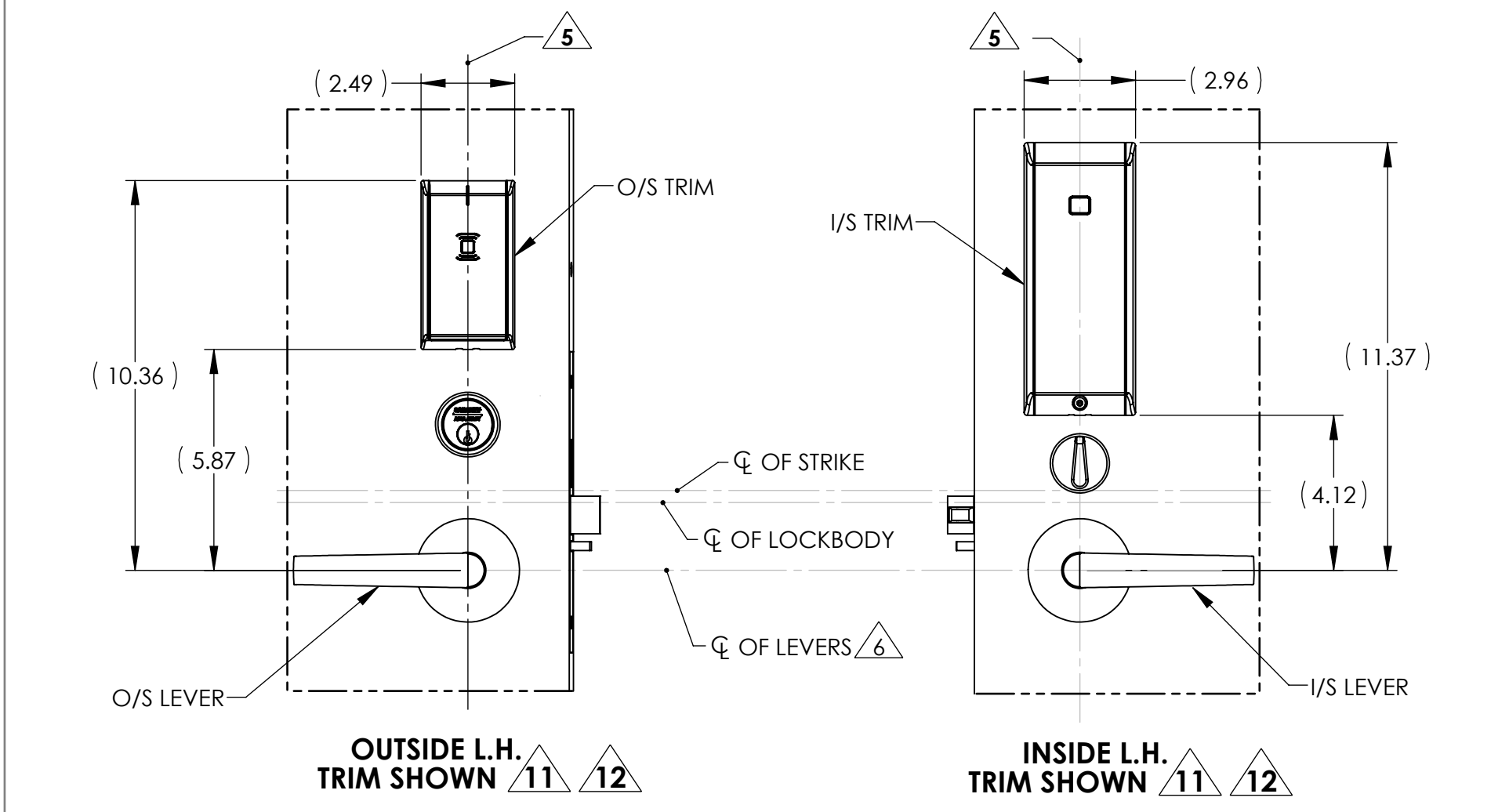
LEGACY ID:

SHEET 1 OF 2

REVISIONS				
ZONE	REV.	DESCRIPTION	DATE	ENG.
-	-	See METAL DOOR TEMPLATE	-	-



- NOTES:**
- DRAWING IS NOT TO SCALE. PREPARATION DETAILS ARE IN SUPPLEMENT TO ANSI/BHMA A156.115 AND/OR A115W.
  - REFERENCE STRIKE TEMPLATE FOR DETAILS TO PREPARE FRAME.
  - FOR ELECTROLYNX APPLICATIONS, REFER TO MCKINNEY TRANSFER DEVICE CATALOG.
  - VERTICAL CENTERLINE IS REFERENCED FROM THE CENTERLINE OF THE BEVEL. (INDUSTRY STANDARD BEVEL IS 1/8 INCH IN 2 INCHES.)
  - CONSULT THE AUTHORITY HAVING JURISDICTION (AHJ) TO VERIFY THE RECOMMENDED MOUNTING HEIGHT ABOVE THE FINISHED FLOOR (AFF). STANDARD TOLERANCE OF  $\pm$  .015 APPLIES TO ALL DOOR PREPARATION REQUIREMENTS, UNLESS OTHERWISE SPECIFIED.
  - DOOR REINFORCEMENT IS RECOMMENDED TO IMPROVE (SURFACE MOUNTED) FASTENER HOLDING POWER AND CRUSH RESISTANCE (WHEN THRU-BOLTING IS EMPLOYED). CONSTRUCTION TECHNIQUES SHOULD REFLECT INDUSTRY BEST PRACTICES (I.E. WDMA, SDI) AND AUTHORIZED METHODS WHERE LABEL SERVICE (I.E. UL, W-H) IS IN EFFECT.
  - WIRE RACEWAY AREAS SHOULD BE FREE OF OBSTRUCTIONS & SHARP EDGES TO PROTECT WIRES FROM CUTS & ABRASIONS.
  - CAREFULLY NOTE WHICH FEATURES ARE OPTIONAL, WHETHER THE FEATURE APPLIES TO BOTH SIDES OF THE DOOR AND/OR IF A DEPTH APPLIES.
  - MAXIMUM PRODUCT DIMENSIONS ARE SHOWN FOR THE PURPOSE OF VERIFYING FITMENT WITH DOOR FRAME STOPS, DOOR STILE SIZE & LIGHT/LOUVER KITS.
  - IF OPTIONAL LEVERS OR ROSES ARE USED REFERENCE THE RELATED PRODUCT DIMENSIONS TO VERIFY THE FITMENT REQUIREMENTS.



AUTHORIZED PREFIXES		IN			
<b>OPTIONS TABLE</b>					
OPTION	DESCRIPTION	7976	7977	7978	7979
		82276	82277	82278	82279
A	CYLINDER	X	-	X	-
B	THUMB TURN	X	X	-	-
<b>USED FOR LOCK SERIES</b>					
C	TRIM POST	7900	8200	R8200	
D	EXTERNAL DPS	X	X	-	
<b>USED FOR PREFIXES</b>					
E	HARD WIRE	91-		ALL OTHERS	
F	POWER OVER ETHERNET	220-		ALL OTHERS	
<b>BACKSET DEFINITION</b>		<b>DOOR HANDING</b>			
BACKSET		L.H.		INSIDE R.H.	
TOP OF DOOR VERTICAL $\phi$		INSIDE		OUTSIDE	
$\phi$ OF BEVEL		L.H.R.B.		OUTSIDE R.H.R.B	
<b>SARGENT ASSA ABLOY</b>		Sargent Manufacturing Company 100 Sargent Drive New Haven, CT 06511			
DOOR MANUFACTURERS TEMPLATE: IN SERIES TRIM WOOD DOOR 7900, 8200, R8200 MORTISE LOCK		RELEASE DATE: NOV 2020		TEMPLATE NO. 4713_3	