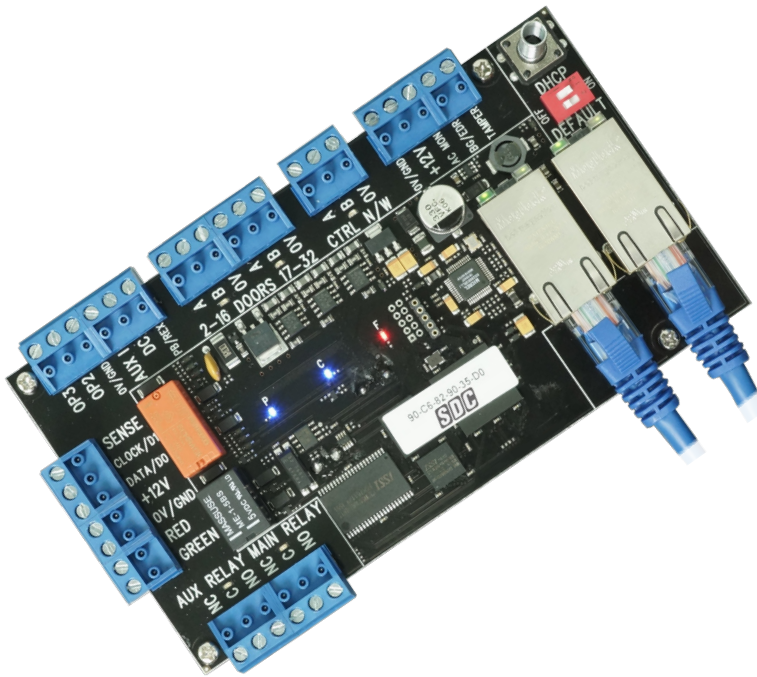


# IP Pro™

## IP-BASED ACCESS CONTROL



Bring safe, secure, easy to implement door access control to the Network's edge without the headaches of costlier, more complicated enterprise solutions. No proprietary software to install and maintain. Program a single or multi-door access control system in minutes - not hours.

### HOW YOUR CUSTOMER BENEFITS:

- Expandable Single Door IP Controller
- Connect & Power with Existing Ethernet Network Infrastructure
- Secure, Built-In Browser Based Software
- Program an Access Control System in Minutes - Not Hours
- Manage From Any PC Via Web Browser
- Proximity, Smart Card & Weigand Readers
- Reduce Cabling & Labor Cost When Compared to Traditional Panel Based Access Control
- Combine with SDC's PoE Access Control & Electrified Locking Hardware for virtually any application

### WHAT YOU NEED TO KNOW:

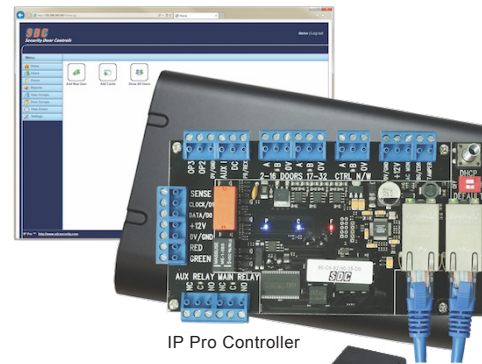
SDC IP Pro™ IP-based Single Door Access Controllers are now available with two Ethernet Ports for interfacing with an additional IP devices like cameras, additional door controllers, etc. They allow expansion from one Standalone door up to a 100-door "Grid." The additional Ethernet port allows IT departments to save a port when connecting an extra door at the server. Installers can eliminate a long cable run when connecting an additional IP device.

Every IP Pro™ Controller comes with secure, built-in software to manage up to 32 doors from any standard web browser to allow for real-time monitoring, user management and audit trail up to 5,000 events. Or, download our FREE PLUS PC-Client software to control up to 100 doors from a single PC. IP Pro™ PLUS is a role-based access control software suite with different interface modules. SDC IP Pro™ Injectors and Splitters are also available to help create a complete solution.

# IP Pro™

## IP-based Access Control

The IP Pro is a single door IP controller with expandibility, supporting up to 15,000 users. Designed for ease of use, the IP Pro embedded software allows for real-time monitoring and user management via a web browser.



IP Pro Controller



IP Pro Splitter



IP Pro Injector

### FEATURES

- Controls one door directly, with unlimited expansion capabilities
- TCP/IP communications (100/10Mbps)
- DHCP or Static IP addresses
- Password protected built-in web server (No separate software to install)
- Live transaction monitoring
- Entry & exit reader capability
- Compatible with industry standard Wiegand output readers
- Reader short circuit protection
- 15,000 users (up to 2 credentials per user)
- Batch card enrollment
- 250 User groups/Time Zones/Door Groups
- Holiday support
- Scheduled Events
- Temporary Users
- Audit Trail – Up to 5,000 events may be exported as a .csv file
- Status LED's – Power, Communications, & Fault on-board diagnostic indicators
- Anti-tailgating
- Anti-passback (global or localized)
- Supported browsers: Microsoft Internet Explorer 8 & 9, Firefox 8.0, Google Chrome
- Multiple credential modes: Card only, PIN only, Pin or Card, Pin & Card
- Door Status Monitoring Input
- Request-to-Exit (REX) Input
- Programmable Auxiliary Input
- Lock Relay Output
- Auxiliary Relay Output
- (2) Programmable Solid-state Outputs
- Tamper Input
- Database backup support

### MODELS

- |                  |                                                                                                          |                |                                                                                                              |
|------------------|----------------------------------------------------------------------------------------------------------|----------------|--------------------------------------------------------------------------------------------------------------|
| <b>IPDCE</b>     | IP Pro Controller board plus enclosure                                                                   | <b>IPS-12</b>  | IP Pro Splitter 12VDC PoE+                                                                                   |
| <b>IPDSE</b>     | IP Pro Door Station Expansion board plus enclosure                                                       | <b>IPRW</b>    | IP Pro Wiegand Reader - PROX, HID compatible (125 kHz)                                                       |
| <b>IPPRO-SKE</b> | IP Pro Starter Kit, including Controller board, Splitter & Injector components plus Controller enclosure | <b>IPRW300</b> | IP Pro Wiegand Reader, Mullion Mount, includes black & white snap-on cover - PROX, HID compatible            |
| <b>IPI-30</b>    | IP Pro Injector 30W PoE+                                                                                 | <b>IPRW500</b> | IP Pro Wiegand Reader, U.S. Single Gang Mount, includes black and white snap-on cover - PROX, HID compatible |

### SPECIFICATIONS

#### IP Pro Controller

Voltage	12 VDC Input
Current Consumption (max)	250mA
Operating Temperature	14°F – 122°F (Indoor use only)
Dimensions	5.375" x 3.5" x 0.875" board only 9.25" x 6.5" x 2.1875" w/ ABS plastic enclosure
Weight	1lb
Relay Output Type	Form C (SPDT) x 2
Relay Contact Rating	Main (Lock) – 5A @ 30VDC Auxiliary – 1A @30VDC
Connections	Digital Inputs: 4 dry contact inputs Ethernet: RJ45 RS-485 Terminal Bus Reader Power – 12VDC Reader Data – Wiegand (26bit to 37bit) Reader LED Control – Red & Green Two Solid State outputs (100mA max)

#### IP Pro Splitter

Input voltage	44 - 57 VDC
Input power	30W max
Output power	24W max
Output Current	2A @ 12V

#### IP Pro Injector

PoE Output Pin Assignment and Polarity	4/5 (+), 7/8 (-)
Output Power Voltage	55Vdc
User Port Power	30Watts (Guaranteed)

