

# 1546, 1547, 1548, 1549 SERIES SURFACE OVERHEAD HOLDERS & STOPS INSTALLATION INSTRUCTIONS

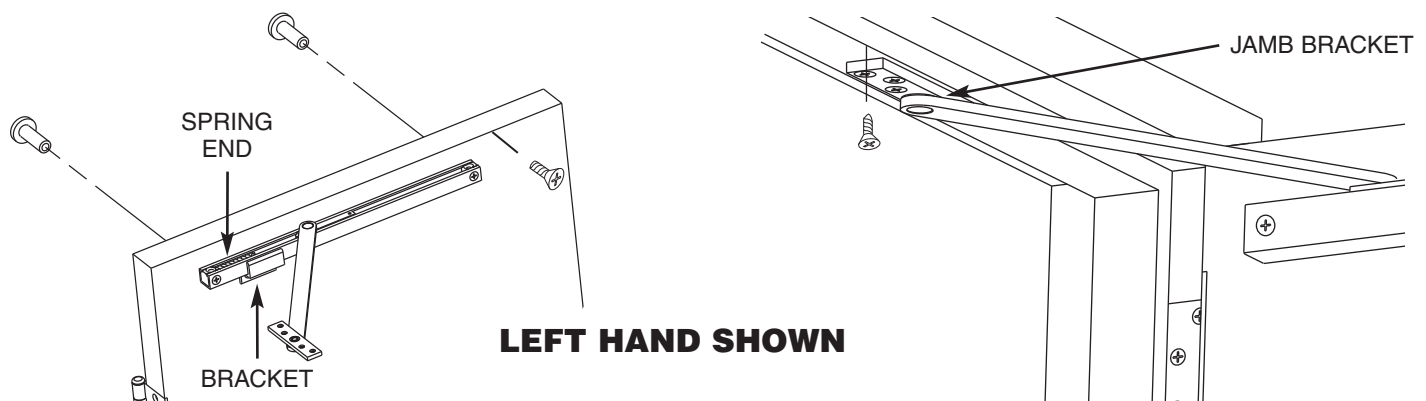
**SARGENT®**  
**ASSA ABLOY**

NON-HANDED. LEFT HAND SHOWN, RIGHT HAND OPPOSITE.

FOR INSTALLATION ASSISTANCE, CONTACT SARGENT AT 800-727-5477 or [www.sargentlock.com](http://www.sargentlock.com)

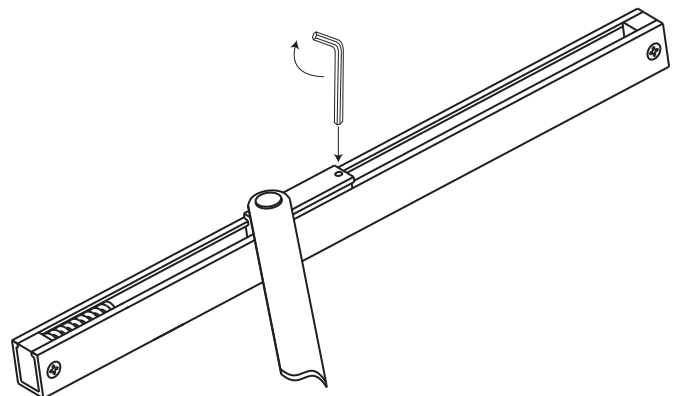
- 1**
- Use the attached template that corresponds with the type of hinge being used
  - **Drill door for channel and drill and tap** metal frame for **#12-24** machine screws to attach jamb bracket

- 2**
- **Secure channel to door** (spring end towards hinge) with machine screws and mortise nuts provided
  - **For models 1547, 1548 and 1549** only, install bracket on channel as shown
  - Secure jamb bracket to frame with fasteners provided



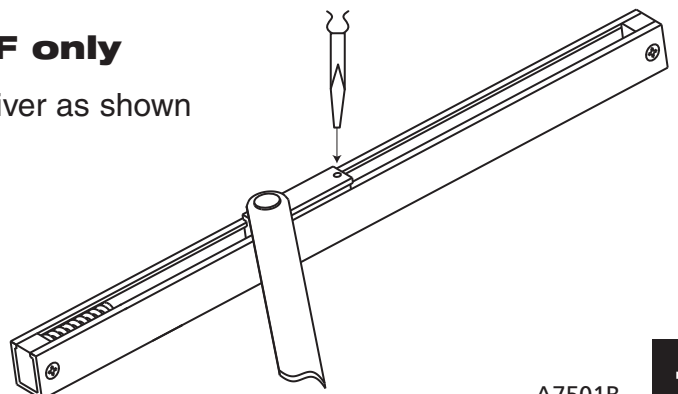
- 3**
- ### Holding tension adjustment on hold open models only (1546H, 1547H, 1548H and 1549H)

- To increase tension insert a 9/32" allen wrench and turn clockwise as required



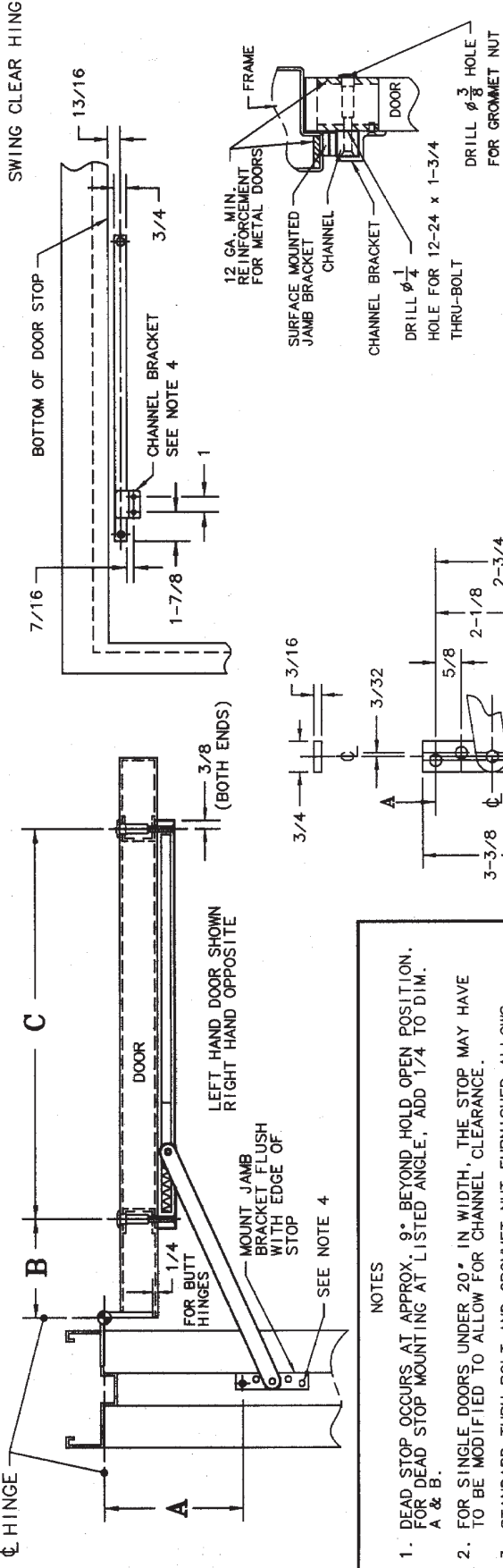
- 4**
- ### Friction adjustment on models 1546F, 1547F, 1548F and 1549F only

- To increase friction, insert flat bladed screw driver as shown and turn clockwise for desired friction



MODEL NO.	ACTUAL DOOR WIDTH	DEGREE OF OPENING AT HOLD OPEN OR STOP (SEE NOTE 1 FOR DEAD STOP)												1540 MOUNTING GROUP 2		
		85°		90°		95°		100°		105°		110°		HINGE TYPE	BUTT WIDTH OR OFFSET	DOOR THICKNESS
		A	B	A	B	A	B	A	B	A	B	C				
1546	18 1/2 -25 (SEE NOTE 5)	4	3 3/8	3 3/4	3	3 1/2	3 3/4	3 1/4	2 1/2	3 1/4	1 1/4	2 1/4	1 1/4	4 1/2	3 1/4 - 2 1/4	
1547	25 1/8 -32 1/2	6	6 3/8	5 1/2	6	5 1/4	5 1/8	7 4/8	5 3/8	5 5/8	4 3/8	5	3 3/8	5 5/8	1 3/4 - 2	
1548	32 5/8 -40	8 3/8	9 1/4	8	8 3/4	7 1/2	7 1/8	8	8	6 3/4	6 3/8	7 5/8	7 3/8	1 17/32	5 1/8 - 1 3/4	
1549	40 1/8 -48	10 1/2	14	7 9/8	13 3/8	9 1/4	8 3/4	12 3/8	8 3/4	8 1/4	8	12	8	3 5/8	2	

HINGE      B      C      SWING CLEAR HINGE



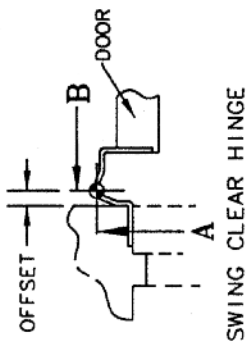
- NOTES
1. DEAD STOP OCCURS AT APPROX. 9° BEYOND HOLD OPEN POSITION. FOR DEAD STOP MOUNTING AT LISTED ANGLE, ADD 1/4 TO DIM. A & B.
  2. FOR SINGLE DOORS UNDER 20" IN WIDTH, THE STOP MAY HAVE TO BE MODIFIED TO ALLOW FOR CHANNEL CLEARANCE.
  3. STANDARD THRU BOLT AND GROMMET NUT FURNISHED ALLOWS CHANNEL TO BE MOUNTED ON DOORS 1-3/8 TO 1-3/4 THICK.
  4. USE #12-24 x 1/2 FLAT HEAD MACHINE SCREWS OR #12 FLAT HEAD WOOD SCREWS. 4 REQUIRED FOR JAMB BRACKET, 2 REQUIRED FOR CHANNEL BRACKET.
  5. 19-1/2 MIN. DOOR WIDTH WITH OFFSET HINGE.
  6. FOR CONTINUOUS HINGES, USE SIMILAR BUTT HINGE VALUES.

**SARGENT**  
**ASSA ABLOY**

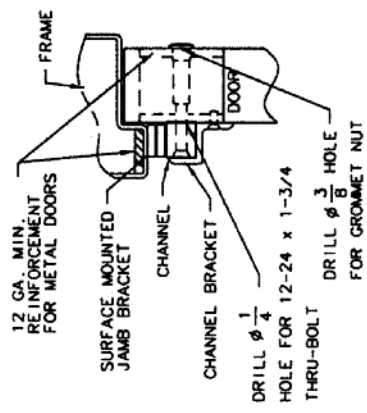
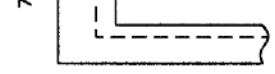
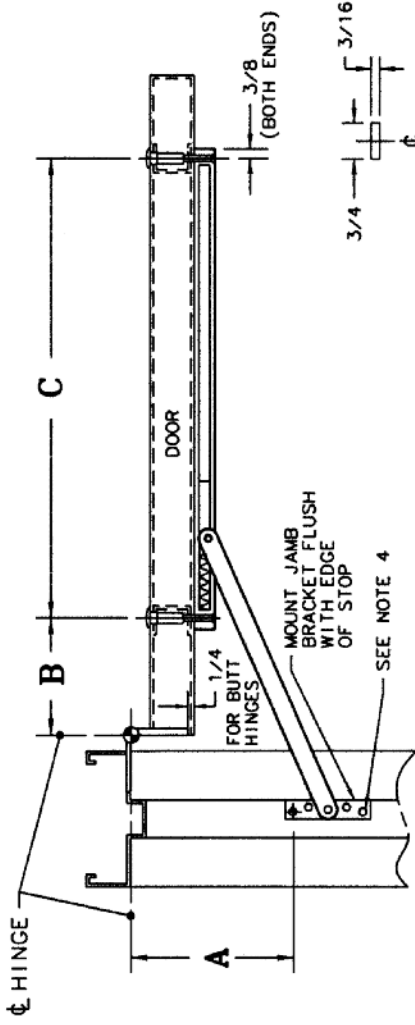
Copyright © SARGENT Manufacturing.  
All rights reserved. Reproduction in whole or in part without the express written permission of SARGENT Manufacturing is prohibited.

ASSA ABLOY, the global leader in door opening solutions

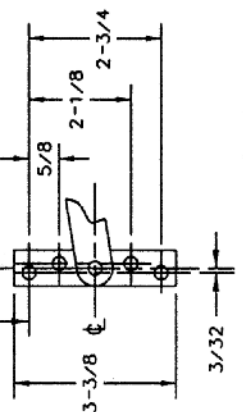
1540 MOUNTING GROUP 3		
HINGE TYPE	BUTT WIDTH OR OFFSET	DOOR THICKNESS
BUTT	4	$\frac{13}{8} - \frac{13}{4}$
SWING CLEAR	$\frac{3}{8}$	$\frac{13}{4}$



MODEL NO.	ACTUAL DOOR WIDTH	DEGREE OF OPENING AT HOLD OPEN (SEE NOTE 1 FOR STOP)													
		85°		90°		95°		100°		105°		110°			
		A	B	A	B	A	B	A	B	A	B	A	B		
1546	$18\frac{1}{2} - 25$	$4\frac{3}{8}$	$3\frac{3}{8}$	4	$3\frac{1}{8}$	$5\frac{5}{8}$	$2\frac{7}{8}$	$3\frac{3}{8}$	$2\frac{5}{8}$	$1\frac{1}{8}$	$3\frac{3}{8}$	3	$2\frac{1}{4}$	$1\frac{1}{4}$	$14\frac{4}{8}$
1547	$25\frac{1}{8} - 32\frac{1}{2}$	6	$6\frac{1}{2}$	$5\frac{5}{8}$	$6\frac{1}{8}$	$5\frac{1}{4}$	$5\frac{3}{4}$	5	$5\frac{3}{8}$	$5\frac{1}{4}$	$4\frac{5}{8}$	$4\frac{3}{8}$	5	$3\frac{3}{8}$	$16\frac{8}{8}$
1548	$32\frac{5}{8} - 40$	$8\frac{5}{8}$	$9\frac{3}{8}$	$8\frac{1}{8}$	$7\frac{7}{8}$	$8\frac{1}{2}$	$8\frac{1}{8}$	7	$8\frac{1}{8}$	$7\frac{1}{2}$	$6\frac{3}{4}$	$6\frac{3}{8}$	$7\frac{1}{2}$	$1\frac{1}{2}$	$19\frac{2}{2}$
1549	$40\frac{1}{8} - 48$	$10\frac{1}{2}$	$14\frac{1}{4}$	$9\frac{5}{8}$	$13\frac{3}{4}$	9	$8\frac{1}{2}$	$8\frac{1}{2}$	$12\frac{3}{4}$	8	$12\frac{1}{4}$	$7\frac{5}{8}$	$11\frac{7}{8}$	$3\frac{3}{4}$	$21\frac{4}{4}$



- NOTES
1. DEAD STOP OCCURS AT APPROX. 9° BEYOND HOLD OPEN POSITION. FOR DEAD STOP MOUNTING AT LISTED ANGLE, ADD 1/4 TO DIM. A & B.
  2. FOR SINGLE DOORS UNDER 20" IN WIDTH, THE STOP MAY HAVE TO BE MODIFIED TO ALLOW FOR CHANNEL CLEARANCE.
  3. STANDARD THRU BOLT AND GROMMET NUT FURNISHED ALLOWS CHANNEL TO BE MOUNTED ON DOORS 1-3/8 TO 1-3/4 THICK.
  4. USE #12-24 x 1/2 FLAT HEAD MACHINE SCREWS OR #12 FLAT HEAD WOOD SCREWS REQUIRED FOR JAMB BRACKET. 2 REQUIRED FOR CHANNEL BRACKET.
  5. 19-1/2 MIN. DOOR WIDTH WITH OFFSET HINGE.
  6. FOR CONTINUOUS HINGES, USE SIMILAR BUTT HINGE VALUES.



JAMB BRACKET DETAIL

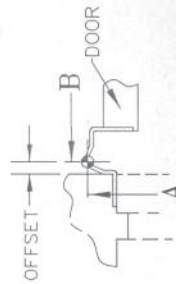
**SARGENT®**  
**ASSA ABLOY**

Copyright © SARGENT Manufacturing.  
All rights reserved. Reproduction in whole or in part without the express written permission of SARGENT Manufacturing is prohibited.

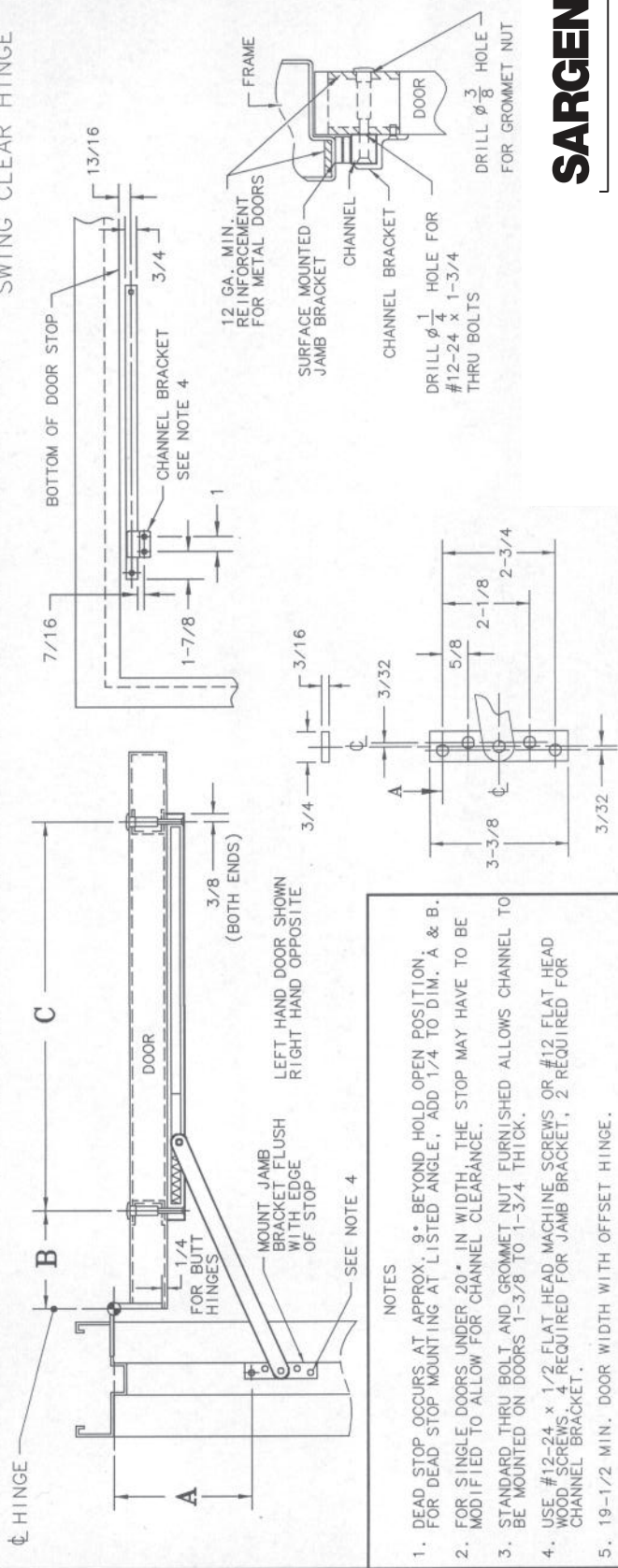
ASSA ABLOY, the global leader in door opening solutions



MODEL NO.	ACTUAL DOOR WIDTH	DEGREE OF OPENING AT HOLD OPEN OR STOP (SEE NOTE 1 FOR DEAD STOP)												1540 MOUNTING GROUP 1		
		85°		90°		95°		100°		105°		110°		HINGE TYPE	BUTT WIDTH OR OFFSET	DOOR THICKNESS
		A	B	A	B	A	B	A	B	A	B	C				
1546	18 1/2 -25 (SEE NOTE 5)	4	3 1/8	3 3/4	2 7/8	3 3/8	2 1/2	1 3/8	2 1/4	1 3/8	2 1/8	1 1/4	2 1/8	BUTT	5	1 3/4 - 2 1/2
1547	25 1/8 -32 1/2	5 7/8	6 1/4	5 1/2	5 3/8	5 1/8	5 1/2	4 3/4	5 1/8	4 1/2	4 7/8	3 5/8	4 5/8	OFFSET PIVOT	3/4	2 - 2 1/4
1548	32 5/8 -40	8 3/8	9 1/4	7 7/8	8 3/8	7 3/8	8 1/4	7	7 7/8	6 5/8	7 1/2	6 3/8	7 1/8	SWING CLEAR	1 5/8	2 1/4
1549	40 1/8 -48	10 3/8	13 3/8	9 3/4	13 3/8	9 1/8	12 1/4	8 5/8	12 1/4	8 1/4	11 3/8	7 7/8	11 1/2		2	2



SWING CLEAR HINGE



- NOTES
1. DEAD STOP OCCURS AT APPROX. 9° BEYOND HOLD OPEN POSITION. FOR DEAD STOP MOUNTING AT LISTED ANGLE, ADD 1/4 TO DIM. A & B.
  2. FOR SINGLE DOORS UNDER 20" IN WIDTH, THE STOP MAY HAVE TO BE MODIFIED TO ALLOW FOR CHANNEL CLEARANCE.
  3. STANDARD THRU BOLT AND GROMMET NUT FURNISHED ALLOWS CHANNEL TO BE MOUNTED ON DOORS 1-3/8 TO 1-3/4 THICK.
  4. USE #12-24 x 1/2 FLAT HEAD MACHINE SCREWS OR #12 FLAT HEAD WOOD SCREWS. 4 REQUIRED FOR JAMB BRACKET, 2 REQUIRED FOR CHANNEL BRACKET.
  5. 19-1/2 MIN. DOOR WIDTH WITH OFFSET HINGE.
  6. FOR CONTINUOUS HINGES, USE SIMILAR BUTT HINGE VALUES.

**SARGENT**

**ASSA ABLOY**

ASSA ABLOY, the global leader in door opening solutions

Copyright © SARGENT Manufacturing. All rights reserved. Reproduction in whole or in part without the express written permission of SARGENT Manufacturing is prohibited.