

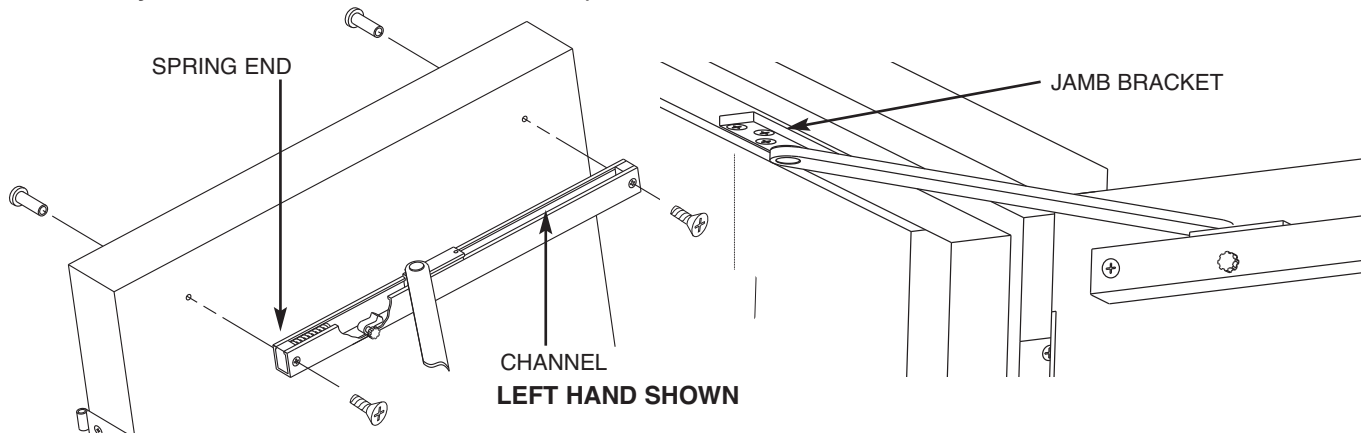
INSTALLATION INSTRUCTIONS FOR SARGENT® SURFACE 597, 598, 599 SERIES OVERHEAD HOLDERS & STOPS

SARGENT®
ASSA ABLOY

NON-HANDED. LEFT HAND SHOWN, RIGHT HAND OPPOSITE.

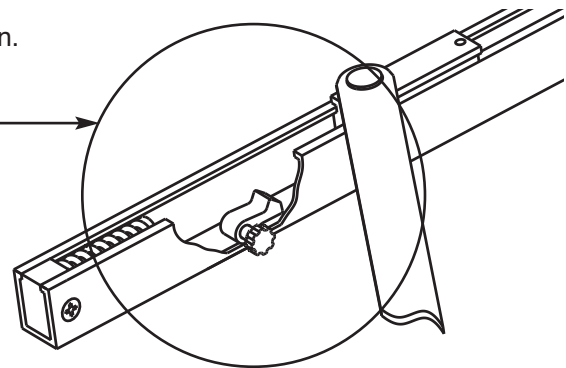
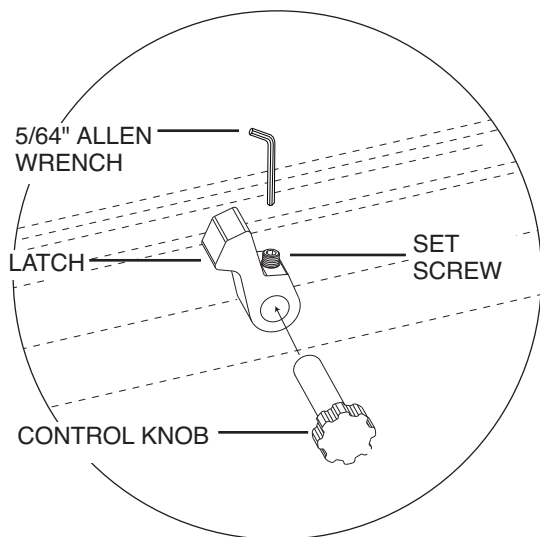
- 1**
- Use the attached template that corresponds with the same type of hinge being used.
 - **Drill door** to attach channel, **drill and tap frame for 1/4-20** machine screws to attach jamb bracket.

- 2**
- **Secure channel** using machine screws and mortise nuts (spring end towards hinge).
 - **Secure jamb** bracket to frame with fasteners provided.



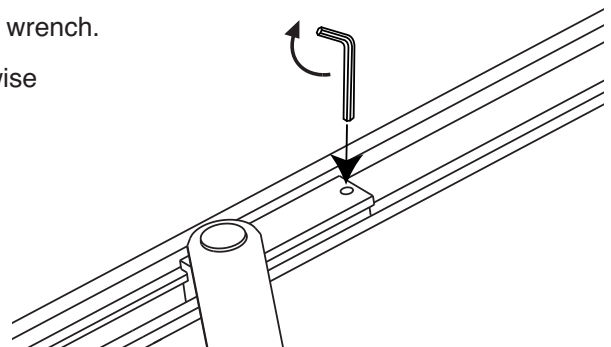
- 3** Install latch and control knob for Hold Open models (597H, 598H, 599H).

- Place latch into channel.
- Insert control knob thru holes in door, channel and into latch.
- Install set screw into latch and secure to control knob.
- Check operation.

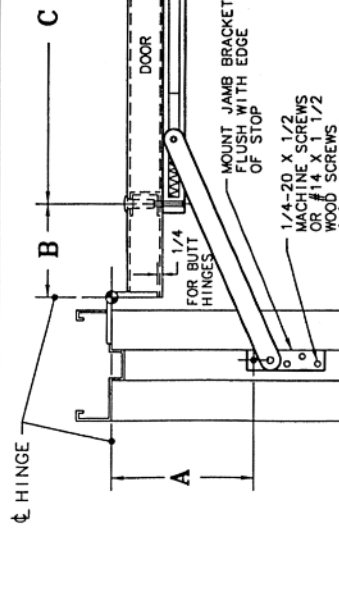
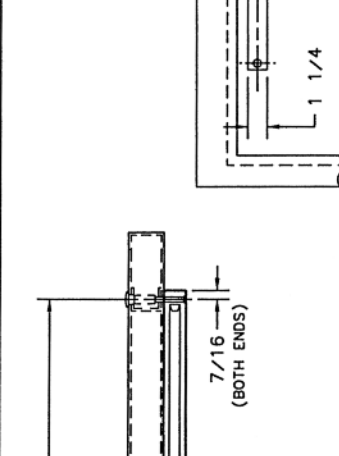
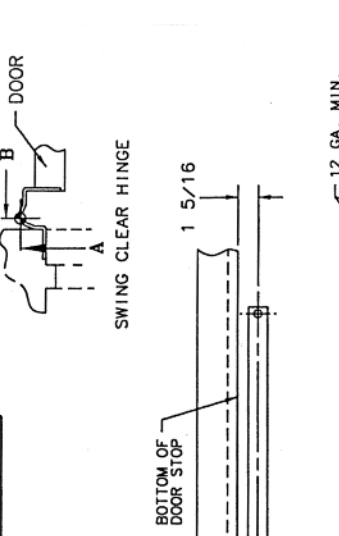


- 4** Holding Tension adjustment is easily made with a 1/8" Allen wrench.

- To increase tension insert wrench as shown and turn clockwise 1/4 turn for desired tension.
- To activate hold open feature rotate control knob with door slightly open.
- Check operation.



MODEL NO.	ACTUAL DOOR WIDTH	DEGREE OF OPENING AT HOLD OPEN (SEE NOTE 2 FOR STOP)												590 MOUNTING GROUP 2		
		85°		90°		95°		100°		105°		110°		HINGE TYPE	BUTT WIDTH OR OFFSET	DOOR THICKNESS
		A	B	A	B	A	B	A	B	A	B	A	B			
597H & 597S	24" - 32 1/2"	7 1/4	5	7	4 5/8	6 5/8	4 3/8	6 1/8	4 1/8	6	3 3/4	5 3/4	3 1/2	17/8	4 1/2	1 3/4 - 2 1/4
598H & 598S	32 5/8" - 39 1/8"	8 3/8	8 7/8	7 3/4	8 3/8	7 3/8	7 3/8	7 1/8	5 5/8	6 1/2	7 3/8	6 1/2	7	19	5/8	1 3/4 - 2
599H & 599S	39 1/4" AND OVER	10 1/4	13 1/8	9 3/8	12 3/8	8 7/8	8 1/2	11 5/8	8 1/4	11 1/8	7 7/8	7 7/8	11	21	1 17/32	1 3/4



- NOTES
1. DIMENSIONS ARE GIVEN FOR THE HOLD OPEN POSITION. DEAD STOP OCCURS 5°-9° AFTER HOLD OPEN.
 2. FOR DEAD STOP TEMPLATING, ADD 1/2" TO DIM. "A" AND 3/8" TO DIM. "B".
 3. "A" & "B" DIMENSIONS ARE GIVEN FROM ϕ OF HINGE.
 4. LEFT HAND SHOWN, RIGHT HAND OPPOSITE.
 5. THRU BOLTS AND GROMMET NUTS PROVIDED ALLOWS CHANNEL TO BE MOUNTED ON 1 3/4" - 2" DOORS.
 6. FOR DOORS UNDER 25" WIDE, THE STOP MAY HAVE TO BE MODIFIED TO ALLOW FOR CHANNEL CLEARANCE.
 7. FOR CONTINUOUS HINGES USE SIMILAR BUTT HINGE VALUES.

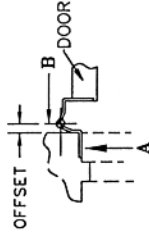
SARGENT Manufacturing Company 100 Sargent Drive, New Haven, CT 06511	
DATA SHEET: 597-599 SERIES DOOR HOLDERS AND STOPS - MOUNTING GROUP 2 -	EFFECTIVE DATE APRIL 02 TEMPLATE NO. A7480 B

SARGENT®

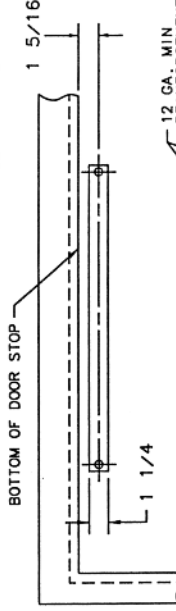
ASSA ABLOY

590 MOUNTING GROUP 1			
HINGE TYPE	BUTT WIDTH OR OFFSET	DOOR THICKNESS	
BUTT HINGE	5	$1\frac{3}{4} - 2\frac{1}{2}$	
OFFSET PIVOT	$\frac{3}{4}$	$2 - 2\frac{1}{4}$	
	$\frac{5}{8}$	$2\frac{1}{4}$	
SWING CLEAR HINGE	$1\frac{1}{2} - \frac{5}{8}$	2	

MODEL NO.	ACTUAL DOOR WIDTH	DEGREE OF OPENING AT HOLD OPEN (SEE NOTE 2 FOR STOP)														
		85°		90°		95°		100°		105°		110°				
		A	B	A	B	A	B	A	B	A	B	A	B			
597H & 597S	$24 - 32\frac{1}{2}$	$7\frac{1}{8}$	$4\frac{5}{8}$	$6\frac{5}{8}$	$4\frac{3}{4}$	$3\frac{3}{8}$	$4\frac{3}{4}$	$1\frac{1}{4}$	6	$5\frac{7}{8}$	$3\frac{5}{8}$	$5\frac{5}{8}$	$3\frac{3}{8}$	$7\frac{7}{8}$	$17\frac{7}{8}$	C
598H & 598S	$32\frac{5}{8} - 39\frac{1}{8}$	$8\frac{1}{4}$	$7\frac{3}{4}$	$7\frac{3}{4}$	$8\frac{3}{8}$	7	8	$6\frac{7}{8}$	$7\frac{1}{2}$	$6\frac{7}{8}$	$7\frac{1}{8}$	$6\frac{1}{4}$	$6\frac{7}{8}$	7	19	
599H & 599S	$39\frac{1}{4}$ AND OVER	$10\frac{1}{8}$	$13\frac{1}{4}$	$9\frac{1}{4}$	$12\frac{5}{8}$	9	12	$8\frac{1}{2}$	$11\frac{1}{2}$	8	$11\frac{1}{8}$	$7\frac{5}{8}$	$10\frac{3}{4}$	21		



SWING CLEAR HINGE

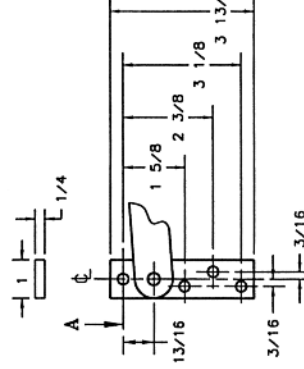


12 GA. MIN REINFORCEMENT FOR METAL DOORS

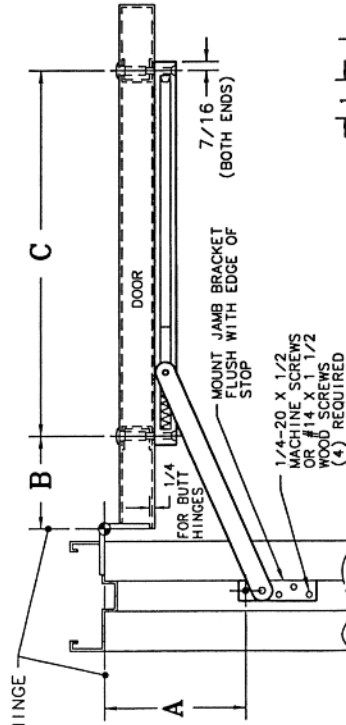


SURFACE MOUNTED JAMB BRACKET CHANNEL

DRILL ϕ 5/16 HOLE FOR 5/16-18 x 2 THRU-BOLT



JAMB BRACKET DETAIL



NOTES

1. DIMENSIONS ARE GIVEN FOR THE HOLD OPEN POSITION. DEAD STOP OCCURS 5°-9° AFTER HOLD OPEN.
2. FOR DEAD STOP TEMPLATING, ADD 1/2 TO DIM. *A* AND 3/8 TO DIM. *B*.
3. *A* & *B* DIMENSIONS ARE GIVEN FROM ϕ OF HINGE.
4. LEFT HAND SHOWN, RIGHT HAND OPPOSITE.
5. THRU BOLTS AND GROMMET NUTS PROVIDED ALLOWS CHANNEL TO BE MOUNTED ON 1 3/4 - 2 DOORS.
6. FOR DOORS UNDER 25" WIDE, THE STOP MAY HAVE TO BE MODIFIED TO ALLOW FOR CHANNEL CLEARANCE.
7. FOR CONTINUOUS HINGES USE SIMILAR BUTT HINGE VALUES.

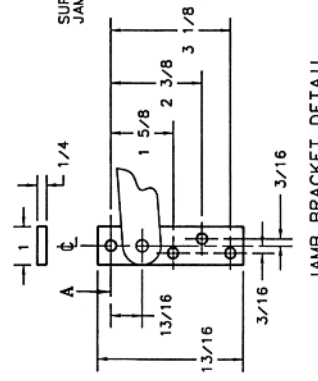
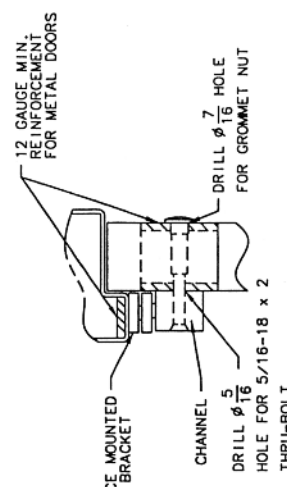
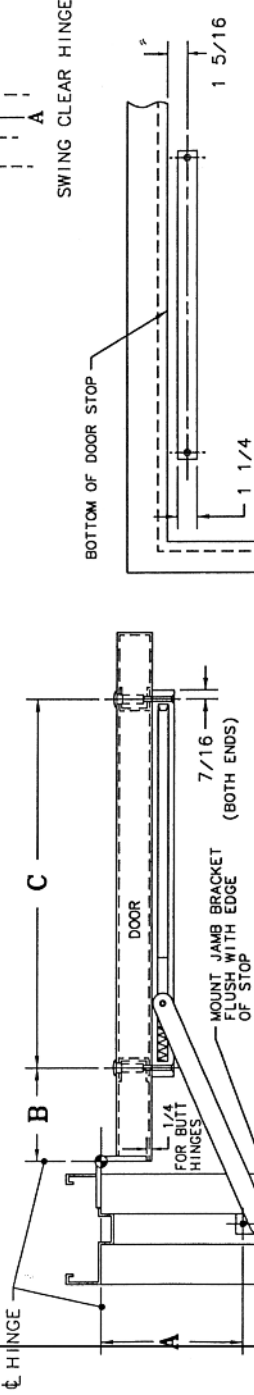
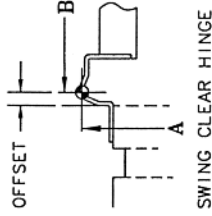
SARGENT® Manufacturing Company 100 Sargent Drive New Haven, CT 06511	
DATA SHEET : 597-599 SERIES DOOR HOLDERS AND STOPS - MOUNTING GROUP 1 -	EFFECTIVE DATE : APRIL 02 TEMPLATE NO. : A7479 B

Copyright © 2008, Sargent Manufacturing Company, an ASSA ABLOY Group company. All rights reserved. Reproduction in whole or in part without the express written permission of Sargent Manufacturing Company is prohibited. A7499A

ASSA ABLOY, the global leader
in door opening solutions

MODEL NO.	ACTUAL DOOR WIDTH	DEGREE OF OPENING AT HOLD OPEN (SEE NOTE 2 FOR STOP)															
		85°		90°		95°		100°		105°		110°					
		A	B	A	B	A	B	A	B	A	B	A	B				
597H & 597S	24 -32 1/2	3 7/8	5	1 7/8	3 4/4	5 8/8	1 1/2	6 8/8	1 1/2	6 8/8	1 1/2	6 8/8	7 5/8	3 5/8	5 8/8	7 5/8	19
598H & 598S	32 5/8 -39 8/8	5 8/8	8 7/8	3 7/4	5 8/8	7 1/4	1 1/2	8 4/4	1 1/2	8 4/4	1 1/2	8 4/4	11 1/8	7 1/8	6 7/8	7 1/2	21
599H & 599S	39 1/4 AND OVER	10 8/8	13 1/8	1 9/4	12 7/8	8 1/4	1 1/2	12 1/2	1 1/2	12 1/2	1 1/2	12 1/2	11 3/8	7 1/8	6 7/8	7 1/2	21

590 MOUNTING GROUP 3			
HINGE TYPE	BUTT WIDTH OR OFFSET	DOOR THICKNESS	
BUTT HINGE	4	1 3/8 - 1 1/2	
SWING CLEAR HINGE	3 3/8	1 3/4	



- NOTES
1. DIMENSIONS ARE GIVEN FOR THE HOLD OPEN POSITION. DEAD STOP OCCURS 5°-9° AFTER HOLD OPEN.
 2. FOR DEAD STOP TEMPLATING, ADD 1/2 TO DIM. "A"
 3. "A" & "B" DIMENSIONS ARE GIVEN FROM ϕ OF HINGE.
 4. LEFT HAND SHOWN, RIGHT HAND OPPOSITE.
 5. THRU BOLTS AND GROMMET NUTS PROVIDED ALLOWS CHANNEL TO BE MOUNTED ON 1 3/4 - 2 DOORS.
 6. FOR DOORS UNDER 25" WIDE, THE STOP MAY HAVE TO BE MODIFIED TO ALLOW FOR CHANNEL CLEARANCE.
 7. FOR CONTINUOUS HINGES USE SIMILAR BUTT HINGE VALUES.

SARGENT Manufacturing Company	
100 Sargent Drive, New Haven, CT 06511	EFFECTIVE DATE
	APRIL 02
	TEMPLATE NO.
	A74R1 R
DATA SHEET:	
597-599 SERIES DOOR	
HOLDERS AND STOPS	
- MOUNTING GROUP 3 -	

Copyright © 2008, Sargent Manufacturing Company, an ASSA ABLOY Group company. All rights reserved. Reproduction in whole or in part without the express written permission of Sargent Manufacturing Company is prohibited.

A7499A