

# INSTALLATION INSTRUCTIONS FOR SECURITY SIDELITE LATCH

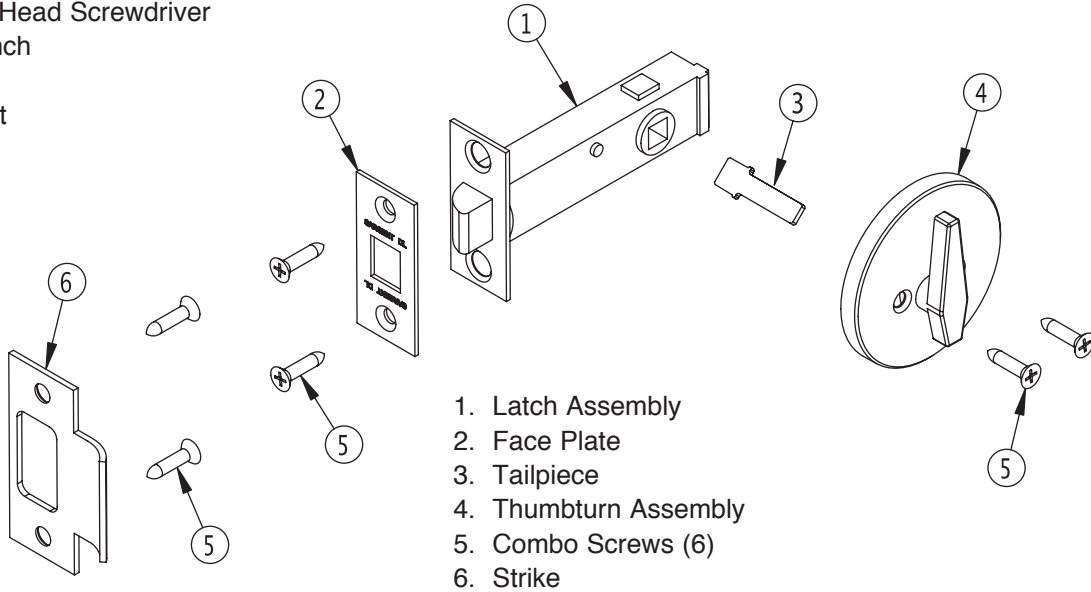
# SARGENT®

# ASSA ABLOY

FOR ASSISTANCE, CONTACT SARGENT AT 800-727-5477 or [www.sargentlock.com](http://www.sargentlock.com)

## Tools

- #2 Phillips Head Screwdriver
- Center Punch
- 1" Bore
- 1/2" Drill Bit

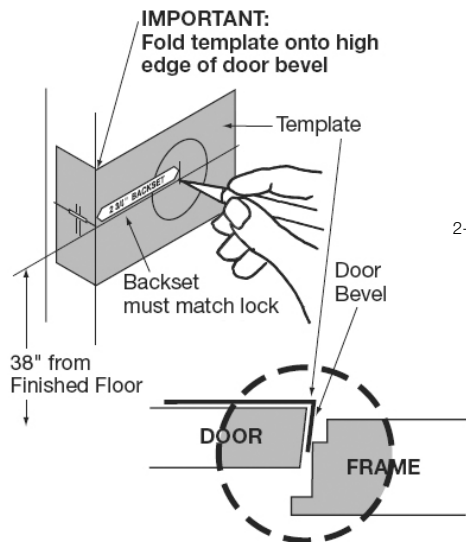


1. Latch Assembly
2. Face Plate
3. Tailpiece
4. Thumbturn Assembly
5. Combo Screws (6)
6. Strike

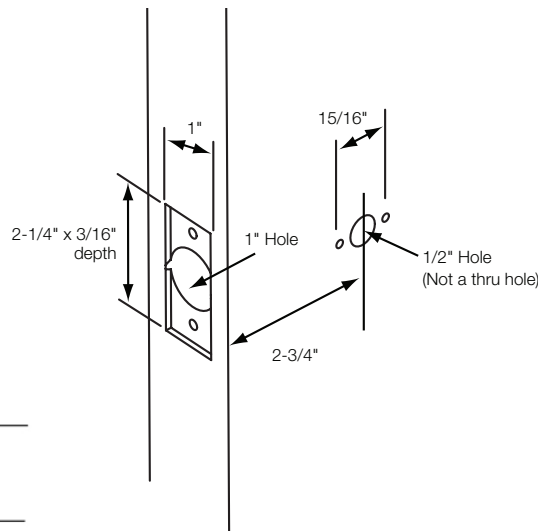
## Door Preparation

Hollow Metal Doors should be properly reinforced for lock support. If support is not provided, contact door manufacturer.  
 For all metal door preparations, use Template No. 4623  
 For all wood door preparations, use Template at bottom of page 2

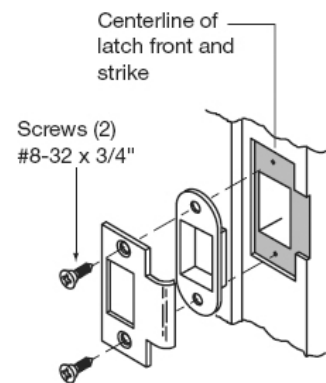
### • Mark and Drill Holes



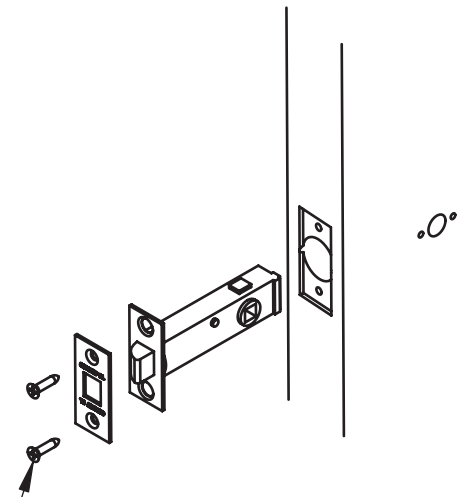
### • Final Door Prep



### • Frame Prep for Strike



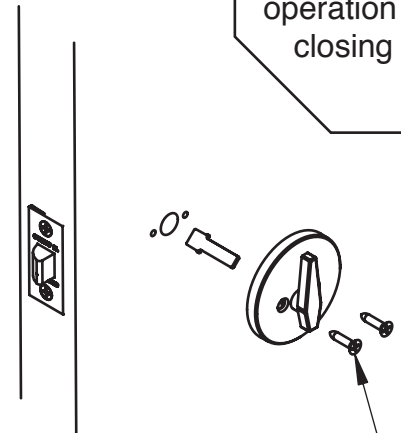
# 1 Latch Installation



Install loosely. Tighten after step #2 with Combo Screws (2)

# 2 Thumbturn Installation

**IMPORTANT**  
Test for proper operation before closing door

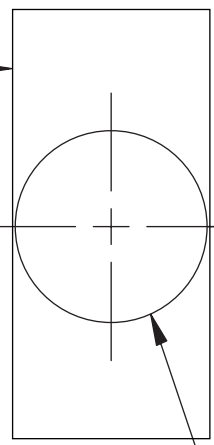


Combo Screws (2)

CUT ALONG THIS LINE

FOLD HERE AND PLACE TEMPLATE ON HIGH EDGE OF DOOR BEVEL

1" x 2 1/4" x 3/16" deep



2-3/4" BACKSET

15/16"

Ø1/2" DRILL TO Ø1" LATCH HOLE (DO NOT DRILL THRU DOOR)

2X CENTER PUNCH THIS LOCATION FOR COMBO SCREWS

Ø1" DRILL X 3-3/4" DEEP AT CENTER MARK OF 1-3/4" DOOR THICKNESS

**SARGENT**  
**ASSA ABLOY**

ASSA ABLOY, the global leader in door opening solutions