

# Instructions for Installing SARGENT 700, 700-4, 700-6, and 700-8 Lever Handle Control

## ATTENTION:

To prepare door, use instruction sheets and templates packed with exit device and outside trim.

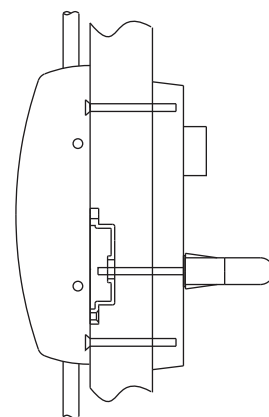
For installation assistance, contact SARGENT at 800-727-5477.

# SARGENT®

# ASSA ABLOY

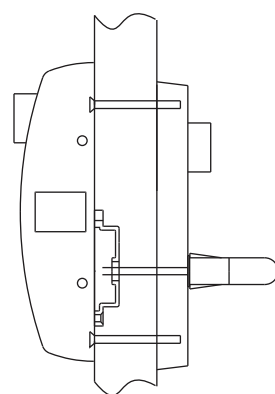
700 SERIES CONTROL USED WITH  
8700 AND 9700 SURFACE MOUNTED  
VERTICAL ROD EXIT DEVICES

8700  
RHRB SHOWN



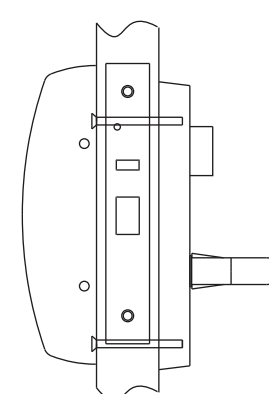
700 SERIES CONTROL USED WITH  
8816 AND 9800 RIM EXIT DEVICES

8816  
RHRB SHOWN



700 SERIES CONTROL USED WITH  
8900 AND 9900 MORTISE LOCK  
EXIT DEVICES

8900  
RHRB SHOWN



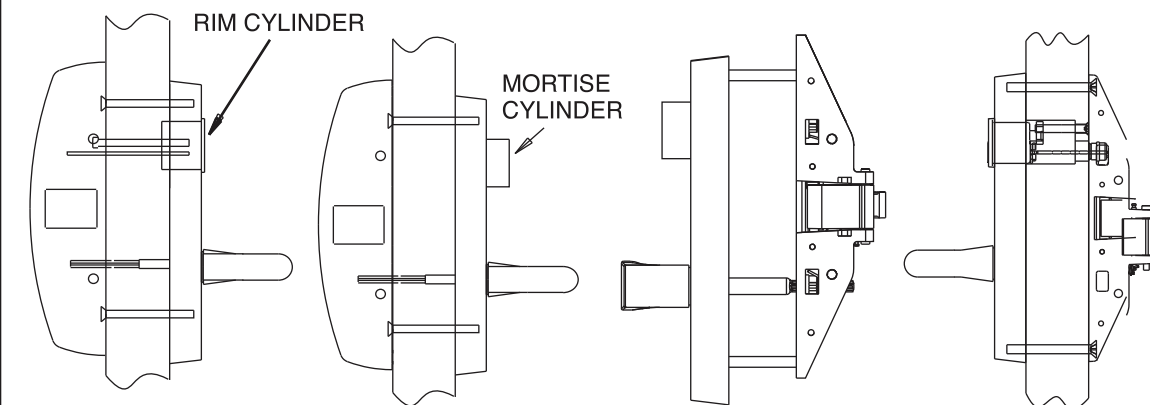
700 8 SERIES CONTROL USED WITH 8500,  
8800, 12-8800, 8888, 12-8888, HC8800 AND 12-HC8800  
RIM TYPE EXIT DEVICES

8800 x 775  
RHRB SHOWN

8800 x 713  
RHRB SHOWN

8500 x 713, 715  
LHRB SHOWN

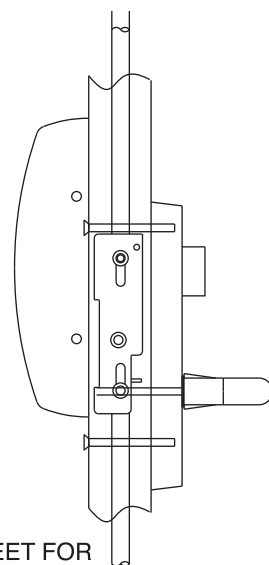
8500 x 704  
LHRB SHOWN



**IMPORTANT:**  
SEE INSTRUCTION SHEET A6770 FOR  
(12-)8888, AND (12-)HC8800 EXIT DEVICE MOUNTING,  
OR A6699 FOR 8500 EXIT DEVICE MOUNTING.

700-4 SERIES CONTROL USED WITH  
8400, 12-MD8400, MD8600, 12-MD8600, WD8600  
AND 12-WD8600 CONCEALED VERTICAL ROD EXIT DEVICES

RHRB SHOWN

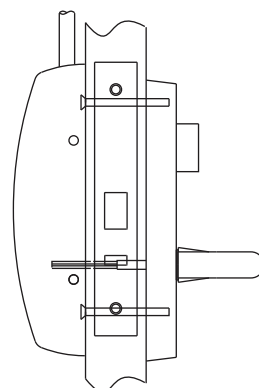


US PATENT No. 4145900

**IMPORTANT:**  
SEE PROPER INSTRUCTION SHEET FOR  
EXIT DEVICE MOUNTING:  
A6697 - FOR 8400 EXIT DEVICE;  
A7012 - FOR 12-MD8400 EXIT DEVICE;  
A7002 - FOR MD8600 AND 12-MD8600  
A3937 - FOR WD8600 AND 12-WD8600  
EXIT DEVICES.

700-8 SERIES CONTROL USED WITH  
PR8700, PP8700, SP8700 AND NB8700  
CENTER AND TOP LATCH SURFACE  
VERTICAL ROD EXIT DEVICES

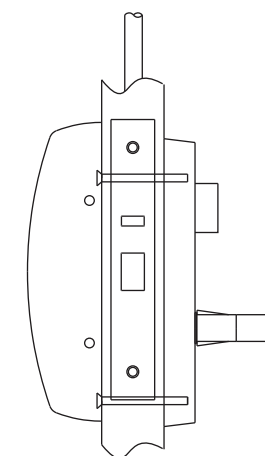
PP8700  
RHRB SHOWN



**IMPORTANT:**  
SEE INSTRUCTION SHEET A7212 FOR  
SP8700, 12-SP8700, PP8700,  
12-PP8700, PR8700 AND 12-PR8700  
EXIT DEVICE MOUNTING.  
SEE INSTRUCTION SHEET A7617  
FOR NB8700 EXIT DEVICE MOUNTING.

700-6 SERIES CONTROL USED WITH  
PR8600, PP8600 AND SP8600  
CENTER AND TOP LATCH CONCEALED  
VERTICAL ROD EXIT DEVICES

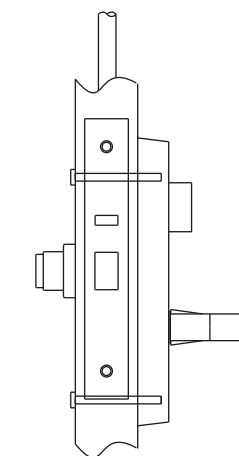
PP8600  
RHRB SHOWN



**IMPORTANT:**  
SEE INSTRUCTION SHEET A7330 FOR  
SP8600, 12-SP8600, PP8600,  
12-PP8600, PR8600 AND 12-PR8600  
EXIT DEVICE MOUNTING.

700-6 SERIES CONTROL USED WITH  
LR8600, LP8600 AND LS8600  
PROFILE SERIES EXIT DEVICES

LP8600  
RHRB SHOWN



**IMPORTANT:**  
SEE INSTRUCTION SHEET A7393 FOR  
LP8600, 12-LP8600, LS8600,  
12-LS8600, LR8600 AND 12-LR8600  
EXIT DEVICE MOUNTING.

11/20/17

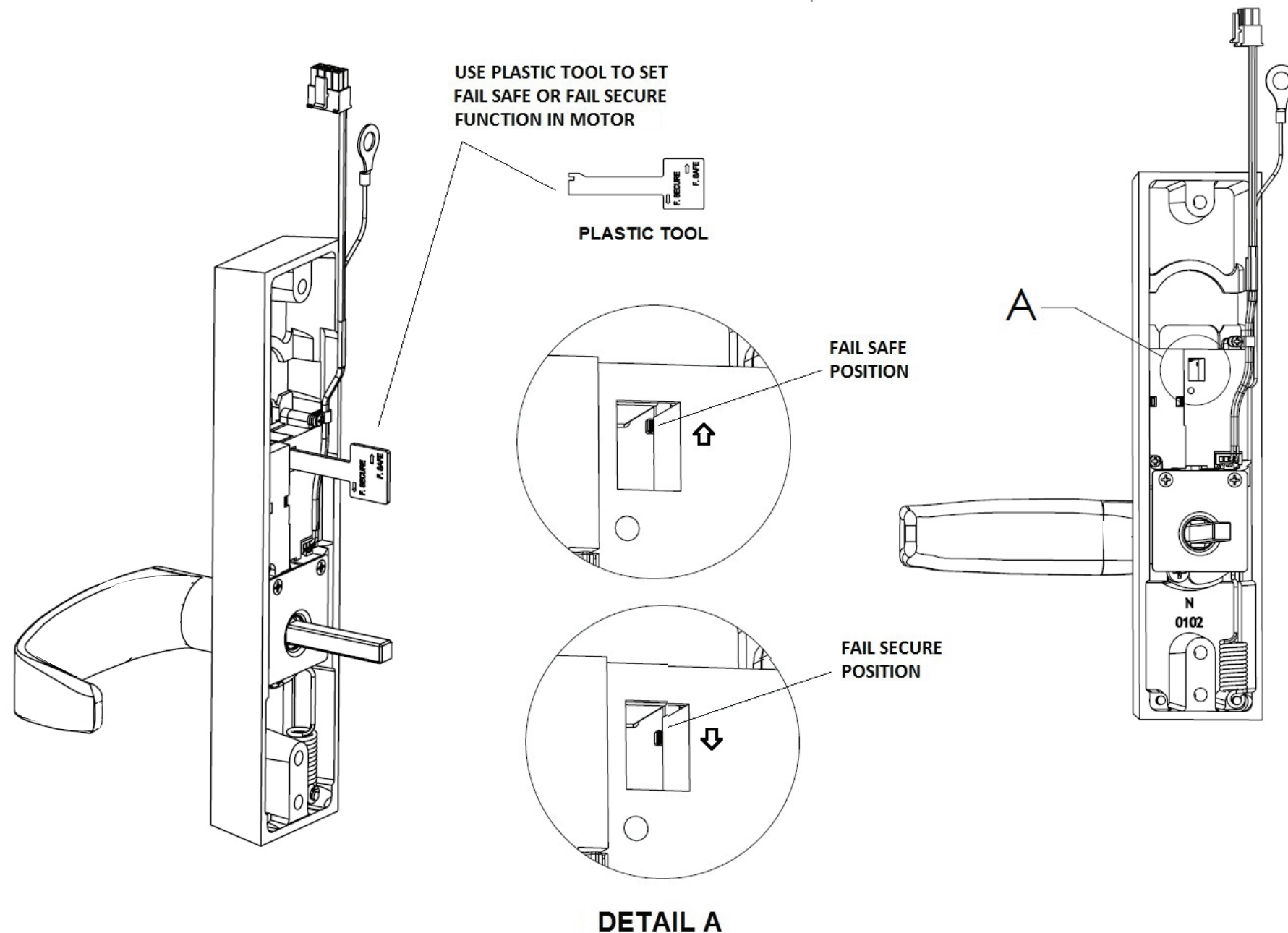


# Instructions for Installing SARGENT 700, 700-4, 700-6, and 700-8 Lever Handle Control

**SARGENT**  
**ASSA ABLOY**

## METHOD FOR SETTING FAIL SAFE / FAIL SECURE FUNCTION ONLY 73,74,75, AND 76 FUNCTIONS

1. INSERT THE PLASTIC TOOL (INCLUDED IN THE BOX) INSIDE THE SWITCH CASE (DETAIL A) ON THE ECOFLEX MOTOR, ALIGN THE TOOL NOTCH WITH THE MOTOR SWITCH.
2. MOVE SWITCH TO THE CORRECT POSITION (SEE GRAPHICS)
3. REMOVE TOOL AND SAVE IT FOR FUTURE USE.



## METHOD FOR INSTALLING THE TRIM WITH GROUND LUG ONLY 73,74,75, AND 76 FUNCTIONS

1. INSERT THRU BOLTS (INCLUDED IN THE BOX) THROUGH THE HOLES IN THE DOOR.
2. ALIGN TRIM TO THE THRU BOLTS.
3. SLIDE GROUND LUG OVER THE UPPER THRU BOLT.
4. SCREW THE THRU BOLTS TO THE TRIM, LEAVING THE GROUND LUG BETWEEN THE DOOR.

