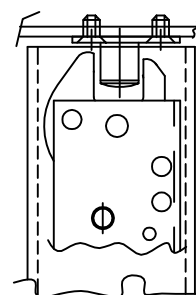


VIEW #11



VIEW #10

CONNECTION OF LINKAGE RODS TO THE DEVICE

- 1) BRING TOP LATCH TO THE CLOSED POSITION.(VIEW #10), BOTTOM LATCH SHOULD BE IN CLOSED POSITION.
- 2) ORIENT THE CRUCIFORM WITH THE "UP" MARK TOWARDS THE TOP ROD ADJUSTER.
- 3) SLIDE THE CRUCIFORM SIDE WAYS AS PER VIEW #12 TOWARDS THE FIXED ROLLERS AT THE SAME TIME CAPTURING BOTH TOP & BTM. ADJUSTER RODS AS IN VIEW #11A
- 4) INSTALL THE BRACKET AND SECURE WITH PROVIDED 10-32x 7/8 FHMS PER VIEW #13

OPERATIONS CHECK:

CRUCIFORM SHOULD SLIDE FREELY UPON DEPRESSION OF PUSH BAR, TOP AND BOTTOM LATCHES SHOULD ACTIVATE TO THE OPEN POSITION.TOP LATCH SHOULD DROP OPEN, BOTTOM LATCH SHOULD FULLY RETRACT.

IF LATCHES FAIL TO OPERATE AS DESCRIBED, GO BACK TO ROD LINKAGE ADJUSTMENTS AND VERIFY LATCH AND ROD ADJUSTER POSITIONS WITH PANIC BAR IN REST POSITION. REVIEW OF RODS AS PER VIEW #11

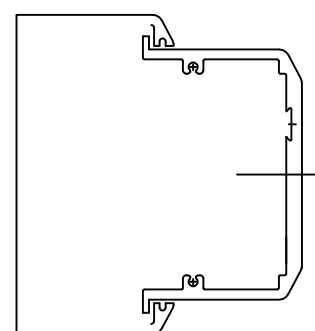
DOGGING INSTRUCTIONS:

TO DOG—INSERT 1/8" HEX. KEY PER VIEWS #14&15 TURN CLOCKWISE UNTIL IT STOPS, FULLY DEPRESS PUSH BAR, WHILE IN THIS POSTION TURN HEX. KEY COUNTERCLOCKWISE UNTIL IT STOPS PULL HEX. KEY OUT. DEVICE SHOULD REMAIN IN THE DOGGED POSITION.

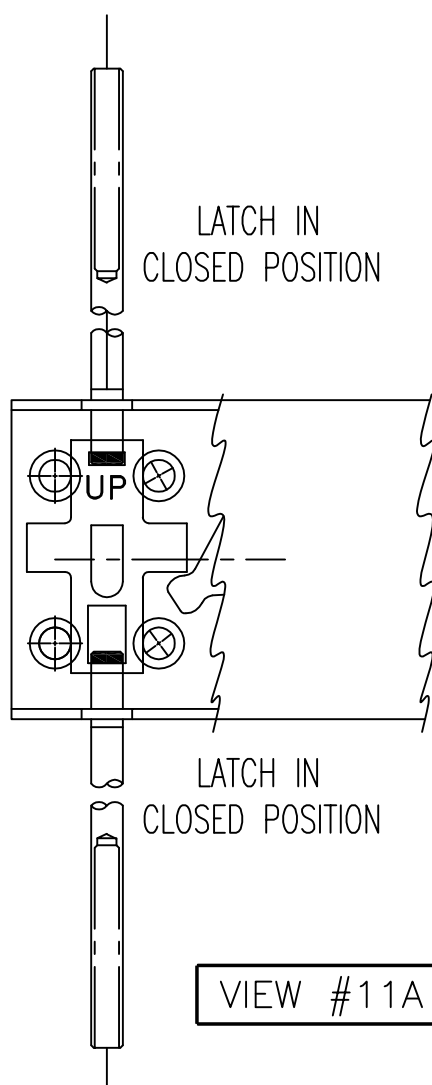
TO UNDOG—INSERT HEX. KEY TURN CLOCKWISE UNTIL IT STOPS PUSH BAR WILL RELEASE.

VIEW #15

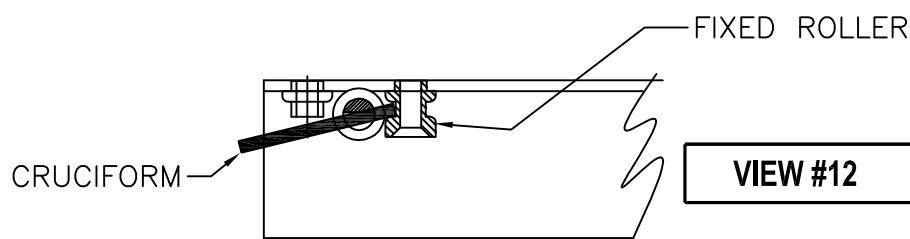
PUSH BAR IN REST POSITION



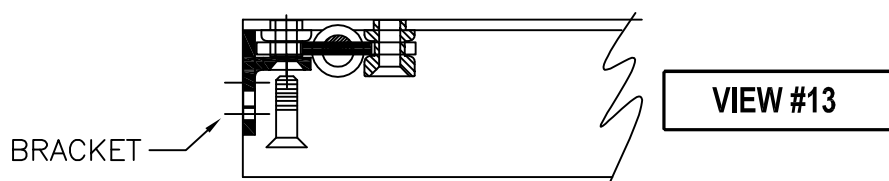
VIEW #15



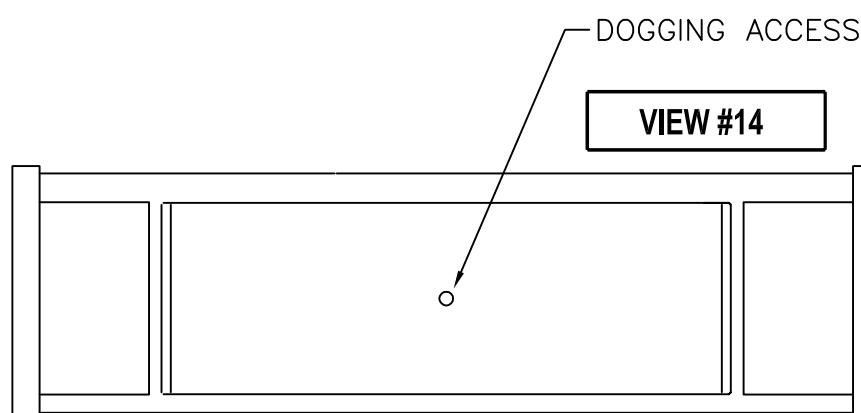
VIEW #11A

NOTE: PUSH BAR MUST BE IN POSITION PER VIEW #15

VIEW #12



VIEW #13



VIEW #14

NOTE: (E)


THIS PRODUCT IS DESIGNED AND MFRG. TO MEET CLASSIFICATION NO. 37601321A, EN1125 STANDARD.

(E) 'THE SAFETY FEATURES OF THIS PRODUCT ARE ESSENTIAL TO IT'S COMPLIANCE WITH EN 1125. NO MODIFICATION OF ANY KIND, OTHER THAN THOSE DESCRIBED IN THESE INSTRUCTIONS, ARE PERMITTED'.

RECOMMENDATIONS FOR MAINTENANCE:

IT IS RECOMMENDED THAT THE FOLLOWING ROUTINE MAINTENANCE CHECKS SHOULD BE TAKEN AT INTERVALS OF NOT MORE THAN ONE MONTH BY THE OCCUPIER OR HIS APPROVED REPRESENTATIVE:

- A) INSPECT AND OPERATE THE PANIC DEVICE TO ENSURE THAT ALL COMPONENTS ARE IN A SATISFACTORY WORKING CONDITION;
- B) ENSURE THAT THE KEEPER(S) IS (ARE) FREE FROM OBSTRUCTION.

E 5.25.05 ADD EN1125 CLASSIFICATION SPEC'S				ECN1841		RM
D 10.21.04 REF PG. 1 OF 3				ECN1815		RM
C 10.21.04 REF PG. 1 OF 3				ECN1815		RM
B 6.28.04 REF. PG. 2 OF 3				ECN1788		RM
DIMENSIONAL TOLERANCES UNLESS OTHERWISE SPECIFIED		APPROVALS		DATE		 jackson CORPORATION® 3447 UNION PACIFIC AVE. LOS ANGELES, CALIF. 90023
DECIMAL DIMENSIONS .XX ± .010		APPROVED				
DECIMAL DIMENSIONS .XXX ± .005		CHECKED				
ANGULAR ± ° FRACTIONAL ± 1/64		DRAWN		R.M. 08.02.02		
MATERIAL		SCALE		FULL		
FINISH SEE NOTES		CRUCIFORM/LINKAGE RODS				SHEET 3 OF 3 SHEETS
HEAT TREAT		INSTALLMENT 1275 S.V.R.				DWG. NO. 10-1082-3
						REV. E

jackson
CORPORATION®
3447 UNION PACIFIC AVE.
LOS ANGELES, CALIF. 90023