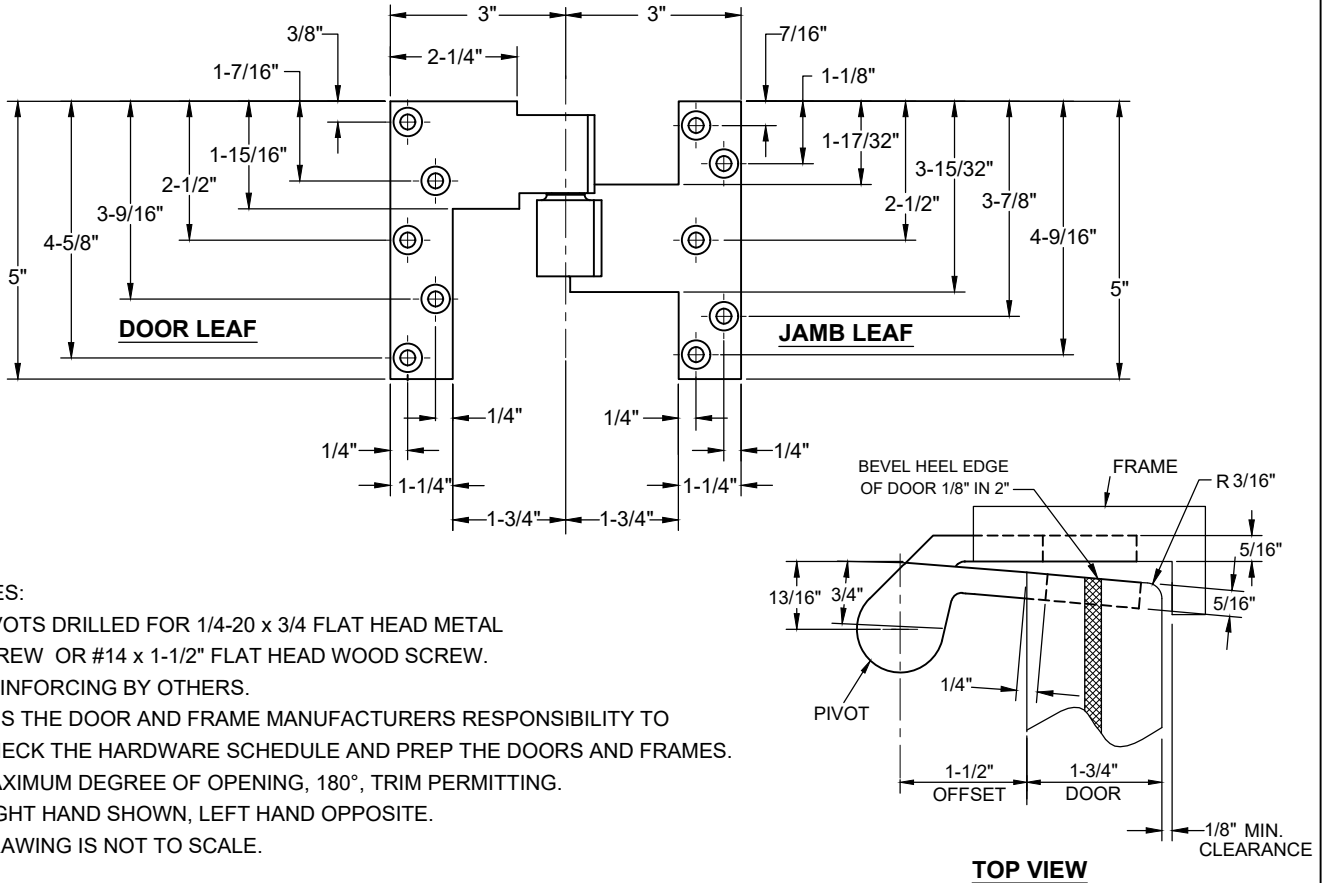


# L019-1.5 INTERMEDIATE PIVOT, 1-1/2" OFFSET, HANDED

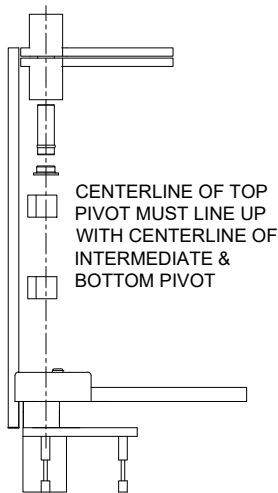
- 1-3/4" LEAD LINED DOOR UP TO 3/4" CLADDING ON PULL SIDE



**NOTES:**

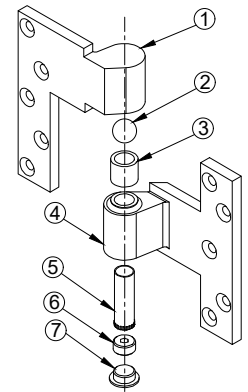
1. PIVOTS DRILLED FOR 1/4-20 x 3/4 FLAT HEAD METAL SCREW OR #14 x 1-1/2" FLAT HEAD WOOD SCREW.
2. REINFORCING BY OTHERS.
3. IT IS THE DOOR AND FRAME MANUFACTURERS RESPONSIBILITY TO CHECK THE HARDWARE SCHEDULE AND PREP THE DOORS AND FRAMES.
4. MAXIMUM DEGREE OF OPENING, 180°, TRIM PERMITTING.
5. RIGHT HAND SHOWN, LEFT HAND OPPOSITE.
6. DRAWING IS NOT TO SCALE.

## INSTALLATION INSTRUCTIONS



NOTE: DOOR SHOULD ALREADY BE HUNG WITH TOP PIVOT AND BOTTOM PIVOT (OR FLOOR CLOSER).

1. MORTISE DOOR & FRAME PER TEMPLATE ABOVE.
2. INSTALL L019-1.5 DOOR & FRAME PIVOT LEAVES.
3. ALIGN PIVOT POINT FROM TOP PIVOT TO BOTTOM ARM (SEE DRAWING).
4. REMOVE 019 END CAP.
5. TURN 019 RETAINER SCREW CLOCKWISE TO RAISE THE DOOR OR COUNTERCLOCKWISE TO LOWER DOOR UNTIL YOU REACH THE DESIRED HEIGHT.
6. TIGHTEN 019 RETAINER SCREW UNTIL YOU FEEL RESISTANCE.
7. REPLACE 019 END CAP.



ITEM NO.	QTY.	PART NO.
1	1	L019-1.5 Door Leaf
2	1	019 Alignment Ball
3	1	019 Needle Bearing
4	1	L019-1.5 Jamb Leaf
5	1	019 Pivot Pin
6	1	019 Retainer Screw
7	1	019 End Cap

**Disclaimer:** This template is to be used for installation, as shown, of said product and is not suitable for every application method. Custom applications, where door sizes, weights and conflicting hardware are a factor, need to be addressed with ABH and proper instructions provided. ABH is not liable for failure or performance of the product due to improper installation methods and/or use. Improper use and/or installation of this product will void the standard warranty.

L019-1.5.01.DWG



www.abhmfg.com  
 E-mail: abhinfo@abhmfg.com  
 Architectural Builders Hardware Mfg., Inc.  
 1222 Ardmore Ave., Itasca, IL 60143  
 630.875.9900; FAX 800.9FAXABH (932.9224)

© 2019 ABH Mfg., Inc.  
 printed in USA

# L019-1.5

PAGE 1 OF 1  
 REVISED 10-21-20