

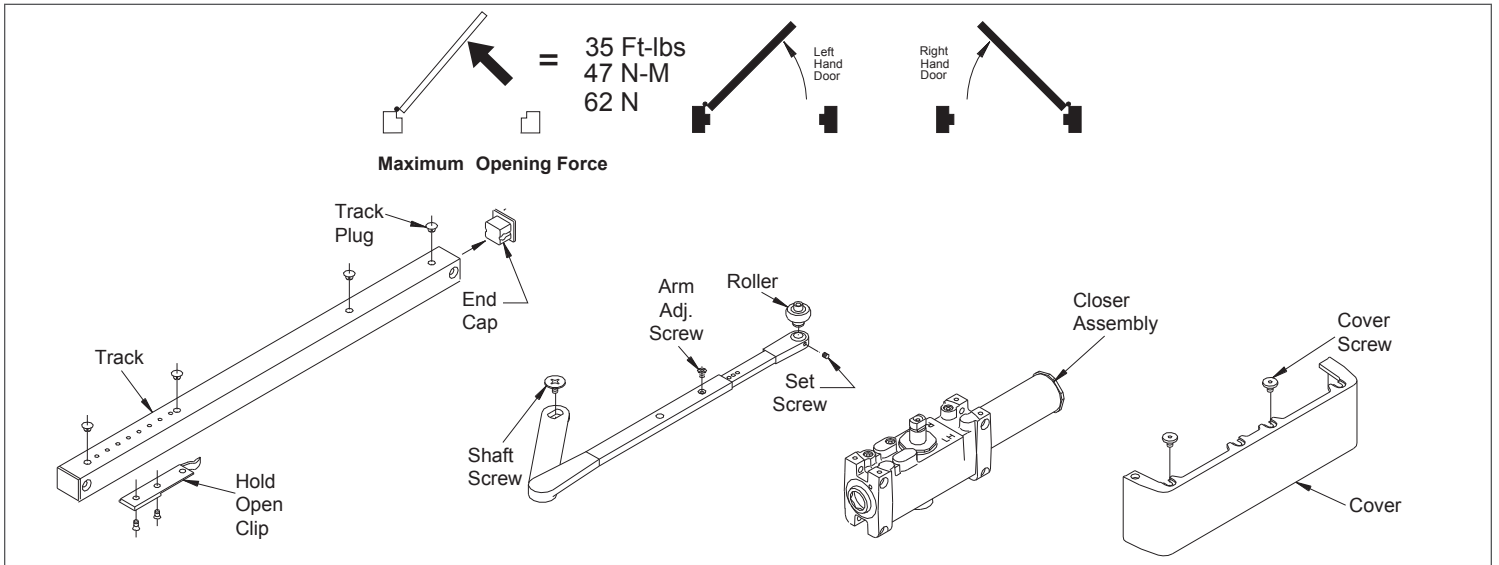


23652

4010T DE

LCN®

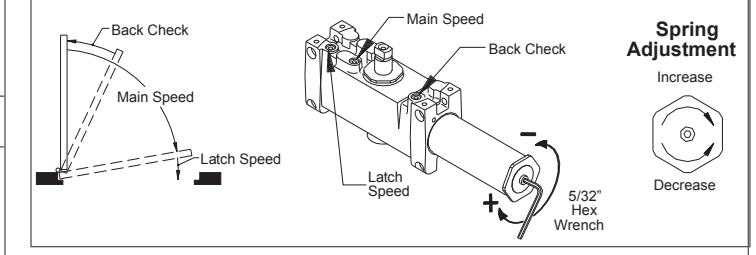
Installation Instructions



1 Installation	3 Backcheck
----------------	-------------

- 1a Closer is handed at factory and must match hand of door. Hand of closer appears in line with three regulating screws.
- 1b Prepare door & frame per proper template. Using fasteners provided, mount closer on door to proper dimensions.
- 1c Place arm on closer shaft & secure with shaft screw.
- 1d Remove end cap from track. Insert roller into track and replace end cap. Put track hole plugs into holes on top of track. Using fasteners provided, mount track on frame.
- 1e Loosen set screw in end of arm; open door to approximately 30° and pull arm over top of door. Connect arm to track roller and tighten set screw firmly.
- 1f Open door slightly and place cover on closer. Hold cover firmly against door while tightening cover screws securely with 3/32" hex wrench.

To increase backcheck intensity, turn regulating screw closest to the latch clockwise. **DO NOT USE ABRUPT BACKCHECK. DO NOT USE DOOR CLOSER AS A DOOR STOP.**

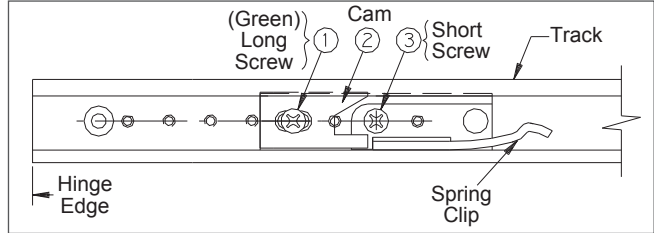


2 Regulation	4 To Install or Adjust Hold-Open
--------------	----------------------------------

Door closer regulation is preset at the factory. Adjust as follows only if necessary: A "normal" closing time from a 90° open position is 5 to 7 seconds, evenly divided between main speed & latch speed (see figure below). Use a 3/32" hex wrench to adjust regulating screws. To slow main speed of door, turn regulating screw closest to shaft clockwise. To slow latch speed, turn regulating screw closest to hinge clockwise.

4 To Install or Adjust Hold-Open

Hold-open track and spring clip assembly are non-handed. Illustration at right shows assembly in track. For 3/16" - 3 5/16" reveals, hold-open is available from 80° - 100° by adjusting arm length and/or location of clip assembly in track. Tip spring clip into track. Locate to desired position, and install screw (3) securely. Tip cam (2) into track. Locate as show. Install long (green) screw (1) securely. Push door into hold-open position. For MORE HOLDING POWER - loosen the long (green) screw (1), slide cam (2) toward LATCH; re-tighten long (green) screw (1) securely. For LESS HOLDING POWER - loosen long (green) screw (1), slide cam (2) toward HINGE edge of door; re-tighten long (green) screw (1) securely.



⚠ CAUTION ⚠

Improper installation or regulation may result in personal injury or property damage. Follow all instructions carefully. For questions, call LCN at 877 - 671 - 7011

Customer Service

1-877-671-7011 www.allegion.com/us

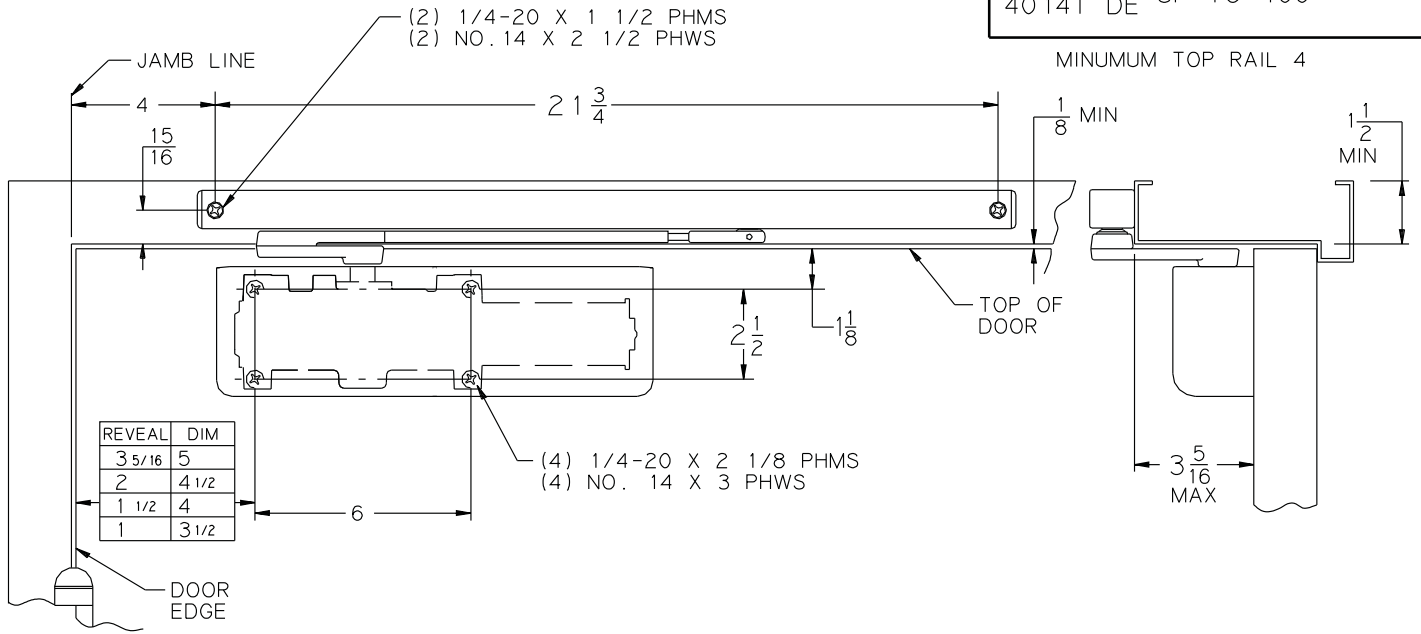


© Allegion 2014
Printed in U.S.A.
23652 Rev. 01/14-e

HINGE FACE MTG APPLIES TO

4013T DE UP TO 100°
4014T DE UP TO 100°

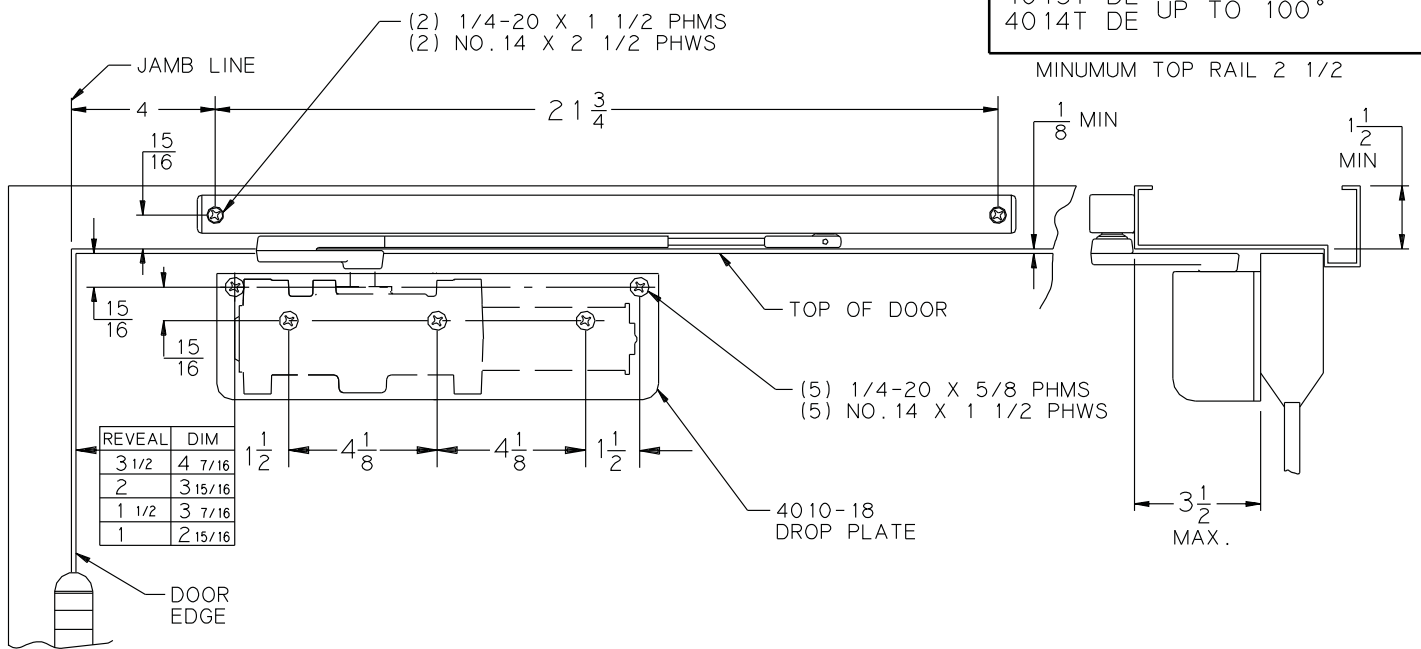
MINIMUM TOP RAIL 4



HINGE FACE ON 18 APPLIES TO

4013T DE UP TO 100°
4014T DE UP TO 100°

MINIMUM TOP RAIL 2 1/2



INCH	1/4	9/16	5/8	3/4	7/8	15/16	1 1/2	1 3/4	2	2 1/8	2 5/32	2 1/4	2 3/8	2 1/2	3	3 1/2	4	4 1/8	4 7/16	5	6	12 1/4	213/4
M.M.	6.4	14.3	15.9	19.1	22.2	23.8	38.1	44.5	50.8	54.0	54.8	57.2	60.3	63.5	76.2	88.9	101.6	104.8	112.7	127	152.4	311.2	552.5

NOTES:

- 1 - RIGHT HAND DOOR AND CLOSER SHOWN - LEFT HAND OPPOSITE.
- 2 - CLOSER SIZE 12 1/4" X 3 1/2" X 2 5/32" (2 3/8" WITH DROP PLATE 4010-18)
- 3 - LOCATE CLOSER AND TRACK FROM CL OF PIVOT OR SWING CLEAR HINGE WHEN USED.
- 4 - FOR 8 3/4" OR LESS DOUBLE EGRESS FRAMES, REVEAL NOT TO EXCEED 3 5/16" (3 1/2" WITH PLATE)
- 5 - REINFORCING PER ANSI/SDI 100 RECOMMENDED FOR HOLLOW METAL DOORS AND FRAMES.

AUXILIARY STOP RECOMMENDED

DO NOT SCALE			
NO	REVISIONS	BY	DATE

LCN[®]

SMOOTHEE CLOSER WITH TRACK AND DOUBLE EGRESS ARM. HINGE FACE MOUNTED ON DOOR OR DROP PLATE

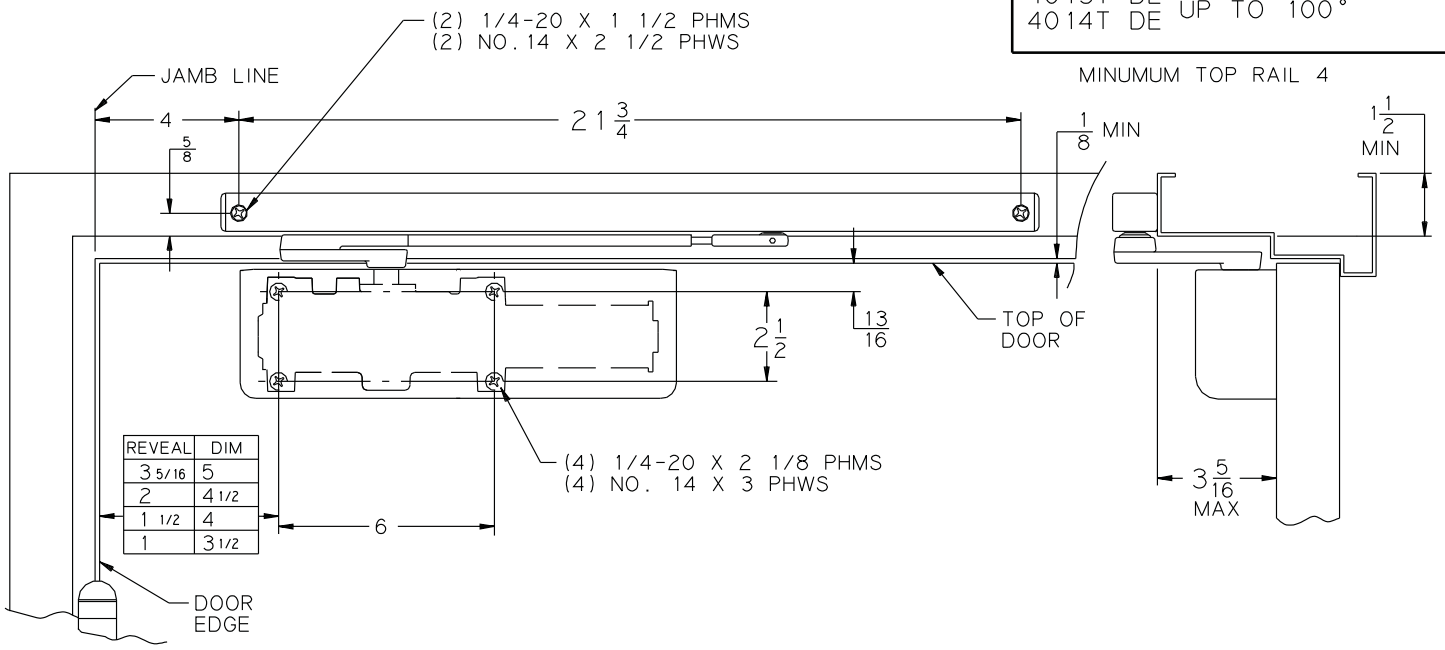
BY 2-19-93 LLZ^{NO.}

APPR. 2-19-93 GSN

4010T-DE

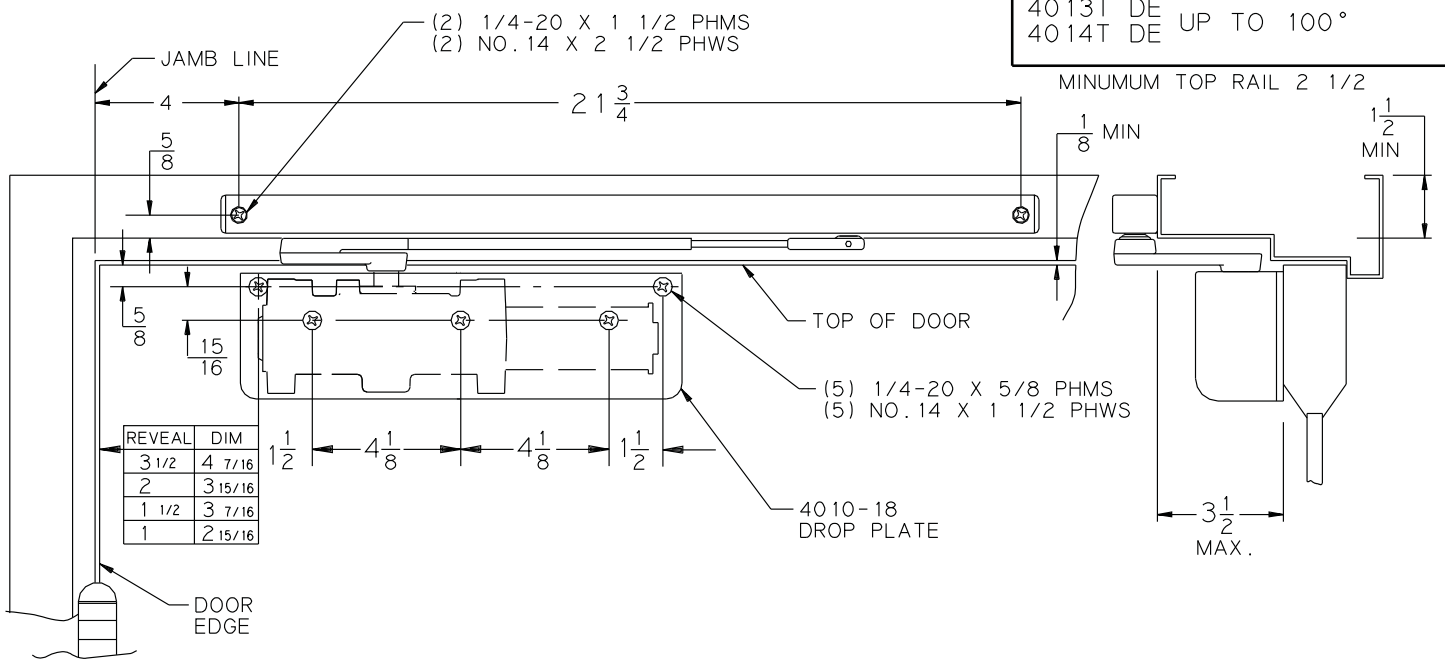
5/8 STEP DOWN FRAME

HINGE FACE MTG APPLIES TO
4013T DE UP TO 100°
4014T DE UP TO 100°



5/8 STEP DOWN FRAME

HINGE FACE ON 18 APPLIES TO
4013T DE UP TO 100°
4014T DE UP TO 100°



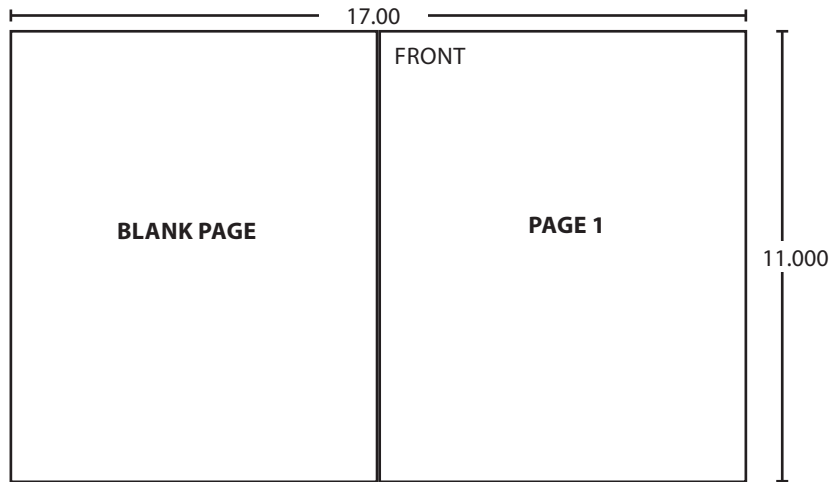
INCH	1/4	9/16	5/8	3/4	7/8	15/16	1 1/2	1 3/4	2	2 1/8	2 5/32	2 1/4	2 3/8	2 1/2	3	3 1/2	4	4 1/8	4 7/16	5	6	12 1/4	21 3/4
M.M.	6.4	14.3	15.9	19.1	22.2	23.8	38.1	44.5	50.8	54.0	54.8	57.2	60.3	63.5	76.2	88.9	101.6	104.8	112.7	127	152.4	311.2	552.5

NOTES:

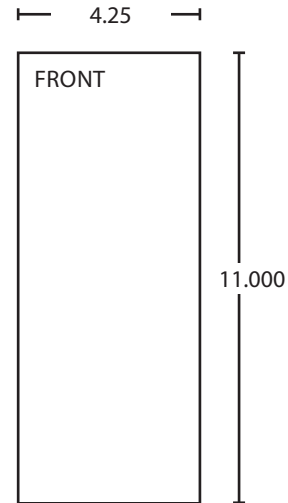
- 1 - RIGHT HAND DOOR AND CLOSER SHOWN - LEFT HAND OPPOSITE.
- 2 - CLOSER SIZE 12 1/4" X 3 1/2" X 2 5/32" (2 3/8" WITH DROP PLATE 4010-18)
- 3 - LOCATE CLOSER AND TRACK FROM CL OF PIVOT OR SWING CLEAR HINGE WHEN USED.
- 4 - FOR 8 3/4" OR LESS DOUBLE EGRESS FRAMES, REVEAL NOT TO EXCEED 3 5/16" (3 1/2" WITH PLATE).
- 5 - REINFORCING PER ANSI/SDI 100 RECOMMENDED FOR HOLLOW METAL DOORS AND FRAMES.

AUXILIARY STOP RECOMMENDED

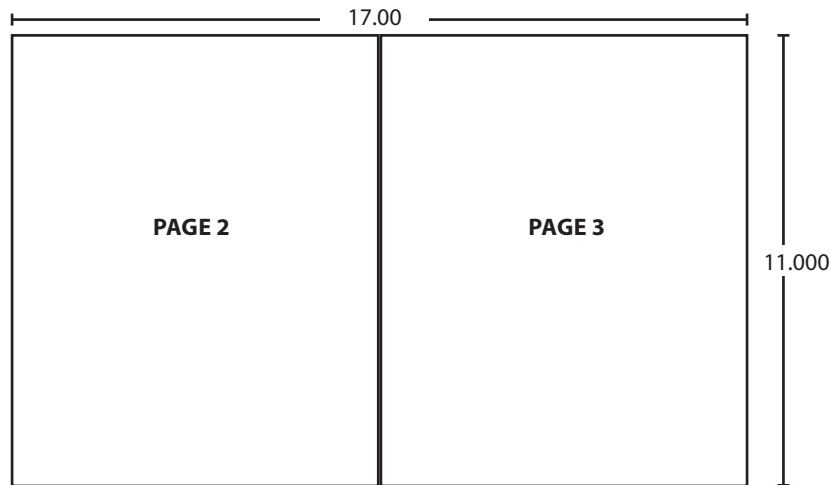
DO NOT SCALE			
NO.	REVISIONS	BY	DATE
			NO. 4010T-DE
SMOOTHIE CLOSER WITH TRACK AND DOUBLE EGRESS ARM, HINGE FACE MOUNTED ON DOOR OR DROP PLATE			BY 2-19-93 LLZ APPR. 2-19-93 GSN



BEGINNING SHEET



FOLDED SHEET



Additional Notes:
1. None

Revision History						Revision Description: E > Revised artwork					
E	F	G	H	J	K						
043228											
Material						Edited By		Approved By		EC Number	Release Date
White Paper						D. Myers		M. Sasso		043228	01-01-14
Notes						Title					
1. printed two sides						4010T DE Series Instruction Sheet					
2. printed black						Creation Date		Number		Revision	
3. tolerance ± .13						04-27-10		23652		E	
4. printed in country may vary						Created By		Activity		© Allegion 2014	
5. drawings not to scale						N/A		3899 Hancock Expwy Security, CO 80911			
						Software: InDesign CS6					