

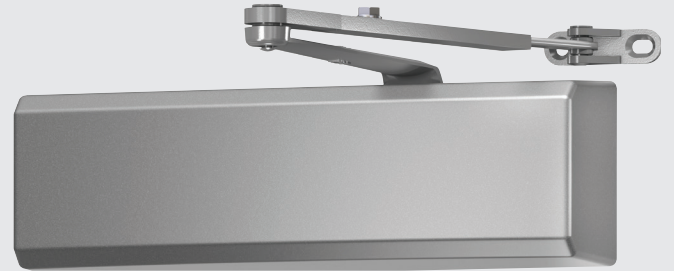


ALLEGION™

LCN®

## 4050A Series

**Heavy duty cast aluminum  
door closer**



Rugged durability and dependability,  
at a competitive price.

The 4050A Series cast aluminum closer is engineered for durability and high frequency traffic areas. It is ideal for commercial building applications and competitive specification situations that demand a combination of quality, reliability and value.

This cast aluminum door closer offers premium features like powder coating, a full complement bearing, Liquid X All Weather Fluid, which eliminates the need for seasonal adjustment, and a 25-year warranty. With a standard plastic cover and optional metal cover, 6 standard colors and custom options (RAL custom colors and special templates), the 4050A Series is the right choice for a wide range of heavy duty applications.

### Key features

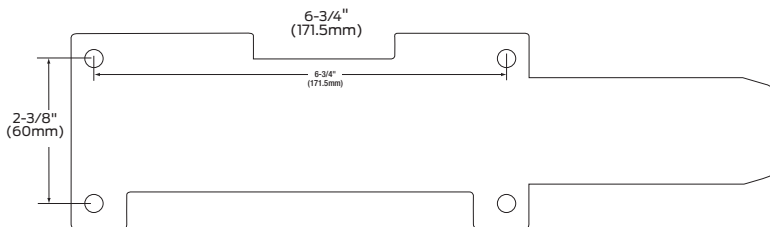
- Cast aluminum body
- Patent pending design
- Includes template
- Universal screw pack
- Full complement bearing
- Liquid X All Weather Fluid
- Adjustable spring size 1-6
- Non-handed
- 25-year warranty

**With LCN, you get the great product features you need, plus so much more.**

Every 4050A Series closer we make is backed by LCN's proven history of durability, reliability and consistency that you can count on. We have people in place committed to supporting you and how the product performs in your facility. Whether we're consulting on code, advising a door specification or answering installation questions, we are focused on making your interaction with LCN a positive one.

**4050A Series Specifications**

<b>Certifications</b>	Grade 1 - ANSI A156.4, UL/cUL, ADA, 100 hour salt spray, meets BAA - buy american act	
<b>Body Construction</b>	<ul style="list-style-type: none"> <li>▪ Cast aluminum body</li> <li>▪ Full complement bearings</li> <li>▪ 1 - 1/2" piston diameter</li> <li>▪ 11/16" diameter double heat treated pinion journal</li> </ul>	
<b>Fluid</b>	Liquid X All Weather Fluid	
<b>Handing</b>	Non-handed	
<b>Templating</b>	Includes template 2 - 3/8" x 6 - 3/4" mounting hole pattern	
<b>Size</b>	Adjustable spring size 1-6	
<b>Warranty</b>	25 years	
<b>Fasteners</b>	Standard includes self reaming and tapping (srt) and machine screws. Thru bolts, wood screws and torx security screws are optional.	
<b>Arms</b>	<p>Standard tri-pack includes arms for regular pull side, top jamb or parallel arm mounting</p> <p>Optional arms:</p> <ul style="list-style-type: none"> <li>▪ Hw/PA - hold open w/62PA (4050A-3049/PA)</li> <li>▪ LONG - long arm for deep reveal (4050A-79LR)</li> <li>▪ HLONG - hold open long arm (4050A-3048L)</li> <li>▪ EDA - extra duty parallel arm (4050A-3077EDA)</li> <li>▪ EDA/62G - extra duty parallel arm - extra clearance (4050A-3077EDA/G)</li> <li>▪ HEDA - hold open extra duty parallel arm (4050A-3049EDA)</li> <li>▪ HEDA/62G - extra duty parallel arm hold open - extra clearance (4050A-3049EDA/G)</li> <li>▪ CUSH - cush-n-stop (4050A-3077CNS)</li> <li>▪ HCUSH - hold open cush-n-stop (4050A-3049CNS)</li> <li>▪ SCUSH - spring cush-n-stop (4050A-3077SCNS)</li> <li>▪ SHCUSH - spring hold open cush-n-stop (4050A-3049SCNS)</li> <li>▪ REG/62A - regular arm - extra clearance (4050A-3077/62A)</li> </ul>	
<b>Finishes/Colors</b>	<ul style="list-style-type: none"> <li>▪ Aluminum (689)</li> <li>▪ Statuary bronze (690)</li> <li>▪ Light bronze (691)</li> <li>▪ Black (693)</li> </ul>	<ul style="list-style-type: none"> <li>▪ Dark bronze (695)</li> <li>▪ Brass (696)</li> <li>▪ Custom colors optional</li> </ul>
<b>Brackets</b>	<ul style="list-style-type: none"> <li>▪ 30 - Cush shoe support (30)</li> <li>▪ 62A - Auxiliary shoe for parallel mount - extra clearance (62A)</li> <li>▪ 62PA - Auxiliary shoe for parallel mount (62PA)</li> <li>▪ 419 - Panel adaptor for parallel mount (419)</li> </ul>	
<b>Accessories</b>	<ul style="list-style-type: none"> <li>▪ 18 - Plate for hinge side mount (18)</li> <li>▪ 18PA - Plate for parallel arm (18PA)</li> <li>▪ 18G - Plate for extra clearance for use with 62g arm (18G)</li> <li>▪ 61 - Blade stop for cush shoe support(61)</li> <li>▪ Full plastic cover (72); optional full metal cover (72MC)</li> <li>▪ Optional SRI</li> </ul>	



Contact us at 877-671-7011 to consult with an LCN Representative or Technical Advisor.  
 Learn more at [Allegion.com/us](http://Allegion.com/us)

**About Allegion**

Allegion (NYSE: ALLE) is a global pioneer in seamless access, with leading brands like CISA®, Interflex®, LCN®, Schlage®, SimonsVoss® and Von Duprin®. Focusing on security around the door and adjacent areas, Allegion secures people and assets with a range of solutions for homes, businesses, schools and institutions. Allegion had \$2.7 billion in revenue in 2018, and sells products in almost 130 countries. For more, visit [www.allegion.com](http://www.allegion.com).

