



Surface mounted closer

4110 Series

Overview

The 4110 is LCN's best performing heavy duty closer designed specifically for institutional and other rugged high traffic applications.



Cylinder

4111(6)-3071

Cast iron cylinder assembly

Handing

Handed

Sizing

Adjustable spring size 1-5, or sized 6

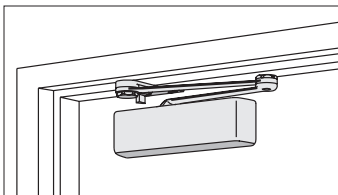
Includes patented Green Dial

- 4111 (adjustable from size 1 to 5)
- 4116 (DEL, SHCUSH or HCUSH arm not available)

Available cylinder options

| | |
|-----|-----------------------------|
| DEL | Delayed action cylinder |
| AVB | Advanced variable backcheck |

Mounting



Parallel arm (push side)

Finishes

Powder coat finishes



689
Aluminum



690
Statuary Bronze



691
Light Bronze



693
Black



695
Dark Bronze



696
Brass

150+ additional custom colors available using the RAL numbering system

Metal plated finishes



632
Bright Brass



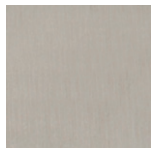
633
Satin Brass



639
Satin Bronze



643e
Satin Bronze,
Blackened



646
Satin Nickel



651
Bright Chrome



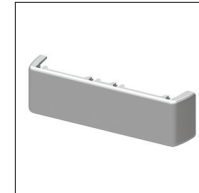
652
Satin Chrome

Available finish options

| | |
|-------|---|
| MTLPC | Brite metallic: Custom powder coat finish, which resembles that of US26 or US26D plated finish. |
| SRI | For installations where a higher level of protection against weather conditions, or the effects of a potentially corrosive atmosphere is required, LCN offers a special rust inhibiting (SRI) process. Ferrous metal components receive an SRI pretreatment and a standard powder coat finish of your choice, or a custom powder coat finish for a nominal additional cost. Closers treated with the SRI process exceed the 100 hour protection level available with standard LCN powder coated finishes. |

Covers

Standard cover

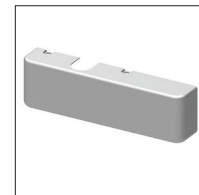


4110-72

Plastic cover

- Non-handed
- Standard

Optional covers



4110-72MC

Metal cover

- Handed
- Required for plated finishes and custom powder coat finishes
- Optional

Arms



**4110-3049EDA
Hold-open arm**

- Handed
- Optional
- Provides hold-open function, adjustable at shoe



**4110-3049FL
Fusible link arm**

- Handed
- Releases hold-open function adjustable at shoe when exposed to temperatures above 165° F
- Optional
- NOTE: Check local codes before specifying FL arms. NOT A life safety product!



**4110-3077CNS
Cush-N-Stop arm**

- Non-handed
- Features solid forged steel main arm and forearm with built-in stop in soffit shoe



**4110-3077EDA
Extra duty arm**

- Non-handed
- Features forged, solid steel main and forearm for potentially abusive installations



**4110-3077EDA/ 62G
Extra duty arm**

- Non-handed
- Features forged, solid steel main and forearm for potentially abusive installations
- Optional 4110-62G thick hub shoe for blade stop clearance



**4110-3049CNS
HCUSH arm**

- Non-handed
- Provides hold-open function with templated stop/ hold-open points.
- Handle controls hold-open function



**4110-3077SCNS
Spring CUSH arm**

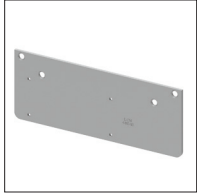
- Non-handed
- For abusive applications features solid forged steel main arm and forearm with spring loaded stop in the soffit shoe
- Optional



**4110-3049SCNS
Spring HCUSH arm**

- Non-handed
- For abusive applications features solid forged steel main arm and forearm with spring loaded stop in the soffit shoe
- Handle controls hold-open function
- Optional

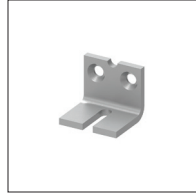
Installation accessories



4110-18

Plate

- Required for push side mount where top rail is less than 5-1/8" (130 mm), measured from the stop
- Requires minimum 2" (51 mm) minimum top rail



4110-30

CUSH shoe support

- Provides anchorage for fifth screw used with CUSH arm, where reveal is less than 3-1/16" (78 mm)



4110-61

Blade stop spacer

- Lowers parallel arm shoe to clear 1/2" (13 mm) blade stop



4110-419

PA flush panel adapter

- Provides horizontal mounting surface for CUSH shoe on single rabbeted or flush frame

Fasteners

Self-reaming and tapping screws included standard

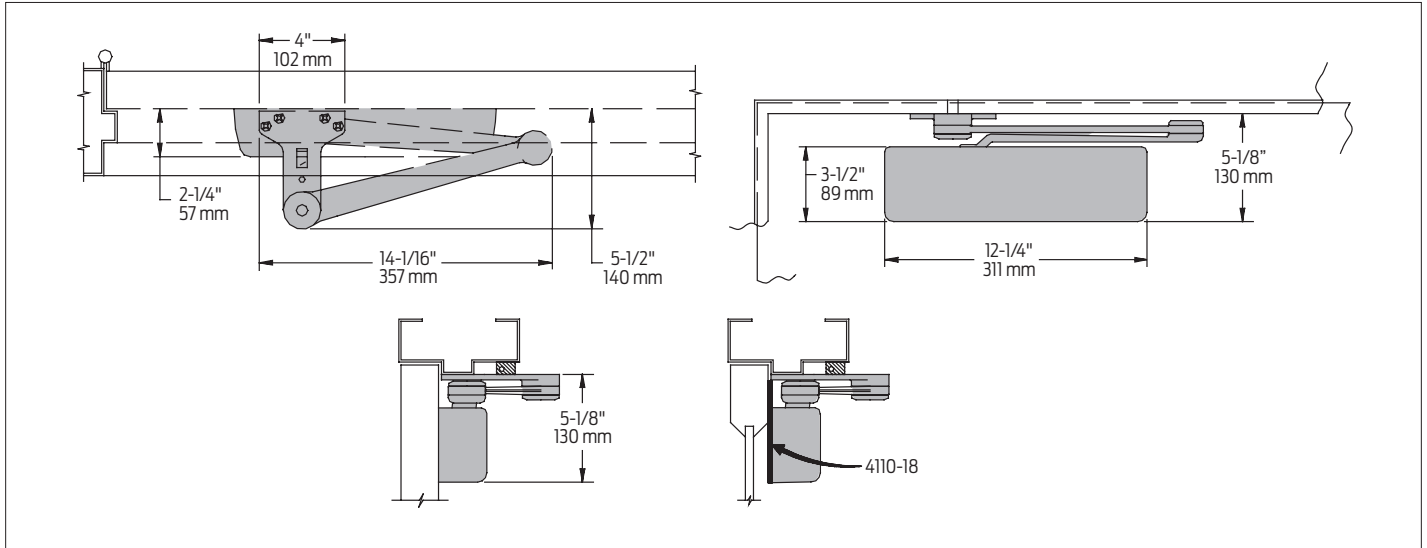
Fastener pack options

| | |
|--------|--|
| TBSRT | TB ¹ with self-reaming and tapping screws |
| WMS | Wood and machine screw |
| TBWMS | TB ¹ , wood and machine screw |
| TORX | TORX machine screw |
| TBTORX | TB ¹ and TORX machine screw |

¹ Specify door thickness if other than 1-3/4"

Dimensions and mounting

Parallel arm (push side) mounting



Specifications

| | |
|---------------------------|---|
| Accessibility | Available with less than 5.0 lbs. opening force on 36" door |
| Certifications/ approvals | <ul style="list-style-type: none"> ■ Grade 1 - ANSI A156.4 ■ UL 10C ■ Meets BAA - Buy American Act |
| Degree of operation | <p>EDA</p> <p>Max opening: 180°</p> <p>Hold open: 180°</p> <p>Cush</p> <p>Max opening: 110°</p> <p>Hold open: 110°</p> |
| Environmental conditions | <ul style="list-style-type: none"> ■ Approved for interior use ■ Approved for exterior use (SRI coated only) ■ LCN's standard all weather fluid performs to temperature ranges from 120°F (49°C) to -30°F (-35°C) ■ LCN's powder coat finish surpasses 100 hours of salt spray which is over four times the ANSI standard for corrosion resistance. |
| Warranty | 30 years |
| Standard features | <ul style="list-style-type: none"> ■ Cast iron body ■ Full complement bearing ■ 1-1/2" diameter piston ■ 11/16" diameter double heat treated pinion journal |