



27176

ST-2701

LCN®

Installation Instructions

This product is not intended for use with conventional hinges or latching devices.

⚠ WARNING ⚠

Do not remove spring tube from this product. Extremely strong springs inside. If repairs are necessary, return to factory.

1

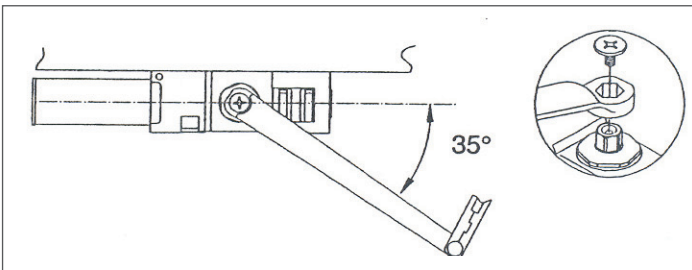
Mount closer body in pocket according to dimensions shown on template. Wall of pocket must be reinforced to ensure mounting of body.

2

Mount rod and shoe on door according to dimensions shown on template.

3

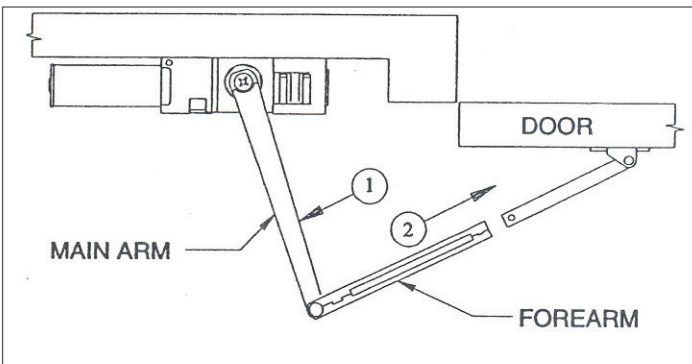
Place arm on closer shaft with main arm 35° to closer body (see illustration). Do not rotate closer shaft. Secure arm to shaft with arm screw.



4

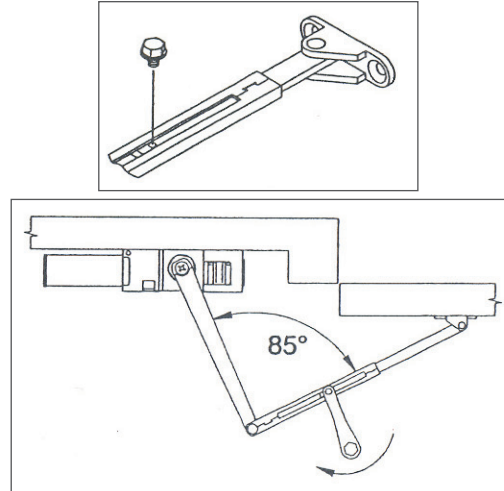
With door in closed position:

1. Pull closer main arm away from door.
2. Slowly release arm and insert rod into forearm (see illustration).



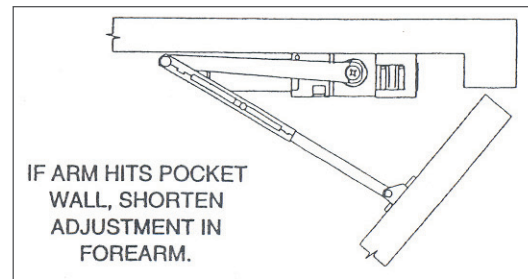
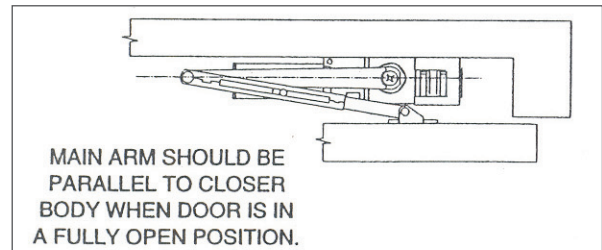
5

Adjust arm to form slightly less than a 90° angle with door in closed position. Secure with arm set screw. (see illustration)



6

Slowly open door into pocket. DO NOT FORCE if door will not open completely. If door will not open completely into pocket, adjust arm as shown in below illustrations.



Customer Service

1-877-671-7011

www.allegion.com/us

© Allegion 2014
Printed in U.S.A.
27176 Rev. 01/14-b

Closing speed adjustment.

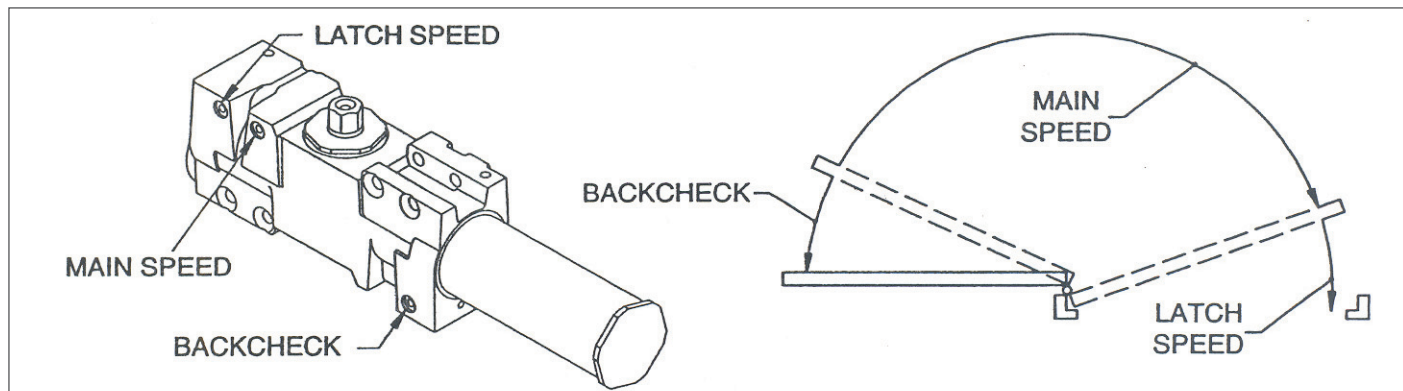


Improper installation or regulation may result in personal injury or property damage.

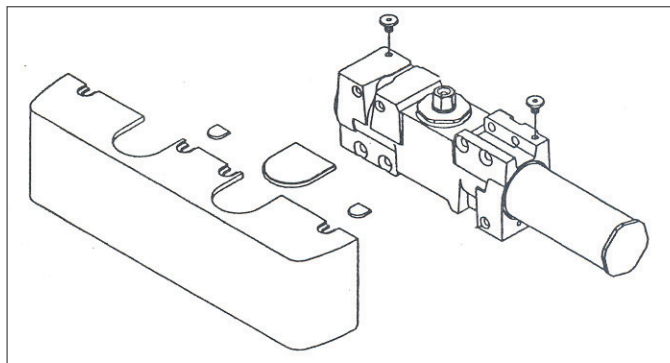
① **Important**

- Regulation: Do not allow door to slam into frame. A "normal" closing time from 90° open position is 5 to 7 seconds, evenly divided between main swing speed and latch swing speed. Use socket key furnished to adjust speed. To slow main speed of door, turn regulating screw nearest shaft clockwise. To slow latch speed, turn regulating screw nearest latch clockwise.
- Backcheck: To increase backcheck intensity turn regulating screw farthest from hinge clockwise.

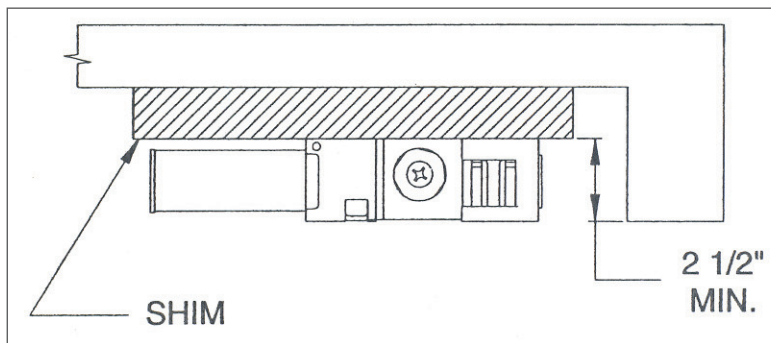
① **DO NOT USE ABRUPT BACKCHECK**



Mount cover on closer body and secure with two cover screws. Tighten screws firmly.



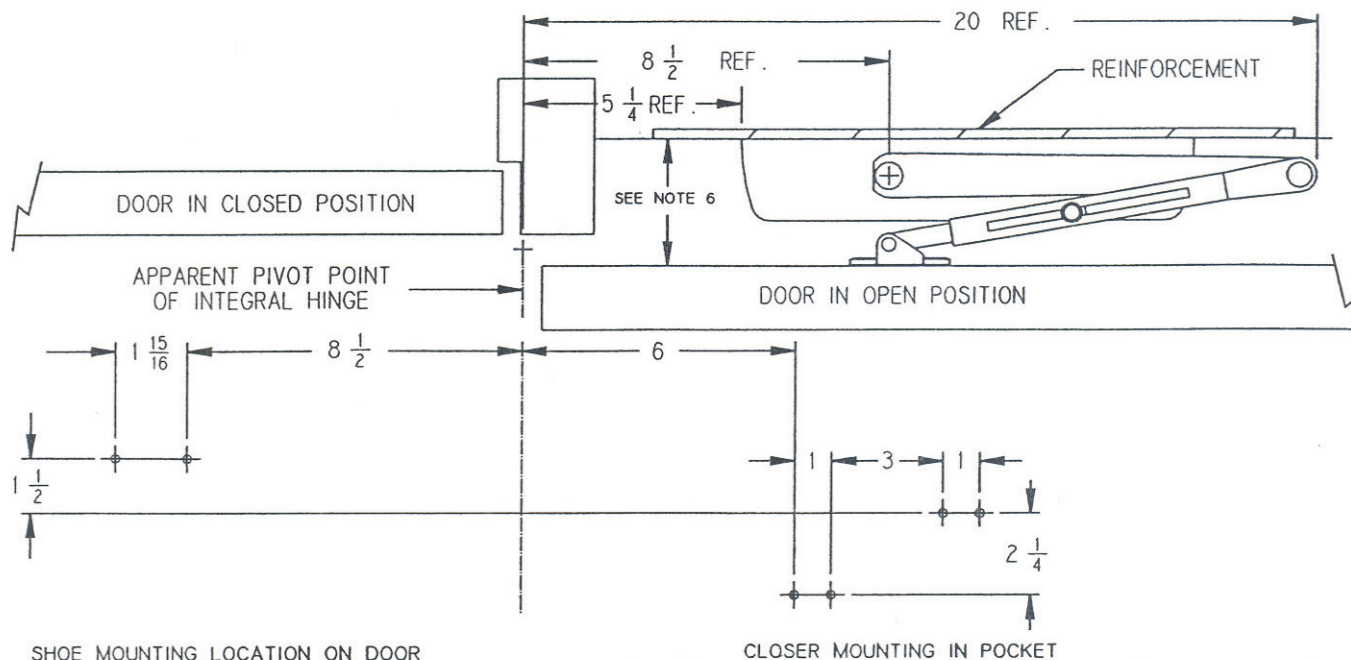
If closing power needs to be increased, shim closer out from wall to a minimum 2 1/2" pocket depth. This will provide an extra 1/2 pound of closing force at latch.



SPECIAL 180° POCKET CLOSER FOR INTEGRAL HINGE TYPE DOORS ONLY.
SPECIAL CYLINDER AND ARM REQUIRED. THIS APPLICATION CAN NOT BE USED WITH THE STD. 4041

LEFT HAND POCKET CLOSER
INSTALLATION SHOWN

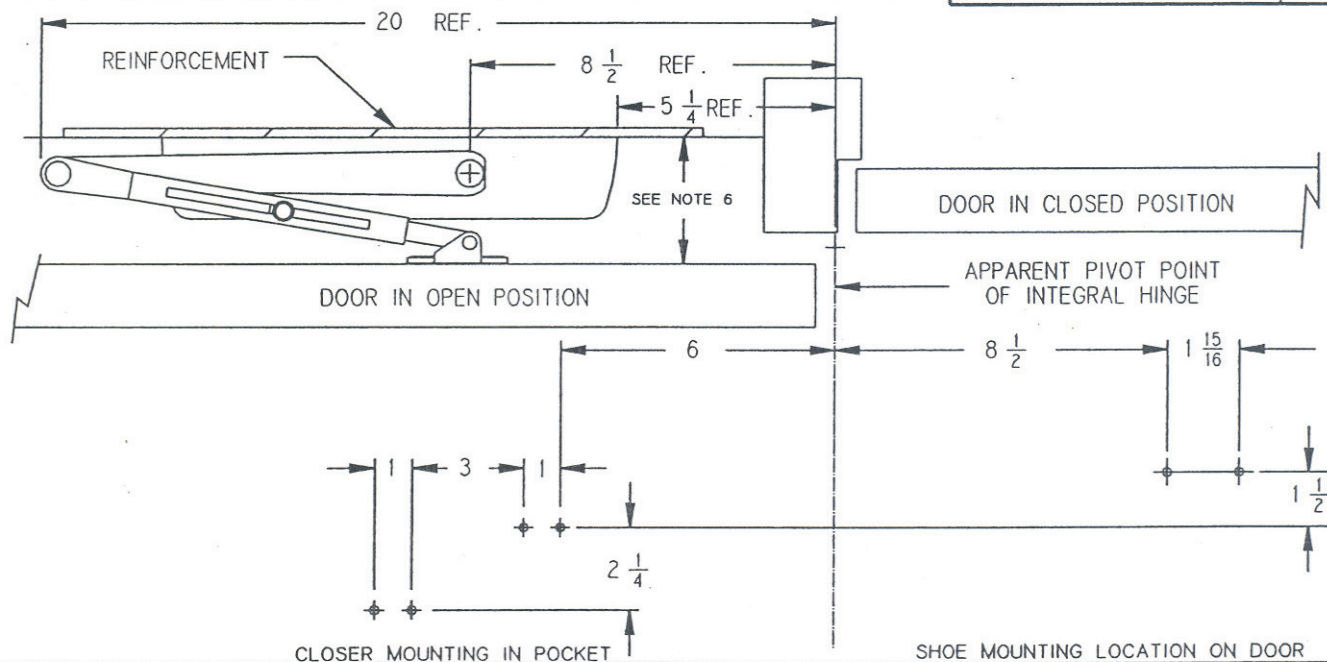
ST-2701



SPECIAL 180° POCKET CLOSER FOR INTEGRAL HINGE TYPE DOORS ONLY.
SPECIAL CYLINDER AND ARM REQUIRED. THIS APPLICATION CAN NOT BE USED WITH THE STD. 4041

RIGHT HAND POCKET CLOSER
INSTALLATION SHOWN

ST-2701



GENERAL NOTES-

1. FOR USE WITH INTEGRAL HINGE AND LATCHING DOORS ONLY. NOT FOR USE WITH CONVENTIONAL HINGES OR LATCHING MECHANISMS.
2. LOCATE CLOSER AND SHOE FROM APPARENT ϕ OF INTEGRAL HINGE.
3. REINFORCING PER ANSI/SDI-100 RECOMMENDED FOR HOLLOW METAL DOORS AND FRAMES.
4. CLOSER SIZE IS $12 \frac{1}{4} \times 3 \frac{1}{2} \times 2 \frac{5}{32}$.
5. MOUNTING SCREWS ARE $1/4$ -20 M.S. OR 14 W.S.
6. MAXIMUM POCKET DEPTH IS 4". MINIMUM IS $2 \frac{1}{2}$ ".
7. THIS APPLICATION CAN NOT BE USED WITH A STANDARD 4041 CLOSER. ST-2701 REQUIRES A SPECIAL CYLINDER AND ARM.

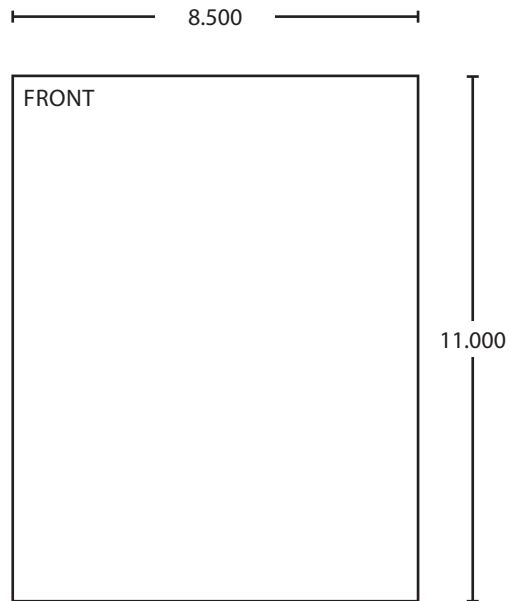
LCN No. ST-2701 has been assigned to these special details. All correspondence, orders, etc. must refer to this number.

No.	REVISION	BY	DATE
1	CAD CONVERSION	TA	5/94
2	ADDED COVER DIM.	TA	3/96
3	8 1/2 was 6 3/8 change per openings	TA	12/97

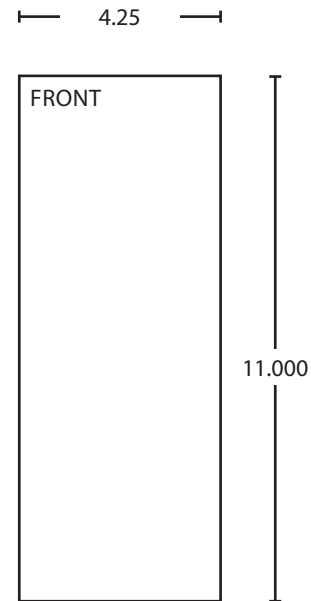
APP BY TAA 5/95
DO NOT SCALE

SPECIAL 180° POCKET CLOSER FOR
INTEGRAL HINGE TYPE DOORS ONLY

ST-2701



BEGINNING SHEET



FOLDED SHEET

Additional Notes:
1. None

Revision History						Revision Description: B > Revised artwork			
A	B	C	D	E	F				
N/A	043812								
Material White Paper						Edited By	Approved By	EC Number	Release Date
						D. Myers	M. Sasso	043812	01-01-14
Notes 1. printed two sides 2. printed black 3. tolerance $\pm .13$ 4. printed in country may vary 5. drawings not to scale						Title ST-2701 Instruction Sheet			
						Creation Date 04-27-10	Number 27176	Revision B	
						Created By N/A	Activity 3899 Hancock Expwy Security, CO 80911	© Allegion 2014	
						Software: InDesign CS6			