



28073

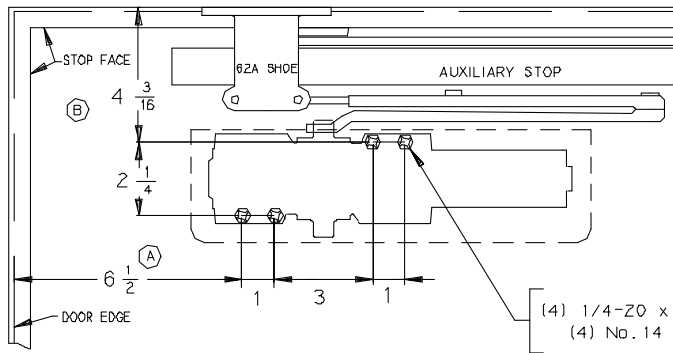
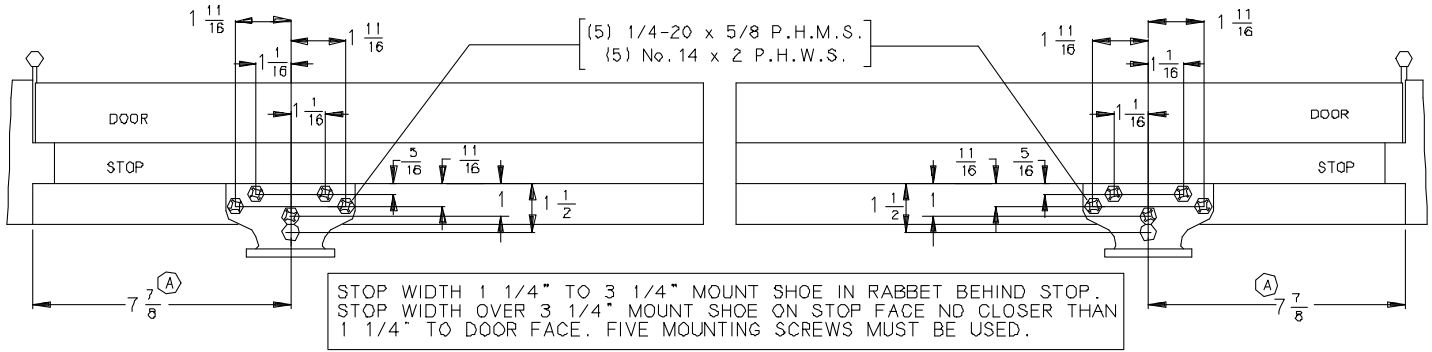
ST-2776

LCN®

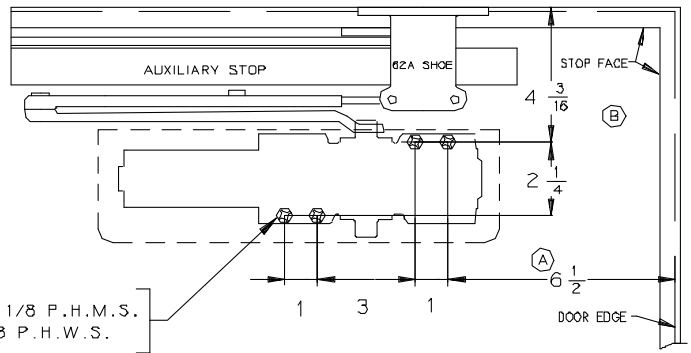
62A Shoe, 4040-18 Plate

Installation Instructions

STOP FACE MOUNTED WITH 62A SHOE

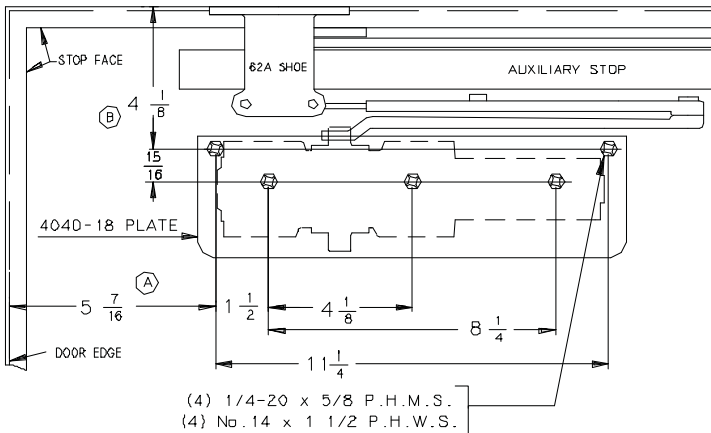
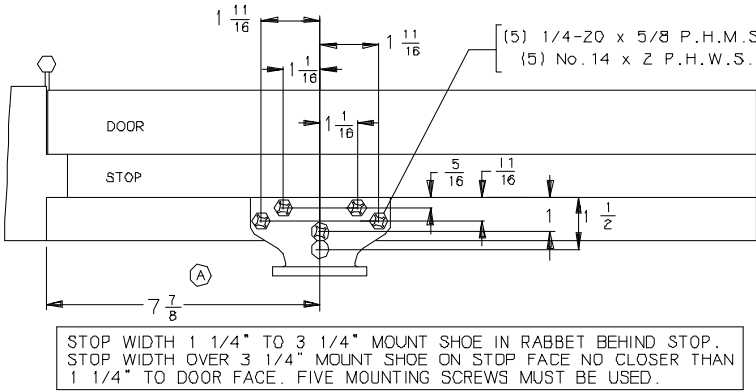


LEFT HAND



RIGHT HAND

STOP FACE MOUNTED WITH 62A SHOE AND 4040-18 PLATE

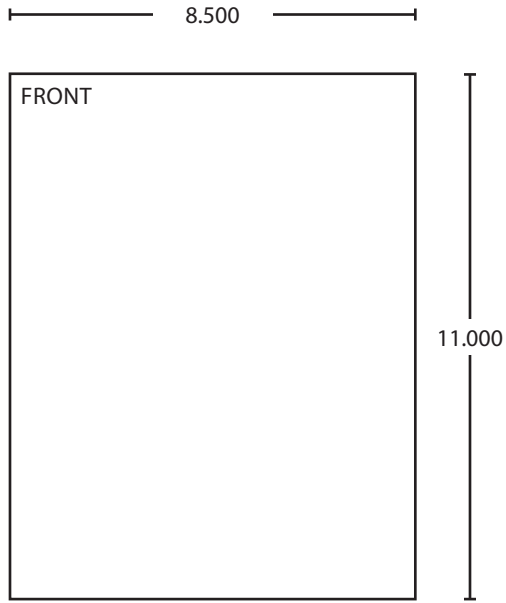


LEFT HAND SHOWN. RIGHT HAND OPPOSITE

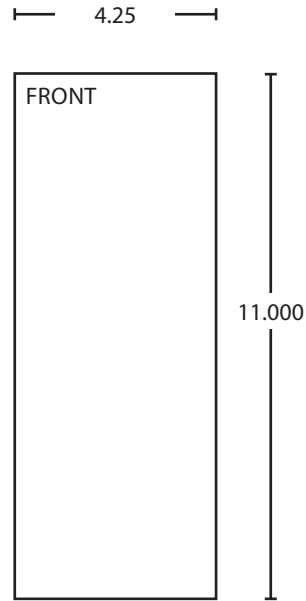
General Notes

- A. Locate closer and shoe from center line of pivot or swing clear hinge when used.
- B. This dimension is always from the same surface as the shoe is mounted on.
- C. Top rail less than 7" requires a drop plate.
- D. The auxiliary stop is shown for reference only. This template may be used to provide clearance for other types of hardware such as coordinators, soundseals etc.
- E. Reinforcing per ANSI/SDI-100 recommended for hollow metal door and frame.
- F. Closer size: 12-1/4 x 3-1/2 x 2-5/32
- G. Backcheck selector valve must be turned all the way in for this installation. Refer to the instruction sheet packed with the closer.





BEGINNING SHEET



FOLDED SHEET

Additional Notes:
1. None

Revision History						Revision Description: B > Revised artwork					
A	B	C	D	E	F						
N/A	043812										
Material						Edited By		Approved By		EC Number	Release Date
White Paper						R. Byun		M. Sasso		043812	01-01-14
Notes						Title					
1. printed one side						4040/4041 Stop Face with 62A Shoe Instruction Sheet					
2. printed black						Creation Date		Number		Revision	
3. tolerance ± .13						11-15-10		28073		B	
4. printed in country may vary						Created By		Activity		© Allegion 2014	
5. drawings not to scale						N/A		3899 Hancock Expwy Security, CO 80911			
						Software: InDesign CS6					