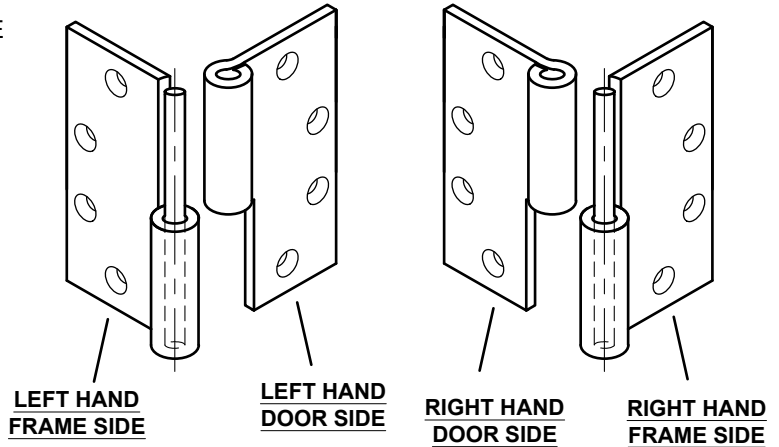
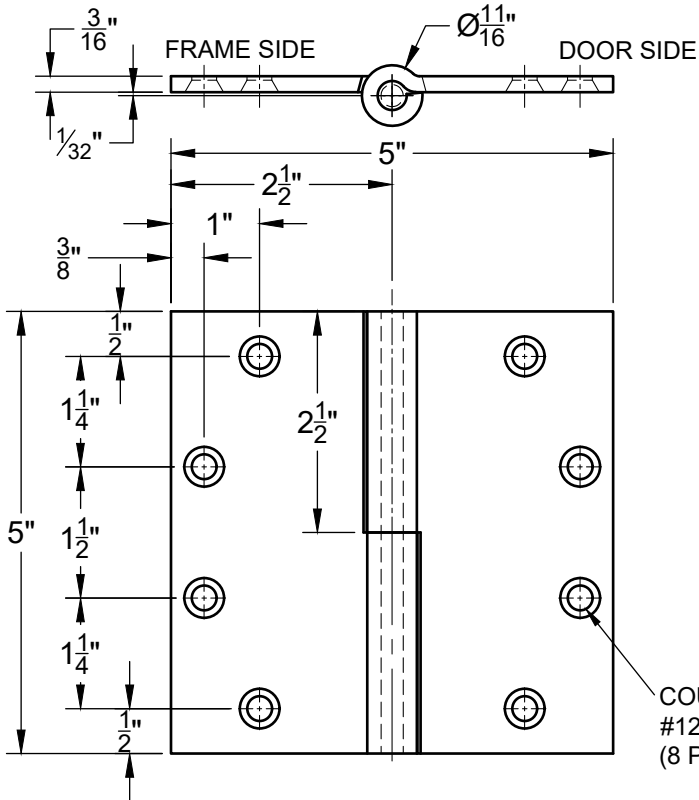


LO5050- LIFT OFF HINGE - HANDED

• 5" X 5"

- FOR 2-1/4"-2-3/4" THICK DOORS
- FOR DOOR WIDTHS 36" to 48"



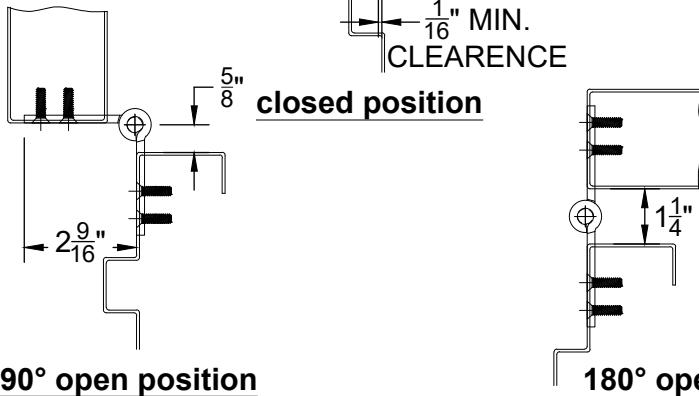
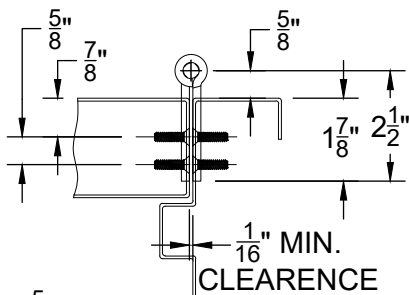
COUNTERSINK FOR #12 FLAT HEAD SCREW (8 PLACES)

DOOR HEIGHT	#OF HINGES REQUIRED
60" OR LESS	2
61"-80"	3
81"-97"	4
98"-109"	5
109" OR MORE	6

**LEFT HANDED HINGE SHOWN
RIGHT HAND OPPOSITE**

NOTES:

1. LIFT-OFF HINGES ARE DESIGNED TO BE INSTALLED "FULL MORTISE".
2. CAN BE USED ON HOLLOW METAL OR WOOD FRAMES AND DOORS.
3. HINGES ARE HANDED. SEE ABOVE PICTURE FOR RIGHT HAND AND LEFT HAND. PIN ALWAYS ON FRAME LEAF.
 - (a) LH/RHR DOOR, USE "LEFT HAND" HINGE.
 - (b) RH/LHR DOOR, USE "RIGHT HAND" HINGE
4. 1/32" TOLERANCE ON ALL PARTS
5. DO NOT SCALE DRAWING



SCREW DETAIL	
QTY.	DESCRIPTION
8	12-24x3/4" PHILLIPS FLAT HEAD MACHINE SCREW
8	#12x1-1/2" PHILLIPS FLAT HEAD SHEET METAL SCREW



www.abhmfg.com
 E-mail: abhinfo@abhmfg.com
 Architectural Builders Hardware Mfg., Inc.
 1222 Ardmore Ave., Itasca, IL 60143
 630.875.9900; FAX 800.9FAXABH (932.9224)

LO5050 LIFT-OFF HINGE

© 2021 ABH Mfg., Inc.
 printed in USA

PAGE 1 OF 1
 REVISED 12-14-21

LO5050 LIFT OFF HINGE-01.DWG