

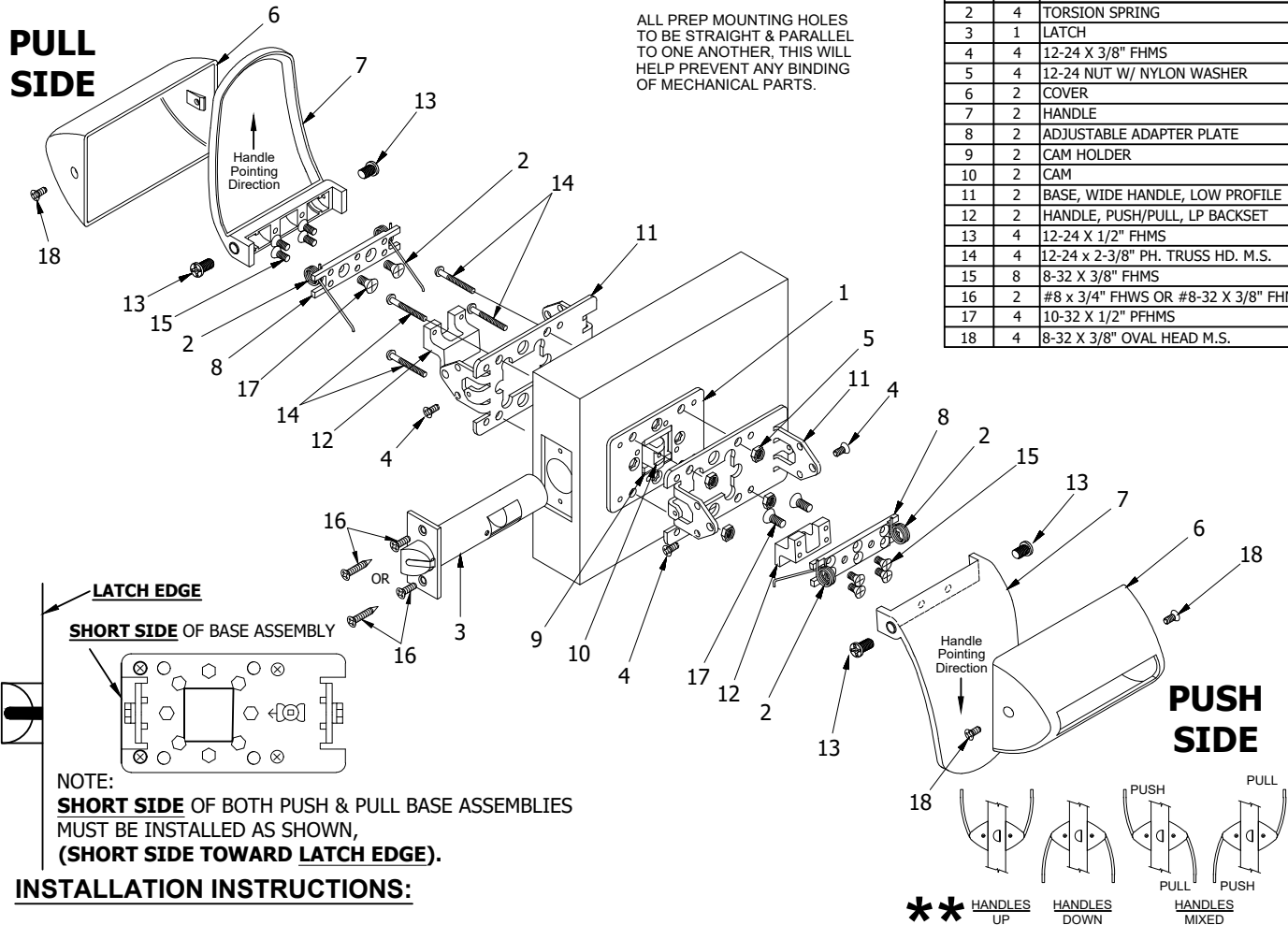
LR6000Q - QUIET (CYLINDRICAL LATCH) INSTALLATION INSTRUCTIONS

NOTES

1. TRIM CAN BE MOUNTED UP, DOWN, VERTICALLY. **
2. USES STANDARD 161 DOOR PREP.
3. VISION LITE MUST BE AT LEAST 6" FROM CENTERLINE OF TRIM.

| PARTS LIST | | |
|------------|-----|-------------------------------------|
| ITEM | QTY | DESCRIPTION |
| 1 | 2 | ADAPTER PLATE |
| 2 | 4 | TORSION SPRING |
| 3 | 1 | LATCH |
| 4 | 4 | 12-24 X 3/8" FHMS |
| 5 | 4 | 12-24 NUT W/ NYLON WASHER |
| 6 | 2 | COVER |
| 7 | 2 | HANDLE |
| 8 | 2 | ADJUSTABLE ADAPTER PLATE |
| 9 | 2 | CAM HOLDER |
| 10 | 2 | CAM |
| 11 | 2 | BASE, WIDE HANDLE, LOW PROFILE |
| 12 | 2 | HANDLE, PUSH/PULL, LP BACKSET |
| 13 | 4 | 12-24 X 1/2" FHMS |
| 14 | 4 | 12-24 x 2-3/8" PH. TRUSS HD. M.S. |
| 15 | 8 | 8-32 X 3/8" FHMS |
| 16 | 2 | #8 x 3/4" FHWS OR #8-32 X 3/8" FHMS |
| 17 | 4 | 10-32 X 1/2" PFHMS |
| 18 | 4 | 8-32 X 3/8" OVAL HEAD M.S. |

ALL PREP MOUNTING HOLES TO BE STRAIGHT & PARALLEL TO ONE ANOTHER. THIS WILL HELP PREVENT ANY BINDING OF MECHANICAL PARTS.



INSTALLATION INSTRUCTIONS:

Base assemblies come pre-assembled - above drawing shows blown up view for reference.

1. Prep door according to LR6000Q Series latch template.
2. Install latch using either #8 wood screws or 8-32 machine screws (Item 16).
3. Unscrew the (4) 10-32 screws (Item 14) that are fastened with Keps Nuts (Item 5) on the pre-assembled pull side trim and set aside. Locate and install pull base assembly on pull side of door with **SHORT SIDE** toward the lock edge of the door as shown above.
4. Install the push base assembly onto the push side of the door by inserting the (4) 10-32 screws (Item 14) thru the pull base assembly. Fasten with the Keps Nuts (Item 5) on the push side of the door.
5. Install the push handle assembly (Item 7) to the base assembly installed on push side of door using (2) phillips head cap screws (Item 13). Install (2) stop screws (Item 4) through the push base assembly on each side. Test push handle for proper operation to be sure stop screws were installed in the appropriate base assembly holes.
6. Place covers (Item 6) over handles and fasten each cover with (2) 8-32 screws (Item 18).

PATENT PENDING

LR6000Q-1-05.DWG

ABH® www.abhmfg.com
E-mail: abhinfo@abhmfg.com
Architectural Builders Hardware Mfg., Inc.
1222 Ardmore Ave., Itasca, IL 60143
630.875.9900; FAX 800.9FAXABH (932.9224)

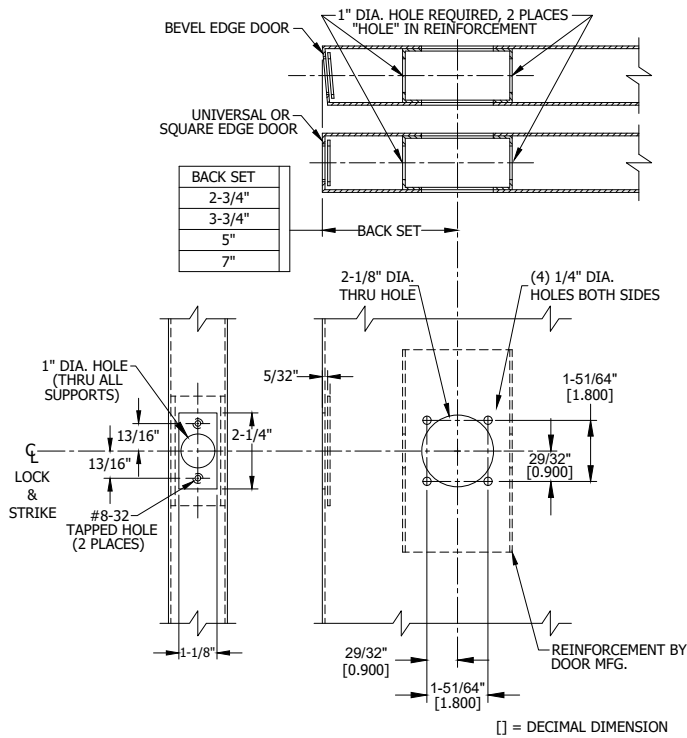
LR6000Q

PAGE 1 OF 4

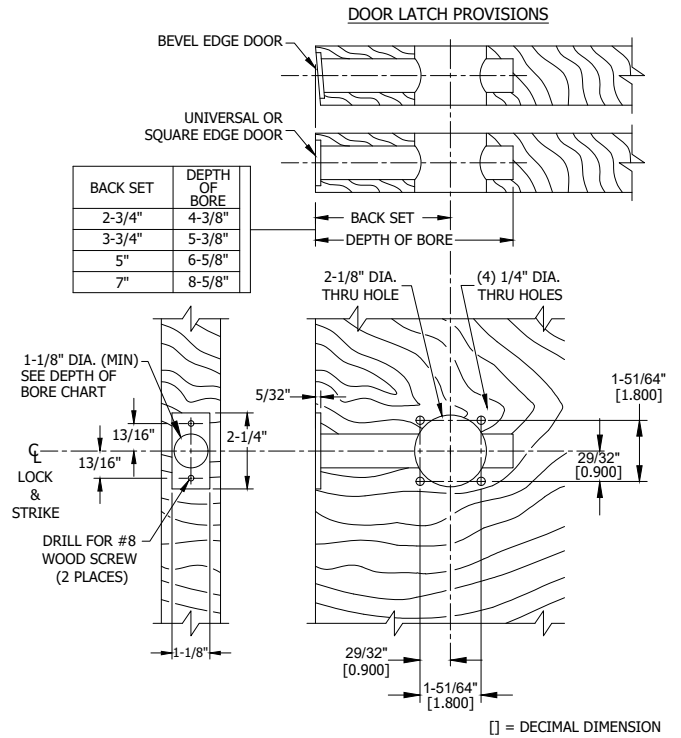
© 2021 ABH Mfg., Inc.
printed in USA

REVISED 12-17-21

LR6000Q PUSH/PULL LATCH - DOOR PREP



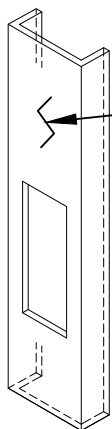
METAL DOOR



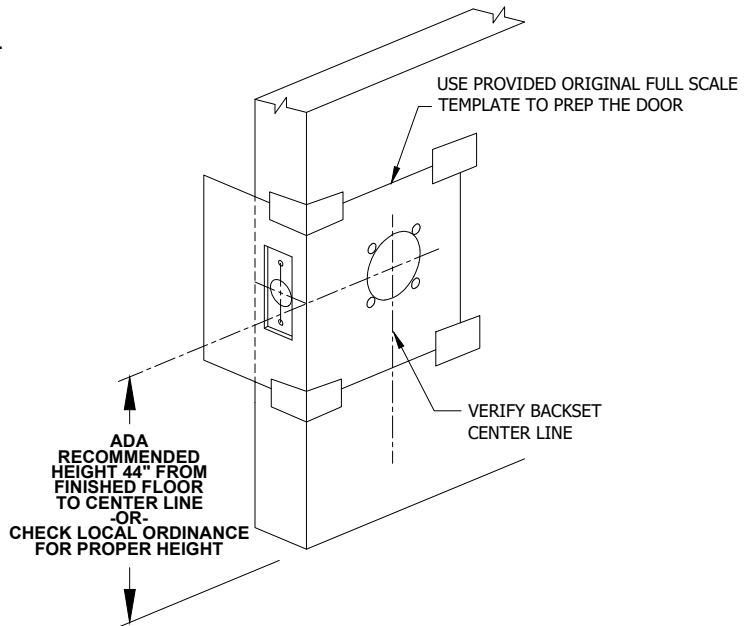
WOOD DOOR

DOOR PREP INFORMATION:

1. BACKSET DIMENSION FROM LOW EDGE OF BEVEL.
2. CENTER PUNCH ALL HOLES.
3. DRILL HOLES (FOR HOLLOW METAL DOORS, DO NOT DRILL THRU. CENTER PUNCH & DRILL HOLES FROM BOTH SIDES OF DOOR).



EDGE GUARD NOTE:
WHEN PREPING THE DOOR FOR THE BACKSET, DETERMINE IF THE DOOR WILL RECEIVE AN EDGE GUARD, IF SO, THE EDGE GUARD SHOULD BE INSTALLED FIRST AND THEN THE PREP FOR THE LATCH BACKSET SHOULD BE MEASURED FROM THE OUTSIDE EDGE OF THE EDGE GUARD.



LR6000Q-2-05.DWG

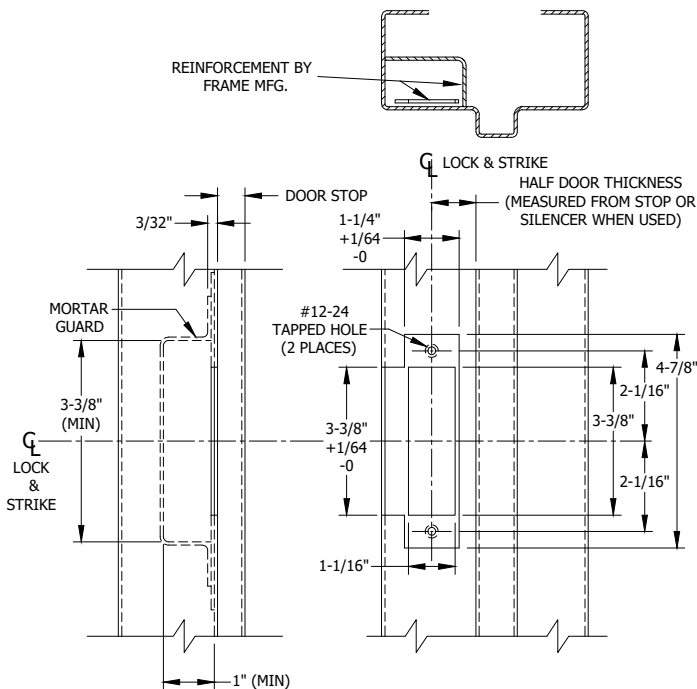
ABH
MANUFACTURING INC.

www.abhmfg.com
E-mail: abhinfo@abhmfg.com
Architectural Builders Hardware Mfg., Inc.
1222 Ardmore Ave., Itasca, IL 60143
630.875.9900; FAX 800.9FAXABH (932.9224)

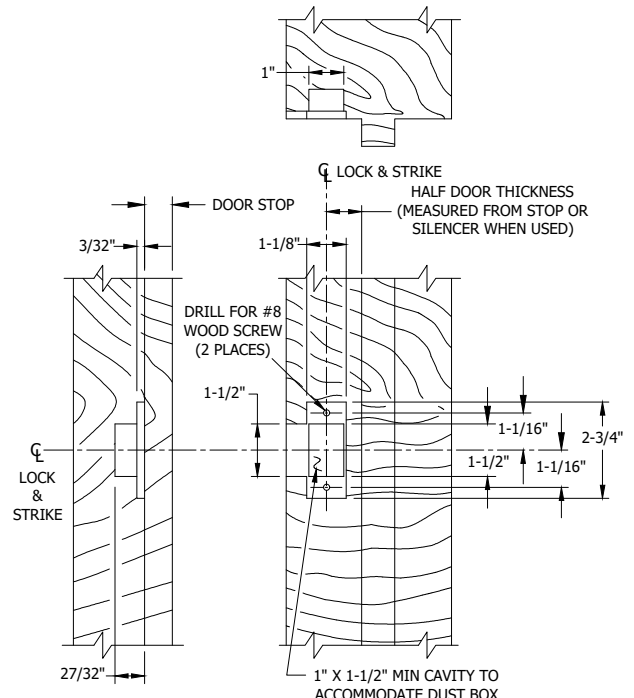
©2018 ABH Mfg., Inc.
printed in USA

LR6000Q
PAGE 2 OF 4
REVISED 12-17-21

LR6000Q PUSH/PULL LATCH - FRAME PREP



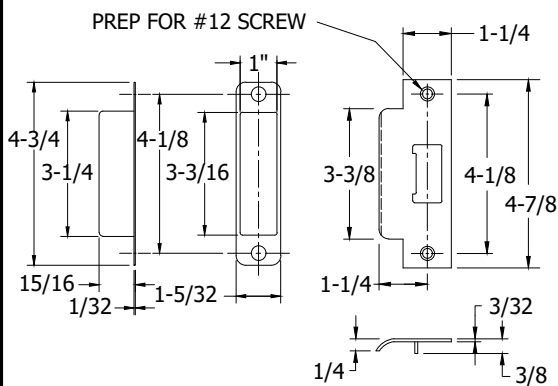
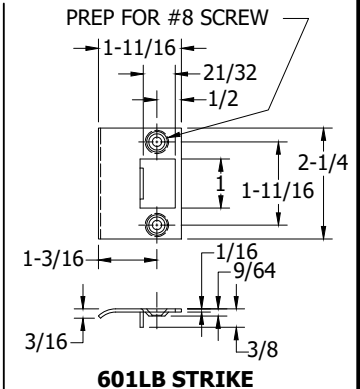
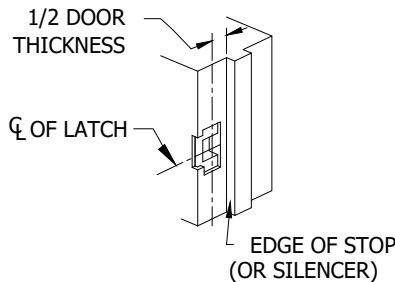
METAL FRAME
(ASA STRIKE SHOWN FOR EXAMPLE)



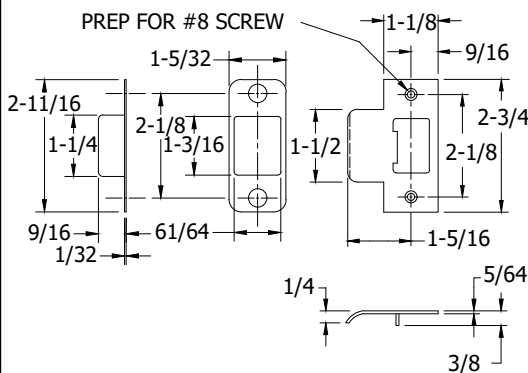
WOOD FRAME
(**"T"** STRIKE SHOWN FOR EXAMPLE)

FRAME PREP

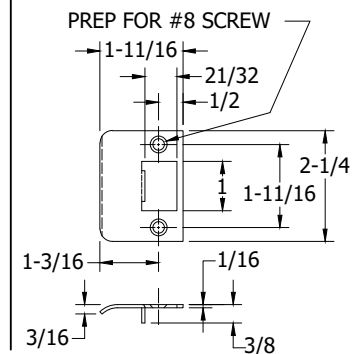
1. Mark centerline of latch bolt on frame.
2. Center strike and mark screw positions.
3. Mortise to required strike and box depth.
4. All dimensions in inches.



ASA STRIKE & DUST BOX



"T" STRIKE & DUST BOX



"D" STRIKE

LR6000Q-3-05.DWG



www.abhmf.com
E-mail: abhinfo@abhmf.com
Architectural Builders Hardware Mfg., Inc.
1222 Ardmore Ave., Itasca, IL 60143
630.875.9900; FAX 800.9FAXABH (932.9224)

© 2018 ABH Mfg., Inc.
printed in USA

LR6000Q

PAGE 3 OF 4

REVISED 12-17-21

LR6000Q PUSH/PULL LATCH - HANDING CHANGE

REFERENCE PAGE 1 FOR PARTS LIST & EXPLODED VIEW

PULL SIDE HANDLE

1. Remove cover (Item 6) by unscrewing the (2) 8-32x3/8" (Item 15) screws.
2. Unscrew the 12-24 x 3/8" screws (Item 4) from each side of the base (Item 11).
(Note its location on the handle/base assembly)
4. Remove 12-24 x 1/2" phillips head cap screw (Item 13) from one side of the handle (Item 7).
5. Remove the (2) 10-32x1/2" Phillips flat head screws (item 17) from the adjustable adapter plate (Item 8).
(Note the springs (location on the handle).
6. Remove the (4) 8-32x3/8" Phillips flat head screws (Item 15) that hold the LP bracket (Item 12) to the adjustable adapter plate (item 8) see Fig. A.
7. Slide the LP Backset (Item 12) over to the other side of the adjustable adapter plate (item 8) and reassemble with the same screws see Fig. B.
(Keep the LP Backset orientation the same)
8. Repeat the same process 1 thru 6 for the PUSH SIDE HANDLE.
9. Remove the (4) 10-32x2-1/2" RHMS (Item 14) that hold base assembly/adapter plate (Item 11&1) to the door.
(Note the orientation of the base assembly on the door this will go back on the same way it came off see Fig. C)
10. Remove the (2) #8 screws (Item 16) that hold the latchbolt (Item 3).
11. Rotate the latchbolt (item 3) 180° and return the (2) #8 screws (item 16). (Flip the handles & base assemblies to there perspective sides, keeping the SHORT SIDE of both PULL & PUSH base assemblies toward LATCH EDGE of the door, see Fig. C).
12. Reinstall the (4) 10-32x2-1/2" RHMS (item 14) that hold base/adapter assemblies (Item 11&1) to the door.
13. Reinstall the Pull Handle (item 8) using the phillips head cap screw (Item 13) that was removed.
(Make sure both springs are pointing in the proper direction on the base assembly).
14. Reinstall the 12-24 x 3/8" screws (Item 4) in its proper location on the base assembly (Item 11).
15. Reinstall the Push Handle (item 8) using the phillips head cap screw (item 13) that was removed.
(Make sure both springs are pointing in the proper direction on the base assembly).
16. Reinstall the 12-24 x 3/8" screws (Item 4) in its proper location on the base assembly (Item 11).
17. Reinstall cover (Item 6) by using the (2) 8-32x3/8" (Item 16) screws.

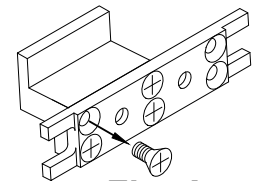
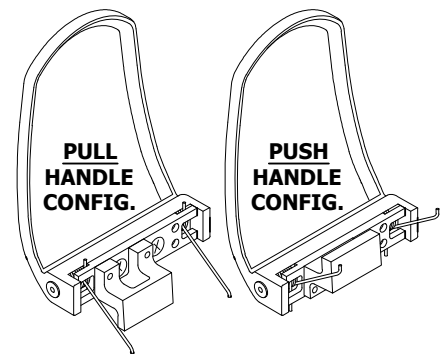


Fig. A

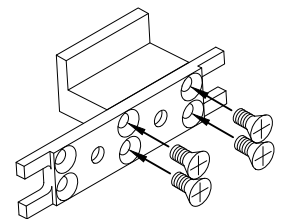
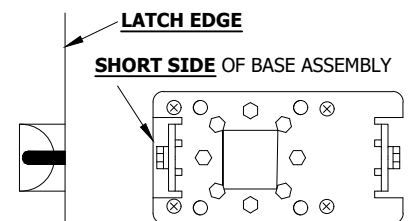


Fig. B



NOTE:
SHORT SIDE OF BOTH PUSH & PULL BASE ASSEMBLIES MUST BE INSTALLED AS SHOWN, (**SHORT SIDE TOWARD LATCH EDGE**).

Fig. C

ABH
MANUFACTURING INC.

® www.abhmfg.com
E-mail: abhinfo@abhmfg.com
Architectural Builders Hardware Mfg., Inc.
1222 Ardmore Ave., Itasca, IL 60143
630.875.9900; FAX 800.9FAXABH (932.9224)

© 2021 ABH Mfg., Inc.
printed in USA

LR6000Q-4-05.DWG

LR6000Q

PAGE 4 OF 4

REVISED 12-17-21