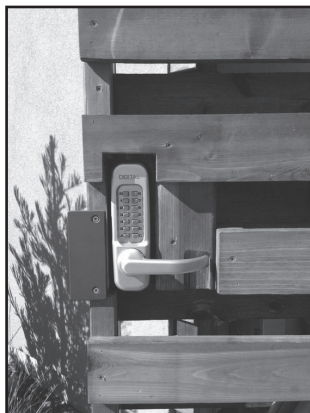


LOCKEY **USA**

Celebrating
30 *years*



GATE & PANIC HARDWARE

vol. 1902

GATE CLOSERS

Please note: LockeyUSA product warranty requires a gate stop to be installed in conjunction with the gate closer to prevent gates from opening past the listed maximum opening angle. www.LockeyUSA.com/warranty

TB100

www.LockeyUSA.com/product/TB100



Gently closes gates up to 125 lbs.
Pushes gate closed
Adjustable closing speed

Recommended for use with:
Metal/Vinyl/Wood/Chain Link gates with in-line/flush hinges.

| |
|----------|
| Order #: |
| TB100 |

Max. Gate Weight: 125 lbs.
Max. Gate Width: 54"
Max. Opening Angle: 90 degrees
Material: Steel

TB175

www.LockeyUSA.com/product/TB175



Flush mount gate closer
Pushes the gate closed
Hold open feature
Adjustable closing/latching speed

Recommended for use with:
Metal, Vinyl, and Wood gates with in-line hinges.



| Order #: | Color: |
|----------|--------|
| TB175B | Black |
| TB175W | White |

Max. Gate Weight: 125 lbs.
Max. Gate Width: 54"
Max. Opening Angle: 90 degrees
Material: Steel

TB200, TB400, TB600

TB200
TB400
TB600



TB200SS
TB400SS
TB600SS



www.LockeyUSA.com/product/TB200
www.LockeyUSA.com/product/TB400
www.LockeyUSA.com/product/TB600

Mounting Hardware



| Order #: | Material: | Color: | Gate Weight: | Gate Width: | Opening Pressure: |
|----------|-----------------|--------|--------------|-------------|-------------------|
| TB200 | EG Steel | Black | 50-125 lbs. | 30"-52" | 3-7 lbs. |
| TB200SS | Stainless Steel | Silver | 50-125 lbs. | 30"-52" | 3-7 lbs. |
| TB400 | EG Steel | Black | 75-175 lbs. | 40"-64" | 6-12 lbs. |
| TB400SS | Stainless Steel | Silver | 75-175 lbs. | 40"-64" | 6-12 lbs. |
| TB600 | EG Steel | Black | 150-250 lbs. | 44"-72" | 8-18 lbs. |
| TB600SS | Stainless Steel | Silver | 150-250 lbs. | 44"-72" | 8-18 lbs. |

Hydraulic controlled closing speed
Installs on top/middle/bottom
Works with left and right hand gates
Mounts on opening side of gate
Pushes the gate closed
Mounting brackets and fitting bar included
Hinge Arrangements: In-line or Offset
Max. Opening Angle: 100 degrees

TB250, TB450, TB650 Adjustable

www.LockeyUSA.com/product/TB250
www.LockeyUSA.com/product/TB450
www.LockeyUSA.com/product/TB650



Adjustable Closing Speed!

Mounting Hardware



| Order #: | Specify Color: | Gate Weight: | Gate Width: | Opening Pressure: |
|----------------------------|------------------------|--------------|-------------|-------------------|
| TB250B TB250W TB250G | Black White Gray | 50-125 lbs. | 30"-52" | 3-7 lbs. |
| TB450B TB450W TB450G | Black White Gray | 75-175 lbs. | 40"-64" | 6-12 lbs. |
| TB650B TB650W TB650G | Black White Gray | 150-250 lbs. | 44"-72" | 8-18 lbs. |

Adjustable hydraulic controlled closing speed
Installs on top/middle/bottom
Works with left and right hand gates
Mounts on opening side of gate
Pushes the gate closed
Mounting brackets and fitting bar included
Hinge Arrangements: In-line or Offset
Max. Opening Angle: 100 degrees
Material: Electro-galvanized (EG) Steel
Finish: PVC wrapped

TB950 Magnum Closer & Hinge

www.LockeyUSA.com/product/TB950



All-in-one closer and hinge system
Concealed, high use, pedestrian gate closer
Self-closing, no hold open
Tamper and vandal resistant
Two speed adjustments: closing & latching
Closes gates weighing between 50-250 lbs.
Restrictor to avoid over opening
Speed adjustments hidden from view
180 degree capable (saloon style) with 180 Drive Plate*

Accessories

Order #: TB-LINX
To mount closer on chain link
(TB200,400,600 & TB250,450,650)

Order #: TB950-LINX
To mount TB950 on chain link

Order #: TB950-180 Plate
To make the TB950 180 degree capable (saloon style)

GATE LOCKS & BOXES

LockeyUSA recommends installing a hydraulic gate closer along with the gate lock and gate stop in order to prevent the gate from slamming and to increase the lifetime of the latch.

SUMO GL2 Gate Lock

www.LockeyUSA.com/product/SUMO

SUMO
SURFACE MOUNT
SECURITY GATE LOCK



Easy to install surface mount gate kit, lock included
Locks automatically
Equipped with passage function
Keyed cylinder lockout function prevents code use when locked
Deadlocking spring latch prevents tampering
Adjustable strike accommodates gaps between gate & post up to 2"
One user code, thousands of possible combinations
Changeable handing
Ideal for ornamental, aluminum, vinyl, and wood gates

Dimensions on gate post:
Length: 9 5/16"
Width: 2 1/2"
Depth: 4"

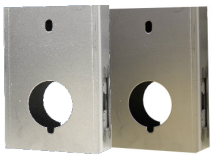
Dimensions on fence post:
Length: 8 5/8"
Width: 1 1/2"
Depth: 2 1/4"

NO WELDING NEEDED!

| Order #: | Lock Body: | Finish: |
|-----------|--------------------|---------|
| GL2SCMG | Single Combination | SCMG* |
| GL2JBMG | Single Combination | JBMG* |
| GL2SCMGDC | Double Combination | SCMG* |
| GL2JBMGDC | Double Combination | JBMG* |

Gate Boxes & Gate Box Kits

www.LockeyUSA.com/gate-boxes



GB200M
For use with M210, M230
Steel: GB200M
Aluminum: GB200MAL



GB210
For use with M210 + knob/lever
Steel: GB210
Aluminum: GB210AL



GB900
For use with 2930, 2985
Steel (black): GB900
Aluminum: GB900AL



GB950
For use with 2900, 2950
Steel (black): GB950
Aluminum: GB950AL



GB1150
For use with 1150, 1600
Steel: GB1150
Aluminum: GB1150AL



GB2500
For use with 2210, 2830,
2835, 3210, 3830, 3835
Steel: GB2500
Aluminum: GB2500AL



GBADDABOLT (box only)
For use with M210DC & a
drive-in-deadbolt
Designed for narrow stiles
Black: GB-ADD-A-BOLT-B
White: GB-ADD-A-BOLT-W

NO
WELDING
NEEDED!



GB2900-LINX
For use with 2900 Series
2900, 2930, 2950, 2985
Stainless Steel for Chain Link
1 5/8": GB2900-LINX
1 7/8": GB2900-LINX 1 7/8"



GBADDABOLT KIT
Includes GBADDABOLT box,
M210DC & drive-in-deadbolt
Designed for narrow stiles
Black: GBADDABOLTKITB
White: GBADDABOLTKITW



GB210PLUSDC Kit
Includes GB210 box, M210DC
& a knob or lever
Specify knob or lever
Steel: GB210PLUSDC
Aluminum: GB210PLUSDCAL

Keyless Locks for Gates

For our full selection of LockeyUSA locks, visit www.LockeyUSA.com.



2835 Lever Lock
Shown above on GB2500
Available in 9 finishes:
AB, BB, BC, JB, MG* (above),
OIL, SC, SN, WH



M210 Deadbolt & M230 Lock
Shown above on GB200M
Available in 9 finishes:
AB, BB, BC, JB, MG* (above),
OIL, SC, SN, WH



3835 Passage Lever Lock
Shown above on GB2500
Available in 4 finishes:
JBMG*, OIL, SCMG*, SN



2900 Series Locks
Shown above on GB2900 LINX
Available in 9 finishes:
AB, BB, BC, JB, MG* (above),
OIL, SC, SN, WH (2930 not pictured)



1150 Heavy-Duty Lever Lock
Shown above on GB1150
Available in 3 finishes:
JB, MG*, OIL

AB: Antique Brass BB: Bright Brass BC: Bright Chrome JB: Jet Black *MG: Marine Grade OIL: Oil Rubbed Bronze SC: Satin Chrome SN: Satin Nickel WH: White
* MG in the finish indicates Marine Grade, which extends the life of the finish when exposed to corrosive elements of saltwater environments. *

PANIC BARS & TRIMS

www.LockeyUSA.com/panic-bars

www.LockeyUSA.com/panic-trims

PB1100 Panic Bar

www.LockeyUSA.com/product/PB1100



Grade 1 Certified ANSI/BHMA A156.3 Series
Complies with ANSI A117.a ADA requirements
UL/cUL Listed
Weather Resistant
Latch Bolt: Stainless Steel Powder Metallurgy, 11/16" throw
Deadlocking Latch: Stainless Steel Powder Metallurgy, 9/16" throw
Narrow Stile: 2 1/2"
Door Thickness: 1 3/4" (standard)
PB1100 Device Length: 33" for 36" doors
PB1142 Device Length: 42" for 48" doors
Field-sizable: Can be cut down to 27"
PB1100FR only: UL/cUL Listed 3 hour fire-rated 10C, UBC 7-2 (1997)
Compatible with all LockeyUSA Panic Trims & Keyless Panic Trims

| Order #: | Material: | Length: |
|----------|-----------------|---------|
| PB1100AL | Aluminum | 33" |
| PB1142 | Aluminum | 42" |
| PB1100FR | Fire Rated | 33" |
| PB1100SS | Stainless Steel | 33" |
| PB1142SS | Stainless Steel | 42" |

PB2500 Panic Bar

www.LockeyUSA.com/product/PB2500



Patented double-interlocking system makes the PB2500 virtually impossible to tamper with, pry, or force open
UL Certified ANSI/BHMA 156.3 2008, Grade 1
Listed by CA State Fire Marshall
ADA Compliant
Conforms to Positive Pressure Standards, UL 10C UBC 7-2
Accepted by NYC, Department of Buildings, MEA 337-92M
Standard lengths for 36" or 48" doors/gates
Can be field cut for undersized doors/gates
Designed for narrow stile aluminum doors
Made in the USA
Weather Resistant
Non-handed

| Order #: | Device Type: | Length: |
|-------------|--------------|---------|
| PB2500 | Panic Bar | 33" |
| PB2500Alarm | Alarm Bar | 33" |
| PB2542 | Panic Bar | 42" |
| PB2542Alarm | Alarm Bar | 42" |



DETEX V40 Series Panic Bars

www.LockeyUSA.com/product/DETEX-V40



Features:
ANSI and BHMA Grade 1 Certified
UL/cUL Listed
ADA Compliant
Narrow Stile: 2 1/2"
Door Thickness: 1 3/4" (standard)
Field-sizable
Weatherproof

LockeyUSA offers DETEX products & manufactures DETEX compatible panic shields & keyless trims. V40 Series bars are also offered as part of our Panic Shield Kits.

Non-Alarm Options:

33" Bar: V40
33" Bar, Black: V40x711
33" Bar, Weatherized: V40xW
42" Bar: V40x48
42" Bar, Black: V40x48x711

Alarm Options:

33" Alarm Bar: V40xEB
33" Alarm Bar, Black: V40x711xEB
33" Alarm Bar, Weatherized: V40xEBxW
33" Alarm Bar, Black, Weatherized: V40x711xEBxW
42" Alarm Bar: V40x48xEB
42" Alarm Bar, Weatherized: V40x48xEBxW
42" Alarm Bar, Black: V40x48x711xEB
42" Alarm Bar, Black Weatherized: V40x48x711xEBxW

Keyless Panic Trims

www.LockeyUSA.com/product/115P
www.LockeyUSA.com/product/160P

www.LockeyUSA.com/product/285P
www.LockeyUSA.com/product/310P



115P Heavy-Duty Lever Lock (1150 Lock Body)

Compatible with panic bars that accept a flat tail piece & have a turn radius of 74° or less.

| Finish: | Order #: |
|---------|----------|
| JB | 115PJB |
| MG* | 115PMG* |
| OIL | 115POIL |



160P Heavy-Duty Knob Lock (1600 Lock Body)

Compatible with panic bars that accept a flat tail piece & have a turn radius of 90° or less.

| Finish: | Order #: |
|---------|----------|
| JB | 160PJB |
| MG* | 160PMG* |
| OIL | 160POIL |



285P Lever Lock (2835 Lock Body)

Compatible with panic bars that accept a flat tail piece & have a turn radius of 74° or less.

Available in 9 finishes:

| | |
|-----|---------|
| AB | 285PAB |
| BB | 285PBB |
| BC | 285PBC |
| JB | 285PJB |
| MG* | 285PMG* |
| OIL | 285POIL |
| SC | 285PSC |
| SN | 285PSN |
| WH | 285PWH |



310P Knob Lock (3210 Lock Body)

Compatible with panic bars that accept a flat tail piece & have a turn radius of 90° or less.

| Finish: | Order #: |
|---------|----------|
| MG* | 310PMG* |

Compatible trim boxes for LockeyUSA keyless panic trims are listed on the "Panic Hardware" page of this catalog.

Panic Trims

Pull Handle Entry Trim



Order #:
PB-DUMED

Lever Handle Passage Trim



Order #:
PB-LHPS

Lever Handle Clutch Trim



Order #:
PB-LHCL

Lever Handle Keyed Entry



Order #:
PB-LHED

Lever Handle Storeroom



Order #:
PB-LHSR

Night Latch Handleset Trim



Order #:
PB-NLED

Thumbpiece Keyed Entry Trim



Order #:
PB-TPED

PANIC HARDWARE

LockeyUSA panic hardware (excluding 12" panic shields) is available individually or as a component of a Panic Shield Kit. See next page for more information.

Panic Shields

www.LockeyUSA.com/panic-shields



PS24S

PS3x1S24

ED3x1S24

PS12S

PS3x1S12

ED3x1S12

| Order #: | Style: | Shield Height: | Color: | Hole Pattern: |
|----------|----------|----------------|--------|---|
| PS3x1S24 | Standard | 24" | Silver | Predrilled for PB1100, PB2500 & V40 Series Panic Bars |
| PS3x1B24 | Standard | 24" | Black | Predrilled for PB1100, PB2500 & V40 Series Panic Bars |
| ED3x1S24 | Edge | 24" | Silver | Predrilled for PB1100, PB2500 & V40 Series Panic Bars |
| ED3x1B24 | Edge | 24" | Black | Predrilled for PB1100, PB2500 & V40 Series Panic Bars |
| PS3x1S12 | Standard | 12" | Silver | Predrilled for PB1100, PB2500 & V40 Series Panic Bars |
| PS3x1B12 | Standard | 12" | Black | Predrilled for PB1100, PB2500 & V40 Series Panic Bars |
| ED3x1S12 | Edge | 12" | Silver | Predrilled for PB1100, PB2500 & V40 Series Panic Bars |
| ED3x1B12 | Edge | 12" | Black | Predrilled for PB1100, PB2500 & V40 Series Panic Bars |
| PS24S | Standard | 24" | Silver | No panic bar mounting holes |
| PS24B | Standard | 24" | Black | No panic bar mounting holes |
| PS12S | Standard | 12" | Silver | No panic bar mounting holes |
| PS12B | Standard | 12" | Black | No panic bar mounting holes |

Mounting plate for a panic bar
Turns gates into emergency exits
16ga eg-steel
Adjustable for 28"-54" gates
Available in 24" and 12" shield heights
Powder-coated finish



PS-EXT
Extension shields
Extends panic shield to 74"
Available in both 12" and 24"

| Order #: | Shield Height: | Color: |
|----------|----------------|--------|
| PSEXTS | 24" | Silver |
| PSEXTB | 24" | Black |
| PSEXT12S | 12" | Silver |
| PSEXT12B | 12" | Black |

Gate Hardware

www.LockeyUSA.com/gate-hardware

Latch Protector

Provides extra security to gate latches, for gates with over 1" gap
16ga eg-steel
23.375" long
Black: LPB
Silver: LPS



Max Guard

Mounts above panic bar to prevent tampering
4" Protrusion, 24" wide
Black: MAXB
Silver: MAXS



Gate Stop

Prevents gate from opening past 90°
Gate Stop: GS90



LINX Gate Stop

Prevents chain link gate from opening past 90°
3" Posts: GSLINX
4" Posts: GSLINX 4"



Edge Jamb Stop

Acts as a gate stop on EDGE shield setups
Order #: EDJS



PS Strike Bracket

For standard style shield setups, includes mounting hardware
Black: PSSBB
Silver: PSSBS



ED Strike Bracket

For edge style shield setups, includes mounting hardware
Black: EDSBB
Silver: EDSBS



2900 Strike Bracket

Strike Bracket for 2900/2950 locks
Includes necessary mounting hardware
Silver: SB2900



2985 Strike Bracket

Strike Bracket for 2930/2985 locks
Includes necessary mounting hardware
Silver: SB2985



Keyed Cylinder

For use with: PSGB5 and EDGB5
Order #: PS-CYL
Specify Keyed Alike or Keyed Different



Mounting Tabs

For use with: 2900 Series Locks
Order #: AR-2991-0965

Trim Boxes

www.LockeyUSA.com/panic-hardware



PSGB100

For use with 115P, 160P
Black: PSGB100B
Silver: PSGB100S



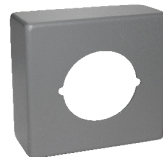
PSGB200 (STANDARD)

For use with 285P
Black: PSGB200B
Silver: PSGB200S



EDGB200 (EDGE)

For use with 285P
Black: EDGB200B
Silver: EDGB200S



PSGBLH

For use with PB-LHPS, PB-LHED, PB-LHSR
Black: PSGBLHB
Silver: PSGBLHS



PSGB5

For use with keyed cylinder for standard shield setups
Black: PSGB5B
Silver: PSGB5S



EDGB5

For use with keyed cylinder for EDGE shield setups
Black: EDGB5B
Silver: EDGB5S

PANIC SHIELD KITS

LockeyUSA 24" panic shields are available individually or as a component of a Panic Shield Kit. Information on how to order a panic shield kit is found below.

Standard vs. EDGE Style Kits

www.LockeyUSA.com/standard-kits

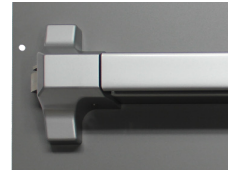
www.LockeyUSA.com/edge-kits

Panic Shield Kits are offered in two styles, Standard and EDGE

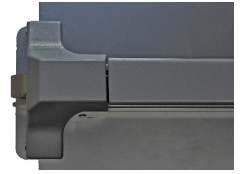
The main differences between Standard and EDGE panic shield kits:

- ✓ Panic bar mounts closer to the edge of the gate with EDGE kits
- ✓ Reduced strike size on EDGE kits when compared to Standard kits
- ✓ Reduced strike protrusion on EDGE kits when compared to Standard kits
- ✓ Latch Protector & Jamb Stop (gate stop) included with all EDGE kits

Standard



EDGE



Standard Style



PB1100 mounted on a Standard Style Panic Shield setup

EDGE Style



PB2500 mounted on an EDGE Style Panic Shield setup

How to Order a Panic Shield Kit

www.LockeyUSA.com/resources/ordering-information

KIT

- 4: Value
- 5: Safety
- 6: Security

SHIELD COLOR

- S: Silver
- B: Black

*OPTIONAL PANIC BAR UPGRADE SELECT ONLY ONE:



STYLE

- PS: Standard Style
- ED: EDGE Style



BAR

- 0: No Bar
- 1: PB1100
- 2: Detex V-40
- 3: Detex V-40xEBxW (WEATHERIZED ALARM)
- 4: PB2500
- 5: PB2500ALARM

For standard 36" doors/gates
Material: Aluminum



PB1100 UPGRADES

- L: 42" Bar
- M: Stainless Steel
- F: Fire Rated
- LM: 42" Stainless Bar

DETEX V-40 UPGRADES

- L: 42" Bar
- W: Weatherized V-40
- 7: Black V-40
- L7: 42" Black V-40

DETEX V-40xEBxW UPGRADES

- L: 42" Bar
- 7: Black V-40xEB
- L7: 42" Black V-40xEB

PB2500 & PB2500AL UPGRADES

- L: 42" Bar

WHAT'S INCLUDED?

- (4) Value Kit: Shield, Bar, Strike Bracket
- (5) Safety Kit: Shield, Bar, Strike Bracket, Key Box, Keyed Cylinder
- (6) Security Kit: Shield, Bar, Strike Bracket, Gate Box, 285-P, Max Guard

ALL EDGE STYLE KITS ALSO INCLUDE LATCH PROTECTOR & JAMB STOP

PANIC SHIELD KITS

Refer to the "Panic Hardware" page of this catalog to view the individual items included in the various Panic Shield Kits.

Panic Shield Kits

www.LockeyUSA.com/standard-kits

www.LockeyUSA.com/edge-kits

Contents of kits are indicated by **x** below. See "How to Order Panic Shield Kit" for available panic bar upgrades.

| Order #: | Value Safety Security | Style: | 24" Shield | PB1100 | V40 | V40x-EBxW | PB2500 | PB2500 Alarm | Strike Bracket | Key Box | Keyed Cylinder | Keyless Lock Trim Box | 285P Keyless Trim | Max Guard | LP | Jamb Stop |
|----------|-----------------------|----------|------------|--------|-----|-----------|--------|--------------|----------------|---------|----------------|-----------------------|-------------------|-----------|----|-----------|
| PS40 | Value | Standard | x | | | | | | x | | | | | | | |
| PS41 | Value | Standard | x | x | | | | | x | | | | | | | |
| PS42 | Value | Standard | x | | x | | | | x | | | | | | | |
| PS43 | Value | Standard | x | | | x | | | x | | | | | | | |
| PS44 | Value | Standard | x | | | | x | | x | | | | | | | |
| PS45 | Value | Standard | x | | | | | x | x | | | | | | | |
| PS50 | Safety | Standard | x | | | | | | x | x | x | | | | | |
| PS51 | Safety | Standard | x | x | | | | | x | x | x | | | | | |
| PS52 | Safety | Standard | x | | x | | | | x | x | x | | | | | |
| PS53 | Safety | Standard | x | | | x | | | x | x | x | | | | | |
| PS54 | Safety | Standard | x | | | | x | | x | x | x | | | | | |
| PS55 | Safety | Standard | x | | | | | x | x | x | x | | | | | |
| PS60 | Security | Standard | x | | | | | | x | | | x | x | x | | |
| PS61 | Security | Standard | x | x | | | | | x | | | x | x | x | | |
| PS62 | Security | Standard | x | | x | | | | x | | | x | x | x | | |
| PS63 | Security | Standard | x | | | x | | | x | | | x | x | x | | |
| PS64 | Security | Standard | x | | | | x | | x | | | x | x | x | | |
| PS65 | Security | Standard | x | | | | | x | x | | | x | x | x | | |
| ED40 | Value | EDGE | x | | | | | | x | | | | | | x | x |
| ED41 | Value | EDGE | x | x | | | | | x | | | | | | x | x |
| ED42 | Value | EDGE | x | | x | | | | x | | | | | | x | x |
| ED43 | Value | EDGE | x | | | x | | | x | | | | | | x | x |
| ED44 | Value | EDGE | x | | | | x | | x | | | | | | x | x |
| ED45 | Value | EDGE | x | | | | | x | x | | | | | | x | x |
| ED50 | Safety | EDGE | x | | | | | | x | x | x | | | | x | x |
| ED51 | Safety | EDGE | x | x | | | | | x | x | x | | | | x | x |
| ED52 | Safety | EDGE | x | | x | | | | x | x | x | | | | x | x |
| ED53 | Safety | EDGE | x | | | x | | | x | x | x | | | | x | x |
| ED54 | Safety | EDGE | x | | | | x | | x | x | x | | | | x | x |
| ED55 | Safety | EDGE | x | | | | | x | x | x | x | | | | x | x |
| ED60 | Security | EDGE | x | | | | | | x | | | x | x | x | x | x |
| ED61 | Security | EDGE | x | x | | | | | x | | | x | x | x | x | x |
| ED62 | Security | EDGE | x | | x | | | | x | | | x | x | x | x | x |
| ED63 | Security | EDGE | x | | | x | | | x | | | x | x | x | x | x |
| ED64 | Security | EDGE | x | | | | x | | x | | | x | x | x | x | x |
| ED65 | Security | EDGE | x | | | | | x | x | | | x | x | x | x | x |

WARRANTY STATEMENTS: LockeyUSA Hydraulic Gate Closers (not including the TB950 Magnum) are covered by a one year warranty. The one year warranty covers manufacturer defects to the hydraulic gate closer. The one year warranty does NOT cover defects resulting from vandalism, improper installation or use. LockeyUSA TB950 Magnum Hydraulic Gate Closer & Hinge is covered by a ten year warranty. The ten year warranty covers manufacturer defects to the hydraulic gate closer and hinge. The ten year warranty does not cover defects resulting from vandalism, improper installation, or use. LockeyUSA Panic Hardware including panic bars and panic shields, comes with a five year warranty. The five year warranty does NOT cover damage or defects to the product finish, defects resulting from vandalism, or defects resulting from improper installation or use. LockeyUSA product warranty does not apply to DETEX Panic Hardware, sold by LockeyUSA. All DETEX warranty inquiries must be directed to the manufacturer.

FULL WARRANTY STATEMENTS AVAILABLE AT www.LockeyUSA.com/warranty

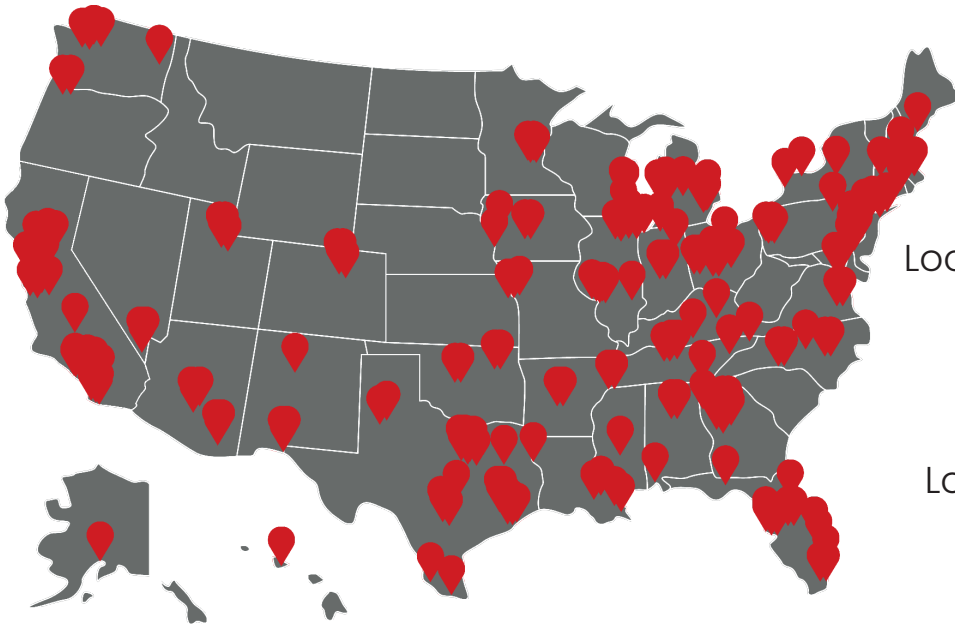


LOCKEYUSA.COM | 888.395.0163 | INFO@LOCKEYUSA.COM



LOCKEY **USA**

Celebrating
30 *years*



FIND A DISTRIBUTOR

LockeyUSA.com/find-a-distributor



FIND AN ONLINE RETAILER

LockeyUSA.com/online-retailers

**4245 S. Lincoln Rd.
Mt. Pleasant, MI 48858
888.395.0163
LockeyUSA.com**