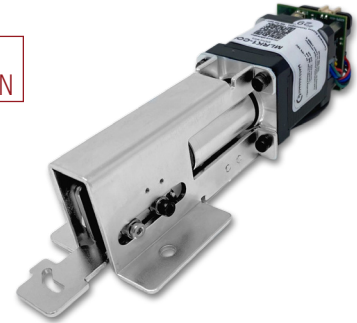


MLRK1-COR

- “PTS” Push to set technology
- Powerfully Built & Easy to Install!
- Fast, quiet, smooth
- True Electronic Dogging - Full push pad retraction
- UL Listed
- Retrofits Corbin Russwin 4/5000 & Yale 7000 series exit devices



The **MLRK1-COR** is a high quality, cost-effective method of converting a **Corbin Russwin 4/5000 & Yale 7000 series** device to an electrified motor-driven latch retraction exit device. All our kits retract not just the latch/latches but the push pad too. Allowing electronically dogged devices to remain in a push/pull state for as long as it is desired. Patent Pending Push to Set (PTS) Technology allows for an easy post-installation adjustment of the latch/latches. Last but not least, it features our motor module with built-in audible diagnostics & equipped with 2 different torque settings from energy-conscious, to High Torque to get the tough jobs done!

SPECIFICATIONS

Voltage:

- Voltage range – 24 to 28 VDC
- System protection – unit shutdown when voltage exceeds 28VDC
- Standard - Average Current Peak: 900mA, Average Current Hold: 215mA
- High Torque - Average Current Peak: 2A, Average Current Hold: 250mA
- PTS adjustment – approx. 1/4”

Wire Run:

- 300’ with 18ga wire

Product Details:

- Weight: 2 Lbs

Device Cutdown Details:

- 36” - 4” from end cap
- 48” - 10” from end cap

FEATURES

- MM4S Smart Module: On board diagnostics with audible feedback for adjustment and power issues
- “PTS”: 5 second electronic adjustment for easy post installation adjustment
- Electric dogging rated for continuous duty - Auto re-engage if push pad is pulled from dogged position
- Low Current Draw - Field switchable to “High Torque” mode
- Up to 300’ wire run with 2-18ga wire - Long wire runs provides installer with convenience of placing the Command locking hardware power supply in a centralized location; i.e. the same closet as the access control panel
- 8’ cable with Quick Connect for MM4S module to easily connect to power supply lead
- Optional Request-to-exit can be added
- 3-year “no hassle” warranty

How to Order

PART #	EASY ORDER #	DESCRIPTION
MLRK1-COR	78952	Kit for Corbin Russwin 4/5000 & Yale 7000 Series. EU 24V
MLRK1-COR REX	78953	Kit for Corbin Russwin 4/5000 & Yale 7000 Series. EU 24V + REX
CYREXKIT-M-ED	72643	Field Installable REX kit for Electrified devices.

MLRK1-COR Matrix

The MLRK1-COR will work in new installations and as a replacement for installations with existing electrifications, matrix lists available options.

Corbin Russwin & Yale Kit	Mechanical Device	CAT Modified Solenoid	CAT Modified Motor	SDC Motor (LR100CRK)	ACSI Motor (1150K-MDC)
COR	✓	✓	✓	✓	✓

Need a Locking Hardware Power Supply? Recommended Power Supplies:

- PS204/PS204B
- PS210
- PS220/220B
- PS440B
- PS480B

