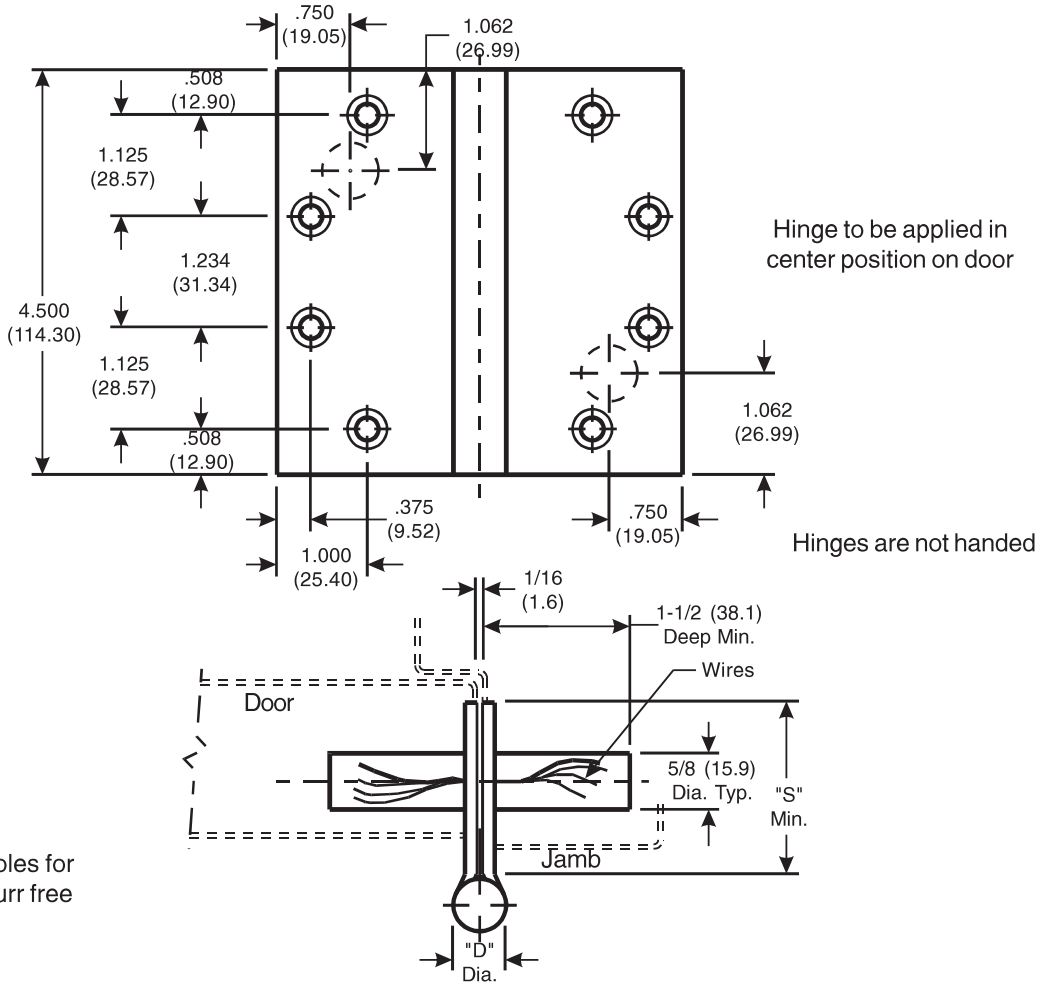


Architectural Door Accessories

McKinney 4 1/2 x 4, 4 1/2 x 4 1/2 Template Full Mortise Concealed Circuit Hinges (6 & 8 Wires)

The global leader in
door opening solutions

DO NOT SCALE
DIMENSIONS: INCHES (MM)



Installation holes for
wires to be burr free

Hinge to be applied in
center position on door

Hinges are not handed

Bottom view (Hinge in closed position)

CATALOG NUMBER		GAUGE OF METAL	"D" OUTSIDE DIAMETER	"S" DISTANCE (SWAGE LINE)	
STEEL HINGES	*NON-FERROUS HINGES			HINGE WIDTH	
				4 (101.6)	4 1/2 (114.3)
TA 2731xCC	TA 3331xCC	.134 (3.140)	.525 (13.33)	1-11/16 (42.9)	1-15/16 (49.2)
TA 3750xCC	TA 3350xCC	.180 (4.57)	.701 (17.80)	**	1-13/16 (46.0)

Template 277-15

Effective date:
September 8, 2015

Supersedes: All Previous

McKINNEY Template Hinges of the Catalog Numbers are made to conform to ANSI/BHMA 156.7 for Screw Hole Location and Gauge of Metal. Wire location and hole size conforms to this drawing.

Machine Screw Size:
1/2 x 12-24 F.H.

Wood Screw Size:
1 1/4 x 12 F.H.

*Check Catalog for Metals.

**Dimensions will be
supplied upon request.

225 Episcopal Road
Berlin CT 060377
P: 800.346.7707 | F: 800.541.1073
www.mckinneyhinge.com | dss-orders@assaabloy.com

McKinney is a brand associated with Corbin Russwin, Inc., an ASSA ABLOY Group company. Copyright © 2017, Corbin Russwin, Inc. All rights reserved. Reproduction in whole or in part without the express written permission of Corbin Russwin, Inc. is prohibited.