

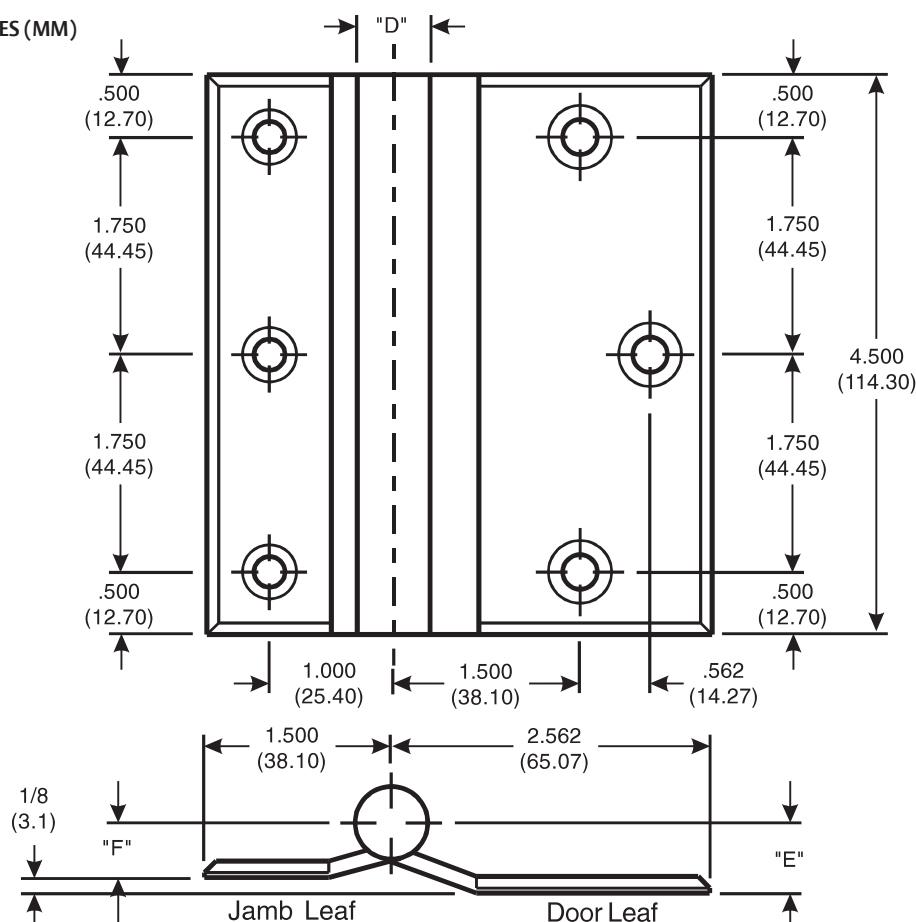
Architectural Door Accessories

ASSA ABLOY

McKinney 4½" Full Surface Template Hinges

The global leader in
door opening solutions

DO NOT SCALE
DIMENSIONS: INCHES (MM)



Template 130-15

Effective date:
September 2, 2015

Supersedes: All Previous

McKINNEY Template Full
Surface Hinges of the
Catalog Numbers are made
to conform to ANSI/BHMA
156.7.

Hospital Type Template
Hinges conform to screw
hole locations shown.

Machine Screw Size:
Jamb Leaf: 1/2 x 12-24 F.H.
Door Leaf: 2 x 1/4-20 O.H.
with Grommet Nut
(Specify door thickness if
greater than 1 3/4)

Hinges are reversible.

*Check Catalog for Metals.

CATALOG NUMBER		GAUGE OF METAL	"D" OUTSIDE DIAMETER	"E" DOOR LEAF OFFSET	"F" JAMB LEAF OFFSET
STEEL HINGES	*NON-FERROUS OR STAINLESS STEEL HINGES				
TA 771	TA 371	.134 (3.40)	.585 (14.86)	9/16 (14.3)	7/16 (11.1)
TA 781	TA 381	.180 (4.57)	.720 (18.29)	5/8 (15.9)	1/2 (12.7)
TA/TB 2771	-	.134 (3.40)	.603 (15.32)	9/16 (14.3)	7/16 (11.1)
T4A/T4B 3781	T4A/T4B 3381	.180 (4.57)	.752 (19.10)	5/8 (15.9)	1/2 (12.7)

225 Episcopal Road
Berlin CT 06037
P: 800.346.7707 | F: 800.541.1073
www.mckinneyhinge.com | dss-orders@assaabloy.com

McKinney is a brand associated with Corbin Russwin, Inc., an ASSA ABLOY Group company. Copyright © 2017, Corbin Russwin, Inc. All rights reserved. Reproduction in whole or in part without the express written permission of Corbin Russwin, Inc. is prohibited.