

# Architectural Door Accessories

## McKinney 4 1/2 x 4, 4 1/2 x 4 1/2 Template Full Mortise, QC\* Hinge (2 to 12 Wires)

The global leader in door opening solutions

DO NOT SCALE  
DIMENSIONS: INCHES (MM)

### Template 278-17

**Effective date:**  
July 27, 2017

**Supersedes:** All Previous

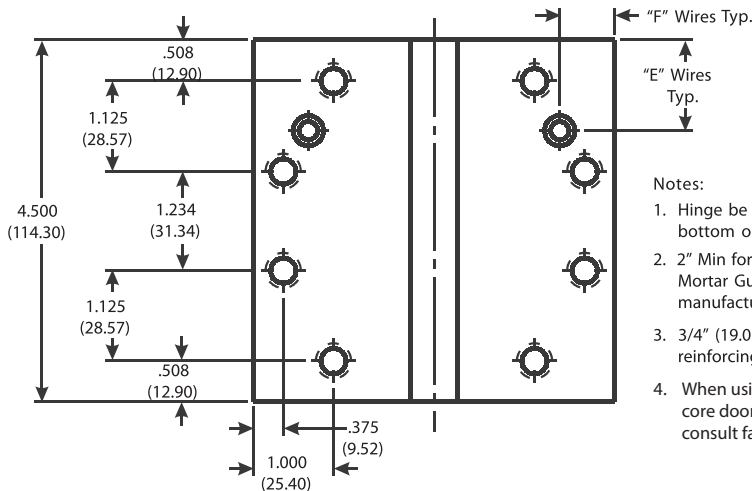
McKINNEY Template Hinges of the Catalog Numbers are made to conform to ANSI/BHMA 156.7 for Screw Hole Location and Gauge of Metal. Wire location and hole size conforms to this drawing.

**Machine Screw Size:**  
1/2 x 12-24 F.H.

**Wood Screw Size:**  
1 1/4 x 12 F.H.

\*Connector System utilizes wire colors & locations compatible with Doors & Hardware from other ASSA ABLOY Group Companies.

\*\*Check Catalog for Metals.



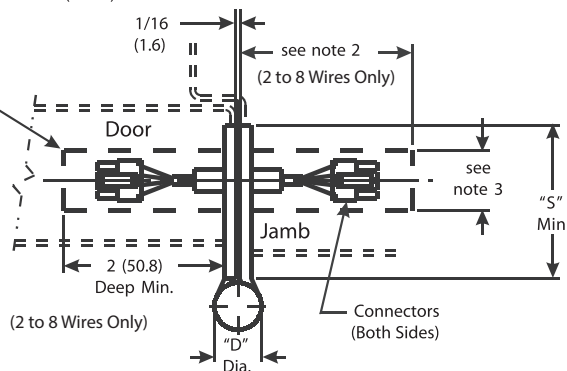
**Notes:**

- Hinge be applied at second position from the bottom on the door.
- 2" Min for wood frames. McKINNEY MG-16 Mortar Guard or an equivalent provided by frame manufacturer required on steel frames.
- 3/4" (19.01) recommended. Opening in hinge reinforcing 3/8" x 5/8" min.
- When using the QC10 or QC12 on a wood or solid core door a pocket is required for wires and connectors consult factory for details.

Back of hinge shown

See NOTE 4 when using the QC10 or QC12 on wood or solid core doors

Installation holes for wires to be burr free



Bottom view (Hinge in closed position)

CATALOG NUMBER		GAUGE OF METAL	"D" OUTSIDE DIAMETER	"E" WIRE LOCATION	"F" WIRE LOCATION	"S" DISTANCE (SWAGE LINE)	
STEEL HINGES	**NON-FERROUS HINGES					HINGE WIDTH	
						4 (101.6)	4 1/2 (114.3)
TA 714xQC	TA 314xQC	.134 (3.40)	.585 (14.86)	1.125 (28.57)	.812 (20.64)	1-21/32 (42.1)	1-29/32 (48.4)
TA 786xQC	TA 386xQC	.180 (4.57)	.720 (18.29)	1.125 (28.57)	.812 (20.64)	1-9/16 (39.7)	1-13/16 (46.0)
TA/TB 2714xQC	TA/TB 2314xQC	.134 (3.40)	.585 (14.86)	1.125 (28.57)	.688 (17.47)	1-21/32 (42.1)	1-29/32 (48.4)
T4A/T4B 3786xQC	T4A/T4B 3386xQC	.180 (4.57)	.752 (19.10)	1.062 (26.98)	.750 (19.05)	1-9/16 (39.7)	1-13/16 (46.0)

225 Episcopal Road  
Berlin CT 060377  
P: 800.346.7707 | F: 800.541.1073  
www.mckinneyhinge.com | dss-orders@assaabloy.com

McKinney is a brand associated with Corbin Russwin, Inc., an ASSA ABLOY Group company. Copyright © 2017, Corbin Russwin, Inc. All rights reserved. Reproduction in whole or in part without the express written permission of Corbin Russwin, Inc. is prohibited.