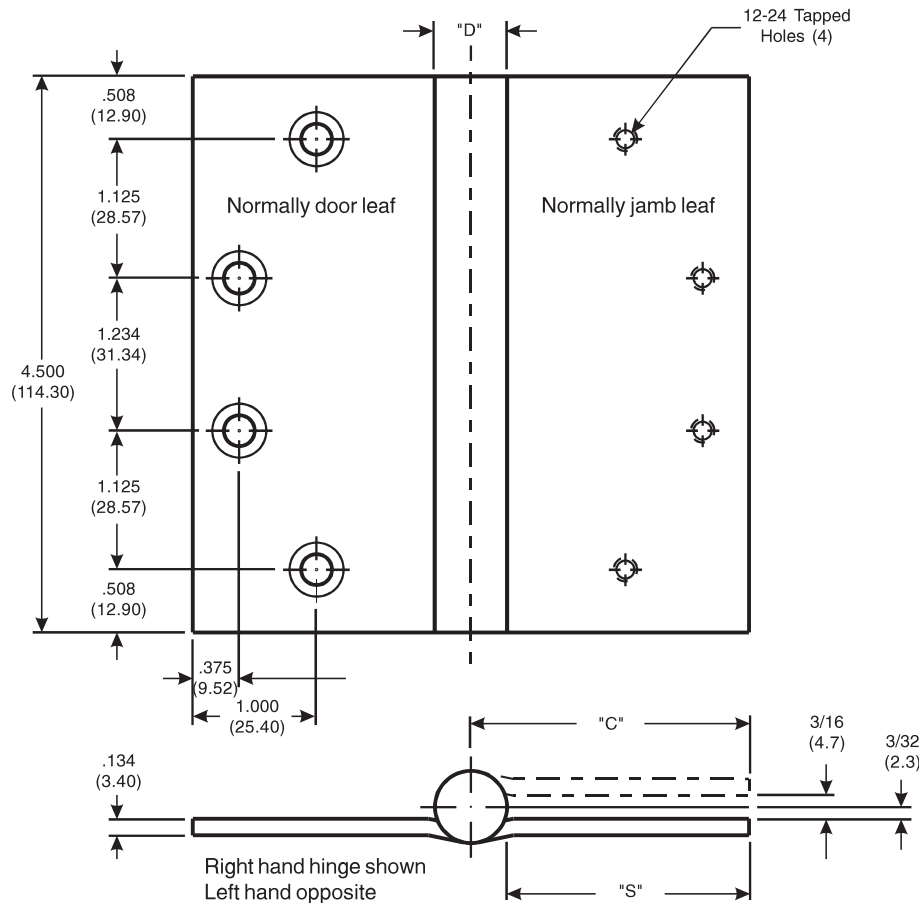


# Architectural Door Accessories

## McKinney 4 1/2 x 4, 4 1/2 x 4 1/2 Full Mortise Slip-In Type I Template Hinges

The global leader in  
door opening solutions

DO NOT SCALE  
DIMENSIONS: INCHES (MM)



CATALOG NUMBER		"D" OUTSIDE DIAMETER	"C" TO CENTER LINE		"S" DISTANCE (SWAGE LINE)	
STEEL HINGES	*NON-FERROUS OR STAINLESS STEEL HINGES		HINGE WIDTH		HINGE WIDTH	
			4 (101.6)	4 1/2 (114.3)	4 (101.6)	4 1/2 (114.3)
TA/TB 2714	TA/TB 2314	.603 (15.32)	1-63/64 (50.4)	2-15/64 (56.7)	1/21/32 (42.1)	1-29/32 (48.4)

## Template 055-15

**Effective date:**  
September 1, 2015

**Supersedes:** All Previous

McKINNEY Template  
Slip-In Type I Hinges of the  
Catalog Numbers are made  
to conform to ANSI/BHMA  
156.7.

**Machine Screw Size:**  
1/2 x 12-24 F.H.

**Wood Screw Size:**  
1 1/4 x 12 F.H.

Hinges are handed.

\*Check Catalog for Metals.

225 Episcopal Road  
Berlin CT 060377  
P: 800.346.7707 | F: 800.541.1073  
www.mckinneyhinge.com | dss-orders@assaabloy.com

McKinney is a brand associated with Corbin Russwin, Inc., an ASSA ABLOY Group company. Copyright © 2017, Corbin Russwin, Inc. All rights reserved. Reproduction in whole or in part without the express written permission of Corbin Russwin, Inc. is prohibited.