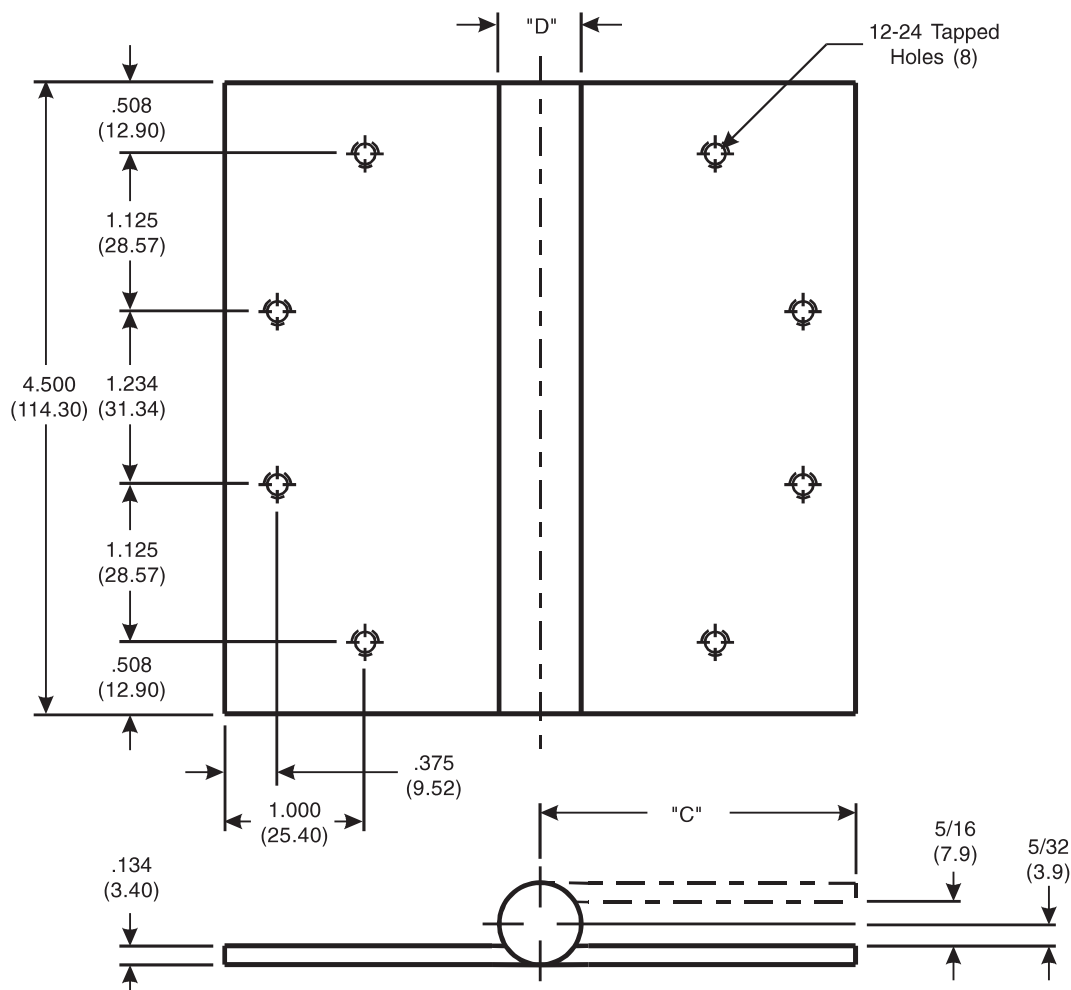


Architectural Door Accessories

McKinney 4¹/₂ x 4, 4¹/₂ x 4¹/₂ Full Mortise Slip-In Type II Template Hinges

The global leader in
door opening solutions

DO NOT SCALE
DIMENSIONS: INCHES (MM)



CATALOG NUMBER		"D" OUTSIDE DIAMETER	"C" TO CENTER LINE	
STEEL HINGES	*NON-FERROUS OR STAINLESS STEEL HINGES		HINGE WIDTH	
			4 (101.6)	4 ¹ / ₂ (114.3)
TA/TB 2714	TA/TB 2314	.603 (15.32)	1-59/64 (48.6)	2-11/64 (55.2)

Template 065-15

Effective date:
September 1, 2015

Supersedes: All Previous

McKINNEY Template Slip-in Type II Hinges of the Catalog Numbers are made to conform to ANSI/BHMA 156.7.

Machine Screw Size:
1/2 x 12-24 F.H.

*Check Catalog for Metals.

225 Episcopal Road
Berlin CT 060377
P: 800.346.7707 | F: 800.541.1073
www.mckinneyhinge.com | dss-orders@assaabloy.com

McKinney is a brand associated with Corbin Russwin, Inc., an ASSA ABLOY Group company. Copyright © 2017, Corbin Russwin, Inc. All rights reserved. Reproduction in whole or in part without the express written permission of Corbin Russwin, Inc. is prohibited.