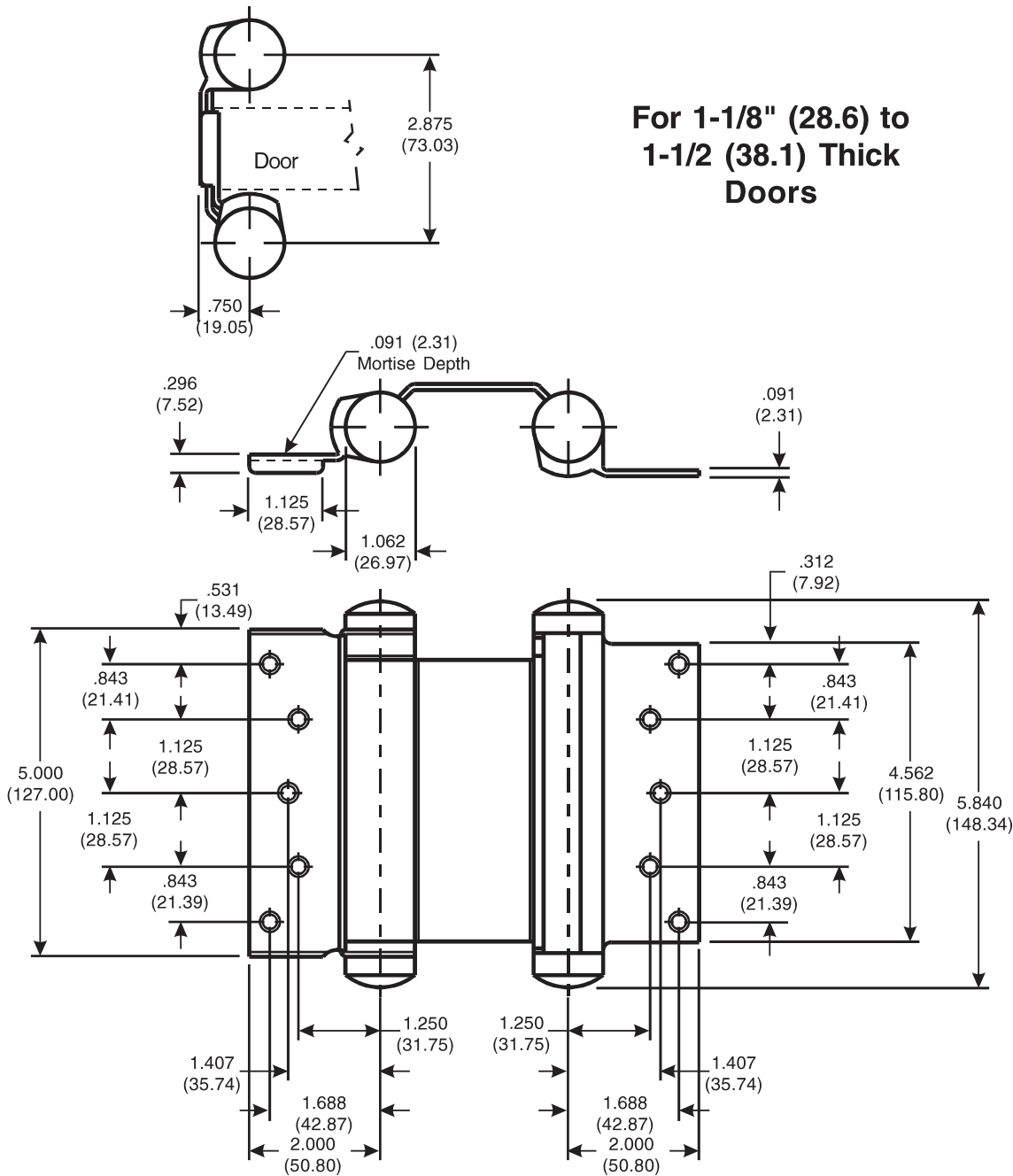


# Architectural Door Accessories

## McKinney 5" - 1001 Template Full Mortise Double Acting Spring Hinge

The global leader in  
door opening solutions

DO NOT SCALE  
DIMENSIONS: INCHES (MM)



## Template 355-98

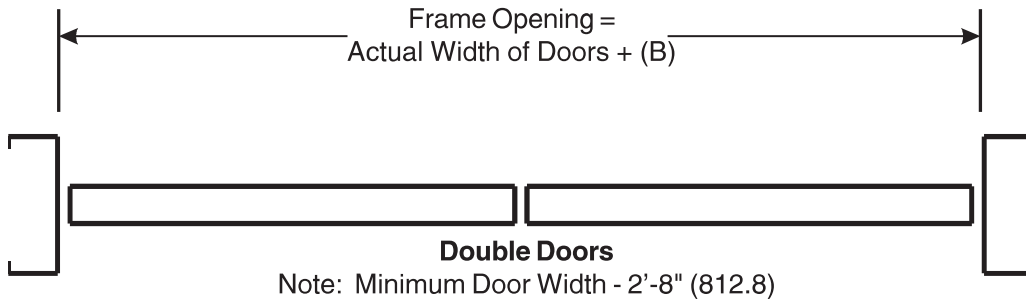
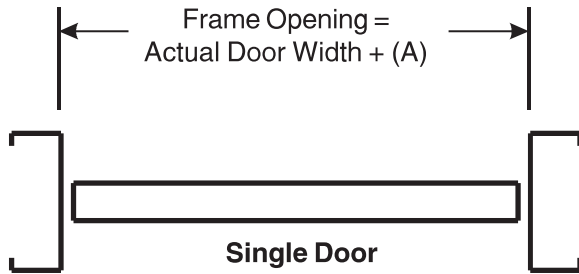
**Effective date:**  
March 30, 1998

**Supersedes:** All Previous

McKINNEY Template Full Mortise Double Acting Spring Hinge is made to conform to this drawing.

Wood Screw Size:  
1 x 10 F.H.

DO NOT SCALE  
DIMENSIONS: INCHES (MM)



Frame Clearances		
Hinge Mounting	Clearance (A)	Clearance (B)
Surface Applied	.484 (12.29)	.968 (24.59)
Door Flange Mortised	.393 (9.98)	.786 (19.96)

## Template 355-98

**Effective date:**  
March 30, 1998

**Supersedes:** All Previous

**Notes:**

1. This hinge is not to be used on doors with hinge edge beveled.
2. Refer to catalog for door weight and hinge size.
3. Hinges should be inverted on one door of a pair for proper centering.