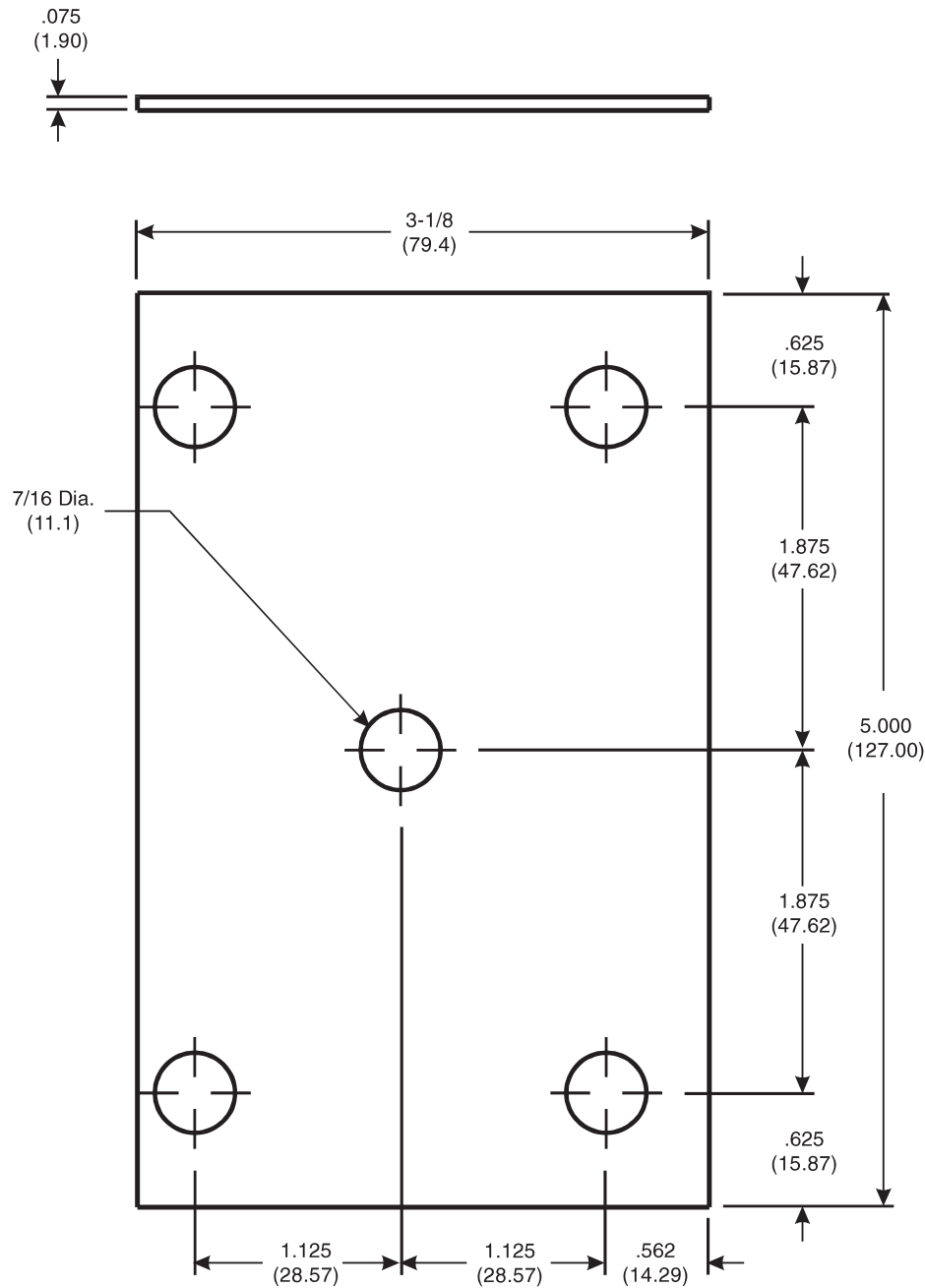


McKinney BP11 Backing Plate

The global leader in
door opening solutions

DO NOT SCALE
DIMENSIONS: INCHES (MM)



Template 191-98

Effective date:
March 30, 1998

Supersedes: All Previous

McKINNEY Template
Backing Plate is made to
conform to this drawing.

Machine Screw Size:
1/4-20 O.H. with Grommet
Nut (Provided with hinge.)

225 Episcopal Road
Berlin CT 060377
P: 800.346.7707 | F: 800.541.1073
www.mckinneyhinge.com | dss-orders@assaabloy.com

McKinney is a brand associated with Corbin Russwin, Inc., an ASSA ABLOY Group company. Copyright © 2017, Corbin Russwin, Inc. All rights reserved. Reproduction in whole or in part without the express written permission of Corbin Russwin, Inc. is prohibited.