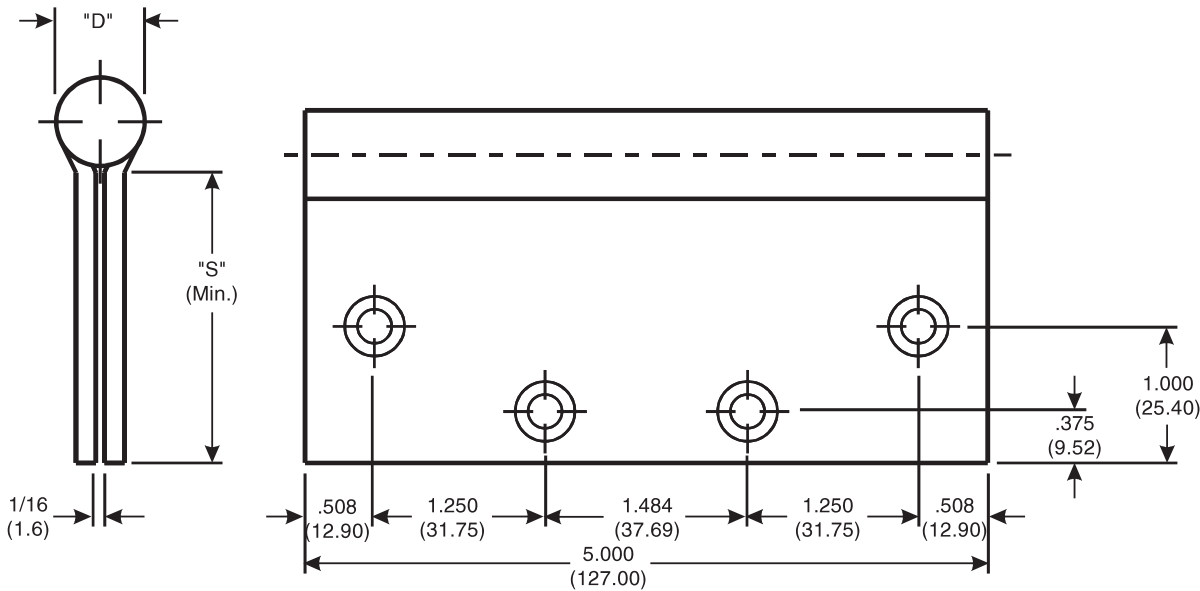


Architectural Door Accessories

McKinney 5 x 4½ Full Mortise Template Hinge

The global leader in door opening solutions

DO NOT SCALE
DIMENSIONS: INCHES (MM)



CATALOG NUMBER		GAUGE OF METAL	"D" OUTSIDE DIAMETER	"S" DISTANCE (SWAGE LINE)
STEEL HINGES	*NON-FERROUS OR STAINLESS STEEL HINGES			HINGE WIDTH
				4½ (114.3)
MPB68	MPB99	.190 (4.83)	.752 (19.10)	1-53/64 (46.4)

Template MP 035-16

Effective date:
October 28, 2016

Supersedes: All Previous

McKINNEY MacPro Template Hinges of the Catalog Numbers are made to conform to ANSI/BHMA 156.7.

Machine Screw Size:
½ x 12-24 F.H.

Wood Screw Size:
1¼ x 12 F.H.

225 Episcopal Road
Berlin CT 060377
P: 800.346.7707 | F: 800.541.1073
www.mckinneyhinge.com | dss-orders@assaabloy.com

McKinney is a brand associated with Corbin Russwin, Inc., an ASSA ABLOY Group company. Copyright © 2017, Corbin Russwin, Inc. All rights reserved. Reproduction in whole or in part without the express written permission of Corbin Russwin, Inc. is prohibited.