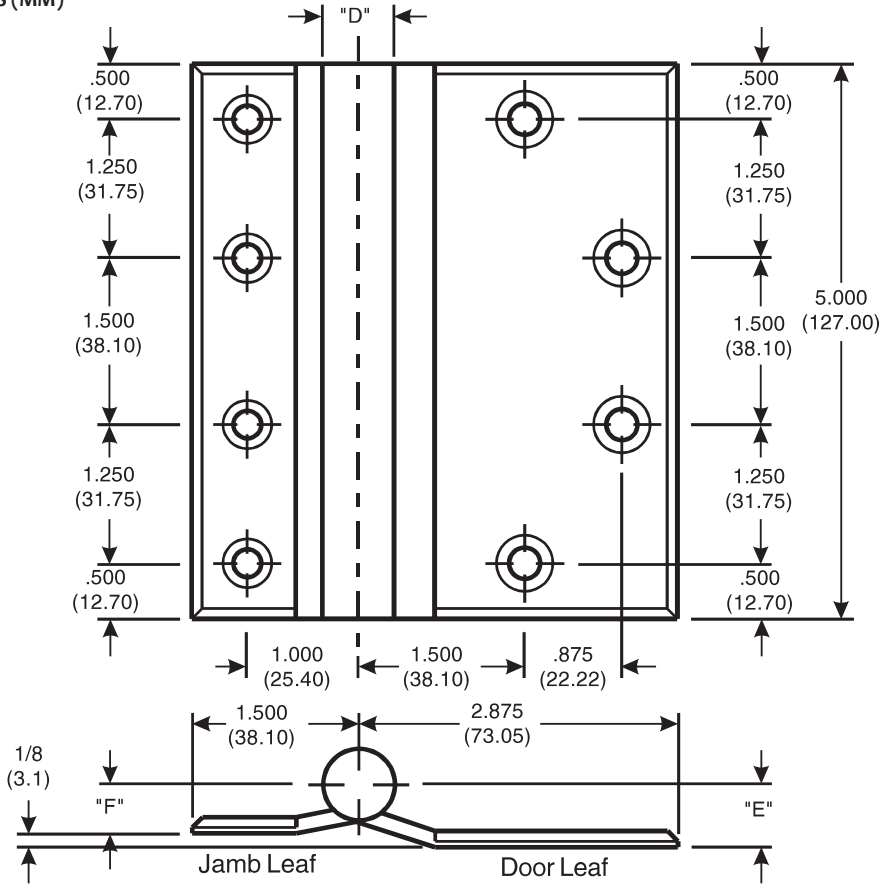


# Architectural Door Accessories

## McKinney 5" Full Surface Template Hinges

The global leader in door opening solutions

DO NOT SCALE  
DIMENSIONS: INCHES (MM)



### Template 135-15

**Effective date:**  
September 2, 2015

**Supersedes:** All Previous

McKINNEY Template Full Surface Hinges of the Catalog Numbers are made to conform to ANSI/BHMA 156.7.

Hospital Type Template Hinges conform to screw hole locations shown.

Machine Screw Size:  
Jamb Leaf: 1/2 x 12-24 F.H.  
Door Leaf: 2 x 1/4-20 O.H.  
with Grommet Nut  
(Specify door thickness if greater than 1 3/4)

Hinges are reversible.

\*Check Catalog for Metals.

CATALOG NUMBER		GAUGE OF METAL	"D" OUTSIDE DIAMETER	"E" DOOR LEAF OFFSET	"F" JAMB LEAF OFFSET
STEEL HINGES	*NON-FERROUS OR STAINLESS STEEL HINGES				
TA 771	TA 371	.146 (3.71)	.648 (16.46)	9/16 (14.3)	7/16 (11.1)
TA 781	TA 381	.190 (4.83)	.752 (19.10)	5/8 (15.9)	1/2 (12.7)
TA/TB 2771	-	.146 (3.71)	.648 (16.46)	9/16 (14.3)	7/16 (11.1)
T4A/T4B 3781	T4A/T4B 3381	.190 (4.83)	.752 (19.10)	5/8 (15.9)	1/2 (12.7)

225 Episcopal Road  
Berlin CT 060377  
P: 800.346.7707 | F: 800.541.1073  
www.mckinneyhinge.com | dss-orders@assaabloy.com

McKinney is a brand associated with Corbin Russwin, Inc., an ASSA ABLOY Group company. Copyright © 2017, Corbin Russwin, Inc. All rights reserved. Reproduction in whole or in part without the express written permission of Corbin Russwin, Inc. is prohibited.