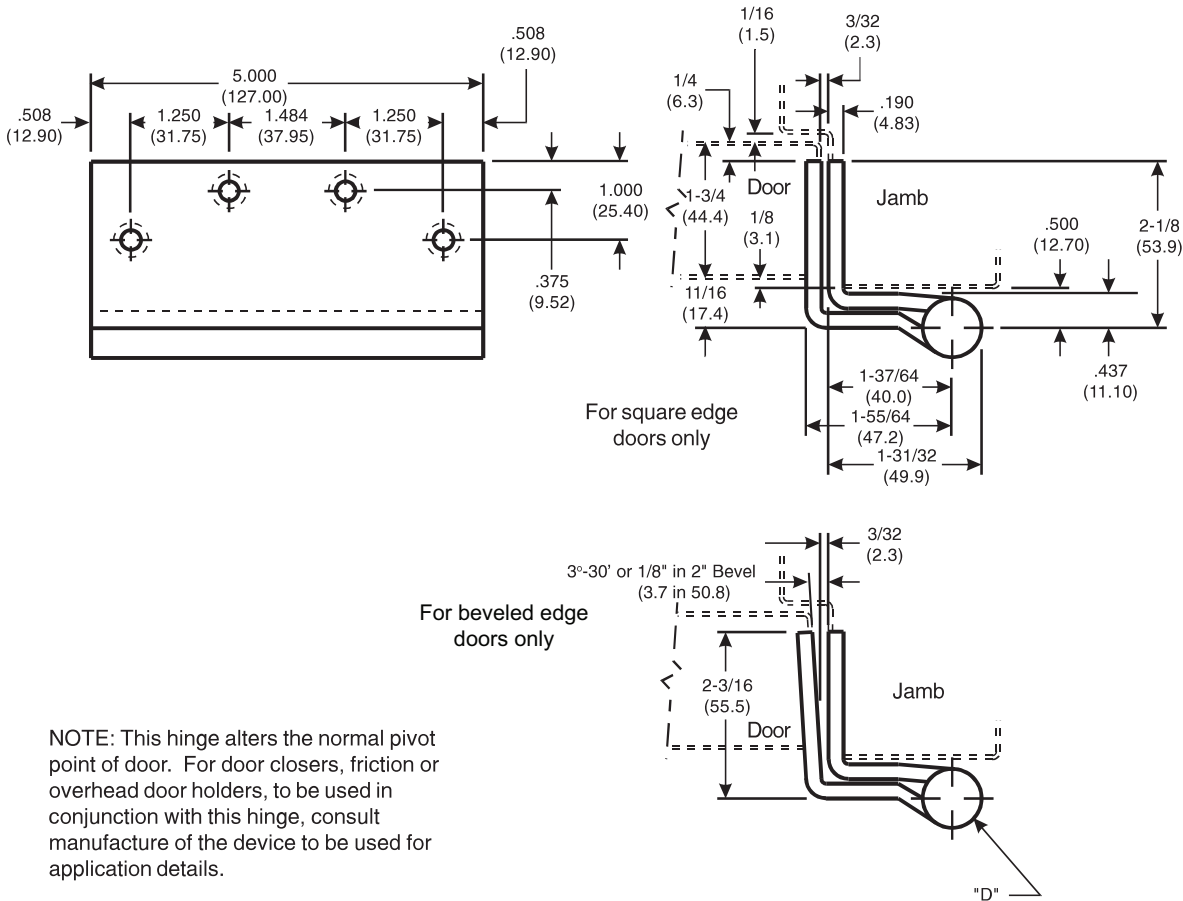


# Architectural Door Accessories

## McKinney 5" Full Mortise "Swing Clear" Template Hinges

The global leader in  
door opening solutions

DO NOT SCALE  
DIMENSIONS: INCHES (MM)



NOTE: This hinge alters the normal pivot point of door. For door closers, friction or overhead door holders, to be used in conjunction with this hinge, consult manufacture of the device to be used for application details.

### Template 100-15

**Effective date:**  
September 1, 2015

**Supersedes:** All Previous

McKINNEY Template Swing Clear Hinges are made in size, gauge and with screw holes located to conform to this drawing.

Hospital Type Template Hinges conform to screw hole locations shown.

Machine Screw Size:  
1/2 x 12-24 F.H.

Wood Screw Size:  
1 1/4 x 12 F.H.

Hinges are reversible.

\*Check Catalog for Metals.

CATALOG NUMBER				
STEEL HINGES		*NON-FERROUS OR STAINLESS STEEL HINGES		"D" OUTSIDE DIAMETER
SQUARE EDGE	BEVELED EDGE	SQUARE EDGE	BEVELED EDGE	
(1) TA 795	(1) TA 5795	-	-	.752 (19.10)
(1) T4A/T4B 3795	(1) T4A/T4B 4795	(1) T4A/T4B 3395	(1) T4A/T4B 4395	.752 (19.10)

225 Episcopal Road  
Berlin CT 060377  
P: 800.346.7707 | F: 800.541.1073  
www.mckinneyhinge.com | dss-orders@assaabloy.com

McKinney is a brand associated with Corbin Russwin, Inc., an ASSA ABLOY Group company. Copyright © 2017, Corbin Russwin, Inc. All rights reserved. Reproduction in whole or in part without the express written permission of Corbin Russwin, Inc. is prohibited.