

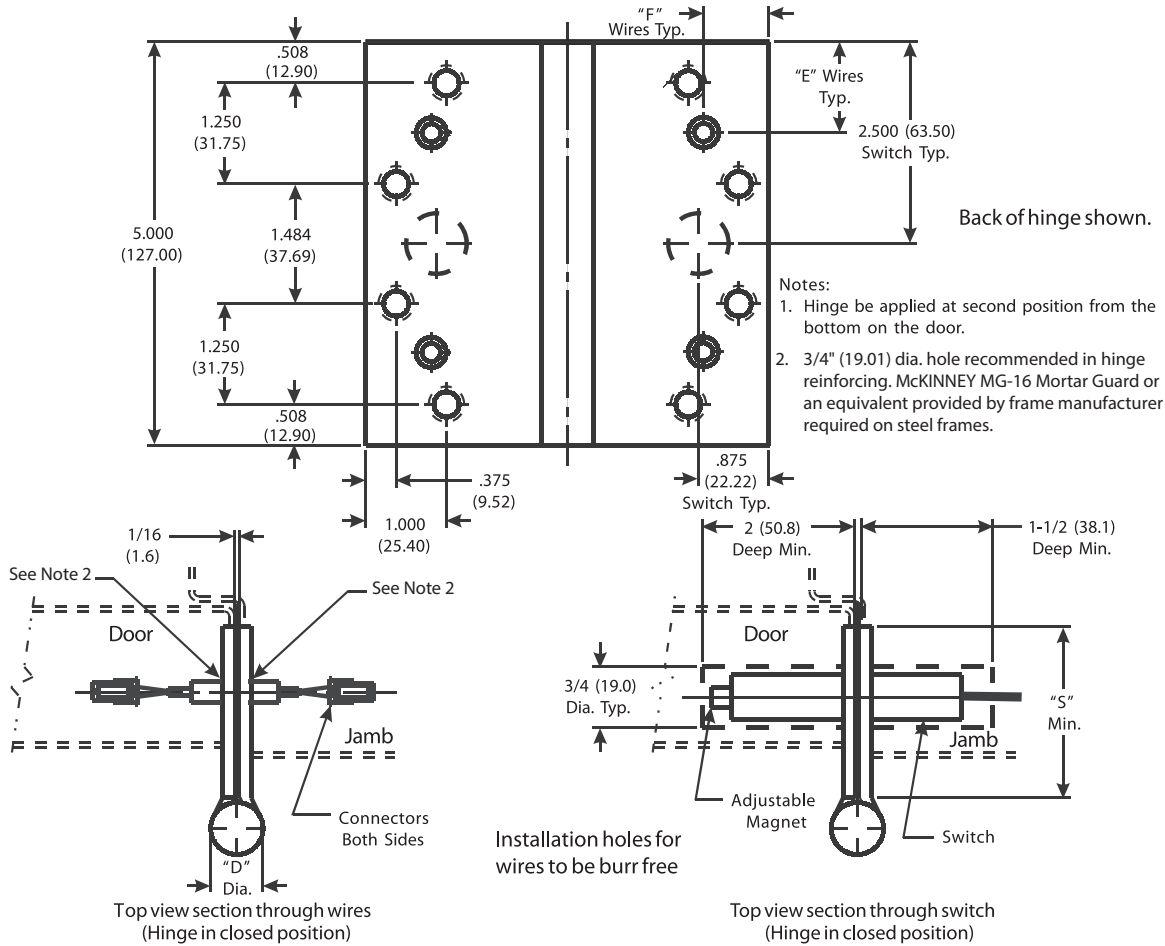
Architectural Door Accessories

McKinney 5 x 4 1/2, 5 x 5 Template Full Mortise, QC* Hinge x MM Hinge (10 to 12 Wires)

The global leader in
door opening solutions

Not recommended for use on wood or solid core doors.

DO NOT SCALE
DIMENSIONS: INCHES (MM)



Template 262-15

Effective date:
November 11, 2015

Supersedes: All Previous

McKINNEY Template Hinges of the Catalog Numbers are made to conform to ANSI/BHMA 156.7 for Screw Hole Location and Gauge of Metal. Switch size, wire location and hole size conforms to this drawing.

Machine Screw Size:
1/2 x 12-24 F.H.

Wood Screw Size:
1 1/4 x 12 F.H.

*Connector system utilizes wire colors & locations compatible with doors & hardware from other ASSA ABLOY Group Companies.

**Check Catalog for Metals.

| CATALOG NUMBER | | GAUGE OF METAL | "D" OUTSIDE DIA. | "E" WIRE LOCATION | "F" WIRE LOCATION | "S" (SWAGE LINE) | |
|--------------------|----------------------|----------------|------------------|-------------------|-------------------|------------------|---------------|
| STEEL HINGES | **NON-FERROUS HINGES | | | | | HINGE WIDTH | |
| | | | | | | 4 1/2 (114.3) | 5 (127.0) |
| TA 714xQCxMM | TA 314xQCxMM | .146 (3.71) | .648 (16.46) | 1.125 (28.57) | .812 (20.64) | 1-7/8 (47.6) | 2-1/8 (53.9) |
| TA 786xQCxMM | TA 386xQCxMM | .190 (4.83) | .752 (19.10) | 1.125 (28.57) | .812 (20.64) | 1-53/64 (46.4) | 2-5/64 (52.8) |
| TA/TB 2714xQCxMM | TA/TB 2314xQCxMM | .146 (3.71) | .648 (16.46) | 1.125 (28.57) | .812 (20.64) | 1-7/8 (47.6) | 2-1/8 (53.9) |
| T4A/T4B 3786xQCxMM | T4A/T4B 3386xQCxMM | .190 (4.83) | .752 (19.10) | 1.062 (26.96) | .750 (19.05) | 1-53/64 (46.4) | 2-5/64 (52.8) |

225 Episcopal Road
Berlin CT 060377
P: 800.346.7707 | F: 800.541.1073
www.mckinneyhinge.com | dss-orders@assaabloy.com

McKinney is a brand associated with Corbin Russwin, Inc., an ASSA ABLOY Group company. Copyright © 2017, Corbin Russwin, Inc. All rights reserved. Reproduction in whole or in part without the express written permission of Corbin Russwin, Inc. is prohibited.