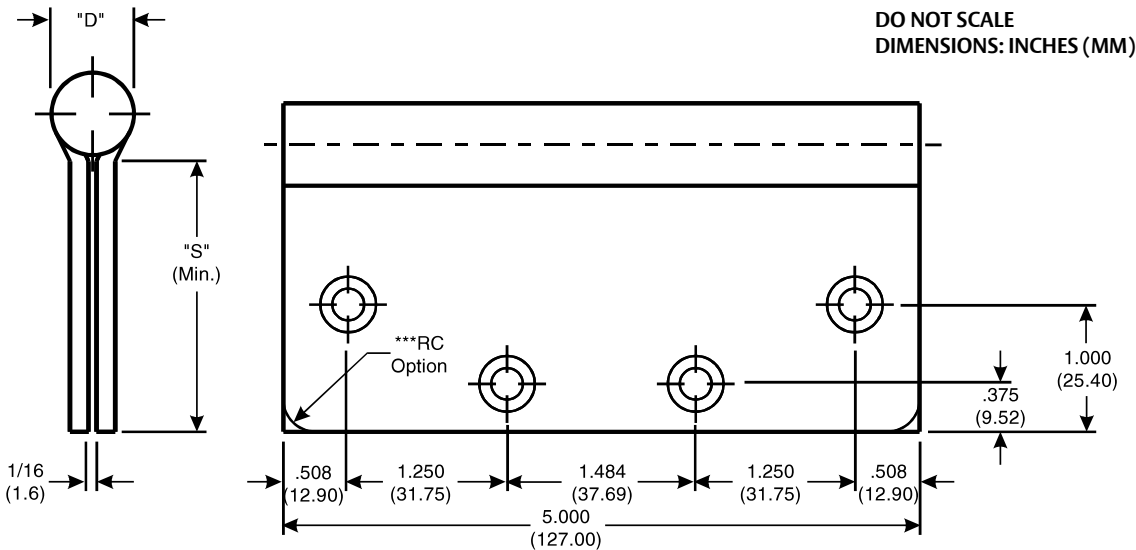


Architectural Door Accessories

ASSA ABLOY

McKinney 5 x 4, 5 x 4¹/₂, 5 x 5, 5 x 6, 5 x 7, 5 x 8 Full Mortise Template Hinges

The global leader in
door opening solutions



CATALOG NUMBER		GAUGE OF METAL	"D" OUTSIDE DIAMETER	"S" DISTANCE (SWAGE LINE)					
STEEL HINGES	*NON-FERROUS OR STAINLESS STEEL HINGES			HINGE WIDTH					
				4 (101.6)	4½ (114.3)	5 (127.0)	6 (152.4)	7 (177.8)	8 (203.2)
TA 714	TA 314	.146 (3.71)	.648 (16.46)	**	1-7/8 (47.6)	2-1/8 (53.9)	-	-	-
TA 786	TA 386	.190 (4.83)	.752 (19.10)	**	1-53/64 (46.4)	2-5/64 (52.8)	-	-	-
T 2714	T 2314	.146 (3.71)	.648 (16.46)	**	1-7/8 (47.6)	2-1/8 (53.9)	-	-	-
TCA 2714	TCA 2314	.146 (3.71)	.648 (16.46)	**	1-7/8 (47.6)	2-1/8 (53.9)	-	-	-
TA/TB 2714	TA/TB 2314	.146 (3.71)	.648 (16.46)	1-5/8 (41.3)	1-7/8 (47.6)	2-1/8 (53.9)	-	-	-
TA 2731	TA 3331	.146 (3.71)	.525 (13.33)	1-21/32 (42.1)	1-29/32 (48.4)	2-5/32 (54.8)			
TA/TB 2798	TA/TB 2398	.146 (3.71)	.648 (16.46)	-	-	-	2-5/8 (66.7)	3-1/8 (79.4)	3-5/8 (92.1)
TA 3750	TA 3350	.190 (4.83)	.701 (17.80)	**	1-13/16 (46.0)	2-1/16 (52.4)	-	-	-
TCA 3786	TCA 3386	.190 (4.83)	.752 (19.10)	**	1-53/64 (46.4)	2-5/64 (52.8)	2-37/64 (65.5)	3-5/64 (78.2)	3-37/64 (90.9)
T4A/T4B 3786	T4A/T4B 3386	.190 (4.83)	.752 (19.10)	1-37/64 (40.1)	1-53/64 (46.4)	2-5/64 (52.8)	2-37/64 (65.5)	3-5/64 (78.2)	3-37/64 (90.9)
SP3786	SP3386	.190 (4.83)	.752 (19.10)	-	1-53/64 (46.4)	2-5/64 (52.8)	2-37/64 (65.5)	3-5/64 (78.2)	3-37/64 (90.9)

Template 035-18

Effective date:
July 13, 2018

Supersedes: All Previous

McKINNEY Template Hinges of the Catalog Numbers are made to conform to ANSI/BHMA 156.7.

Hospital Type Template Hinges conform to screw hole locations shown.

Machine Screw Size:
1/2 x 12-24 F.H.

Wood Screw Size:
1 1/4 x 12 F.H.

*Check Catalog for Metals.

**Dimensions will be supplied upon request.

***Round Corner Option is available with 1/4 (6.3) or 5/8 (15.9) radii. If none is specified 1/4 (6.3) will be supplied.

ASSA ABLOY
225 Episcopal Road
Berlin CT 06037
P: (800) 346-7707 • F: (800) 541-1073
www.assaabloydooraccessories.us

Copyright © 2018, ASSA ABLOY Accessories and Door Controls Group, Inc. All rights reserved. Reproduction in whole or in part without the express written permission of ASSA ABLOY Accessories and Door Controls Group, Inc. is prohibited.