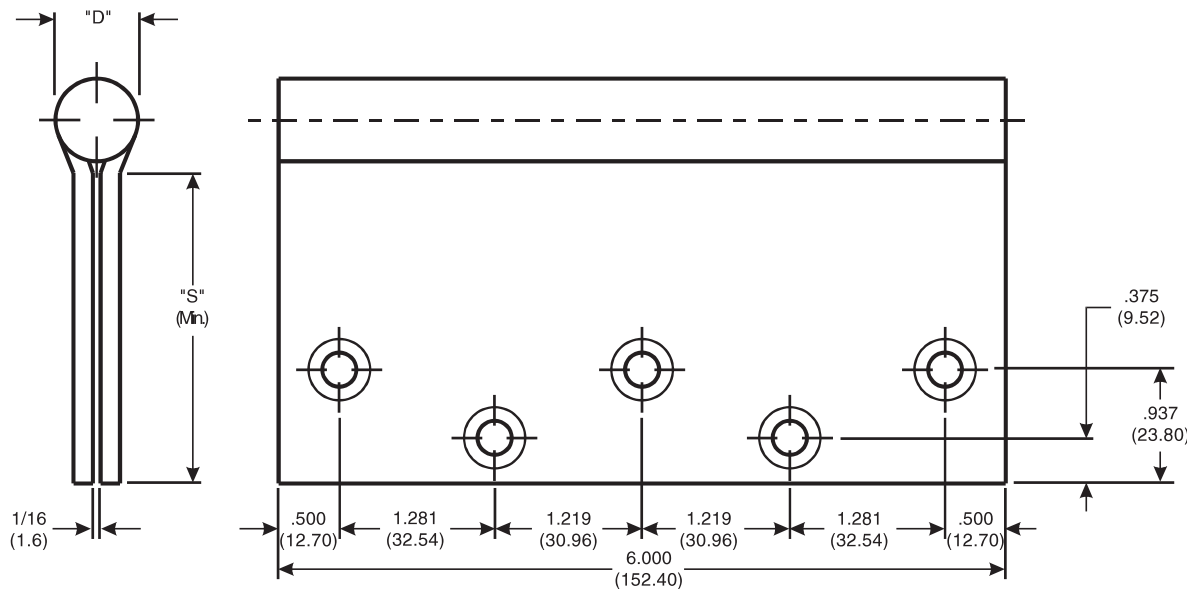


Architectural Door Accessories

McKinney 6 x 5, 6 x 6 Full Mortise Template Hinges

The global leader in
door opening solutions

DO NOT SCALE
DIMENSIONS: INCHES (MM)



Template 040-15

Effective date:
September 1, 2015

Supersedes: All Previous

McKINNEY Template Hinges of the Catalog Numbers are made to conform to ANSI/BHMA 156.7.

Hospital Type Template Hinges conform to screw hole locations shown.

Machine Screw Size:
1/2 x 1/4-20 F.H.

Wood Screw Size:
1 1/2 x 14 F.H.

*Check Catalog for Metals.

CATALOG NUMBER		GAUGE OF METAL	"D" OUTSIDE DIAMETER	"S" DISTANCE (SWAGE LINE)	
STEEL HINGES	*NON-FERROUS OR STAINLESS STEEL HINGES			HINGE WIDTH	
				5 (127.0)	6 (152.4)
TA 786	TA 386	.203 (5.16)	.818 (20.78)	1-7/8 (47.6)	2-3/8 (60.3)
TA/TB 2714	TA/TB 2314	.160 (4.06)	.681 (17.30)	-	2-9/16 (65.1)
T4A/T4B 3786	T4A/T4B 3386	.203 (5.16)	.818 (20.78)	1-7/8 (47.6)	2-3/8 (60.3)

225 Episcopal Road
Berlin CT 060377
P: 800.346.7707 | F: 800.541.1073
www.mckinneyhinge.com | dss-orders@assaabloy.com

McKinney is a brand associated with Corbin Russwin, Inc., an ASSA ABLOY Group company. Copyright © 2017, Corbin Russwin, Inc. All rights reserved. Reproduction in whole or in part without the express written permission of Corbin Russwin, Inc. is prohibited.