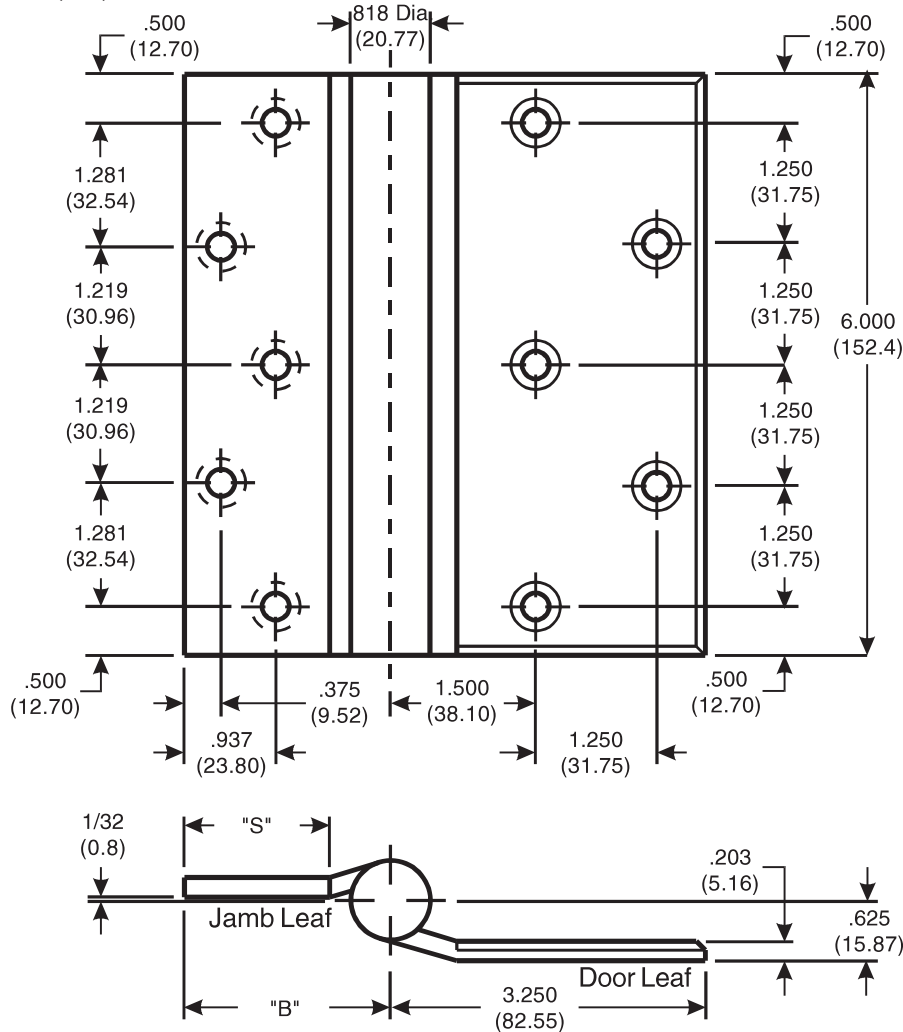


# Architectural Door Accessories

## McKinney 6" Half Surface Template Hinges

The global leader in  
door opening solutions

DO NOT SCALE  
DIMENSIONS: INCHES (MM)



## Template 185-15

**Effective date:**  
September 2, 2015

**Supersedes:** All Previous

McKinney Template Half Surface Hinges of the Catalog Numbers are made to conform to ANSI/BHMA 156.7.

Hospital Type Template Hinges conform to screw hole locations shown.

Machine Screw Size:  
Jamb Leaf: 1/2 x 1/4-20 F.H.  
Door Leaf: 2 x 1/4-20 O.H.  
with Grommet Nut  
(Specify door thickness if greater than 1 3/4.)

Hinges are reversible.

\*Check Catalog for Metals.

CATALOG NUMBER		DOOR THICKNESS	JAMB LEAF	
STEEL HINGES	*NON-FERROUS OR STAINLESS STEEL HINGES		"B" TO CENTER LINE	"S" SWAGE LINE
T4A/T4B 3782	T4A/T4B 3382	1-3/4 (44.4)	2.125 (53.97)	1-1/2 (38.1)
T4A/T4B 3782	T4A/T4B 3382	2-1/4 (57.1)	2.625 (66.67)	2 (50.8)

225 Episcopal Road  
Berlin CT 060377  
P: 800.346.7707 | F: 800.541.1073  
www.mckinneyhinge.com | dss-orders@assaabloy.com

McKinney is a brand associated with Corbin Russwin, Inc., an ASSA ABLOY Group company. Copyright © 2017, Corbin Russwin, Inc. All rights reserved. Reproduction in whole or in part without the express written permission of Corbin Russwin, Inc. is prohibited.