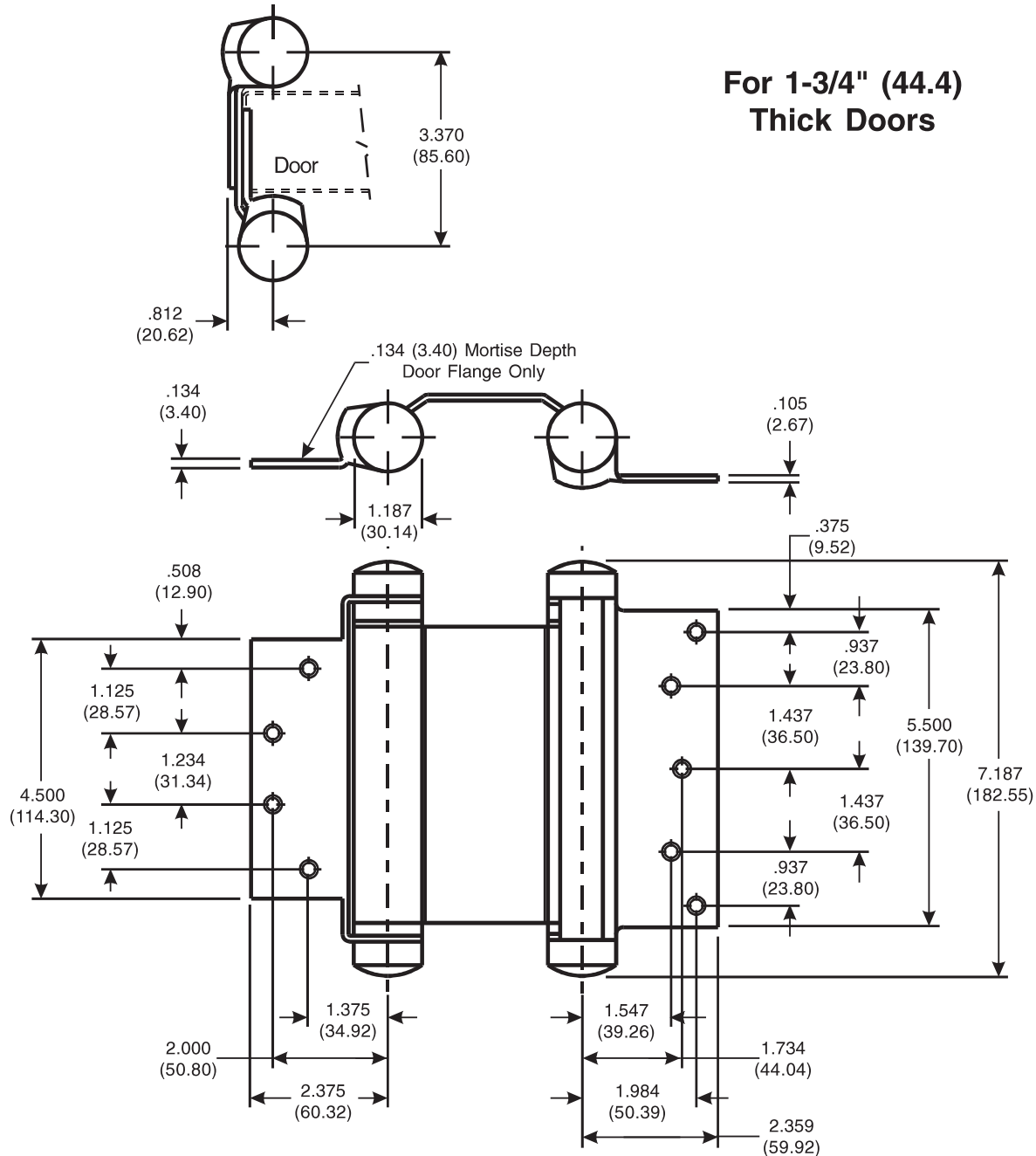


Architectural Door Accessories

McKinney 6 x 4 1/2" - 1001 Template Full Mortise Double Acting Spring Hinge

The global leader in
door opening solutions

DO NOT SCALE
DIMENSIONS: INCHES (MM)



Template 365-98

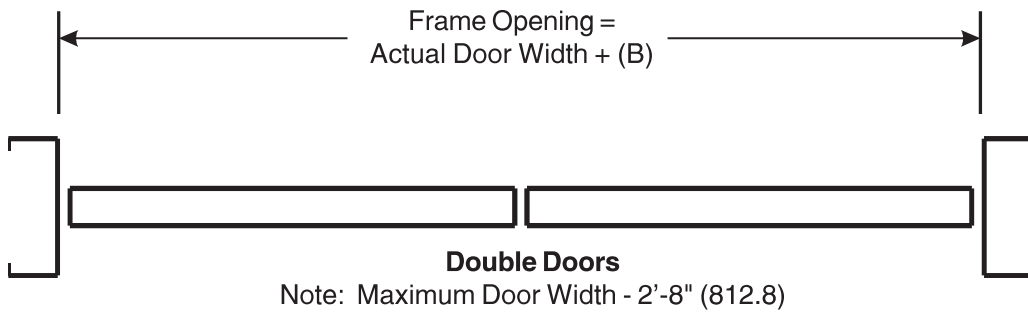
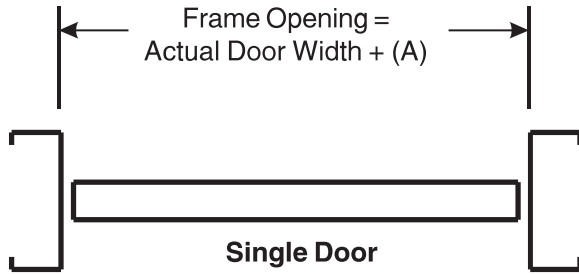
Effective date:
March 30, 1998

Supersedes: All Previous

McKINNEY Template Full Mortise Double Acting Spring Hinge is made to conform to this drawing.

Machine Screw Size:
1/2 x 12-24 F.H.

DO NOT SCALE
DIMENSIONS: INCHES (MM)



Frame Clearances		
Hinge Mounting	Clearance (A)	Clearance (B)
Surface Applied	---	---
Door Flange Mortised	.407 (10.34)	.814 (20.68)

Template 365-98

Effective date:
March 30, 1998

Supersedes: All Previous

Notes:

1. This hinge is not to be used on doors with hinge edge beveled.
2. Refer to catalog for door weight and hinge size.
3. Hinges should be inverted on one door of a pair for proper centering.