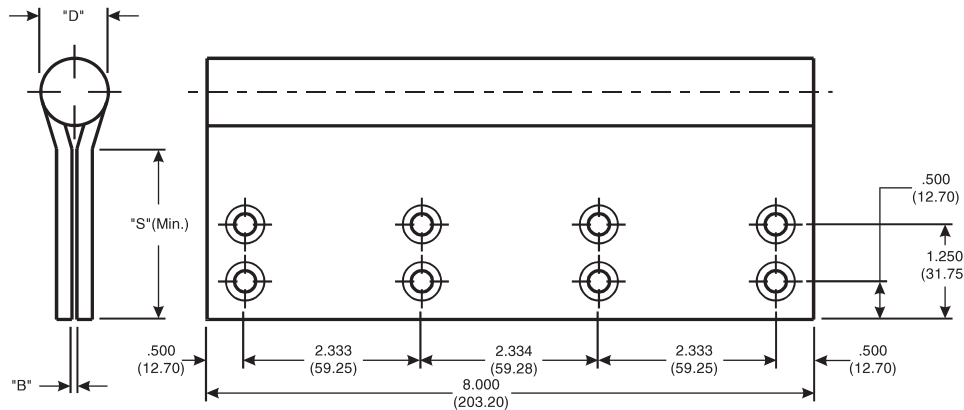


# Architectural Door Accessories

## McKinney 8 x 6 Full Mortise Template Hinges

The global leader in  
door opening solutions

DO NOT SCALE  
DIMENSIONS: INCHES (MM)



The above pattern is for 1-3/4" to 2-1/4" thick doors;  
For doors greater than 2-1/4" thick see template 046B

| CATALOG NUMBER |  | GAUGE OF METAL | "B" SWAGE  | "D" OUTSIDE DIAMETER | "S" DISTANCE (SWAGE LINE) |
|----------------|--|----------------|------------|----------------------|---------------------------|
| STEEL HINGES   | *NON-FERROUS OR STAINLESS STEEL HINGES |                |            |                      | HINGE WIDTH               |
| T6B 3786       | -                                      | .203 (5.16)    | 1/16 (1.6) | .991 (25.17)         | 6 (152.4)<br>2-1/4 (57.1) |

## Template 046A-15

**Effective date:**  
September 1, 2015

**Supersedes:** All Previous

McKINNEY Template Hinges of the Catalog Numbers are made to conform to ANSI/BHMA 156.7.

**Machine Screw Size:**  
1/2 x 1/4-20 F.H.

**Wood Screw Size:**  
1 1/2 x 14 F.H.

\*Check Catalog for Metals.

225 Episcopal Road  
Berlin CT 060377  
P: 800.346.7707 | F: 800.541.1073  
www.mckinneyhinge.com | dss-orders@assaabloy.com

McKinney is a brand associated with Corbin Russwin, Inc., an ASSA ABLOY Group company. Copyright © 2017, Corbin Russwin, Inc. All rights reserved. Reproduction in whole or in part without the express written permission of Corbin Russwin, Inc. is prohibited.