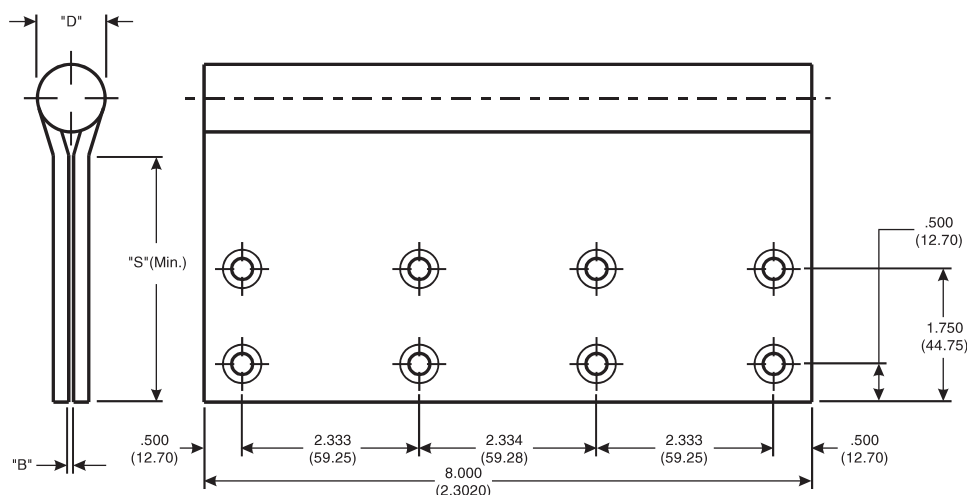


Architectural Door Accessories

McKinney 8 x 8 Full Mortise Template Hinges

The global leader in
door opening solutions

DO NOT SCALE
DIMENSIONS: INCHES (MM)



The above pattern is for 2-1/4" or more thick doors;
For doors less than 2-1/4" thick see template 046A

CATALOG NUMBER		GAUGE OF METAL	"B" SWAGE	"D" OUTSIDE DIAMETER	"S" DISTANCE (SWAGE LINE)
STEEL HINGES	*NON-FERROUS OR STAINLESS STEEL HINGES				HINGE WIDTH
-	T6B 3386	.203 (5.16)	1/16 (1.6)	.991 (25.17)	8 (202.2)
					3-1/4 (82.5)

Template 046B-15

Effective date:
September 1, 2015

Supersedes: All Previous

McKINNEY Template Hinges of the Catalog Numbers are made to conform to ANSI/BHMA 156.7.

Machine Screw Size:
1/2 x 1/4-20 F.H.

Wood Screw Size:
1 1/2 x 14 F.H.

*Check Catalog for Metals.

225 Episcopal Road
Berlin CT 060377
P: 800.346.7707 | F: 800.541.1073
www.mckinneyhinge.com | dss-orders@assaabloy.com

McKinney is a brand associated with Corbin Russwin, Inc., an ASSA ABLOY Group company. Copyright © 2017, Corbin Russwin, Inc. All rights reserved. Reproduction in whole or in part without the express written permission of Corbin Russwin, Inc. is prohibited.