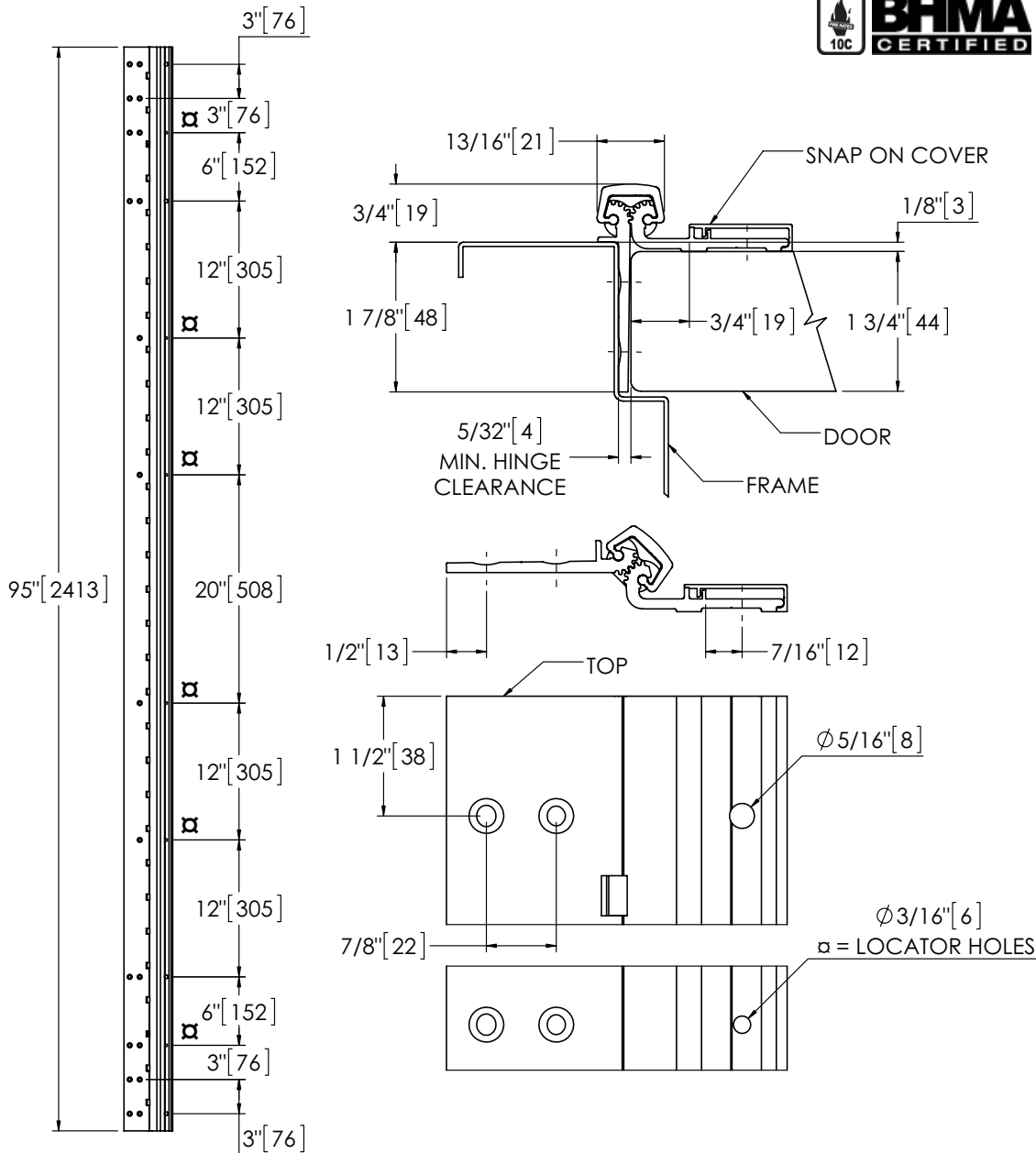


MCK-54HD 95" Half Surface HD

The global leader in
door opening solutions

DO NOT SCALE
FOR ILLUSTRATION PURPOSES ONLY
DIMENSIONS: INCHES (MM)



Template 638-18

Effective date: June 2018

Supersedes: All Previous

McKINNEY Template Half Surface Continuous Aluminum Geared Hinge MCK-54HD is made to conform to this drawing.

Machine Screw Size:
Jamb Leaf: 7/16 x 12-24 F.H., self-tapping
Door Leaf: 3/4 x 12 Pan Hd., self drilling
1/4-20 Shoulder Screws w/ Sex Nuts

Hinges are listed for fire applications up to 90 minutes without special preparation; for 3 hour openings using hollow metal doors and hollow metal frames on masonry/drywall, fire pins (supplied separately) must be used.

**** CAUTION ****
Due to Frame Installation Variations, Pre-drilling For Fasteners IS NOT Recommended